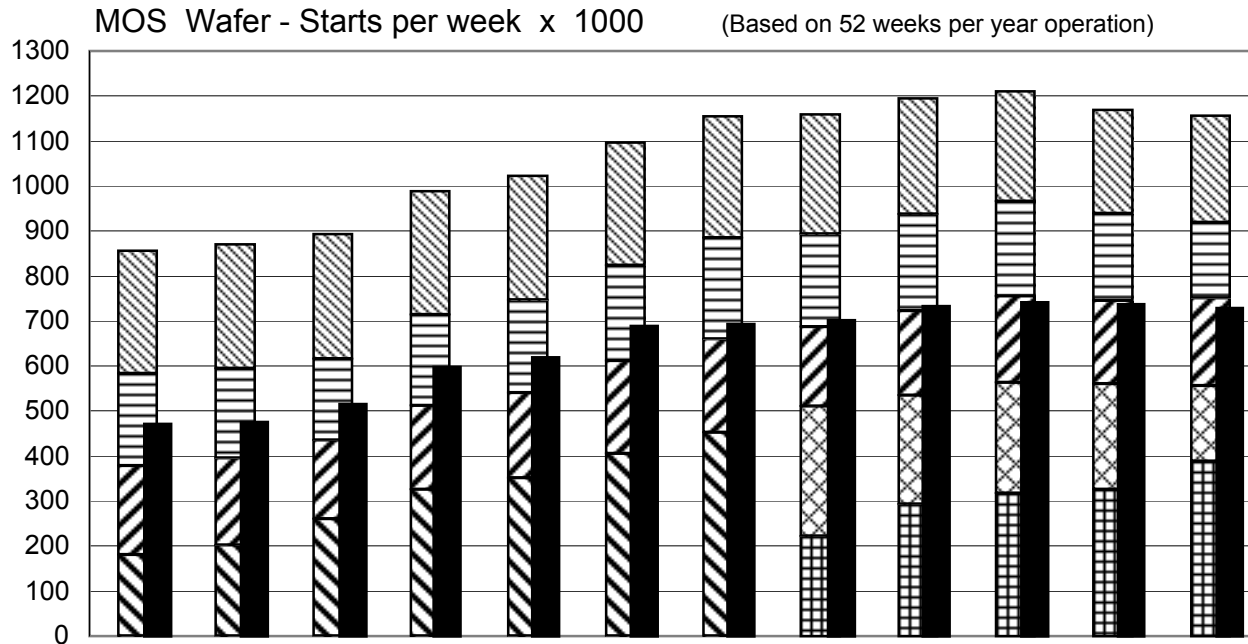


NOTES :

All data in the graph are expressed in 8 inch equivalent wafers.

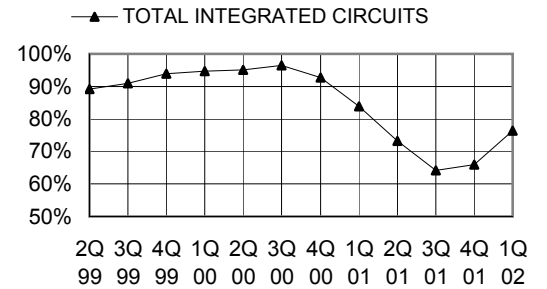
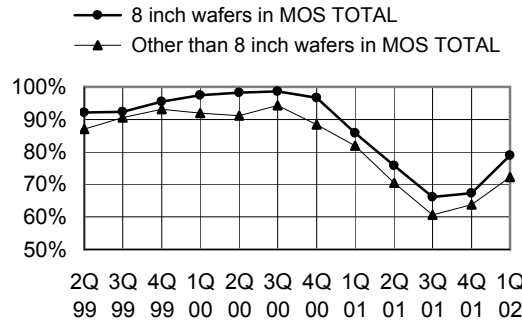
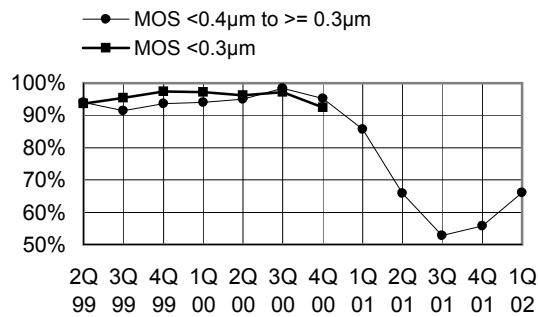
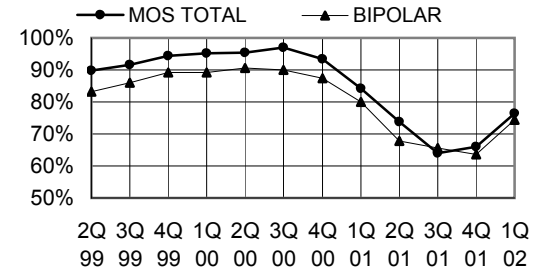
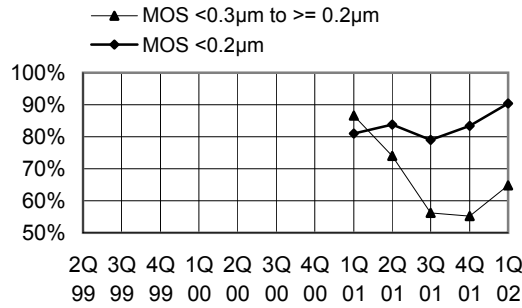
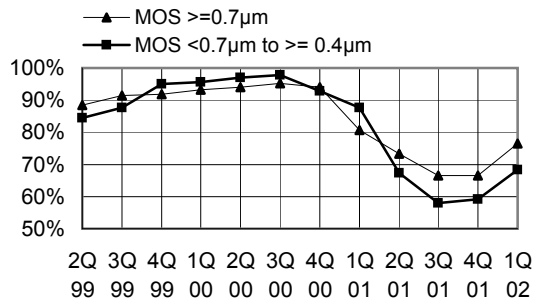
The line "Total IC's" in the table includes the "Bipolar" data, which were converted for this purpose from 5 inch to 8 inch equivalent wafers by using the factor 0.391.



IC WAFER - FAB CAPACITY
in wafer-starts per week x 1000

	1999			2000				2001				2002
	2Q	3Q	4Q	1Q	2Q	3Q	4Q	1Q	2Q	3Q	4Q	1Q
MOS ≥ 0.7µm	273.7	276.2	277.4	274.2	276.2	273.1	270.6	265.7	258.3	245.2	230.3	237.8
MOS < 0.7µm to ≥ 0.4µm	204.4	198.5	180.8	202.1	205.2	212.3	224.7	205.2	214.4	209.3	193.4	167.6
MOS < 0.4µm to ≥ 0.3µm	197.6	194.1	174	186	190.2	205.8	207.8	177	187.7	192.1	184.9	194.8
MOS < 0.3µm	181	201.7	260.6	325.8	350.8	405.8	452.3					
MOS < 0.3µm to ≥ 0.2µm								288.8	241.2	246.6	234.7	168
MOS < 0.2µm								221.8	293.5	317.2	325.8	388.6
MOS TOTAL	856.7	870.5	892.8	988.1	1022.4	1097	1155.4	1158.5	1195.1	1210.4	1169.1	1156.8
MOS Foundry wafers in MOS TOTAL												132.5
8 inch wafers in MOS TOTAL	476.3	480.9	518.3	600.3	622.2	693.7	699.4	705	734.8	745.9	739.9	732.4
BIPOLAR (5 inch equivalents)	305.5	299.8	303.1	308.1	313.6	320.4	325.6	298.9	303.9	291.6	281.5	289.9
TOTAL IC's (8 inch equivalents)	976.2	987.7	1011.3	1108.6	1145.0	1222.3	1282.7	1275.4	1313.9	1324.4	1279.2	1270.2

These statistics are based on data supplied by merchant IC manufacturers who together represent the great majority of the world's IC production.



IC CAPACITY UTILISATION in percent

	1999			2000				2001				2002
	2Q	3Q	4Q	1Q	2Q	3Q	4Q	1Q	2Q	3Q	4Q	1Q
MOS $\geq 0.7\mu\text{m}$	88.4	91.5	91.8	93.3	94	95.3	94	80.7	73.3	66.6	66.6	76.4
MOS $< 0.7\mu\text{m}$ to $\geq 0.4\mu\text{m}$	84.5	87.7	95.1	95.6	97	97.9	92.8	87.6	67.4	57.9	59.2	68.4
MOS $< 0.4\mu\text{m}$ to $\geq 0.3\mu\text{m}$	94.1	91.4	93.7	94	95	98.4	95.2	85.7	65.8	52.7	55.8	66
MOS $< 0.3\mu\text{m}$	93.6	95.5	97.5	97.3	96.2	97.2	92.4					
MOS $< 0.3\mu\text{m}$ to $\geq 0.2\mu\text{m}$								86.7	74	56.3	55.3	64.8
MOS $< 0.2\mu\text{m}$								81	83.7	79	83.5	90.4
MOS TOTAL	89.9	91.5	94.5	95.2	95.5	97.1	93.4	84.2	73.8	64	66.1	76.5
MOS Foundry wafers in MOS TOTAL (no graph)												62.4
8 inch wafers in MOS TOTAL	92.1	92.4	95.5	97.4	98.3	98.7	96.7	85.8	75.8	66.2	67.4	79
Other than 8 inch wafers in MOS TOTAL	87.1	90.5	93.1	91.9	91.2	94.2	88.4	81.8	70.5	60.6	63.7	72.2
BIPOLAR	83.2	86.1	89.2	89.3	90.7	90	87.4	80.1	67.7	65.6	63.7	74.5
TOTAL INTEGRATED CIRCUITS	89.1	90.9	93.9	94.6	95	96.4	92.8	83.9	73.2	64.2	65.9	76.3

These statistics are based on data supplied by merchant IC manufacturers who together represent the great majority of the world's IC production.