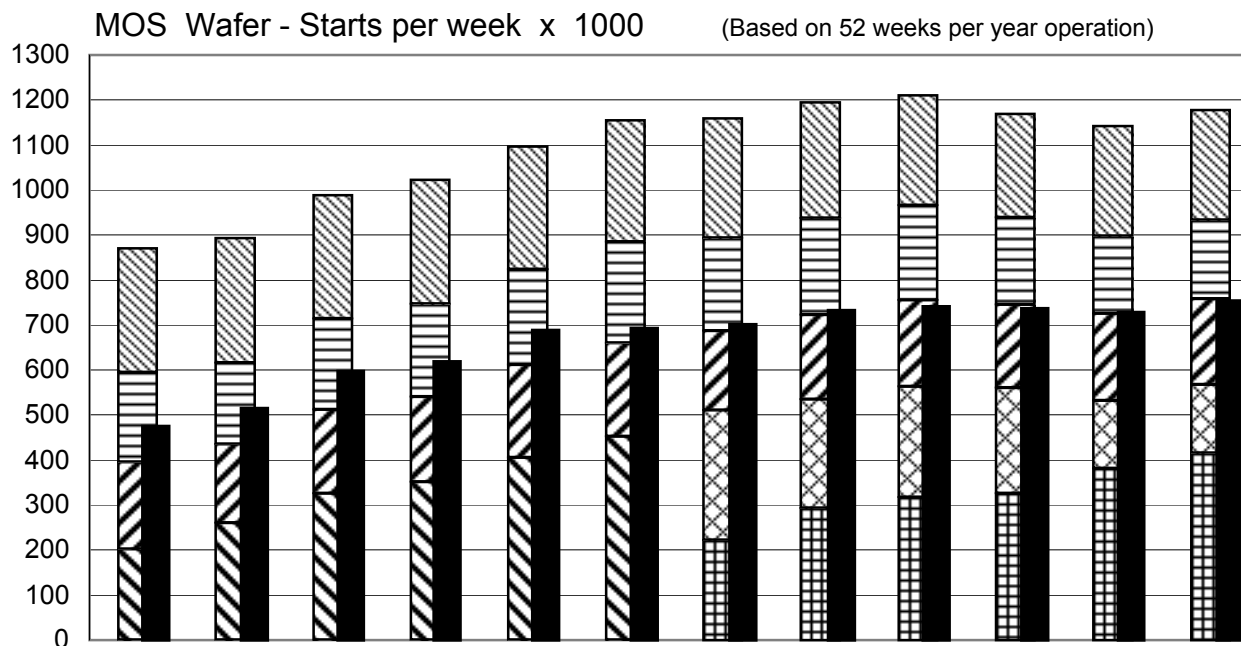


NOTES :

All data in the graph are expressed in 8 inch equivalent wafers.

The line "Total IC's" in the table includes the "Bipolar" data, which were converted for this purpose from 5 inch to 8 inch equivalent wafers by using the factor 0.391.

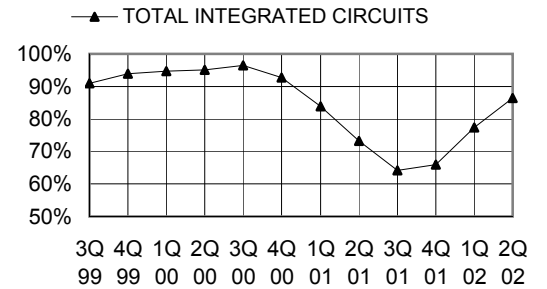
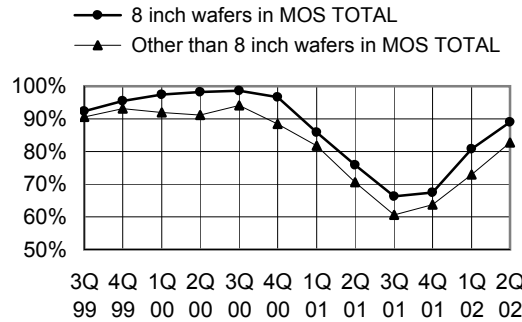
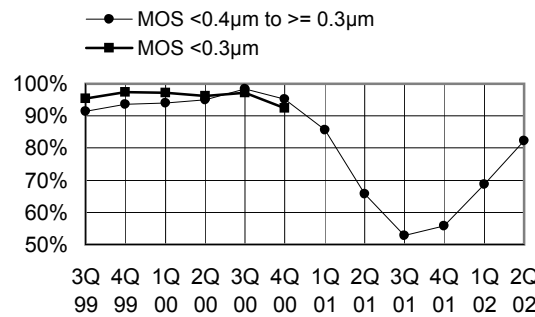
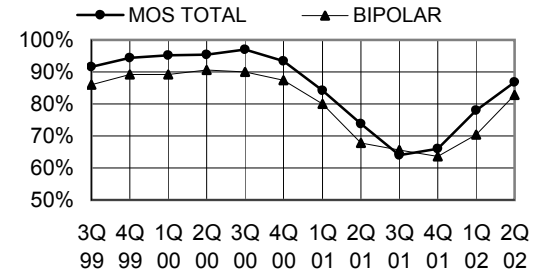
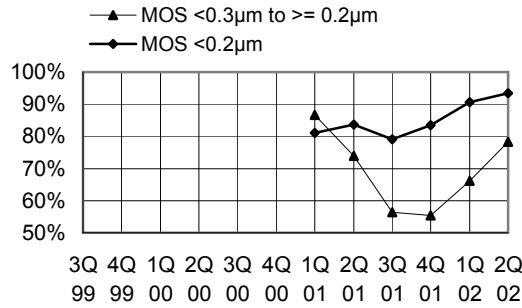
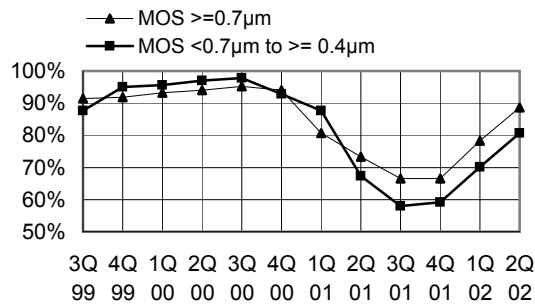


IC WAFER - FAB CAPACITY
in wafer-starts per week x 1000

	8 inch equivalents	1999		2000		2001				2002			
		3Q	4Q	1Q	2Q	3Q	4Q	1Q	2Q	3Q	4Q	1Q	2Q
MOS ≥ 0.7µm		276.2	277.4	274.2	276.2	273.1	270.6	265.7	258.3	245.2	230.3	245.4	245
MOS < 0.7µm to ≥ 0.4µm		198.5	180.8	202.1	205.2	212.3	224.7	205.2	214.4	209.3	193.4	172.1	173.9
MOS < 0.4µm to ≥ 0.3µm		194.1	174	186	190.2	205.8	207.8	177	187.7	192.1	184.9	192.1	190.7
MOS < 0.3µm		201.7	260.6	325.8	350.8	405.8	452.3						
MOS < 0.3µm to ≥ 0.2µm								288.8	241.2	246.6	234.7	151.3	152.1
MOS < 0.2µm								221.8	293.5	317.2	325.8	381.3	415.8
MOS TOTAL		870.5	892.8	988.1	1022.4	1097	1155.4	1158.5	1195.1	1210.4	1169.1	1142.2	1177.5
MOS Foundry wafers in MOS TOTAL												134.5	154.5
8 inch wafers in MOS TOTAL		480.9	518.3	600.3	622.2	693.7	699.4	705	734.8	745.9	739.9	729.1	759.9
BIPOLAR (5 inch equivalents)		299.8	303.1	308.1	313.6	320.4	325.6	298.9	303.9	291.6	281.5	274.6	269.8
TOTAL IC's (8 inch equivalents)		987.7	1011.3	1108.6	1145.0	1222.3	1282.7	1275.4	1313.9	1324.4	1279.2	1249.6	1283

These statistics are based on data supplied by merchant IC manufacturers who together represent the great majority of the world's IC production.

ITALIC numbers reflect revised inputs



IC CAPACITY UTILISATION

in percent

	1999		2000				2001				2002	
	3Q	4Q	1Q	2Q	3Q	4Q	1Q	2Q	3Q	4Q	1Q	2Q
MOS ≥ 0.7µm	91.5	91.8	93.3	94	95.3	94	80.7	73.3	66.6	66.6	78.2	88.7
MOS < 0.7µm to ≥ 0.4µm	87.7	95.1	95.6	97	97.9	92.8	87.6	67.4	57.9	59.2	70.2	80.6
MOS < 0.4µm to ≥ 0.3µm	91.4	93.7	94	95	98.4	95.2	85.7	65.8	52.7	55.8	68.7	82.2
MOS < 0.3µm	95.5	97.5	97.3	96.2	97.2	92.4						
MOS < 0.3µm to ≥ 0.2µm							86.7	74	56.3	55.3	66.2	78.3
MOS < 0.2µm							81	83.7	79	83.5	90.6	93.4
MOS TOTAL	91.5	94.5	95.2	95.5	97.1	93.4	84.2	73.8	64	66.1	78	86.8
MOS Foundry wafers in MOS TOTAL (no graph)											63	78.3
8 inch wafers in MOS TOTAL	92.4	95.5	97.4	98.3	98.7	96.7	85.8	75.8	66.2	67.4	80.8	89
Other than 8 inch wafers in MOS TOTAL	90.5	93.1	91.9	91.2	94.2	88.4	81.8	70.5	60.6	63.7	72.9	82.8
BIPOLAR	86.1	89.2	89.3	90.7	90	87.4	80.1	67.7	65.6	63.7	70.4	82.8
TOTAL INTEGRATED CIRCUITS	90.9	93.9	94.6	95	96.4	92.8	83.9	73.2	64.2	65.9	77.3	86.4

These statistics are based on data supplied by merchant IC manufacturers who together represent the great majority of the world's IC production.

ITALIC numbers reflect revised inputs