



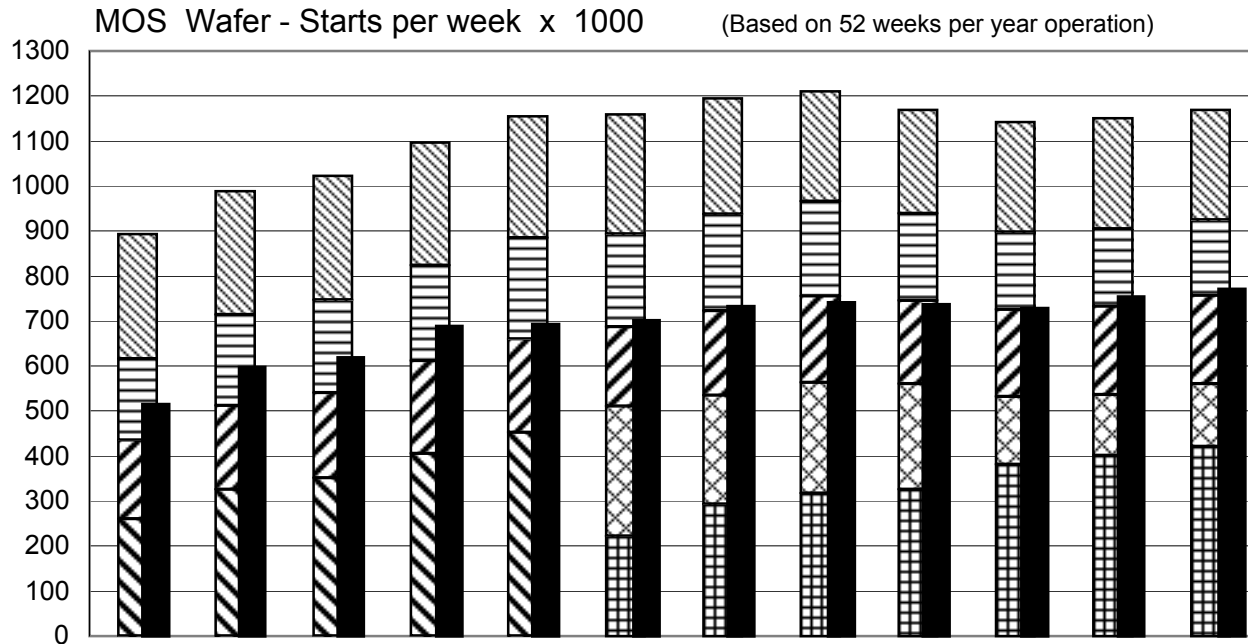
STATISTICS REPORT - 3rd QUARTER 2002

Integrated Circuit Wafer - Fab Capacity

NOTES :

All data in the graph are expressed in 8 inch equivalent wafers.

The line "Total IC's" in the table includes the "Bipolar" data, which were converted for this purpose from 5 inch to 8 inch equivalent wafers by using the factor 0.391.

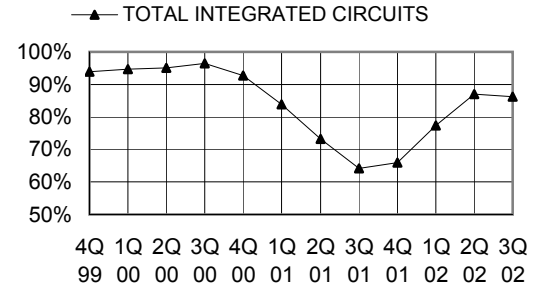
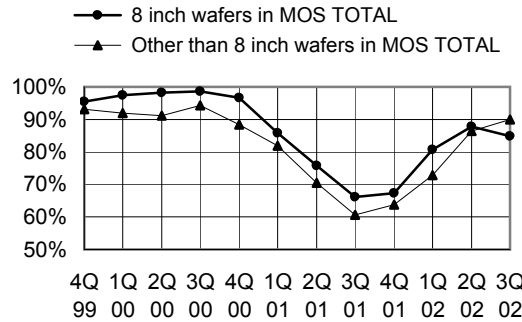
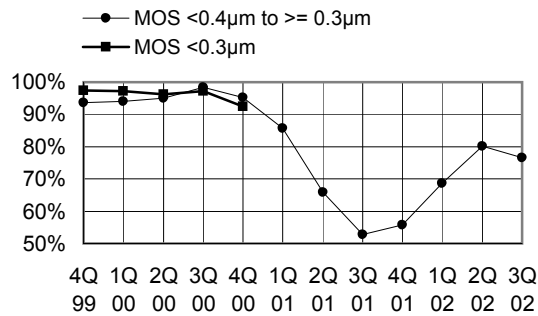
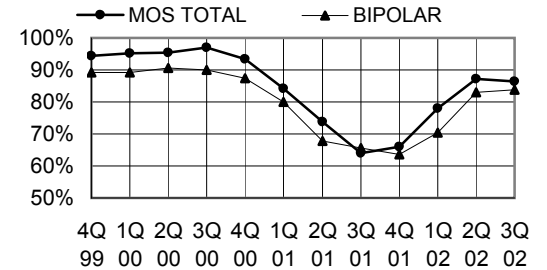
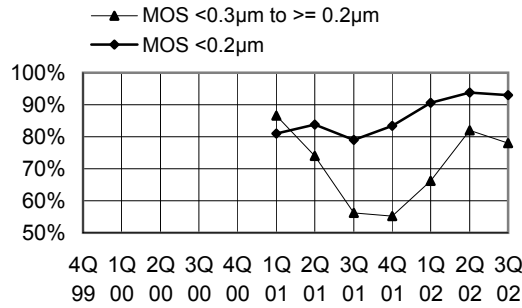
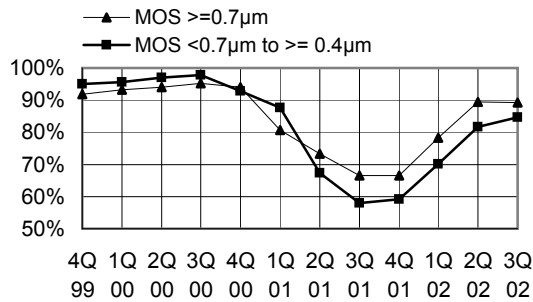


IC WAFER - FAB CAPACITY
in wafer-starts per week x 1000

| | 8 inch equivalents | 1999 | 2000 | | | | 2001 | | | | 2002 | | |
|--|--------------------|--------|--------|--------|--------|--------|--------|--------|--------|--------|--------|---------------|--------|
| | | 4Q | 1Q | 2Q | 3Q | 4Q | 1Q | 2Q | 3Q | 4Q | 1Q | 2Q | 3Q |
| MOS ≥ 0.7µm | | 277.4 | 274.2 | 276.2 | 273.1 | 270.6 | 265.7 | 258.3 | 245.2 | 230.3 | 245.4 | 245.4 | 244.2 |
| MOS < 0.7µm to ≥ 0.4µm | | 180.8 | 202.1 | 205.2 | 212.3 | 224.7 | 205.2 | 214.4 | 209.3 | 193.4 | 172.1 | 172.2 | 168.2 |
| MOS < 0.4µm to ≥ 0.3µm | | 174 | 186 | 190.2 | 205.8 | 207.8 | 177 | 187.7 | 192.1 | 184.9 | 192.1 | 196 | 197.3 |
| MOS < 0.3µm | | 260.6 | 325.8 | 350.8 | 405.8 | 452.3 | | | | | | | |
| MOS < 0.3µm to ≥ 0.2µm | | | | | | | 288.8 | 241.2 | 246.6 | 234.7 | 151.3 | 135.4 | 138.9 |
| MOS < 0.2µm | | | | | | | 221.8 | 293.5 | 317.2 | 325.8 | 381.3 | 401 | 420.8 |
| MOS TOTAL | | 892.8 | 988.1 | 1022.4 | 1097 | 1155.4 | 1158.5 | 1195.1 | 1210.4 | 1169.1 | 1142.2 | 1150.0 | 1169.4 |
| MOS Foundry wafers in MOS TOTAL | | | | | | | | | | | 134.5 | 154.4 | 166 |
| 8 inch wafers in MOS TOTAL | | 518.3 | 600.3 | 622.2 | 693.7 | 699.4 | 705 | 734.8 | 745.9 | 739.9 | 729.1 | 754.3 | 776.8 |
| BIPOLAR (5 inch equivalents) | | 303.1 | 308.1 | 313.6 | 320.4 | 325.6 | 298.9 | 303.9 | 291.6 | 281.5 | 274.6 | 272.2 | 270.6 |
| TOTAL IC's (8 inch equivalents) | | 1011.3 | 1108.6 | 1145.0 | 1222.3 | 1282.7 | 1275.4 | 1313.9 | 1324.4 | 1279.2 | 1249.6 | 1256.4 | 1275.2 |

These statistics are based on data supplied by merchant IC manufacturers who together represent the great majority of the world's IC production.

ITALIC numbers reflect revised inputs



IC CAPACITY UTILISATION

in percent

| | 1999 | 2000 | | | | 2001 | | | | 2002 | | |
|--|-------------|-------------|-------------|-------------|-------------|-------------|-------------|-------------|-------------|-------------|-------------|-------------|
| | 4Q | 1Q | 2Q | 3Q | 4Q | 1Q | 2Q | 3Q | 4Q | 1Q | 2Q | 3Q |
| MOS ≥ 0.7µm | 91.8 | 93.3 | 94 | 95.3 | 94 | 80.7 | 73.3 | 66.6 | 66.6 | 78.2 | 89.5 | 89.3 |
| MOS < 0.7µm to ≥ 0.4µm | 95.1 | 95.6 | 97 | 97.9 | 92.8 | 87.6 | 67.4 | 57.9 | 59.2 | 70.2 | 81.7 | 84.7 |
| MOS < 0.4µm to ≥ 0.3µm | 93.7 | 94 | 95 | 98.4 | 95.2 | 85.7 | 65.8 | 52.7 | 55.8 | 68.7 | 80.1 | 76.5 |
| MOS < 0.3µm | 97.5 | 97.3 | 96.2 | 97.2 | 92.4 | | | | | | | |
| MOS < 0.3µm to ≥ 0.2µm | | | | | | 86.7 | 74 | 56.3 | 55.3 | 66.2 | 82 | 78.1 |
| MOS < 0.2µm | | | | | | 81 | 83.7 | 79 | 83.5 | 90.6 | 93.7 | 93 |
| MOS TOTAL | 94.5 | 95.2 | 95.5 | 97.1 | 93.4 | 84.2 | 73.8 | 64 | 66.1 | 78 | 87.3 | 86.5 |
| MOS Foundry wafers in MOS TOTAL (no graph) | | | | | | | | | | 63 | 79.9 | 71.3 |
| 8 inch wafers in MOS TOTAL | 95.5 | 97.4 | 98.3 | 98.7 | 96.7 | 85.8 | 75.8 | 66.2 | 67.4 | 80.8 | 87.8 | 84.8 |
| Other than 8 inch wafers in MOS TOTAL | 93.1 | 91.9 | 91.2 | 94.2 | 88.4 | 81.8 | 70.5 | 60.6 | 63.7 | 72.9 | 86.5 | 89.9 |
| BIPOLAR | 89.2 | 89.3 | 90.7 | 90 | 87.4 | 80.1 | 67.7 | 65.6 | 63.7 | 70.4 | 83.1 | 83.7 |
| TOTAL INTEGRATED CIRCUITS | 93.9 | 94.6 | 95 | 96.4 | 92.8 | 83.9 | 73.2 | 64.2 | 65.9 | 77.3 | 87 | 86.3 |

These statistics are based on data supplied by merchant IC manufacturers who together represent the great majority of the world's IC production.

ITALIC numbers reflect revised inputs