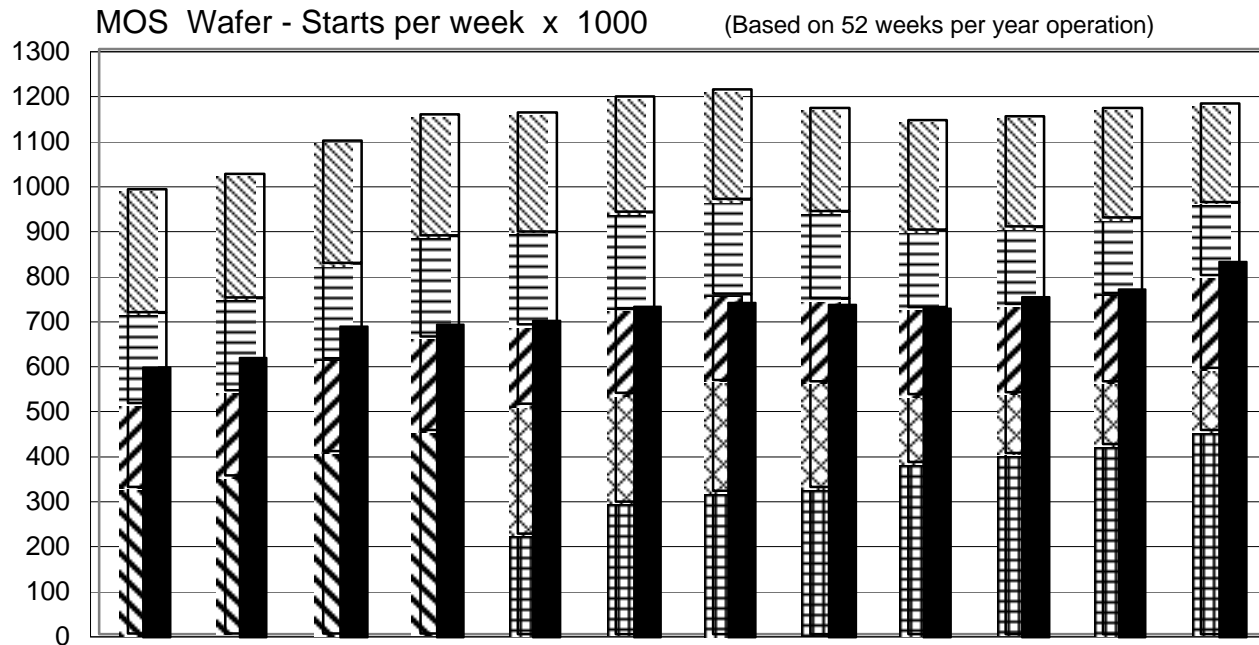


NOTES :

All data in the graph are expressed in 8 inch equivalent wafers.

The line "Total IC's" in the table includes the "Bipolar" data, which were converted for this purpose from 5 inch to 8 inch equivalent wafers by using the factor 0.391.

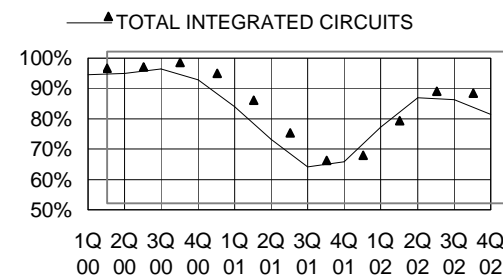
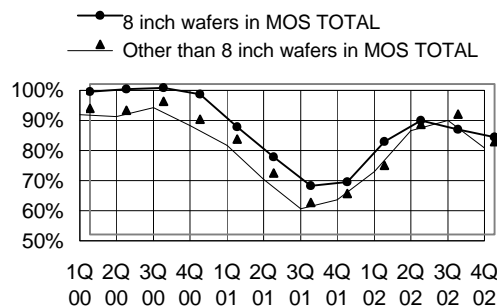
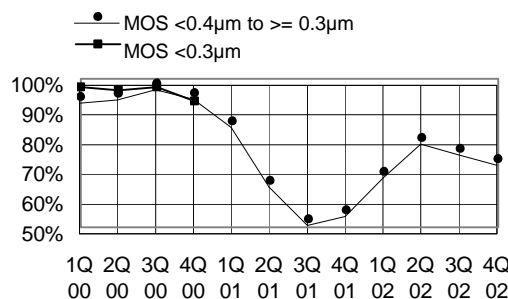
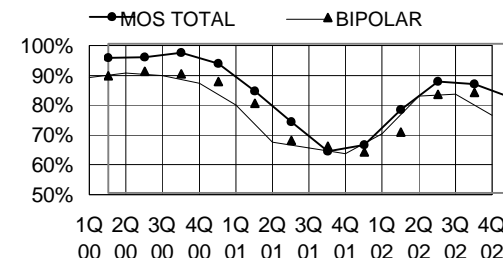
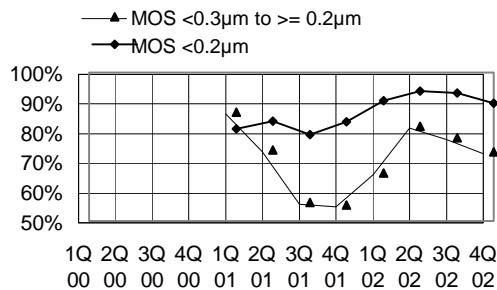
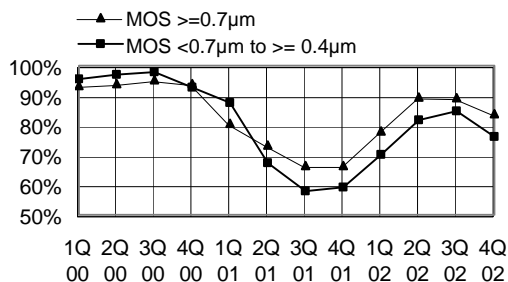


IC WAFER - FAB CAPACITY

in wafer-starts per week x 1000

	8 inch equivalents	2000				2001				2002			
		1Q	2Q	3Q	4Q	1Q	2Q	3Q	4Q	1Q	2Q	3Q	4Q
MOS ≥ 0.7µm		274.2	276.2	273.1	270.6	265.7	258.3	245.2	230.3	245.4	245.4	244.2	220.6
MOS < 0.7µm to ≥ 0.4µm		202.1	205.2	212.3	224.7	205.2	214.4	209.3	193.4	172.1	172.2	168.2	162.4
MOS < 0.4µm to ≥ 0.3µm		186	190.2	205.8	207.8	177	187.7	192.1	184.9	192.1	196	197.3	207.1
MOS < 0.3µm		325.8	350.8	405.8	452.3								
MOS < 0.3µm to ≥ 0.2µm						288.8	241.2	246.6	234.7	151.3	135.4	138.9	136.7
MOS < 0.2µm						221.8	293.5	317.2	325.8	381.3	401	420.8	453
MOS TOTAL		988.1	1022.4	1097	1155.4	1158.5	1195.1	1210.4	1169.1	1142.2	1150	1169.4	1179.8
MOS Foundry wafers in MOS TOTAL										134.5	154.4	166.0	156.7
8 inch wafers in MOS TOTAL		600.3	622.2	693.7	699.4	705	734.8	745.9	739.9	729.1	754.3	776.8	837.1
BIPOLAR (5 inch equivalents)		308.1	313.6	320.4	325.6	298.9	303.9	291.6	281.5	274.6	272.2	270.6	269.4
TOTAL IC's (8 inch equivalents)		1108.6	1145.0	1222.3	1282.7	1275.4	1313.9	1324.4	1279.2	1249.6	1256.4	1275.2	1285.1

These statistics are based on data supplied by merchant IC manufacturers who together represent the great majority of the world's IC production.



IC CAPACITY UTILISATION

in percent

	2000				2001				2002			
	1Q	2Q	3Q	4Q	1Q	2Q	3Q	4Q	1Q	2Q	3Q	4Q
MOS ≥ 0.7µm	93.3	94	95.3	94	80.7	73.3	66.6	66.6	78.2	89.5	89.3	83.9
MOS < 0.7µm to ≥ 0.4µm	95.6	97	97.9	92.8	87.6	67.4	57.9	59.2	70.2	81.7	84.7	76.1
MOS < 0.4µm to ≥ 0.3µm	94	95	98.4	95.2	85.7	65.8	52.7	55.8	68.7	80.1	76.5	73.1
MOS < 0.3µm	97.3	96.2	97.2	92.4								
MOS < 0.3µm to ≥ 0.2µm					86.7	74	56.3	55.3	66.2	82	78.1	73.2
MOS < 0.2µm					81	83.7	79	83.5	90.6	93.7	93	89.6
MOS TOTAL	95.2	95.5	97.1	93.4	84.2	73.8	64	66.1	78	87.3	86.5	81.9
MOS Foundry wafers in MOS TOTAL (no graph)									63	79.9	71.3	61.6
8 inch wafers in MOS TOTAL	97.4	98.3	98.7	96.7	85.8	75.8	66.2	67.4	80.8	87.8	84.8	82.3
Other than 8 inch wafers in MOS TOTAL	91.9	91.2	94.2	88.4	81.8	70.5	60.6	63.7	72.9	86.5	89.9	80.8
BIPOLAR	89.3	90.7	90	87.4	80.1	67.7	65.6	63.7	70.4	83.1	83.7	76.6
TOTAL INTEGRATED CIRCUITS	94.6	95	96.4	92.8	83.9	73.2	64.2	65.9	77.3	87	86.3	81.5

These statistics are based on data supplied by merchant IC manufacturers who together represent the great majority of the world's IC production.