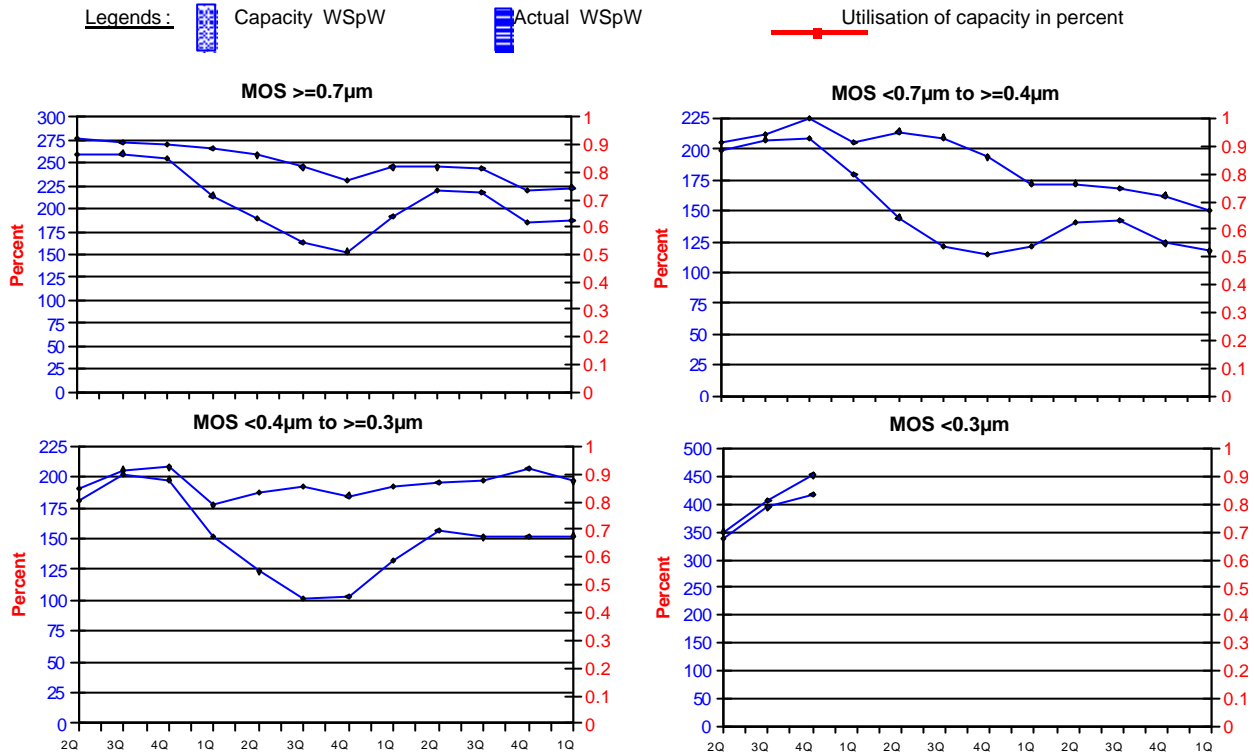


SICAS STATISTICS REPORT - 1st QUARTER 2003

Integrated Circuit Wafer - Fab Capacity and Utilisation

All MOS data are expressed in 8 inch equivalent wafers.

WSpW = Wafer-Starts per Week.



			2Q 00	3Q 00	4Q 00	1Q 01	2Q 01	3Q 01	4Q 01	1Q 02	2Q 02	3Q 02	4Q 02	1Q 03
MOS >=0.7µm	Capacity	Wafer-starts per week x 1000	276.2	273.1	270.6	265.7	258.3	245.2	230.3	245.4	245.4	244.2	220.6	222.9
		% growth re. preceding quarter	0.7	-1.1	-0.9	-1.8	-2.8	-5.1	-6.1	6.6	0.0	-0.5	-9.7	1.0
		% growth re. one year ago	0.9	-1.1	-2.5	-3.1	-6.5	-10.2	-14.9	-7.6	-5.0	-0.4	-4.2	-9.2
	Actual Wafer-Starts	Wafer-starts per week x 1000	259.5	260.2	254.3	214.4	189.3	163.4	153.3	191.9	219.6	218.1	185.1	187.2
		% growth re. preceding quarter	1.4	0.3	-2.3	-15.7	-11.7	-13.7	-6.2	25.2	14.4	-0.7	-15.1	1.1
		% growth re. one year ago	7.2	3	-0.2	-16.2	-27.1	-37.2	-39.7	-10.5	16.0	33.5	20.7	-2.4
Utilisation	n percent (%)	94.0	95.3	94.0	80.7	73.3	66.6	66.6	78.2	89.5	89.3	83.9	84.0	

			2Q 00	3Q 00	4Q 00	1Q 01	2Q 01	3Q 01	4Q 01	1Q 02	2Q 02	3Q 02	4Q 02	1Q 03
MOS <0.7µm to >=0.4µm	Capacity	Wafer-starts per week x1000	205.2	212.3	224.7	205.2	214.4	209.3	193.4	172.1	172.2	168.2	162.4	149.9
		% growth re. preceding quarter	1.5	3.5	5.8	-8.7	4.5	-2.4	-7.6	-11.0	0.1	-2.3	-3.4	-7.7
		% growth re. one year ago	3.9	7	24.3	1.5	4.5	-1.4	-13.9	-16.1	-19.7	-19.6	-16.0	-12.9
	Actual Wafer-Starts	Wafer-starts per week x1000	199	207.9	208.6	179.7	144.4	121.2	114.5	120.8	140.7	142.5	123.6	117.2
		% growth re. preceding quarter	3	4.5	0.3	-13.9	-19.6	-16.1	-5.5	5.5	16.5	1.3	-13.3	-5.2
		% growth re. one year ago	7.2	3	-0.2	-16.2	-27.1	-37.2	-39.7	-10.5	16.0	33.5	20.7	-2.4
Utilisation	n percent (%)	97.0	97.9	92.8	87.6	67.4	57.9	59.2	70.2	81.7	84.7	76.1	78.2	

			2Q 00	3Q 00	4Q 00	1Q 01	2Q 01	3Q 01	4Q 01	1Q 02	2Q 02	3Q 02	4Q 02	1Q 03
MOS <0.4µm to >=0.3µm	Capacity	Wafer-starts per week x1000	190.2	205.8	207.8	177	187.7	192.1	184.9	192.1	196	197.3	207.1	196.6
		% growth re. preceding quarter	2.3	8.2	1.0	-14.8	6.0	2.3	-3.7	3.9	2.0	0.7	5.0	-5.1
		% growth re. one year ago	-3.8	6	19.4	-4.8	-1.3	-6.7	-11.0	8.5	4.4	2.7	12.0	2.3
	Actual Wafer-Starts	Wafer-starts per week x1000	180.7	202.6	197.9	151.7	123.6	101.2	103.1	132	157	151	151.3	152.4
		% growth re. preceding quarter	3.3	12.1	-2.3	-23.3	-18.5	-18.1	1.9	28.0	18.9	-3.8	0.2	0.7
		% growth re. one year ago	-2.8	14.2	21.4	-13.3	-31.6	-50.0	-47.9	-13.0	27.0	49.2	46.8	15.5
Utilisation	n percent (%)	95.0	98.4	95.2	85.7	65.8	52.7	55.8	68.7	80.1	76.5	73.1	77.5	

			2Q 00	3Q 00	4Q 00	1Q 01	2Q 01	3Q 01	4Q 01	1Q 02	2Q 02	3Q 02	4Q 02	1Q 03
MOS <0.3µm	Capacity	Wafer-starts per week x1000	350.8	405.8	452.3									
		% growth re. preceding quarter	7.7	15.7	11.5									
		% growth re. one year ago	93.8	101.2	73.6									
	Actual Wafer-Starts	Wafer-starts per week x1000	337.4	394.4	418.1									
		% growth re. preceding quarter	6.4	16.9	6.0									
		% growth re. one year ago	99.1	104.7	64.6									
Utilisation	n percent (%)	96.2	97.2	92.4										

ITALIC numbers reflect revised inputs

These statistics are based on data supplied by merchant IC manufacturers who together represent the great majority of the world's IC production.

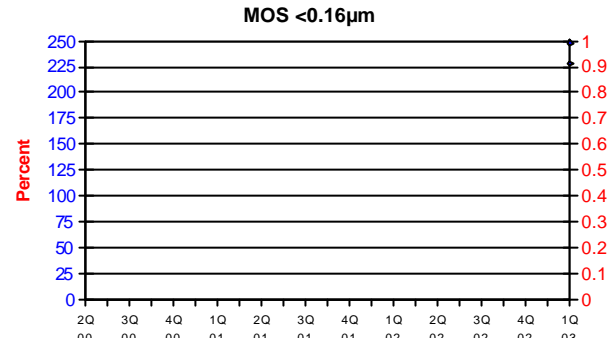
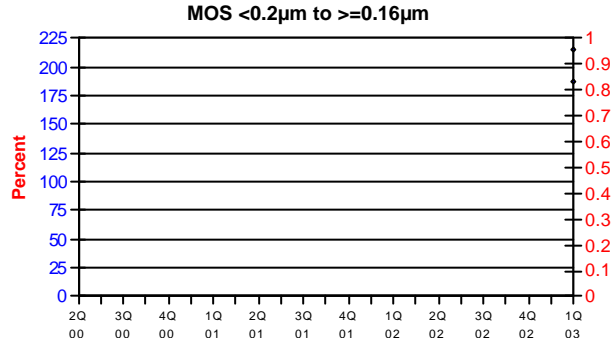
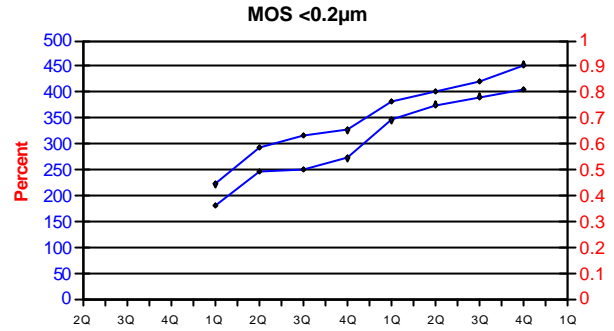
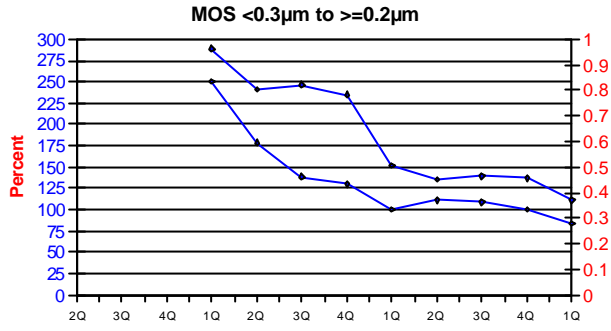


STATISTICS REPORT - 1st QUARTER 2003
Integrated Circuit Wafer - Fab Capacity and Utilisation

All MOS data are expressed in 8 inch equivalent wafers.

WSpW = Wafer-Starts per Week.

Legends: Capacity WSpW Actual WSpW Utilisation of capacity in percent



		2Q 00	3Q 00	4Q 00	1Q 01	2Q 01	3Q 01	4Q 01	1Q 02	2Q 02	3Q 02	4Q 02	1Q 03	
MOS <0.3µm to >=0.2µm	Capacity	Wafer-starts per week x 1000			288.8	241.2	246.6	234.7	151.3	135.4	138.9	136.7	111	
		% growth re. preceding quarter					-16.5	2.2	-4.8	-35.5	-10.5	2.6	-1.6	-18.8
		% growth re. one year ago								-47.6	-43.9	-43.7	-41.8	-26.6
	Actual Wafer-Starts	Wafer-starts per week x 1000				250.3	178.5	138.8	129.8	100.2	111	108.5	100	84
		% growth re. preceding quarter					-28.7	-22.2	-6.5	-22.8	10.8	-2.3	-7.8	-16.0
		% growth re. one year ago								-60.0	-37.8	-21.8	-23.0	-16.2
Utilisation	n percent (%)				86.7	74.0	56.3	55.3	66.2	82.0	78.1	73.2	75.7	

		2Q 00	3Q 00	4Q 00	1Q 01	2Q 01	3Q 01	4Q 01	1Q 02	2Q 02	3Q 02	4Q 02	1Q 03	
MOS <0.2µm	Capacity	Wafer-starts per week x1000			221.8	293.5	317.2	325.8	381.3	401	420.8	453		
		% growth re. preceding quarter					32.3	8.1	2.7	17.0	5.2	4.9	7.7	
		% growth re. one year ago								71.9	36.6	32.7	39.0	
	Actual Wafer-Starts	Wafer-starts per week x1000				179.7	245.6	250.5	271.9	345.5	375.8	391.3	406.1	
		% growth re. preceding quarter					36.7	2.0	8.5	27.1	8.8	4.1	3.8	
		% growth re. one year ago								92.3	53.0	56.2	49.4	
Utilisation	n percent (%)				81.0	83.7	79.0	83.5	90.6	93.7	93.0	89.6		

		2Q 00	3Q 00	4Q 00	1Q 01	2Q 01	3Q 01	4Q 01	1Q 02	2Q 02	3Q 02	4Q 02	1Q 03	
MOS <0.2µm to >=0.16µm	Capacity	Wafer-starts per week x1000											215.2	
		% growth re. preceding quarter												
		% growth re. one year ago												
	Actual Wafer-Starts	Wafer-starts per week x1000												186.9
		% growth re. preceding quarter												
		% growth re. one year ago												
Utilisation	n percent (%)												86.8	

		2Q 00	3Q 00	4Q 00	1Q 01	2Q 01	3Q 01	4Q 01	1Q 02	2Q 02	3Q 02	4Q 02	1Q 03	
MOS <0.16µm	Capacity	Wafer-starts per week x1000											248	
		% growth re. preceding quarter												
		% growth re. one year ago												
	Actual Wafer-Starts	Wafer-starts per week x1000												227.9
		% growth re. preceding quarter												
		% growth re. one year ago												
Utilisation	n percent (%)												91.9	

ITALIC numbers reflect revised inputs

These statistics are based on data supplied by merchant IC manufacturers who together represent the great majority of the world's IC production.



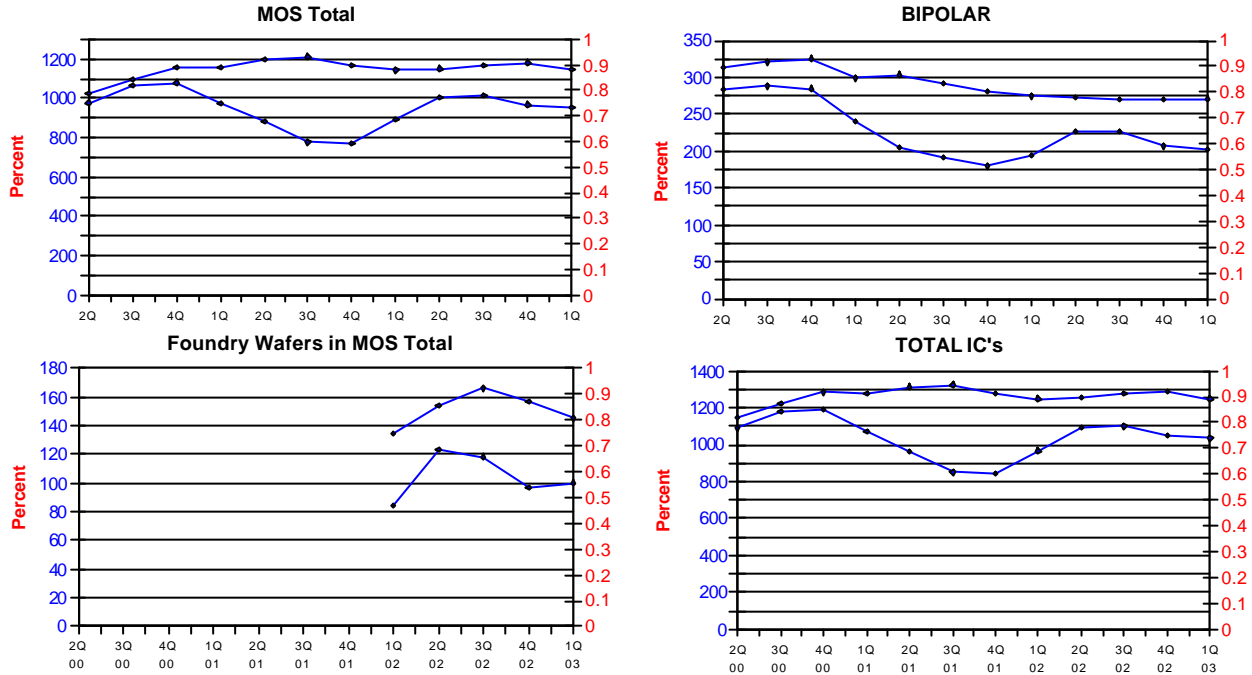
STATISTICS REPORT - 1st QUARTER 2003
Integrated Circuit Wafer - Fab Capacity and Utilisation

All MOS data are expressed in 8 inch equivalent wafers. Bipolar data are expressed in 5 inch equivalent wafers.

"Total IC's" include Bipolar data, which were converted for this purpose from 5 inch to 8 inch equivalent wafers by the factor 0.391.

WSpW = Wafer-Starts per Week.

Legends : Capacity WSpW Actual WSpW Utilisation of capacity in percent



		2Q 00	3Q 00	4Q 00	1Q 01	2Q 01	3Q 01	4Q 01	1Q 02	2Q 02	3Q 02	4Q 02	1Q 03	
MOS Total	Capacity	Wafer-starts per week x 1000	1022.4	1097	1155.4	1158.5	1195.1	1210.4	1169.1	1142.2	1150	1169.4	1179.8	1143.6
		% growth re. preceding quarter	3.5	7.3	5.3	0.3	3.2	1.3	-3.4	-2.3	0.7	1.7	0.9	-3.1
		% growth re. one year ago	19.3	26	29.4	17.3	16.9	10.3	1.2	-1.4	-3.8	-3.4	0.9	0.12
	Actual Wafer-Starts	Wafer-starts per week x 1000	976.6	1065.1	1078.9	975.8	881.4	775.1	772.6	890.4	1004.1	1011.4	966.1	955.6
		% growth re. preceding quarter	3.8	9.1	1.3	-9.6	-9.7	-12.1	-0.3	15.2	12.8	0.7	-4.5	-1.1
		% growth re. one year ago	26.8	33.7	27.9	3.7	-9.7	-27.2	-28.4	-8.8	13.9	30.5	25.0	7.3
Utilisation	n percent (%)	95.5	97.1	93.4	84.2	73.8	64.0	66.1	78.0	87.3	86.5	81.9	83.6	

		3Q 00	4Q 00	1Q 01	2Q 01	3Q 01	4Q 01	1Q 02	2Q 02	3Q 02	4Q 02	1Q 03		
BIPOLAR (5 inch equivs.)	Capacity	Wafer-starts per week x1000	313.6	320.4	325.6	298.9	303.9	291.6	281.5	274.6	272.2	270.6	269.4	271.1
		% growth re. preceding quarter	1.8	2.2	1.6	-8.2	1.7	-4.0	-3.5	-2.5	-0.9	-0.6	-0.4	0.6
		% growth re. one year ago	2.7	6.9	7.4	-3	-3.1	-9.0	-13.5	-8.1	-10.4	-7.2	-4.3	-1.3
	Actual Wafer-Starts	Wafer-starts per week x1000	284.3	288.2	284.7	239.5	205.8	191.2	179.3	193.4	226.1	226.4	206.4	201.7
		% growth re. preceding quarter	3.3	1.4	-1.2	-15.9	-14.1	-7.1	-6.2	7.9	16.9	0.1	-8.8	-2.3
		% growth re. one year ago	11.8	11.7	5.3	-13	-27.6	-33.7	-37.0	-19.2	9.9	18.4	15.1	4.3
Utilisation	n percent (%)	90.7	90.0	87.4	80.1	67.7	65.6	63.7	70.4	83.1	83.7	76.6	74.4	

		2Q 01	3Q 01	4Q 01	1Q 02	2Q 02	3Q 02	4Q 02	1Q 03	
Foundry Wafers in MOS Total	Capacity	Wafer-starts per week x1000				134.5	154.4	166	156.7	145
		% growth re. preceding quarter					14.8	7.5	-5.6	-7.5
		% growth re. one year ago								7.8
	Actual Wafer-Starts	Wafer-starts per week x1000				84.7	123.3	118.4	96.6	100.2
		% growth re. preceding quarter					45.6	-4.0	-18.4	3.7
		% growth re. one year ago								18.3
Utilisation	n percent (%)				63.0	79.9	71.3	61.6	69.1	

		2Q 00	3Q 00	4Q 00	1Q 01	2Q 01	3Q 01	4Q 01	1Q 02	2Q 02	3Q 02	4Q 02	1Q 03	
TOTAL IC's	Capacity	Wafer-starts per week x1000	1145.02	1222.28	1282.71	1275.37	1313.92	1324.42	1279.17	1249.57	1256.43	1275.2	1285.14	1249.6
		% growth re. preceding quarter	3.3	6.7	4.9	-0.6	3.0	0.8	-3.4	-2.3	0.5	1.5	0.8	-2.8
		% growth re. one year ago	17.3	23.8	26.8	15.1	14.8	8.4	-0.3	-2.0	-4.4	-3.7	0.5	0.0
	Actual Wafer-Starts	Wafer-starts per week x1000	1087.76	1177.79	1190.22	1069.44	961.9	849.9	842.7	966.0	1092.51	1099.92	1046.8	1034.46
		% growth re. preceding quarter	3.7	8.3	1.1	-10.1	-10.1	-11.6	-0.84	14.6	13.1	0.7	-4.8	-1.2
		% growth re. one year ago	25.1	31.2	12.6	2	-11.6	-27.8	-29.2	-9.7	13.6	29.4	24.2	7.1
Utilisation	n percent (%)	95.0	96.4	92.8	83.9	73.2	64.2	65.9	77.3	87.0	86.3	81.5	82.8	

ITALIC numbers reflect revised inputs

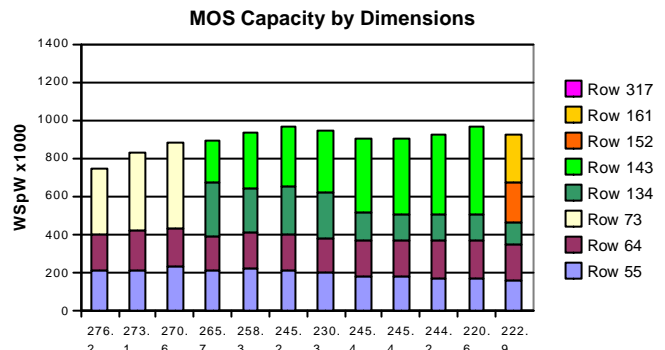
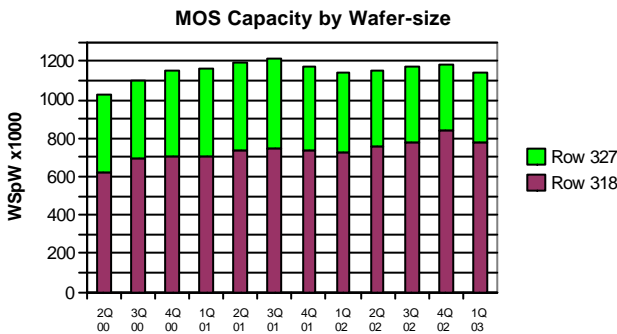
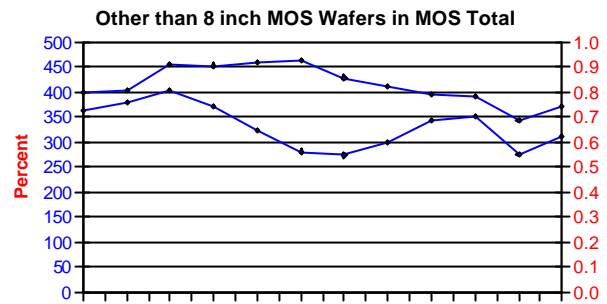
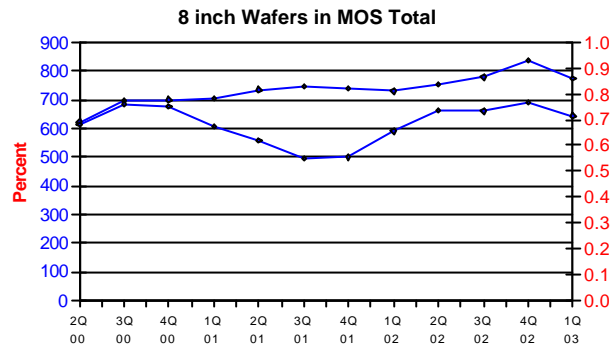
These statistics are based on data supplied by merchant IC manufacturers who together represent the great majority of the world's IC production.



All MOS data are expressed in 8 inch equivalent wafers.

WSpW = Wafer-Starts per Week.

Legends : Capacity WSpW Actual WSpW Utilisation of capacity in percent



		2Q 00	3Q 00	4Q 00	1Q 01	2Q 01	3Q 01	4Q 01	1Q 02	2Q 02	3Q 02	4Q 02	1Q 03	
8 inch wafers in MOS Total	Capacity	Wafer-starts per week x1000	622.2	693.7	699.4	705	734.8	745.9	739.9	729.1	754.3	776.8	837.1	771.8
		% growth re. preceding quarter	3.7	11.5	0.8	0.8	4.2	1.5	-0.8	-1.5	3.5	3.0	7.8	-7.8
		% growth one year ago	30.6	44.3	34.9	17.4	18.1	7.5	5.8	3.4	2.7	4.1	13.1	5.9
	Actual Wafer-Starts	Wafer-starts per week x1000	611.6	684.8	676	605	556.8	493.8	498.7	589.3	662	658.4	689.1	643.1
		% growth re. preceding quarter	4.7	12.0	-1.3	-10.5	-8.0	-11.3	1.0	18.2	12.3	-0.5	4.7	-6.7
		% growth one year ago	39.5	54.1	36.6	3.5	-9.0	-27.9	-26.2	-2.6	18.9	33.3	38.2	9.1
Utilisation	in percent (%)	98.3	98.7	96.7	85.8	75.8	66.2	67.4	80.8	87.8	84.8	82.3	83.3	

		2Q 00	3Q 00	4Q 00	1Q 01	2Q 01	3Q 01	4Q 01	1Q 02	2Q 02	3Q 02	4Q 02	1Q 03	
Other than 8 inch MOS wafers	Capacity	Wafer-starts per week x 1000	400.2	403.3	456	453.5	460.3	464.5	429.2	413.1	395.7	392.6	342.7	371.8
		% growth re. preceding quarter	3.2	0.8	13.1	-0.5	1.5	0.9	-7.6	-3.8	-4.2	-0.8	-12.7	8.5
		% growth one year ago	5.2	3.5	21.8	16.9	15.0	15.2	-5.9	-8.9	-14.0	-15.5	-20.2	-10.0
	Actual Wafer-Starts	Wafer-starts per week x1000	365	380.3	402.9	370.8	324.6	281.3	273.9	301.1	342.1	353	277	312.5
		% growth re. preceding quarter	2.4	4.2	5.9	-8.0	-12.5	-13.3	-2.6	9.9	13.6	3.2	-21.5	12.8
		% growth one year ago	10.1	7.8	15.8	4	-11.1	-26.0	-32.0	-18.8	5.4	25.5	1.1	3.8
Utilisation	in percent (%)	91.2	94.3	88.4	81.8	70.5	60.6	63.8	72.9	86.5	89.9	80.8	84.1	

ITALIC numbers reflect revised inputs

These statistics are based on data supplied by merchant IC manufacturers who together represent the great majority of the world's IC production.