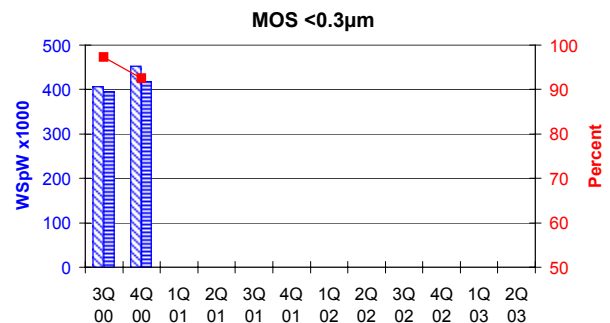
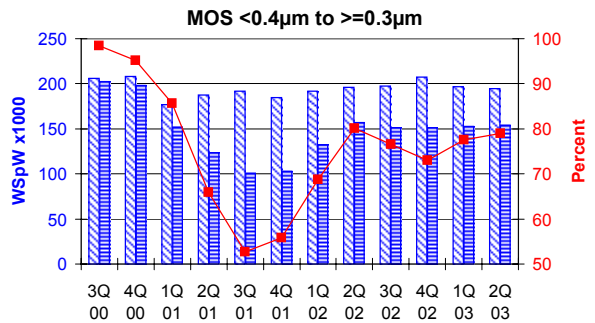
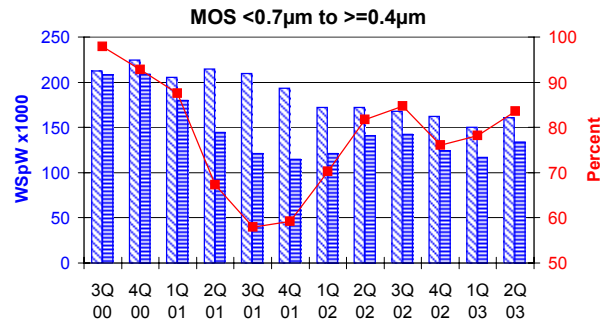
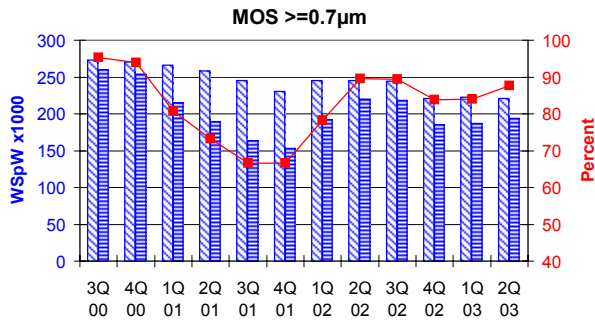


All MOS data are expressed in 8 inch equivalent wafers.

WSpW = Wafer-Starts per Week.

Legends: Capacity WSpW Actual WSpW Utilisation of capacity in percent



			3Q 00	4Q 00	1Q 01	2Q 01	3Q 01	4Q 01	1Q 02	2Q 02	3Q 02	4Q 02	1Q 03	2Q 03
MOS $\geq 0.7\mu\text{m}$	Capacity	Wafer-starts per week x 1000	273.1	270.6	265.7	258.3	245.2	230.3	245.4	245.4	244.2	220.6	222.9	221.3
		% growth re. preceding quarter	-1.1	-0.9	-1.8	-2.8	-5.1	-6.1	6.6	0.0	-0.5	-9.7	1.0	-0.7
		% growth re. one year ago	-1.1	-2.5	-3.1	-6.5	-10.2	-14.9	-7.6	-5.0	-0.4	-4.2	-9.2	-9.8
	Actual Wafer-Starts	Wafer-starts per week x 1000	260.2	254.3	214.4	189.3	163.4	153.3	191.9	219.6	218.1	185.1	187.2	194
		% growth re. preceding quarter	0.3	-2.3	-15.7	-11.7	-13.7	-6.2	25.2	14.4	-0.7	-15.1	1.1	3.6
	% growth re. one year ago	3	-0.2	-16.2	-27.1	-37.2	-39.7	-10.5	16.0	33.5	20.7	-2.4	-11.7	
Utilisation	in percent (%)	95.3	94.0	80.7	73.3	66.6	66.6	78.2	89.5	89.3	83.9	84.0	87.7	

			3Q 00	4Q 00	1Q 01	2Q 01	3Q 01	4Q 01	1Q 02	2Q 02	3Q 02	4Q 02	1Q 03	2Q 03
MOS $< 0.7\mu\text{m}$ to $\geq 0.4\mu\text{m}$	Capacity	Wafer-starts per week x1000	212.3	224.7	205.2	214.4	209.3	193.4	172.1	172.2	168.2	162.4	149.9	160.5
		% growth re. preceding quarter	3.5	5.8	-8.7	4.5	-2.4	-7.6	-11.0	0.1	-2.3	-3.4	-7.7	7.1
		% growth re. one year ago	7	24.3	1.5	4.5	-1.4	-13.9	-16.1	-19.7	-19.6	-16.0	-12.9	-6.8
	Actual Wafer-Starts	Wafer-starts per week x1000	207.9	208.6	179.7	144.4	121.2	114.5	120.8	140.7	142.5	123.6	117.2	134.1
		% growth re. preceding quarter	4.5	0.3	-13.9	-19.6	-16.1	-5.5	5.5	16.5	1.3	-13.3	-5.2	14.4
	% growth re. one year ago	19.4	21.3	-7	27.4	-41.7	-45.1	-32.8	-2.6	17.6	7.9	-3.0	-4.7	
Utilisation	in percent (%)	97.9	92.8	87.6	67.4	57.9	59.2	70.2	81.7	84.7	76.1	78.2	83.6	

			3Q 00	4Q 00	1Q 01	2Q 01	3Q 01	4Q 01	1Q 02	2Q 02	3Q 02	4Q 02	1Q 03	2Q 03
MOS $< 0.4\mu\text{m}$ to $\geq 0.3\mu\text{m}$	Capacity	Wafer-starts per week x1000	205.8	207.8	177	187.7	192.1	184.9	192.1	196	197.3	207.1	196.6	194.9
		% growth re. preceding quarter	8.2	1.0	-14.8	6.0	2.3	-3.7	3.9	2.0	0.7	5.0	-5.1	-0.9
		% growth re. one year ago	6	19.4	-4.8	-1.3	-6.7	-11.0	8.5	4.4	2.7	12.0	2.3	-0.6
	Actual Wafer-Starts	Wafer-starts per week x1000	202.6	197.9	151.7	123.6	101.2	103.1	132	157	151	151.3	152.4	153.8
		% growth re. preceding quarter	12.1	-2.3	-23.3	-18.5	-18.1	1.9	28.0	18.9	-3.8	0.2	0.7	0.9
	% growth re. one year ago	14.2	21.4	-13.3	-31.6	-50.0	-47.9	-13.0	27.0	49.2	46.8	15.5	-2.0	
Utilisation	in percent (%)	98.4	95.2	85.7	65.8	52.7	55.8	68.7	80.1	76.5	73.1	77.5	78.9	

			3Q 00	4Q 00	1Q 01	2Q 01	3Q 01	4Q 01	1Q 02	2Q 02	3Q 02	4Q 02	1Q 03	2Q 03
MOS $< 0.3\mu\text{m}$	Capacity	Wafer-starts per week x1000	405.8	452.3										
		% growth re. preceding quarter	15.7	11.5										
		% growth re. one year ago	101.2	73.6										
	Actual Wafer-Starts	Wafer-starts per week x1000	394.4	418.1										
		% growth re. preceding quarter	16.9	6.0										
	% growth re. one year ago	104.7	64.6											
Utilisation	in percent (%)	97.2	92.4											

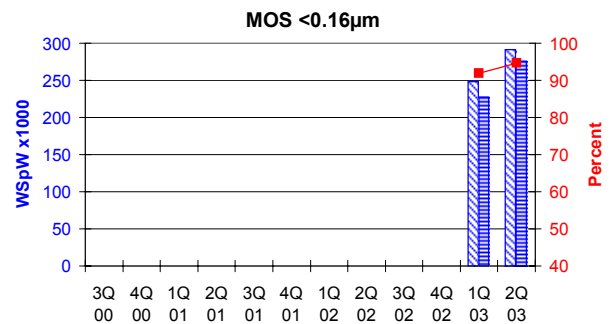
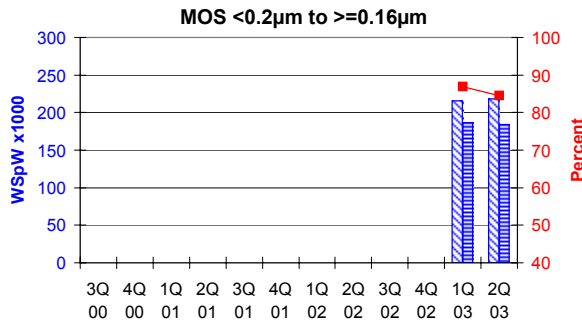
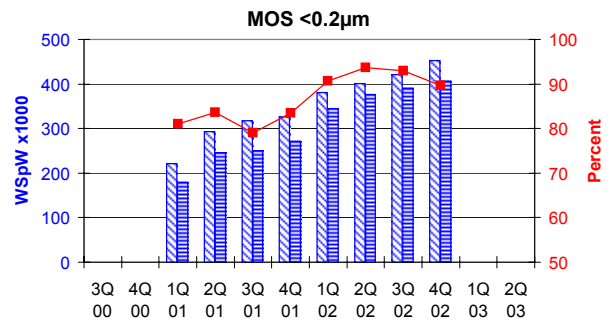
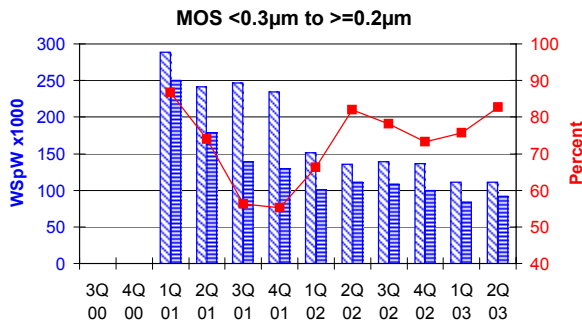
ITALIC numbers reflect revised inputs

These statistics are based on data supplied by merchant IC manufacturers who together represent the great majority of the world's IC production.

All MOS data are expressed in 8 inch equivalent wafers.

WSpW = Wafer-Starts per Week.

Legends : Capacity WSpW Actual WSpW Utilisation of capacity in percent



		3Q 00	4Q 00	1Q 01	2Q 01	3Q 01	4Q 01	1Q 02	2Q 02	3Q 02	4Q 02	1Q 03	2Q 03
MOS <0.3µm to >=0.2µm	Capacity	Wafer-starts per week x 1000		288.8	241.2	246.6	234.7	151.3	135.4	138.9	136.7	111	111.2
		% growth re. preceding quarter			-16.5	2.2	-4.8	-35.5	-10.5	2.6	-1.6	-18.8	0.2
		% growth re. one year ago						-47.6	-43.9	-43.7	-41.8	-26.6	-17.9
	Actual Wafer-Starts	Wafer-starts per week x 1000		250.3	178.5	138.8	129.8	100.2	111	108.5	100	84	92
		% growth re. preceding quarter			-28.7	-22.2	-6.5	-22.8	10.8	-2.3	-7.8	-16.0	9.5
		% growth re. one year ago						-60.0	-37.8	-21.8	-23.0	-16.2	-17.1
Utilisation	in percent (%)			86.7	74.0	56.3	55.3	66.2	82.0	78.1	73.2	75.7	82.7

		3Q 00	4Q 00	1Q 01	2Q 01	3Q 01	4Q 01	1Q 02	2Q 02	3Q 02	4Q 02	1Q 03	2Q 03
MOS <0.2µm	Capacity	Wafer-starts per week x1000		221.8	293.5	317.2	325.8	381.3	401	420.8	453		
		% growth re. preceding quarter			32.3	8.1	2.7	17.0	5.2	4.9	7.7		
		% growth re. one year ago						71.9	36.6	32.7	39.0		
	Actual Wafer-Starts	Wafer-starts per week x1000		179.7	245.6	250.5	271.9	345.5	375.8	391.3	406.1		
		% growth re. preceding quarter			36.7	2.0	8.5	27.1	8.8	4.1	3.8		
		% growth re. one year ago						92.3	53.0	56.2	49.4		
Utilisation	in percent (%)		81.0	83.7	79.0	83.5	90.6	93.7	93.0	89.6			

		3Q 00	4Q 00	1Q 01	2Q 01	3Q 01	4Q 01	1Q 02	2Q 02	3Q 02	4Q 02	1Q 03	2Q 03	
MOS <0.2µm to >=0.16µm	Capacity	Wafer-starts per week x1000										215.2	217.8	
		% growth re. preceding quarter											1.2	
		% growth re. one year ago												
	Actual Wafer-Starts	Wafer-starts per week x1000											186.9	184.1
		% growth re. preceding quarter												-1.5
		% growth re. one year ago												
Utilisation	in percent (%)											86.8	84.5	

		3Q 00	4Q 00	1Q 01	2Q 01	3Q 01	4Q 01	1Q 02	2Q 02	3Q 02	4Q 02	1Q 03	2Q 03	
MOS <0.16µm	Capacity	Wafer-starts per week x1000										248	291.4	
		% growth re. preceding quarter											17.5	
		% growth re. one year ago												
	Actual Wafer-Starts	Wafer-starts per week x1000											227.9	276
		% growth re. preceding quarter												21.1
		% growth re. one year ago												
Utilisation	in percent (%)											91.9	94.7	

ITALIC numbers reflect revised inputs

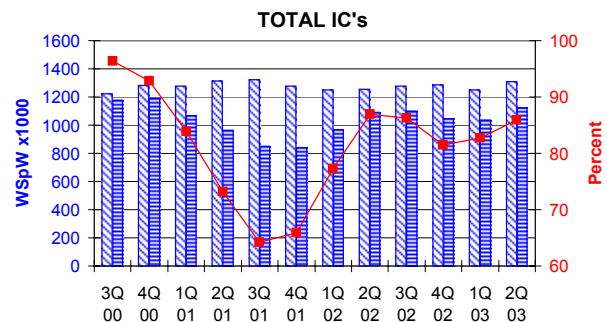
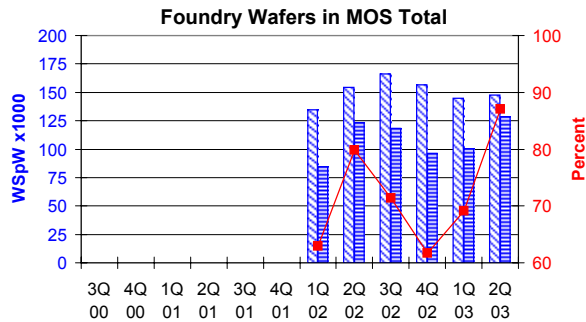
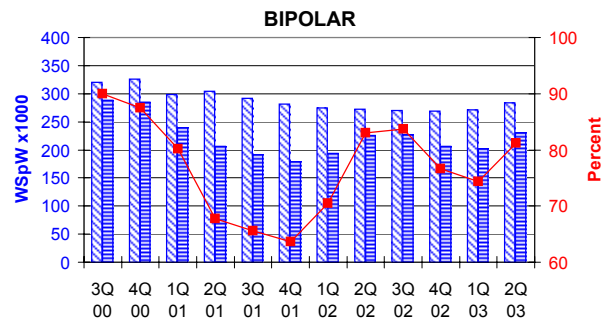
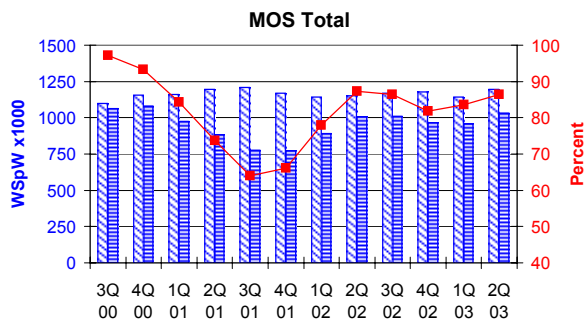
These statistics are based on data supplied by merchant IC manufacturers who together represent the great majority of the world's IC production.

All MOS data are expressed in 8 inch equivalent wafers. Bipolar data are expressed in 5 inch equivalent wafers.

"Total IC's" include Bipolar data, which were converted for this purpose from 5 inch to 8 inch equivalent wafers by the factor 0.391.

WSpW = Wafer-Starts per Week.

Legends: Capacity WSpW Actual WSpW Utilisation of capacity in percent



		3Q 00	4Q 00	1Q 01	2Q 01	3Q 01	4Q 01	1Q 02	2Q 02	3Q 02	4Q 02	1Q 03	2Q 03	
MOS Total	Capacity	Wafer-starts per week x 1000	1097	1155.4	1158.5	1195.1	1210.4	1169.1	1142.2	1150	1169.4	1179.8	1143.6	1197.1
		% growth re. preceding quarter	7.3	5.3	0.3	3.2	1.3	-3.4	-2.3	0.7	1.7	0.9	-3.1	4.7
		% growth re. one year ago	26	29.4	17.3	16.9	10.3	1.2	-1.4	-3.8	-3.4	0.9	0.1	4.1
	Actual Wafer-Starts	Wafer-starts per week x 1000	1065.1	1078.9	975.8	881.4	775.1	772.6	890.4	1004.1	1011.4	966.1	955.6	1034
		% growth re. one year ago	9.1	1.3	-9.6	-9.7	-12.1	-0.3	15.2	12.8	0.7	-4.5	-1.1	8.2
Utilisation	in percent (%)	97.1	93.4	84.2	73.8	64.0	66.1	78.0	87.3	86.5	81.9	83.6	86.4	

		3Q 00	4Q 00	1Q 01	2Q 01	3Q 01	4Q 01	1Q 02	2Q 02	3Q 02	4Q 02	1Q 03	2Q 03	
BIPOLAR (5 inch equivs.)	Capacity	Wafer-starts per week x1000	320.4	325.6	298.9	303.9	291.6	281.5	274.6	272.2	270.6	269.4	271.1	284.3
		% growth re. preceding quarter	2.2	1.6	-8.2	1.7	-4.0	-3.5	-2.5	-0.9	-0.6	-0.4	0.6	4.9
		% growth re. one year ago	6.9	7.4	-3	-3.1	-9.0	-13.5	-8.1	-10.4	-7.2	-4.3	-1.3	4.4
	Actual Wafer-Starts	Wafer-starts per week x1000	288.2	284.7	239.5	205.8	191.2	179.3	193.4	226.1	226.4	206.4	201.7	230.7
		% growth re. one year ago	11.7	5.3	-13	-27.6	-33.7	-37.0	-19.2	9.9	18.4	15.1	4.3	2.0
Utilisation	in percent (%)	90.0	87.4	80.1	67.7	65.6	63.7	70.4	83.1	83.7	76.6	74.4	81.1	

		3Q 00	4Q 00	1Q 01	2Q 01	3Q 01	4Q 01	1Q 02	2Q 02	3Q 02	4Q 02	1Q 03	2Q 03
Foundry Wafers in MOS Total	Capacity	Wafer-starts per week x1000						134.5	154.4	166	156.7	145	147.6
		% growth re. preceding quarter							14.8	7.5	-5.6	-7.5	1.8
		% growth re. one year ago										7.8	-4.4
	Actual Wafer-Starts	Wafer-starts per week x1000						84.7	123.3	118.4	96.6	100.2	128.4
		% growth re. one year ago							45.6	-4.0	-18.4	3.7	28.1
Utilisation	in percent (%)						63.0	79.9	71.3	61.6	69.1	87.0	

		3Q 00	4Q 00	1Q 01	2Q 01	3Q 01	4Q 01	1Q 02	2Q 02	3Q 02	4Q 02	1Q 03	2Q 03	
TOTAL IC's	Capacity	Wafer-starts per week x1000	1222.28	1282.71	1275.37	1313.92	1324.42	1279.17	1249.57	1256.43	1275.2	1285.14	1249.6	1308.26
		% growth re. preceding quarter	6.7	4.9	-0.6	3.0	0.8	-3.4	-2.3	0.5	1.5	0.8	-2.8	4.7
		% growth re. one year ago	23.8	26.8	15.1	14.8	8.4	-0.3	-2.0	-4.4	-3.7	0.5	0.0	4.1
	Actual Wafer-Starts	Wafer-starts per week x1000	1177.79	1190.22	1069.44	961.9	849.9	842.7	966.0	1092.51	1099.92	1046.8	1034.46	1124.2
		% growth re. one year ago	8.3	1.1	-10.1	-10.1	-11.6	-0.8	14.6	13.1	0.7	-4.8	-1.2	8.7
Utilisation	in percent (%)	96.4	92.8	83.9	73.2	64.2	65.9	77.3	87.0	86.3	81.5	82.8	85.9	

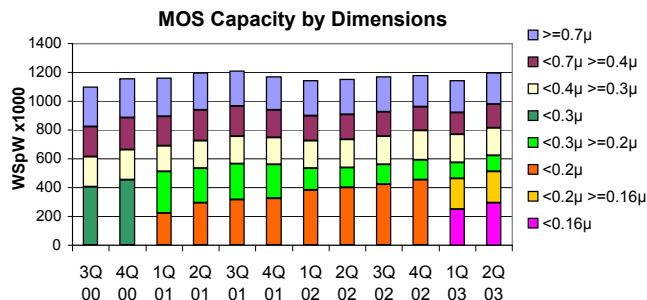
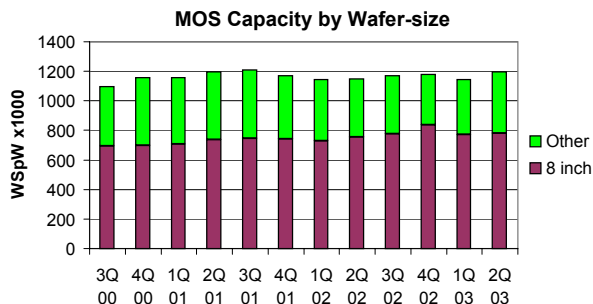
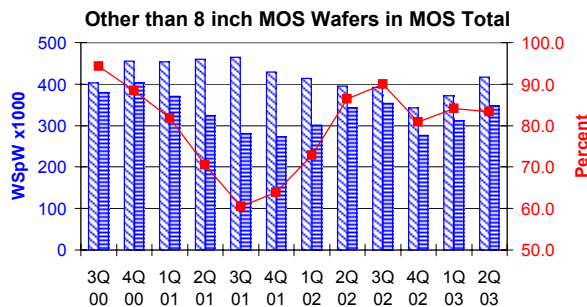
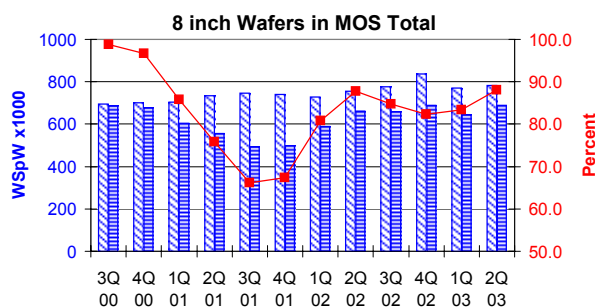
ITALIC numbers reflect revised inputs

These statistics are based on data supplied by merchant IC manufacturers who together represent the great majority of the world's IC production.

All MOS data are expressed in 8 inch equivalent wafers.

WSpW = Wafer-Starts per Week.

Legends: Capacity WSpW Actual WSpW Utilisation of capacity in percent



			3Q 00	4Q 00	1Q 01	2Q 01	3Q 01	4Q 01	1Q 02	2Q 02	3Q 02	4Q 02	1Q 03	2Q 03
8 inch wafers in MOS Total	Capacity	Wafer-starts per week x1000	693.7	699.4	705	734.8	745.9	739.9	729.1	754.3	776.8	837.1	771.8	781.2
		% growth re. preceding quarter	11.5	0.8	0.8	4.2	1.5	-0.8	-1.5	3.5	3.0	7.8	-7.8	1.2
		% growth one year ago	44.3	34.9	17.4	18.1	7.5	5.8	3.4	2.7	4.1	13.1	5.9	3.6
	Actual Wafer-Starts	Wafer-starts per week x1000	684.8	676	605	556.8	493.8	498.7	589.3	662	658.4	689.1	643.1	687.5
		% growth re. preceding quarter	12.0	-1.3	-10.5	-8.0	-11.3	1.0	18.2	12.3	-0.5	4.7	-6.7	6.9
		% growth one year ago	54.1	36.6	3.5	-9.0	-27.9	-26.2	-2.6	18.9	33.3	38.2	9.1	3.9
Utilisation	in percent (%)	98.7	96.7	85.8	75.8	66.2	67.4	80.8	87.8	84.8	82.3	83.3	88.0	

			3Q 00	4Q 00	1Q 01	2Q 01	3Q 01	4Q 01	1Q 02	2Q 02	3Q 02	4Q 02	1Q 03	2Q 03
Other than 8 inch MOS wafers	Capacity	Wafer-starts per week x 1000	403.3	456	453.5	460.3	464.5	429.2	413.1	395.7	392.6	342.7	371.8	415.9
		% growth re. preceding quarter	0.8	13.1	-0.5	1.5	0.9	-7.6	-3.8	-4.2	-0.8	-12.7	8.5	11.9
		% growth one year ago	3.5	21.8	16.9	15.0	15.2	-5.9	-8.9	-14.0	-15.5	-20.2	-10.0	5.1
	Actual Wafer-Starts	Wafer-starts per week x1000	380.3	402.9	370.8	324.6	281.3	273.9	301.1	342.1	353	277	312.5	346.5
		% growth re. preceding quarter	4.2	5.9	-8.0	-12.5	-13.3	-2.6	9.9	13.6	3.2	-21.5	12.8	10.9
		% growth one year ago	7.8	15.8	4	-11.1	-26.0	-32.0	-18.8	5.4	25.5	1.1	3.8	1.3
Utilisation	in percent (%)	94.3	88.4	81.8	70.5	60.6	63.8	72.9	86.5	89.9	80.8	84.1	83.3	

ITALIC numbers reflect revised inputs

These statistics are based on data supplied by merchant IC manufacturers who together represent the great majority of the world's IC production.