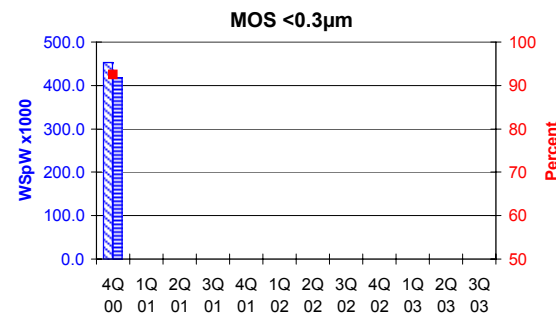
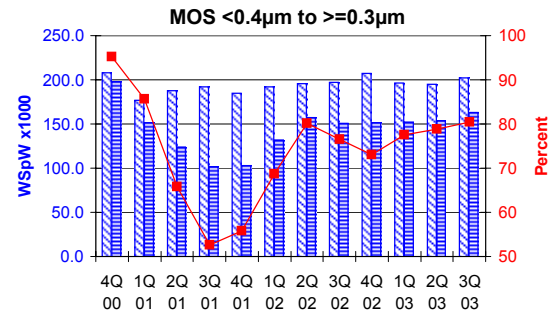
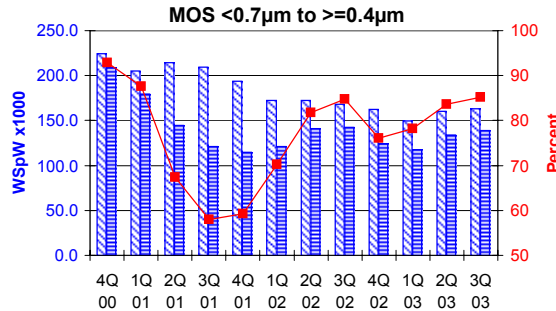
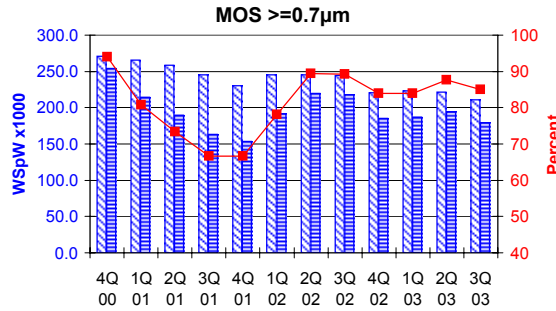


All MOS data are expressed in 8 inch equivalent wafers.

WSpW = Wafer-Starts per Week.

Legends: Capacity WSpW Actual WSpW Utilisation of capacity in percent



			4Q 00	1Q 01	2Q 01	3Q 01	4Q 01	1Q 02	2Q 02	3Q 02	4Q 02	1Q 03	2Q 03	3Q 03
MOS ≥0.7µm	Capacity	Wafer-starts per week x 1000	270.6	265.7	258.3	245.2	230.3	245.4	245.4	244.2	220.6	222.9	221.3	210.7
		% growth re. preceding quarter	-0.9	-1.8	-2.8	-5.1	-6.1	6.6	0.0	-0.5	-9.7	1.0	-0.7	-4.8
		% growth re. one year ago	-2.5	-3.1	-6.5	-10.2	-14.9	-7.6	-5.0	-0.4	-4.2	-9.2	-9.8	-13.7
	Actual Wafer-Starts	Wafer-starts per week x 1000	254.3	214.4	189.3	163.4	153.3	191.9	219.6	218.1	185.1	187.2	194.0	179.1
		% growth re. preceding quarter	-2.3	-15.7	-11.7	-13.7	-6.2	25.2	14.4	-0.7	-15.1	1.1	3.6	-7.7
		% growth re. one year ago	-0.2	-16.2	-27.1	-37.2	-39.7	-10.5	16.0	33.5	20.7	-2.4	-11.7	-17.9
Utilisation	in percent (%)	94.0	80.7	73.3	66.6	66.6	78.2	89.5	89.3	83.9	84.0	87.7	85.0	

			4Q 00	1Q 01	2Q 01	3Q 01	4Q 01	1Q 02	2Q 02	3Q 02	4Q 02	1Q 03	2Q 03	3Q 03
MOS <0.7µm to ≥0.4µm	Capacity	Wafer-starts per week x1000	224.7	205.2	214.4	209.3	193.4	172.1	172.2	168.2	162.4	149.9	160.5	162.9
		% growth re. preceding quarter	5.8	-8.7	4.5	-2.4	-7.6	-11.0	0.1	-2.3	-3.4	-7.7	7.1	1.5
		% growth re. one year ago	24.3	1.5	4.5	-1.4	-13.9	-16.1	-19.7	-19.6	-16.0	-12.9	-6.8	-3.2
	Actual Wafer-Starts	Wafer-starts per week x1000	208.6	179.7	144.4	121.2	114.5	120.8	140.7	142.5	123.6	117.2	134.1	138.7
		% growth re. preceding quarter	0.3	-13.9	-19.6	-16.1	-5.5	5.5	16.5	1.3	-13.3	-5.2	14.4	3.4
		% growth re. one year ago	21.3	-7.0	-27.4	-41.7	-45.1	-32.8	-2.6	17.6	7.9	-3.0	-4.7	-2.7
Utilisation	in percent (%)	92.8	87.6	67.4	57.9	59.2	70.2	81.7	84.7	76.1	78.2	83.6	85.1	

			4Q 00	1Q 01	2Q 01	3Q 01	4Q 01	1Q 02	2Q 02	3Q 02	4Q 02	1Q 03	2Q 03	3Q 03
MOS <0.4µm to ≥0.3µm	Capacity	Wafer-starts per week x1000	207.8	177.0	187.7	192.1	184.9	192.1	196.0	197.3	207.1	196.6	194.9	202.5
		% growth re. preceding quarter	1.0	-14.8	6.0	2.3	-3.7	3.9	2.0	0.7	5.0	-5.1	-0.9	3.9
		% growth re. one year ago	19.4	-4.8	-1.3	-6.7	-11.0	8.5	4.4	2.7	12.0	2.3	-0.6	2.6
	Actual Wafer-Starts	Wafer-starts per week x1000	197.9	151.7	123.6	101.2	103.1	132.0	157.0	151.0	151.3	152.4	153.8	162.9
		% growth re. preceding quarter	-2.3	-23.3	-18.5	-18.1	1.9	28.0	18.9	-3.8	0.2	0.7	0.9	5.9
		% growth re. one year ago	21.4	-13.3	-31.6	-50.0	-47.9	-13.0	27.0	49.2	46.8	15.5	-2.0	7.9
Utilisation	in percent (%)	95.2	85.7	65.8	52.7	55.8	68.7	80.1	76.5	73.1	77.5	78.9	80.4	

			4Q 00	1Q 01	2Q 01	3Q 01	4Q 01	1Q 02	2Q 02	3Q 02	4Q 02	1Q 03	2Q 03	3Q 03
MOS <0.3µm	Capacity	Wafer-starts per week x1000	452.3											
		% growth re. preceding quarter	11.5											
		% growth re. one year ago	73.6											
	Actual Wafer-Starts	Wafer-starts per week x1000	418.1											
		% growth re. preceding quarter	6.0											
		% growth re. one year ago	64.6											
Utilisation	in percent (%)	92.4												

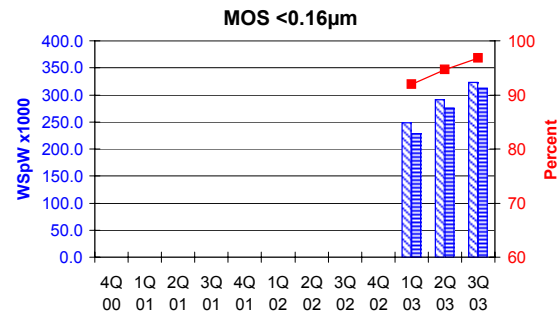
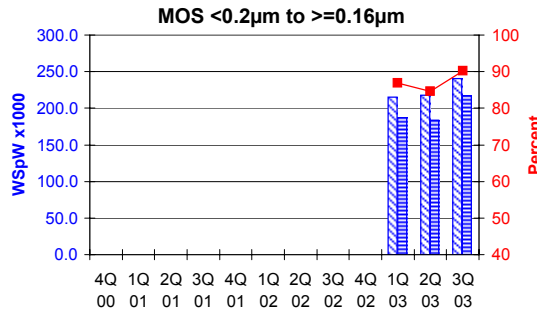
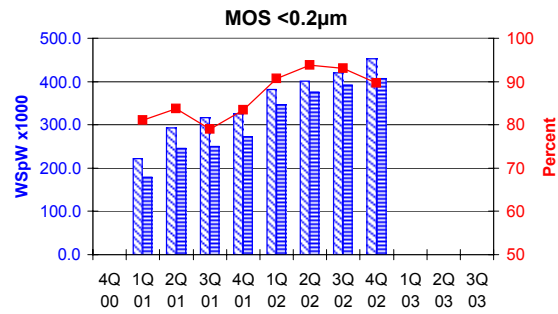
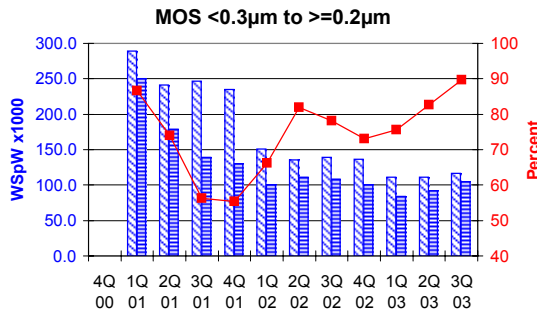
ITALIC numbers reflect revised inputs

These statistics are based on data supplied by merchant IC manufacturers who together represent the great majority of the world's IC production.

All MOS data are expressed in 8 inch equivalent wafers.

WSpW = Wafer-Starts per Week.

Legends: Capacity WSpW Actual WSpW Utilisation of capacity in percent



		4Q 00	1Q 01	2Q 01	3Q 01	4Q 01	1Q 02	2Q 02	3Q 02	4Q 02	1Q 03	2Q 03	3Q 03	
MOS <0.3µm to ≥0.2µm	Capacity	Wafer-starts per week x 1000	288.8	241.2	246.6	234.7	151.3	135.4	138.9	136.7	111.0	111.2	116.8	
		% growth re. preceding quarter			-16.5	2.2	-4.8	-35.5	-10.5	2.6	-1.6	-18.8	0.2	5.0
		% growth re. one year ago						-47.6	-43.9	-43.7	-41.8	-26.6	-17.9	-15.9
	Actual Wafer-Starts	Wafer-starts per week x 1000	250.3	178.5	138.8	129.8	100.2	111.0	108.5	100.0	84.0	92.0	104.7	
		% growth re. preceding quarter			-28.7	-22.2	-6.5	-22.8	10.8	-2.3	-7.8	-16.0	9.5	13.8
		% growth re. one year ago						-60.0	-37.8	-21.8	-23.0	-16.2	-17.1	-3.5
Utilisation	in percent (%)	86.7	74.0	56.3	55.3	66.2	82.0	78.1	73.2	75.7	82.7	89.6		

		4Q 00	1Q 01	2Q 01	3Q 01	4Q 01	1Q 02	2Q 02	3Q 02	4Q 02	1Q 03	2Q 03	3Q 03
MOS <0.2µm	Capacity	Wafer-starts per week x1000	221.8	293.5	317.2	325.8	381.3	401.0	420.8	453.0			
		% growth re. preceding quarter		32.3	8.1	2.7	17.0	5.2	4.9	7.7			
		% growth re. one year ago					71.9	36.6	32.7	39.0			
	Actual Wafer-Starts	Wafer-starts per week x1000	179.7	245.6	250.5	271.9	345.5	375.8	391.3	406.1			
		% growth re. preceding quarter		36.7	2.0	8.5	27.1	8.8	4.1	3.8			
		% growth re. one year ago					92.3	53.0	56.2	49.4			
Utilisation	in percent (%)	81.0	83.7	79.0	83.5	90.6	93.7	93.0	89.6				

		4Q 00	1Q 01	2Q 01	3Q 01	4Q 01	1Q 02	2Q 02	3Q 02	4Q 02	1Q 03	2Q 03	3Q 03
MOS <0.2µm to ≥0.16µm	Capacity	Wafer-starts per week x1000									215.2	217.6	240.4
		% growth re. preceding quarter										1.1	10.5
		% growth re. one year ago											
	Actual Wafer-Starts	Wafer-starts per week x1000									186.9	184.1	216.7
		% growth re. preceding quarter										-1.5	17.7
		% growth re. one year ago											
Utilisation	in percent (%)									86.8	84.6	90.1	

		4Q 00	1Q 01	2Q 01	3Q 01	4Q 01	1Q 02	2Q 02	3Q 02	4Q 02	1Q 03	2Q 03	3Q 03
MOS <0.16µm	Capacity	Wafer-starts per week x1000									248.0	291.4	322.5
		% growth re. preceding quarter										17.5	10.7
		% growth re. one year ago											
	Actual Wafer-Starts	Wafer-starts per week x1000									227.9	276.0	312.1
		% growth re. preceding quarter										21.1	13.1
		% growth re. one year ago											
Utilisation	in percent (%)									91.9	94.7	96.8	

ITALIC numbers reflect revised inputs

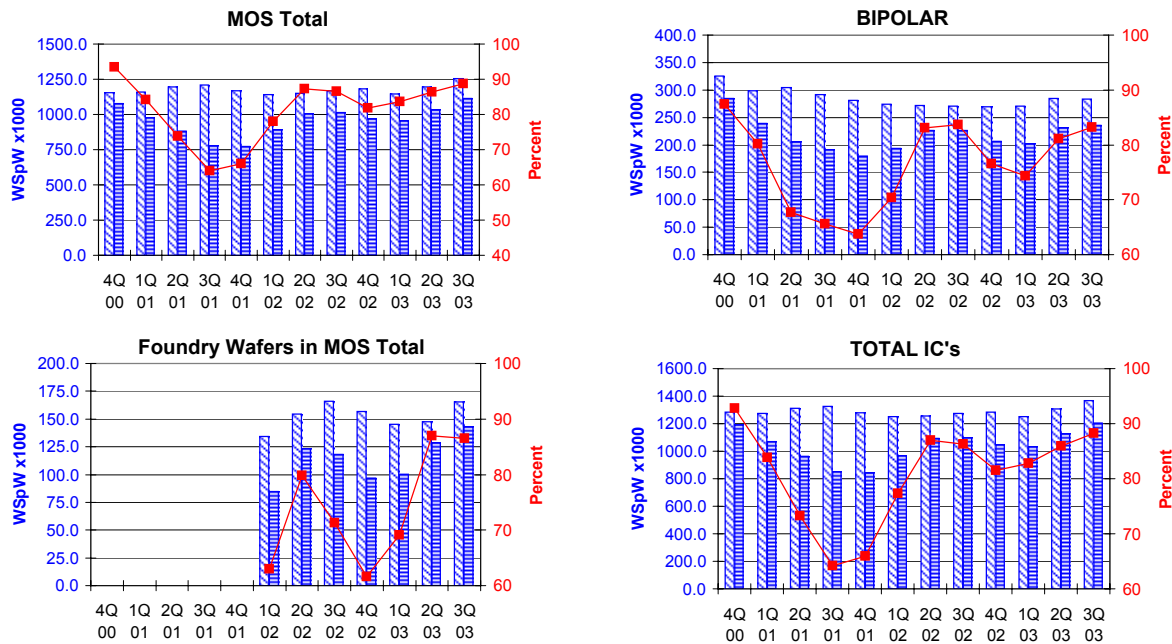
These statistics are based on data supplied by merchant IC manufacturers who together represent the great majority of the world's IC production.

All MOS data are expressed in 8 inch equivalent wafers. Bipolar data are expressed in 5 inch equivalent wafers.

"Total IC's" include Bipolar data, which were converted for this purpose from 5 inch to 8 inch equivalent wafers by the factor 0.391.

WSpW = Wafer-Starts per Week.

Legends: Capacity WSpW Actual WSpW Utilisation of capacity in percent



		4Q 00	1Q 01	2Q 01	3Q 01	4Q 01	1Q 02	2Q 02	3Q 02	4Q 02	1Q 03	2Q 03	3Q 03	
MOS Total	Capacity	Wafer-starts per week x 1000	1155.4	1158.5	1195.1	1210.4	1169.1	1142.2	1150.0	1169.4	1179.8	1143.6	1196.9	1255.8
		% growth re. preceding quarter	5.3	0.3	3.2	1.3	-3.4	-2.3	0.7	1.7	0.9	-3.1	4.7	4.9
		% growth re. one year ago	29.4	17.3	16.9	10.3	1.2	-1.4	-3.8	-3.4	0.9	0.1	4.1	7.4
	Actual Wafer-Starts	Wafer-starts per week x 1000	1078.9	975.8	881.4	775.1	772.6	890.4	1004.1	1011.4	966.1	955.6	1034.0	1114.2
		% growth re. preceding quarter	1.3	-9.6	-9.7	-12.1	-0.3	15.2	12.8	0.7	-4.5	-1.1	8.2	7.8
		% growth re. one year ago	27.9	3.7	-9.7	-27.2	-28.4	-8.8	13.9	30.5	25.0	7.3	3.0	10.2
Utilisation	in percent (%)	93.4	84.2	73.8	64.0	66.1	78.0	87.3	86.5	81.9	83.6	86.4	88.7	

		4Q 00	1Q 01	2Q 01	3Q 01	4Q 01	1Q 02	2Q 02	3Q 02	4Q 02	1Q 03	2Q 03	3Q 03	
BIPOLAR (5 inch equivs.)	Capacity	Wafer-starts per week x1000	325.6	298.9	303.9	291.6	281.5	274.6	272.2	270.6	269.4	271.1	284.3	283.5
		% growth re. preceding quarter	1.6	-8.2	1.7	-4.0	-3.5	-2.5	-0.9	-0.6	-0.4	0.6	4.9	-0.3
		% growth re. one year ago	7.4	-3.0	-3.1	-9.0	-13.5	-8.1	-10.4	-7.2	-4.3	-1.3	4.4	4.8
	Actual Wafer-Starts	Wafer-starts per week x1000	284.7	239.5	205.8	191.2	179.3	193.4	226.1	226.4	206.4	201.7	230.7	235.8
		% growth re. preceding quarter	-1.2	-15.9	-14.1	-7.1	-6.2	7.9	16.9	0.1	-8.8	-2.3	14.4	2.2
		% growth re. one year ago	5.3	-13.0	-27.6	-33.7	-37.0	-19.2	9.9	18.4	15.1	4.3	2.0	4.2
Utilisation	in percent (%)	87.4	80.1	67.7	65.6	63.7	70.4	83.1	83.7	76.6	74.4	81.1	83.2	

		4Q 00	1Q 01	2Q 01	3Q 01	4Q 01	1Q 02	2Q 02	3Q 02	4Q 02	1Q 03	2Q 03	3Q 03
Foundry Wafers in MOS Total	Capacity	Wafer-starts per week x1000					134.5	154.4	166.0	156.7	145.0	147.6	165.3
		% growth re. preceding quarter						14.8	7.5	-5.6	-7.5	1.8	12.0
		% growth re. one year ago									7.8	-4.4	-0.4
	Actual Wafer-Starts	Wafer-starts per week x1000					84.7	123.3	118.4	96.6	100.2	128.4	143.1
		% growth re. preceding quarter						45.6	-4.0	-18.4	3.7	28.1	11.4
		% growth re. one year ago									18.3	4.1	20.9
Utilisation	in percent (%)					63.0	79.9	71.3	61.6	69.1	87.0	86.6	

		4Q 00	1Q 01	2Q 01	3Q 01	4Q 01	1Q 02	2Q 02	3Q 02	4Q 02	1Q 03	2Q 03	3Q 03	
TOTAL IC's	Capacity	Wafer-starts per week x1000	1282.7	1275.4	1313.9	1324.4	1279.2	1249.6	1256.4	1275.2	1285.1	1249.6	1308.1	1366.6
		% growth re. preceding quarter	4.9	-0.6	3.0	0.8	-3.4	-2.3	0.5	1.5	0.8	-2.8	4.7	4.5
		% growth re. one year ago	26.8	15.1	14.8	8.4	-0.3	-2.0	-4.4	-3.7	0.5	0.0	4.1	7.2
	Actual Wafer-Starts	Wafer-starts per week x1000	1190.2	1069.4	961.9	849.9	842.7	966.0	1092.5	1099.9	1046.8	1034.5	1124.2	1206.4
		% growth re. preceding quarter	1.1	-10.1	-10.1	-11.6	-0.8	14.6	13.1	0.7	-4.8	-1.2	8.7	7.3
		% growth re. one year ago	12.6	2.0	-11.6	-27.8	-29.2	-9.7	13.6	29.4	24.2	7.1	2.9	9.7
Utilisation	in percent (%)	92.8	83.9	73.2	64.2	65.9	77.3	87.0	86.3	81.5	82.8	85.9	88.3	

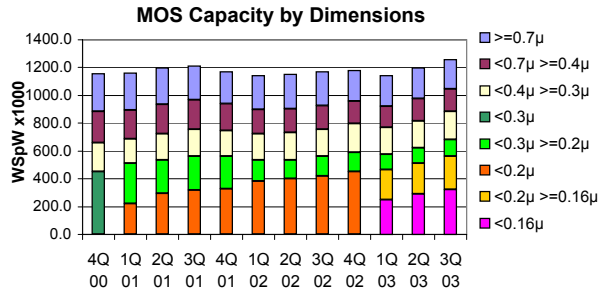
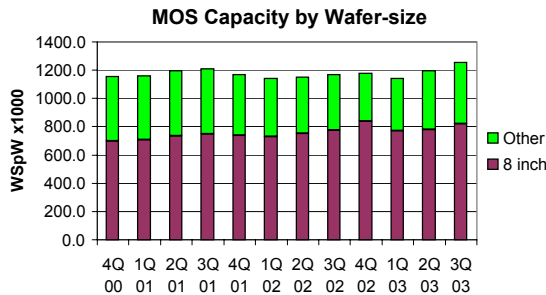
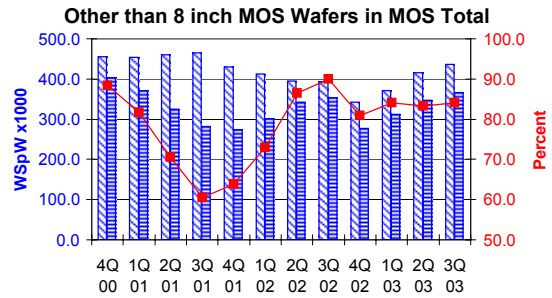
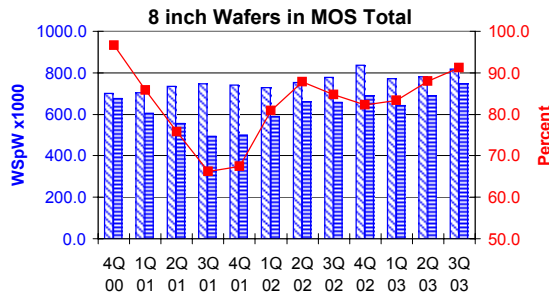
ITALIC numbers reflect revised inputs

These statistics are based on data supplied by merchant IC manufacturers who together represent the great majority of the world's IC production.

All MOS data are expressed in 8 inch equivalent wafers.

WSpW = Wafer-Starts per Week.

Legends:  Capacity WSpW  Actual WSpW  Utilisation of capacity in percent



		4Q 00	1Q 01	2Q 01	3Q 01	4Q 01	1Q 02	2Q 02	3Q 02	4Q 02	1Q 03	2Q 03	3Q 03	
8 inch wafers In MOS Total	Capacity	Wafer-starts per week x1000	699.4	705.0	734.8	745.9	739.9	729.1	754.3	776.8	837.1	771.8	781.2	819.3
		% growth re. preceding quarter	0.8	0.8	4.2	1.5	-0.8	-1.5	3.5	3.0	7.8	-7.8	1.2	4.9
	Actual Wafer-Starts	Wafer-starts per week x1000	676.0	605.0	556.8	493.8	498.7	589.3	662.0	658.4	689.1	643.1	687.5	747.4
		% growth re. preceding quarter	-1.3	-10.5	-8.0	-11.3	1.0	18.2	12.3	-0.5	4.7	-6.7	6.9	8.7
	Utilisation	% growth one year ago	36.6	3.5	-9.0	-27.9	-26.2	-2.6	18.9	33.3	38.2	9.1	3.9	13.5
		in percent (%)	96.7	85.8	75.8	66.2	67.4	80.8	87.8	84.8	82.3	83.3	88.0	91.2

		4Q 00	1Q 01	2Q 01	3Q 01	4Q 01	1Q 02	2Q 02	3Q 02	4Q 02	1Q 03	2Q 03	3Q 03	
Other than 8 inch MOS wafers	Capacity	Wafer-starts per week x 1000	456.0	453.5	460.3	464.5	429.2	413.1	395.7	392.6	342.7	371.8	415.7	436.5
		% growth re. preceding quarter	13.1	-0.5	1.5	0.9	-7.6	-3.8	-4.2	-0.8	-12.7	8.5	11.8	5.0
	Actual Wafer-Starts	Wafer-starts per week x1000	402.9	370.8	324.6	281.3	273.9	301.1	342.1	353.0	277.0	312.5	346.5	366.8
		% growth re. preceding quarter	5.9	-8.0	-12.5	-13.3	-2.6	9.9	13.6	3.2	-21.5	12.8	10.9	5.9
	Utilisation	% growth one year ago	15.8	4.0	-11.1	-26.0	-32.0	-18.8	5.4	25.5	1.1	3.8	1.3	3.9
		in percent (%)	88.4	81.8	70.5	60.6	63.8	72.9	86.5	89.9	80.8	84.1	83.4	84.0

ITALIC numbers reflect revised inputs

These statistics are based on data supplied by merchant IC manufacturers who together represent the great majority of the world's IC production.