

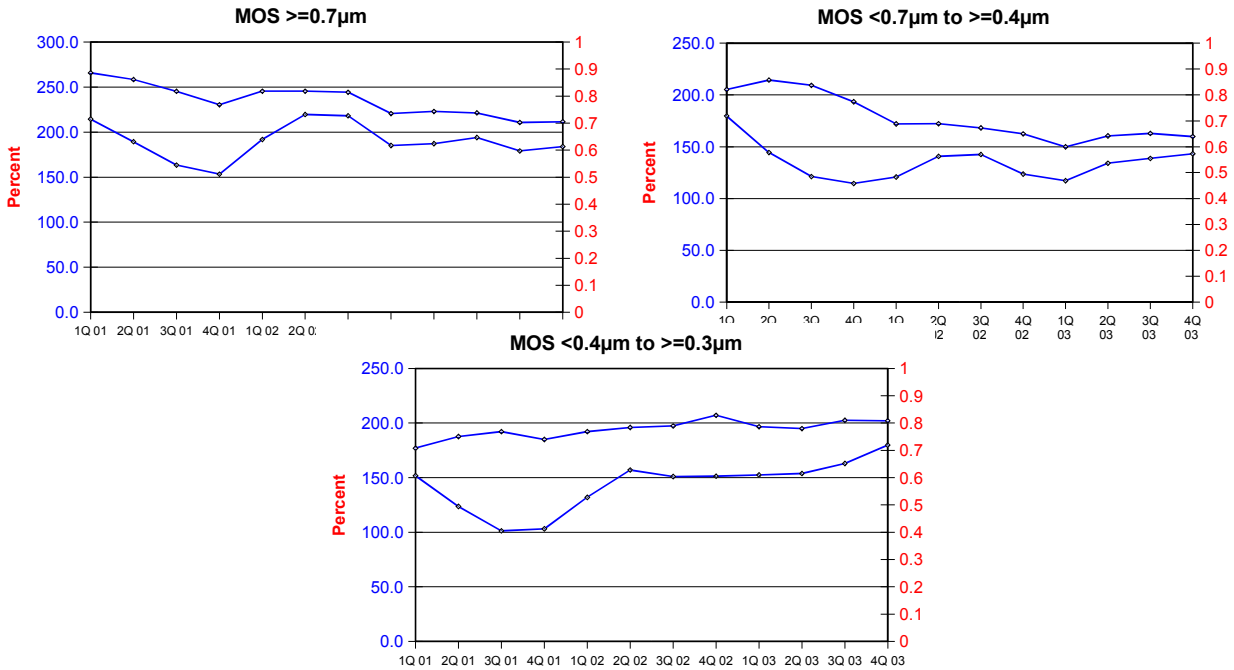


STATISTICS REPORT - 4th QUARTER 2003  
Integrated Circuit Wafer - Fab Capacity and Utilisation

All MOS data are expressed in 8 inch equivalent wafers.

WSpW = Wafer-Starts per Week.

Legends : Capacity WSpW Actual WSpW Utilisation of capacity in percent



|                           |                     | 1Q 01                          | 2Q 01 | 3Q 01 | 4Q 01 | 1Q 02 | 2Q 02 | 3Q 02 | 4Q 02 | 1Q 03 | 2Q 03 | 3Q 03 | 4Q 03 |       |
|---------------------------|---------------------|--------------------------------|-------|-------|-------|-------|-------|-------|-------|-------|-------|-------|-------|-------|
| MOS $\geq 0.7\mu\text{m}$ | Capacity            | Wafer-starts per week x 1000   | 265.7 | 258.3 | 245.2 | 230.3 | 245.4 | 245.4 | 244.2 | 220.6 | 222.9 | 221.3 | 210.7 | 211.5 |
|                           |                     | % growth re. preceding quarter | -1.8  | -2.8  | -5.1  | -6.1  | 6.6   | 0.0   | -0.5  | -9.7  | 1.0   | -0.7  | -4.8  | 0.4   |
|                           |                     | % growth re. one year ago      | -3.1  | -6.5  | -10.2 | -14.9 | -7.6  | -5.0  | -0.4  | -4.2  | -9.2  | -9.8  | -13.7 | -4.1  |
|                           | Actual Wafer-Starts | Wafer-starts per week x 1000   | 214.4 | 189.3 | 163.4 | 153.3 | 191.9 | 219.6 | 218.1 | 185.1 | 187.2 | 194.0 | 179.1 | 183.9 |
|                           |                     | % growth re. preceding quarter | -15.7 | -11.7 | -13.7 | -6.2  | 25.2  | 14.4  | -0.7  | -15.1 | 1.1   | 3.6   | -7.7  | 2.7   |
|                           |                     | % growth re. one year ago      | -16.2 | -27.1 | -37.2 | -39.7 | -10.5 | 16.0  | 33.5  | 20.7  | -2.4  | -11.7 | -17.9 | -0.6  |
| Utilisation               | in percent (%)      | 80.7                           | 73.3  | 66.6  | 66.6  | 78.2  | 89.5  | 89.3  | 83.9  | 84.0  | 87.7  | 85.0  | 87.0  |       |

|   |                     | 1Q 01                          | 2Q 01 | 3Q 01 | 4Q 01 | 1Q 02 | 2Q 02 | 3Q 02 | 4Q 02 | 1Q 03 | 2Q 03 | 3Q 03 | 4Q 03 |       |
|---|---------------------|--------------------------------|-------|-------|-------|-------|-------|-------|-------|-------|-------|-------|-------|-------|
| MOS $< 0.7\mu\text{m}$ to $\geq 0.4\mu\text{m}$ | Capacity            | Wafer-starts per week x1000    | 205.2 | 214.4 | 209.3 | 193.4 | 172.1 | 172.2 | 168.2 | 162.4 | 149.9 | 160.5 | 162.9 | 159.8 |
|   |                     | % growth re. preceding quarter | -8.7  | 4.5   | -2.4  | -7.6  | -11.0 | 0.1   | -2.3  | -3.4  | -7.7  | 7.1   | 1.5   | -1.9  |
|   |                     | % growth re. one year ago      | 1.5   | 4.5   | -1.4  | -13.9 | -16.1 | -19.7 | -19.6 | -16.0 | -12.9 | -6.8  | -3.2  | -1.6  |
|   | Actual Wafer-Starts | Wafer-starts per week x1000    | 179.7 | 144.4 | 121.2 | 114.5 | 120.8 | 140.7 | 142.5 | 123.6 | 117.2 | 134.1 | 138.7 | 143.2 |
|   |                     | % growth re. preceding quarter | -13.9 | -19.6 | -16.1 | -5.5  | 5.5   | 16.5  | 1.3   | -13.3 | -5.2  | 14.4  | 3.4   | 3.2   |
|   |                     | % growth re. one year ago      | -7.0  | 27.4  | -41.7 | -45.1 | -32.8 | -2.6  | 17.6  | 7.9   | -3.0  | -4.7  | -2.7  | 15.9  |
| Utilisation                                     | in percent (%)      | 87.6                           | 67.4  | 57.9  | 59.2  | 70.2  | 81.7  | 84.7  | 76.1  | 78.2  | 83.6  | 85.1  | 89.6  |       |

|   |                     | 1Q 01                          | 2Q 01 | 3Q 01 | 4Q 01 | 1Q 02 | 2Q 02 | 3Q 02 | 4Q 02 | 1Q 03 | 2Q 03 | 3Q 03 | 4Q 03 |       |
|---|---------------------|--------------------------------|-------|-------|-------|-------|-------|-------|-------|-------|-------|-------|-------|-------|
| MOS $< 0.4\mu\text{m}$ to $\geq 0.3\mu\text{m}$ | Capacity            | Wafer-starts per week x1000    | 177.0 | 187.7 | 192.1 | 184.9 | 192.1 | 196.0 | 197.3 | 207.1 | 196.6 | 194.9 | 202.5 | 202.0 |
|   |                     | % growth re. preceding quarter | -14.8 | 6.0   | 2.3   | -3.7  | 3.9   | 2.0   | 0.7   | 5.0   | -5.1  | -0.9  | 3.9   | -0.2  |
|   |                     | % growth re. one year ago      | -4.8  | -1.3  | -6.7  | -11.0 | 8.5   | 4.4   | 2.7   | 12.0  | 2.3   | -0.6  | 2.6   | -2.5  |
|   | Actual Wafer-Starts | Wafer-starts per week x1000    | 151.7 | 123.6 | 101.2 | 103.1 | 132.0 | 157.0 | 151.0 | 151.3 | 152.4 | 153.8 | 162.9 | 179.8 |
|   |                     | % growth re. preceding quarter | -23.3 | -18.5 | -18.1 | 1.9   | 28.0  | 18.9  | -3.8  | 0.2   | 0.7   | 0.9   | 5.9   | 10.4  |
|   |                     | % growth re. one year ago      | -13.3 | -31.6 | -50.0 | -47.9 | -13.0 | 27.0  | 49.2  | 46.8  | 15.5  | -2.0  | 7.9   | 18.8  |
| Utilisation                                     | in percent (%)      | 85.7                           | 65.8  | 52.7  | 55.8  | 68.7  | 80.1  | 76.5  | 73.1  | 77.5  | 78.9  | 80.4  | 89.0  |       |

Yellow coloured cells reflect revised inputs

These statistics are based on data supplied by merchant IC manufacturers who together represent the great majority of the world's IC production.

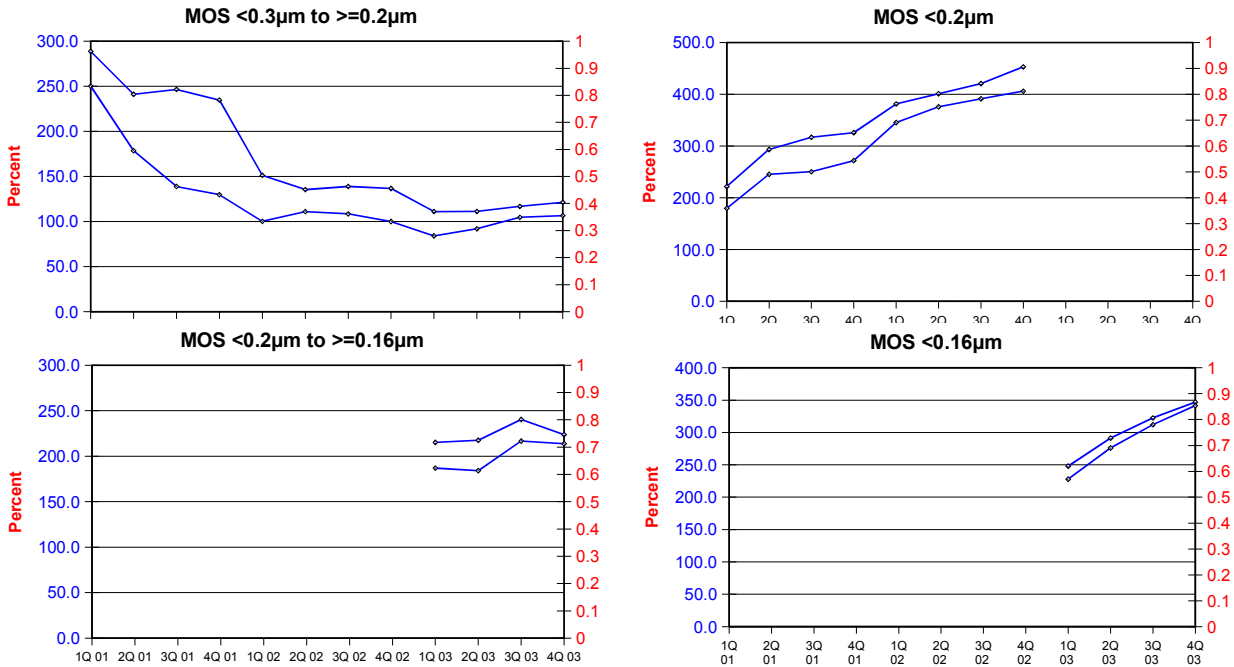


STATISTICS REPORT - 4th QUARTER 2003  
Integrated Circuit Wafer - Fab Capacity and Utilisation

All MOS data are expressed in 8 inch equivalent wafers.

WSpW = Wafer-Starts per Week.

Legends : Capacity WSpW Actual WSpW Utilisation of capacity in percent



|                      |                     | 1Q 01                          | 2Q 01 | 3Q 01 | 4Q 01 | 1Q 02 | 2Q 02 | 3Q 02 | 4Q 02 | 1Q 03 | 2Q 03 | 3Q 03 | 4Q 03 |       |
|----------------------|---------------------|--------------------------------|-------|-------|-------|-------|-------|-------|-------|-------|-------|-------|-------|-------|
| MOS <0.3µm to ≥0.2µm | Capacity            | Wafer-starts per week x 1000   | 288.8 | 241.2 | 246.6 | 234.7 | 151.3 | 135.4 | 138.9 | 136.7 | 111.0 | 111.2 | 116.8 | 121.4 |
|                      |                     | % growth re. preceding quarter |       | -16.5 | 2.2   | -4.8  | -35.5 | -10.5 | 2.6   | -1.6  | -18.8 | 0.2   | 5.0   | 3.9   |
|                      |                     | % growth re. one year ago      |       |       |       |       | -47.6 | -43.9 | -43.7 | -41.8 | -26.6 | -17.9 | -15.9 | -11.2 |
|                      | Actual Wafer-Starts | Wafer-starts per week x 1000   | 250.3 | 178.5 | 138.8 | 129.8 | 100.2 | 111.0 | 108.5 | 100.0 | 84.0  | 92.0  | 104.7 | 106.6 |
|                      |                     | % growth re. preceding quarter |       | -28.7 | -22.2 | -6.5  | -22.8 | 10.8  | -2.3  | -7.8  | -16.0 | 9.5   | 13.8  | 1.8   |
|                      |                     | % growth re. one year ago      |       |       |       |       | -60.0 | -37.8 | -21.8 | -23.0 | -16.2 | -17.1 | -3.5  | 6.6   |
| Utilisation          | in percent (%)      | 86.7                           | 74.0  | 56.3  | 55.3  | 66.2  | 82.0  | 78.1  | 73.2  | 75.7  | 82.7  | 89.6  | 87.8  |       |

|             |                     | 1Q 01                          | 2Q 01 | 3Q 01 | 4Q 01 | 1Q 02 | 2Q 02 | 3Q 02 | 4Q 02 | 1Q 03 | 2Q 03 | 3Q 03 | 4Q 03 |  |
|-------------|---------------------|--------------------------------|-------|-------|-------|-------|-------|-------|-------|-------|-------|-------|-------|--|
| MOS <0.2µm  | Capacity            | Wafer-starts per week x1000    | 221.8 | 293.5 | 317.2 | 325.8 | 381.3 | 401.0 | 420.8 | 453.0 |       |       |       |  |
|             |                     | % growth re. preceding quarter |       | 32.3  | 8.1   | 2.7   | 17.0  | 5.2   | 4.9   | 7.7   |       |       |       |  |
|             |                     | % growth re. one year ago      |       |       |       |       | 71.9  | 36.6  | 32.7  | 39.0  |       |       |       |  |
|             | Actual Wafer-Starts | Wafer-starts per week x1000    | 179.7 | 245.6 | 250.5 | 271.9 | 345.5 | 375.8 | 391.3 | 406.1 |       |       |       |  |
|             |                     | % growth re. preceding quarter |       | 36.7  | 2.0   | 8.5   | 27.1  | 8.8   | 4.1   | 3.8   |       |       |       |  |
|             |                     | % growth re. one year ago      |       |       |       |       | 92.3  | 53.0  | 56.2  | 49.4  |       |       |       |  |
| Utilisation | in percent (%)      | 81.0                           | 83.7  | 79.0  | 83.5  | 90.6  | 93.7  | 93.0  | 89.6  |       |       |       |       |  |

|                       |                     | 1Q 01                          | 2Q 01 | 3Q 01 | 4Q 01 | 1Q 02 | 2Q 02 | 3Q 02 | 4Q 02 | 1Q 03 | 2Q 03 | 3Q 03 | 4Q 03 |       |
|-----------------------|---------------------|--------------------------------|-------|-------|-------|-------|-------|-------|-------|-------|-------|-------|-------|-------|
| MOS <0.2µm to ≥0.16µm | Capacity            | Wafer-starts per week x1000    |       |       |       |       |       |       |       | 215.2 | 217.6 | 240.4 | 223.8 |       |
|                       |                     | % growth re. preceding quarter |       |       |       |       |       |       |       |       | 1.1   | 10.5  | -6.9  |       |
|                       |                     | % growth re. one year ago      |       |       |       |       |       |       |       |       |       |       |       |       |
|                       | Actual Wafer-Starts | Wafer-starts per week x1000    |       |       |       |       |       |       |       |       | 186.9 | 184.1 | 216.7 | 213.7 |
|                       |                     | % growth re. preceding quarter |       |       |       |       |       |       |       |       |       | -1.5  | 17.7  | -1.4  |
|                       |                     | % growth re. one year ago      |       |       |       |       |       |       |       |       |       |       |       |       |
| Utilisation           | in percent (%)      |                                |       |       |       |       |       |       |       | 86.8  | 84.6  | 90.1  | 95.5  |       |

|             |                     | 1Q 01                          | 2Q 01 | 3Q 01 | 4Q 01 | 1Q 02 | 2Q 02 | 3Q 02 | 4Q 02 | 1Q 03 | 2Q 03 | 3Q 03 | 4Q 03 |       |
|-------------|---------------------|--------------------------------|-------|-------|-------|-------|-------|-------|-------|-------|-------|-------|-------|-------|
| MOS <0.16µm | Capacity            | Wafer-starts per week x1000    |       |       |       |       |       |       |       | 248.0 | 291.4 | 322.5 | 346.9 |       |
|             |                     | % growth re. preceding quarter |       |       |       |       |       |       |       |       | 17.5  | 10.7  | 7.6   |       |
|             |                     | % growth re. one year ago      |       |       |       |       |       |       |       |       |       |       |       |       |
|             | Actual Wafer-Starts | Wafer-starts per week x1000    |       |       |       |       |       |       |       |       | 227.9 | 276.0 | 312.1 | 341.5 |
|             |                     | % growth re. preceding quarter |       |       |       |       |       |       |       |       |       | 21.1  | 13.1  | 9.4   |
|             |                     | % growth re. one year ago      |       |       |       |       |       |       |       |       |       |       |       |       |
| Utilisation | in percent (%)      |                                |       |       |       |       |       |       |       | 91.9  | 94.7  | 96.8  | 98.4  |       |

Yellow coloured cells reflect revised inputs

These statistics are based on data supplied by merchant IC manufacturers who together represent the great majority of the world's IC production.

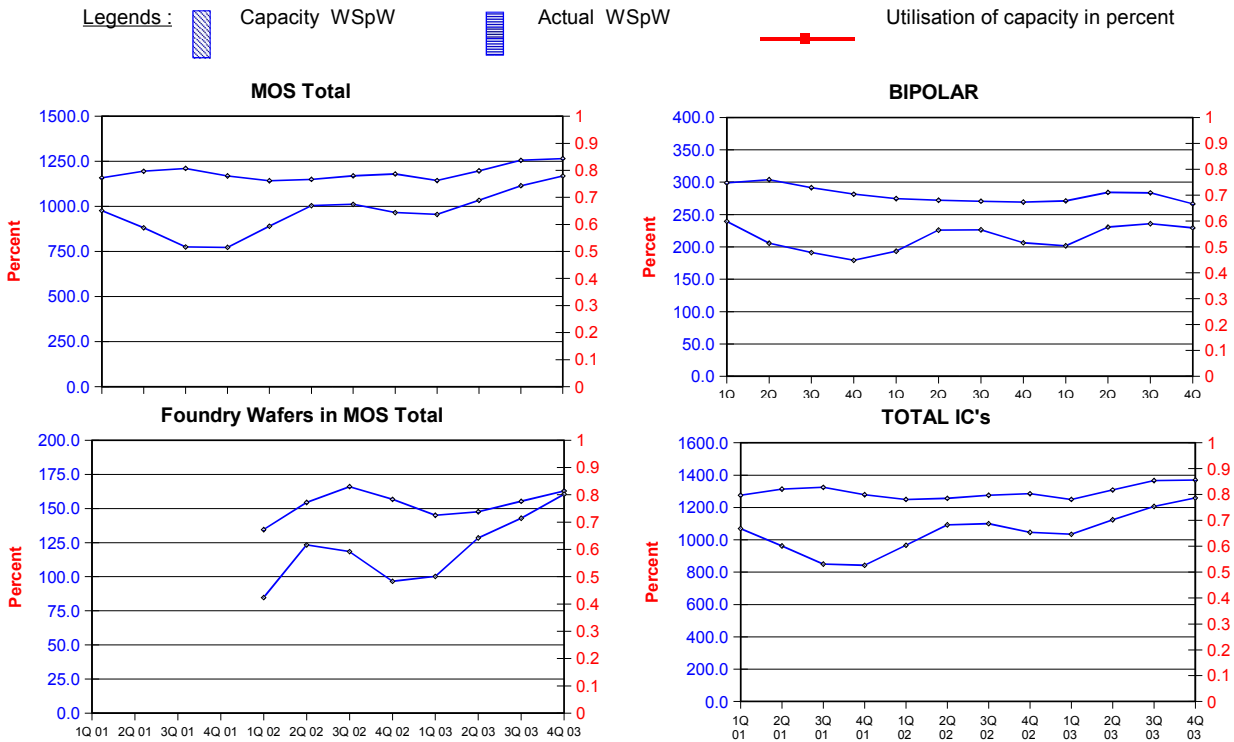


**STATISTICS REPORT - 4th QUARTER 2003**  
**Integrated Circuit Wafer - Fab Capacity and Utilisation**

All MOS data are expressed in 8 inch equivalent wafers. Bipolar data are expressed in 5 inch equivalent wafers.

"Total IC's" include Bipolar data, which were converted for this purpose from 5 inch to 8 inch equivalent wafers by the factor 0.391.

WSpW = Wafer-Starts per Week.



|             |                     | 1Q 01                          | 2Q 01  | 3Q 01  | 4Q 01  | 1Q 02  | 2Q 02  | 3Q 02  | 4Q 02  | 1Q 03  | 2Q 03  | 3Q 03  | 4Q 03  |        |
|-------------|---------------------|--------------------------------|--------|--------|--------|--------|--------|--------|--------|--------|--------|--------|--------|--------|
| MOS Total   | Capacity            | Wafer-starts per week x 1000   | 1158.5 | 1195.1 | 1210.4 | 1169.1 | 1142.2 | 1150.0 | 1169.4 | 1179.8 | 1143.6 | 1196.9 | 1255.8 | 1265.4 |
|             |                     | % growth re. preceding quarter | 0.3    | 3.2    | 1.3    | -3.4   | -2.3   | 0.7    | 1.7    | 0.9    | -3.1   | 4.7    | 4.9    | 0.8    |
|             |                     | % growth re. one year ago      | 17.3   | 16.9   | 10.3   | 1.2    | -1.4   | -3.8   | -3.4   | 0.9    | 0.1    | 4.1    | 7.4    | 7.3    |
|             | Actual Wafer-Starts | Wafer-starts per week x 1000   | 975.8  | 881.4  | 775.1  | 772.6  | 890.4  | 1004.1 | 1011.4 | 966.1  | 955.6  | 1034.0 | 1114.2 | 1168.7 |
|             |                     | % growth re. preceding quarter | -9.6   | -9.7   | -12.1  | -0.3   | 15.2   | 12.8   | 0.7    | -4.5   | -1.1   | 8.2    | 7.8    | 4.9    |
|             |                     | % growth re. one year ago      | 3.7    | -9.7   | -27.2  | -28.4  | -8.8   | 13.9   | 30.5   | 25.0   | 7.3    | 3.0    | 10.2   | 21.0   |
| Utilisation | in percent (%)      | 84.2                           | 73.8   | 64.0   | 66.1   | 78.0   | 87.3   | 86.5   | 81.9   | 83.6   | 86.4   | 88.7   | 92.4   |        |

|                          |                     | 1Q 01                          | 2Q 01 | 3Q 01 | 4Q 01 | 1Q 02 | 2Q 02 | 3Q 02 | 4Q 02 | 1Q 03 | 2Q 03 | 3Q 03 | 4Q 03 |       |
|--------------------------|---------------------|--------------------------------|-------|-------|-------|-------|-------|-------|-------|-------|-------|-------|-------|-------|
| BIPOLAR (5 inch equivs.) | Capacity            | Wafer-starts per week x1000    | 298.9 | 303.9 | 291.6 | 281.5 | 274.6 | 272.2 | 270.6 | 269.4 | 271.1 | 284.3 | 283.5 | 266.6 |
|                          |                     | % growth re. preceding quarter | -8.2  | 1.7   | -4.0  | -3.5  | -2.5  | -0.9  | -0.6  | -0.4  | 0.6   | 4.9   | -0.3  | -6.0  |
|                          |                     | % growth re. one year ago      | -3.0  | -3.1  | -9.0  | -13.5 | -8.1  | -10.4 | -7.2  | -4.3  | -1.3  | 4.4   | 4.8   | -1.0  |
|                          | Actual Wafer-Starts | Wafer-starts per week x1000    | 239.5 | 205.8 | 191.2 | 179.3 | 193.4 | 226.1 | 226.4 | 206.4 | 201.7 | 230.7 | 235.8 | 229.5 |
|                          |                     | % growth re. preceding quarter | -15.9 | -14.1 | -7.1  | -6.2  | 7.9   | 16.9  | 0.1   | -8.8  | -2.3  | 14.4  | 2.2   | -2.7  |
|                          |                     | % growth re. one year ago      | -13.0 | -27.6 | -33.7 | -37.0 | -19.2 | 9.9   | 18.4  | 15.1  | 4.3   | 2.0   | 4.2   | 11.2  |
| Utilisation              | in percent (%)      | 80.1                           | 67.7  | 65.6  | 63.7  | 70.4  | 83.1  | 83.7  | 76.6  | 74.4  | 81.1  | 83.2  | 86.1  |       |

|                             |                     | 1Q 01                          | 2Q 01 | 3Q 01 | 4Q 01 | 1Q 02 | 2Q 02 | 3Q 02 | 4Q 02 | 1Q 03 | 2Q 03 | 3Q 03 | 4Q 03 |       |
|-----------------------------|---------------------|--------------------------------|-------|-------|-------|-------|-------|-------|-------|-------|-------|-------|-------|-------|
| Foundry Wafers in MOS Total | Capacity            | Wafer-starts per week x1000    |       |       |       | 134.5 | 154.4 | 166.0 | 156.7 | 145.0 | 147.6 | 155.3 | 162.8 |       |
|                             |                     | % growth re. preceding quarter |       |       |       |       |       | 14.8  | 7.5   | -5.6  | -7.5  | 1.8   | 5.2   | 4.8   |
|                             |                     | % growth re. one year ago      |       |       |       |       |       |       |       |       | 7.8   | -4.4  | -6.4  | 3.9   |
|                             | Actual Wafer-Starts | Wafer-starts per week x1000    |       |       |       |       | 84.7  | 123.3 | 118.4 | 96.6  | 100.2 | 128.4 | 142.9 | 160.5 |
|                             |                     | % growth re. preceding quarter |       |       |       |       |       | 45.6  | -4.0  | -18.4 | 3.7   | 28.1  | 11.3  | 12.3  |
|                             |                     | % growth re. one year ago      |       |       |       |       |       |       |       |       | 18.3  | 4.1   | 20.7  | 66.1  |
| Utilisation                 | in percent (%)      |                                |       |       |       | 63.0  | 79.9  | 71.3  | 61.6  | 69.1  | 87.0  | 92.0  | 98.6  |       |

|             |                     | 1Q 01                          | 2Q 01  | 3Q 01  | 4Q 01  | 1Q 02  | 2Q 02  | 3Q 02  | 4Q 02  | 1Q 03  | 2Q 03  | 3Q 03  | 4Q 03  |        |
|-------------|---------------------|--------------------------------|--------|--------|--------|--------|--------|--------|--------|--------|--------|--------|--------|--------|
| TOTAL IC's  | Capacity            | Wafer-starts per week x1000    | 1275.4 | 1313.9 | 1324.4 | 1279.2 | 1249.6 | 1256.4 | 1275.2 | 1285.1 | 1249.6 | 1308.1 | 1366.6 | 1369.6 |
|             |                     | % growth re. preceding quarter | -0.6   | 3.0    | 0.8    | -3.4   | -2.3   | 0.5    | 1.5    | 0.8    | -2.8   | 4.7    | 4.5    | 0.2    |
|             |                     | % growth re. one year ago      | 15.1   | 14.8   | 8.4    | -0.3   | -2.0   | -4.4   | -3.7   | 0.5    | 0.0    | 4.1    | 7.2    | 6.6    |
|             | Actual Wafer-Starts | Wafer-starts per week x1000    | 1069.4 | 961.9  | 849.9  | 842.7  | 966.0  | 1092.5 | 1099.9 | 1046.8 | 1034.5 | 1124.2 | 1206.4 | 1258.4 |
|             |                     | % growth re. preceding quarter | -10.1  | -10.1  | -11.6  | -0.8   | 14.6   | 13.1   | 0.7    | -4.8   | -1.2   | 8.7    | 7.3    | 4.3    |
|             |                     | % growth re. one year ago      | 2.0    | -11.6  | -27.8  | -29.2  | -9.7   | 13.6   | 29.4   | 24.2   | 7.1    | 2.9    | 9.7    | 20.2   |
| Utilisation | in percent (%)      | 83.9                           | 73.2   | 64.2   | 65.9   | 77.3   | 87.0   | 86.3   | 81.5   | 82.8   | 85.9   | 88.3   | 91.9   |        |

Yellow coloured cells reflect revised inputs

These statistics are based on data supplied by merchant IC manufacturers who together represent the great majority of the world's IC production.

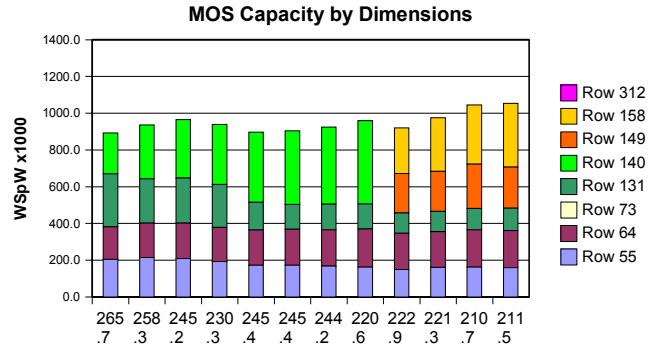
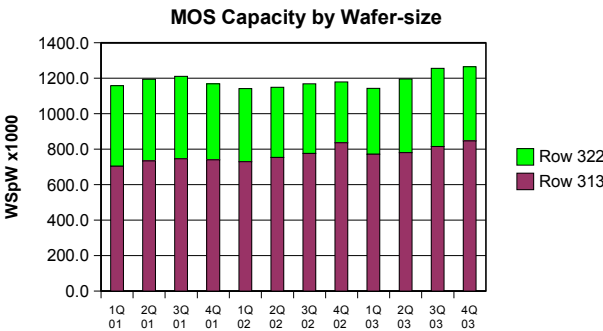
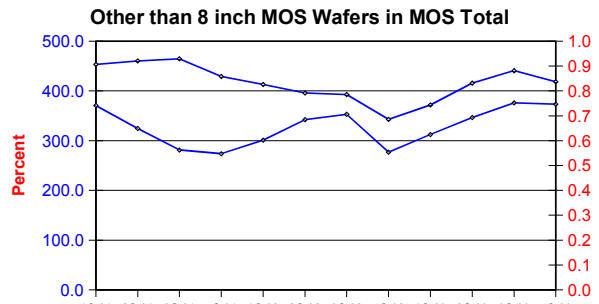
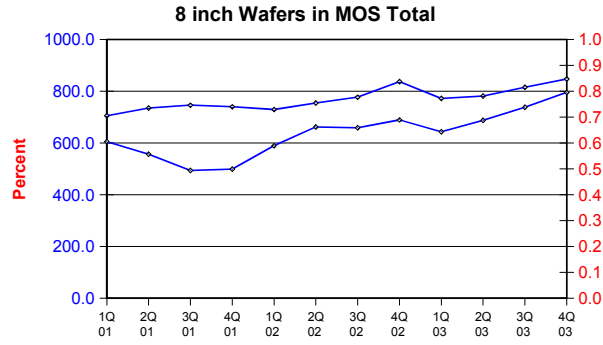


STATISTICS REPORT 4th QUARTER 2003  
Integrated Circuit Wafer - Fab Capacity and Utilisation

All MOS data are expressed in 8 inch equivalent wafers.

WSpW = Wafer-Starts per Week.

Legends: Capacity WSpW (light blue hatched bar), Actual WSpW (dark blue hatched bar), Utilisation of capacity in percent (red line with square marker)



|                            |                     | 1Q 01                          | 2Q 01 | 3Q 01 | 4Q 01 | 1Q 02 | 2Q 02 | 3Q 02 | 4Q 02 | 1Q 03 | 2Q 03 | 3Q 03 | 4Q 03 |       |
|----------------------------|---------------------|--------------------------------|-------|-------|-------|-------|-------|-------|-------|-------|-------|-------|-------|-------|
| 8 inch wafers in MOS Total | Capacity            | Wafer-starts per week x1000    | 705.0 | 734.8 | 745.9 | 739.9 | 729.1 | 754.3 | 776.8 | 837.1 | 771.8 | 781.2 | 815.1 | 847.1 |
|                            |                     | % growth re. preceding quarter | 0.8   | 4.2   | 1.5   | -0.8  | -1.5  | 3.5   | 3.0   | 7.8   | -7.8  | 1.2   | 4.3   | 3.9   |
|                            |                     | % growth one year ago          | 17.4  | 18.1  | 7.5   | 5.8   | 3.4   | 2.7   | 4.1   | 13.1  | 5.9   | 3.6   | 4.9   | 1.2   |
|                            | Actual Wafer-Starts | Wafer-starts per week x1000    | 605.0 | 556.8 | 493.8 | 498.7 | 589.3 | 662.0 | 658.4 | 689.1 | 643.1 | 687.5 | 738.1 | 795.2 |
|                            |                     | % growth re. preceding quarter | -10.5 | -8.0  | -11.3 | 1.0   | 18.2  | 12.3  | -0.5  | 4.7   | -6.7  | 6.9   | 7.4   | 7.7   |
|                            |                     | % growth one year ago          | 3.5   | -9.0  | -27.9 | -26.2 | -2.6  | 18.9  | 33.3  | 38.2  | 9.1   | 3.9   | 12.1  | 15.4  |
|                            | Utilisation         | in percent (%)                 | 85.8  | 75.8  | 66.2  | 67.4  | 80.8  | 87.8  | 84.8  | 82.3  | 83.3  | 88.0  | 90.6  | 93.9  |

|                              |                     | 1Q 01                          | 2Q 01 | 3Q 01 | 4Q 01 | 1Q 02 | 2Q 02 | 3Q 02 | 4Q 02 | 1Q 03 | 2Q 03 | 3Q 03 | 4Q 03 |       |
|------------------------------|---------------------|--------------------------------|-------|-------|-------|-------|-------|-------|-------|-------|-------|-------|-------|-------|
| Other than 8 inch MOS wafers | Capacity            | Wafer-starts per week x 1000   | 453.5 | 460.3 | 464.5 | 429.2 | 413.1 | 395.7 | 392.6 | 342.7 | 371.8 | 415.7 | 440.7 | 418.3 |
|                              |                     | % growth re. preceding quarter | -0.5  | 1.5   | 0.9   | -7.6  | -3.8  | -4.2  | -0.8  | -12.7 | 8.5   | 11.8  | 6.0   | -5.1  |
|                              |                     | % growth one year ago          | 16.9  | 15.0  | 15.2  | -5.9  | -8.9  | -14.0 | -15.5 | -20.2 | -10.0 | 5.1   | 12.3  | 22.1  |
|                              | Actual Wafer-Starts | Wafer-starts per week x1000    | 370.8 | 324.6 | 281.3 | 273.9 | 301.1 | 342.1 | 353.0 | 277.0 | 312.5 | 346.5 | 376.1 | 373.5 |
|                              |                     | % growth re. preceding quarter | -8.0  | -12.5 | -13.3 | -2.6  | 9.9   | 13.6  | 3.2   | -21.5 | 12.8  | 10.9  | 8.5   | -0.7  |
|                              |                     | % growth one year ago          | 4.0   | -11.1 | -26.0 | -32.0 | -18.8 | 5.4   | 25.5  | 1.1   | 3.8   | 1.3   | 6.5   | 34.8  |
|                              | Utilisation         | in percent (%)                 | 81.8  | 70.5  | 60.6  | 63.8  | 72.9  | 86.5  | 89.9  | 80.8  | 84.1  | 83.4  | 85.3  | 89.3  |

Yellow coloured cells reflect revised inputs

These statistics are based on data supplied by merchant IC manufacturers who together represent the great majority of the world's IC production.