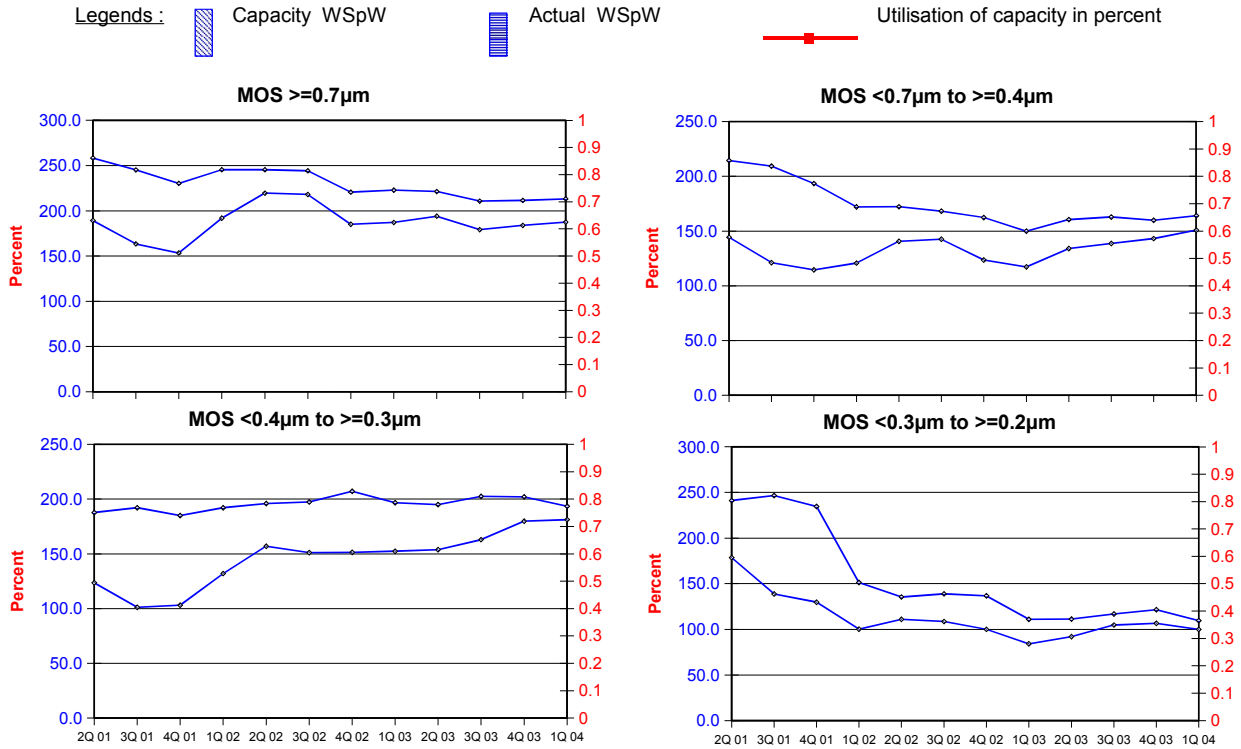




STATISTICS REPORT - 1st QUARTER 2004
Integrated Circuit Wafer - Fab Capacity and Utilisation (revised June 4, 2004)

All MOS data are expressed in 8 inch equivalent wafers.

WSpW = Wafer-Starts per Week.



		2Q 01	3Q 01	4Q 01	1Q 02	2Q 02	3Q 02	4Q 02	1Q 03	2Q 03	3Q 03	4Q 03	1Q 04
MOS $\geq 0.7\mu\text{m}$	Capacity	Wafer-starts per week x 1000	258.3	245.2	230.3	245.4	245.4	244.2	220.6	222.9	221.3	210.7	211.5
		% growth re. preceding quarter	-2.8	-5.1	-6.1	6.6	0.0	-0.5	-9.7	1.0	-0.7	-4.8	0.8
		% growth re. one year ago	-6.5	-10.2	-14.9	-7.6	-5.0	-0.4	-4.2	-9.2	-9.8	-13.7	-4.1
	Actual Wafer-Starts	Wafer-starts per week x 1000	189.3	163.4	153.3	191.9	219.6	218.1	185.1	187.2	194.0	179.1	183.9
		% growth re. preceding quarter	-11.7	-13.7	-6.2	25.2	14.4	-0.7	-15.1	1.1	3.6	-7.7	2.7
		% growth re. one year ago	-27.1	-37.2	-39.7	-10.5	16.0	33.5	20.7	-2.4	-11.7	-17.9	-0.6
Utilisation	in percent (%)	73.3	66.6	66.6	78.2	89.5	89.3	83.9	84.0	87.7	85.0	87.0	

		2Q 01	3Q 01	4Q 01	1Q 02	2Q 02	3Q 02	4Q 02	1Q 03	2Q 03	3Q 03	4Q 03	1Q 04
MOS $< 0.7\mu\text{m}$ to $\geq 0.4\mu\text{m}$	Capacity	Wafer-starts per week x1000	214.4	209.3	193.4	172.1	172.2	168.2	162.4	149.9	160.5	162.9	159.8
		% growth re. preceding quarter	4.5	-2.4	-7.6	-11.0	0.1	-2.3	-3.4	-7.7	7.1	1.5	-1.9
		% growth re. one year ago	4.5	-1.4	-13.9	-16.1	-19.7	-19.6	-16.0	-12.9	-6.8	-3.2	-1.6
	Actual Wafer-Starts	Wafer-starts per week x1000	144.4	121.2	114.5	120.8	140.7	142.5	123.6	117.2	134.1	138.7	143.2
		% growth re. preceding quarter	-19.6	-16.1	-5.5	5.5	16.5	1.3	-13.3	-5.2	14.4	3.4	3.2
		% growth re. one year ago	27.4	-41.7	-45.1	-32.8	-2.6	17.6	7.9	-3.0	-4.7	-2.7	15.9
Utilisation	in percent (%)	67.4	57.9	59.2	70.2	81.7	84.7	76.1	78.2	83.6	85.1	89.6	

		2Q 01	3Q 01	4Q 01	1Q 02	2Q 02	3Q 02	4Q 02	1Q 03	2Q 03	3Q 03	4Q 03	1Q 04
MOS $< 0.4\mu\text{m}$ to $\geq 0.3\mu\text{m}$	Capacity	Wafer-starts per week x1000	187.7	192.1	184.9	192.1	196.0	197.3	207.1	196.6	194.9	202.5	202.0
		% growth re. preceding quarter	6.0	2.3	-3.7	3.9	2.0	0.7	5.0	-5.1	-0.9	3.9	-0.2
		% growth re. one year ago	-1.3	-6.7	-11.0	8.5	4.4	2.7	12.0	2.3	-0.6	2.6	-2.5
	Actual Wafer-Starts	Wafer-starts per week x1000	123.6	101.2	103.1	132.0	157.0	151.0	151.3	152.4	153.8	162.9	179.8
		% growth re. preceding quarter	-18.5	-18.1	1.9	28.0	18.9	-3.8	0.2	0.7	0.9	5.9	10.4
		% growth re. one year ago	-31.6	-50.0	-47.9	-13.0	27.0	49.2	46.8	15.5	-2.0	7.9	18.8
Utilisation	in percent (%)	65.8	52.7	55.8	68.7	80.1	76.5	73.1	77.5	78.9	80.4	89.0	

		2Q 01	3Q 01	4Q 01	1Q 02	2Q 02	3Q 02	4Q 02	1Q 03	2Q 03	3Q 03	4Q 03	1Q 04
MOS $< 0.3\mu\text{m}$ to $\geq 0.2\mu\text{m}$	Capacity	Wafer-starts per week x 1000	241.2	246.6	234.7	151.3	135.4	138.9	136.7	111.0	111.2	116.8	121.4
		% growth re. preceding quarter	-16.5	2.2	-4.8	-35.5	-10.5	2.6	-1.6	-18.8	0.2	5.0	3.9
		% growth re. one year ago				-47.6	-43.9	-43.7	-41.8	-26.6	-17.9	-15.9	-11.2
	Actual Wafer-Starts	Wafer-starts per week x 1000	178.5	138.8	129.8	100.2	111.0	108.5	100.0	84.0	92.0	104.7	106.6
		% growth re. preceding quarter	-28.7	-22.2	-6.5	-22.8	10.8	-2.3	-7.8	-16.0	9.5	13.8	1.8
		% growth re. one year ago				-60.0	-37.8	-21.8	-23.0	-16.2	-17.1	-3.5	6.6
Utilisation	in percent (%)	74.0	56.3	55.3	66.2	82.0	78.1	73.2	75.7	82.7	89.6	87.8	

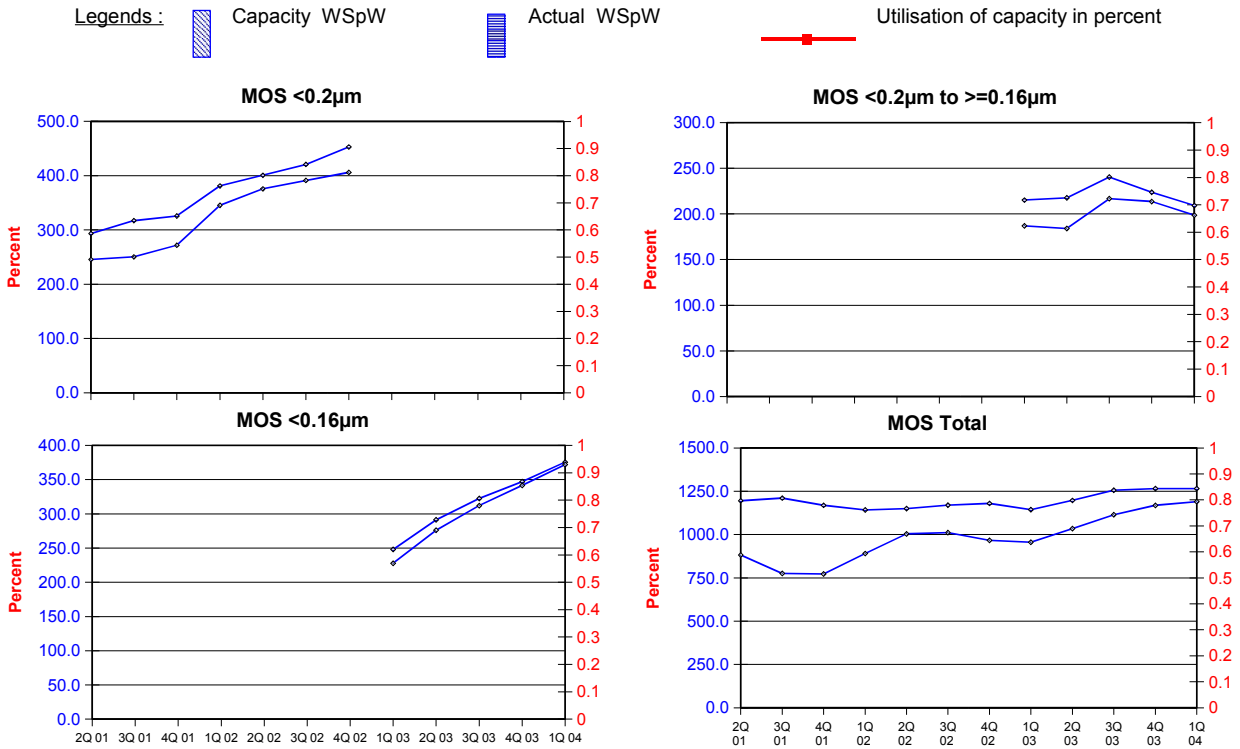
ITALIC numbers reflect revised inputs

These statistics are based on data supplied by merchant IC manufacturers who together represent the great majority of the world's IC production.



All MOS data are expressed in 8 inch equivalent wafers.

WSpW = Wafer-Starts per Week.



			2Q 01	3Q 01	4Q 01	1Q 02	2Q 02	3Q 02	4Q 02	1Q 03	2Q 03	3Q 03	4Q 03	1Q 04
MOS <0.2µm	Capacity	Wafer-starts per week x1000	293.5	317.2	325.8	381.3	401.0	420.8	453.0					
		% growth re. preceding quarter	32.3	8.1	2.7	17.0	5.2	4.9	7.7					
		% growth re. one year ago				71.9	36.6	32.7	39.0					
	Actual Wafer-Starts	Wafer-starts per week x1000	245.6	250.5	271.9	345.5	375.8	391.3	406.1					
		% growth re. preceding quarter	36.7	2.0	8.5	27.1	8.8	4.1	3.8					
		% growth re. one year ago				92.3	53.0	56.2	49.4					
Utilisation	in percent (%)	83.7	79.0	83.5	90.6	93.7	93.0	89.6						

			2Q 01	3Q 01	4Q 01	1Q 02	2Q 02	3Q 02	4Q 02	1Q 03	2Q 03	3Q 03	4Q 03	1Q 04	
MOS <0.2µm to >=0.16µm	Capacity	Wafer-starts per week x1000								215.2	217.6	240.4	223.8	209.3	
		% growth re. preceding quarter									1.1	10.5	-6.9	-6.5	
		% growth re. one year ago												-2.7	
	Actual Wafer-Starts	Wafer-starts per week x1000									186.9	184.1	216.7	213.7	198.6
		% growth re. preceding quarter										-1.5	17.7	-1.4	-7.1
		% growth re. one year ago													6.3
Utilisation	in percent (%)									86.8	84.6	90.1	95.5	94.9	

			2Q 01	3Q 01	4Q 01	1Q 02	2Q 02	3Q 02	4Q 02	1Q 03	2Q 03	3Q 03	4Q 03	1Q 04	
MOS <0.16µm	Capacity	Wafer-starts per week x1000								248.0	291.4	322.5	346.9	375.7	
		% growth re. preceding quarter									17.5	10.7	7.6	8.3	
		% growth re. one year ago												51.5	
	Actual Wafer-Starts	Wafer-starts per week x1000									227.9	276.0	312.1	341.5	372.0
		% growth re. preceding quarter										21.1	13.1	9.4	8.9
		% growth re. one year ago													63.2
Utilisation	in percent (%)									91.9	94.7	96.8	98.4	99.0	

			1195.1	1210.4	1169.1	1142.2	1150.0	1169.4	1179.8	1143.6	1196.9	1255.8	1265.4	1265.3
MOS Total	Capacity	Wafer-starts per week x 1000	1195.1	1210.4	1169.1	1142.2	1150.0	1169.4	1179.8	1143.6	1196.9	1255.8	1265.4	1265.3
		% growth re. preceding quarter	3.2	1.3	-3.4	-2.3	0.7	1.7	0.9	-3.1	4.7	4.9	0.8	0.0
		% growth re. one year ago	16.9	10.3	1.2	-1.4	-3.8	-3.4	0.9	0.1	4.1	7.4	7.3	10.6
	Actual Wafer-Starts	Wafer-starts per week x 1000	881.4	775.1	772.6	890.4	1004.1	1011.4	966.1	955.6	1034.0	1114.2	1168.7	1190.0
		% growth re. preceding quarter	-9.7	-12.1	-0.3	15.2	12.8	0.7	-4.5	-1.1	8.2	7.8	4.9	1.8
		% growth re. one year ago	-9.7	-27.2	-28.4	-8.8	13.9	30.5	25.0	7.3	3.0	10.2	21.0	24.5
Utilisation	in percent (%)	73.8	64.0	66.1	78.0	87.3	86.5	81.9	83.6	86.4	88.7	92.4	94.0	

ITALIC numbers reflect revised inputs

These statistics are based on data supplied by merchant IC manufacturers who together represent the great majority of the world's IC production.



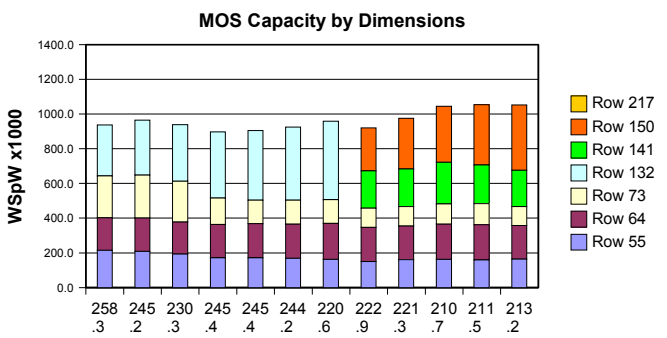
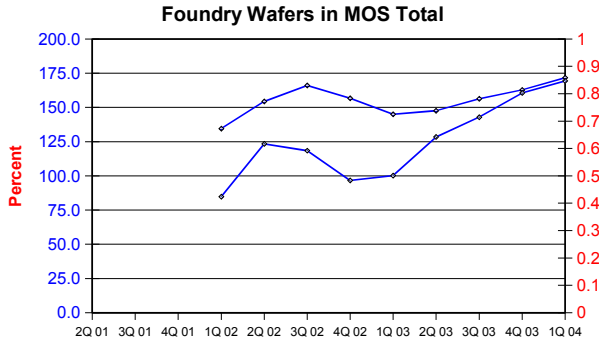
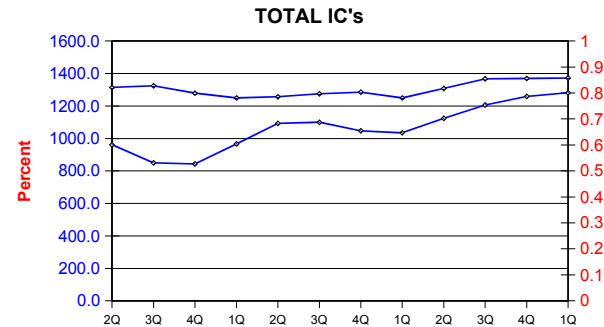
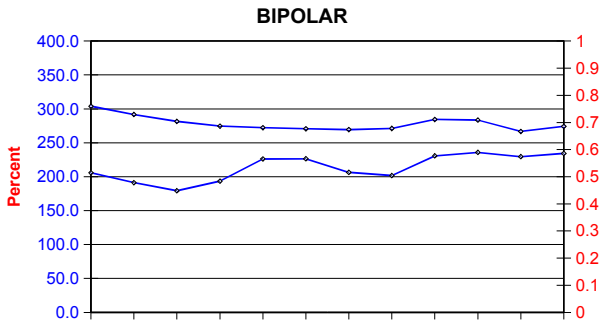
STATISTICS REPORT - 1st QUARTER 2004
Integrated Circuit Wafer - Fab Capacity and Utilisation (revised June 4, 2004)

All MOS data are expressed in 8 inch equivalent wafers. Bipolar data are expressed in 5 inch equivalent wafers.

"Total IC's" include Bipolar data, which were converted for this purpose from 5 inch to 8 inch equivalent wafers by the factor 0.391.

WSpW = Wafer-Starts per Week.

Legends : Capacity WSpW Actual WSpW Utilisation of capacity in percent



		2Q 01	3Q 01	4Q 01	1Q 02	2Q 02	3Q 02	4Q 02	1Q 03	2Q 03	3Q 03	4Q 03	1Q 04	
BIPOLAR (5 inch equivs.)	Capacity	Wafer-starts per week x1000	303.9	291.6	281.5	274.6	272.2	270.6	269.4	271.1	284.3	283.5	266.6	274.2
		% growth re. preceding quarter	1.7	-4.0	-3.5	-2.5	-0.9	-0.6	-0.4	0.6	4.9	-0.3	-6.0	2.9
		% growth re. one year ago	-3.1	-9.0	-13.5	-8.1	-10.4	-7.2	-4.3	-1.3	4.4	4.8	-1.0	1.1
	Actual Wafer-Starts	Wafer-starts per week x1000	205.8	191.2	179.3	193.4	226.1	226.4	206.4	201.7	230.7	235.8	229.5	234.3
		% growth re. preceding quarter	-14.1	-7.1	-6.2	7.9	16.9	0.1	-8.8	-2.3	14.4	2.2	-2.7	2.1
		% growth re. one year ago	-27.6	-33.7	-37.0	-19.2	9.9	18.4	15.1	4.3	2.0	4.2	11.2	16.2
Utilisation	in percent (%)	67.7	65.6	63.7	70.4	83.1	83.7	76.6	74.4	81.1	83.2	86.1	85.4	

		2Q 01	3Q 01	4Q 01	1Q 02	2Q 02	3Q 02	4Q 02	1Q 03	2Q 03	3Q 03	4Q 03	1Q 04	
TOTAL IC's	Capacity	Wafer-starts per week x1000	1313.9	1324.4	1279.2	1249.6	1256.4	1275.2	1285.1	1249.6	1308.1	1366.6	1369.6	1372.5
		% growth re. preceding quarter	3.0	0.8	-3.4	-2.3	0.5	1.5	0.8	-2.8	4.7	4.5	0.2	0.2
		% growth re. one year ago	14.8	8.4	-0.3	-2.0	-4.4	-3.7	0.5	0.0	4.1	7.2	6.6	9.8
	Actual Wafer-Starts	Wafer-starts per week x1000	961.9	849.9	842.7	966.0	1092.5	1099.9	1046.8	1034.5	1124.2	1206.4	1258.4	1281.6
		% growth re. preceding quarter	-10.1	-11.6	-0.8	14.6	13.1	0.7	-4.8	-1.2	8.7	7.3	4.3	1.8
		% growth re. one year ago	-11.6	-27.8	-29.2	-9.7	13.6	29.4	24.2	7.1	2.9	9.7	20.2	23.9
Utilisation	in percent (%)	73.2	64.2	65.9	77.3	87.0	86.3	81.5	82.8	85.9	88.3	91.9	93.4	

		2Q 01	3Q 01	4Q 01	1Q 02	2Q 02	3Q 02	4Q 02	1Q 03	2Q 03	3Q 03	4Q 03	1Q 04	
Foundry Wafers in MOS Total	Capacity	Wafer-starts per week x1000				134.5	154.4	166.0	156.7	145.0	147.6	156.3	162.8	171.6
		% growth re. preceding quarter					14.8	7.5	-5.6	-7.5	1.8	5.9	4.2	5.4
		% growth re. one year ago								7.8	-4.4	-5.8	3.9	18.3
	Actual Wafer-Starts	Wafer-starts per week x1000				84.7	123.3	118.4	96.6	100.2	128.4	142.9	160.5	169.4
		% growth re. preceding quarter					45.6	-4.0	-18.4	3.7	28.1	11.3	12.3	5.5
		% growth re. one year ago								18.3	4.1	20.7	66.1	69.1
Utilisation	in percent (%)				63.0	79.9	71.3	61.6	69.1	87.0	91.4	98.6	98.7	

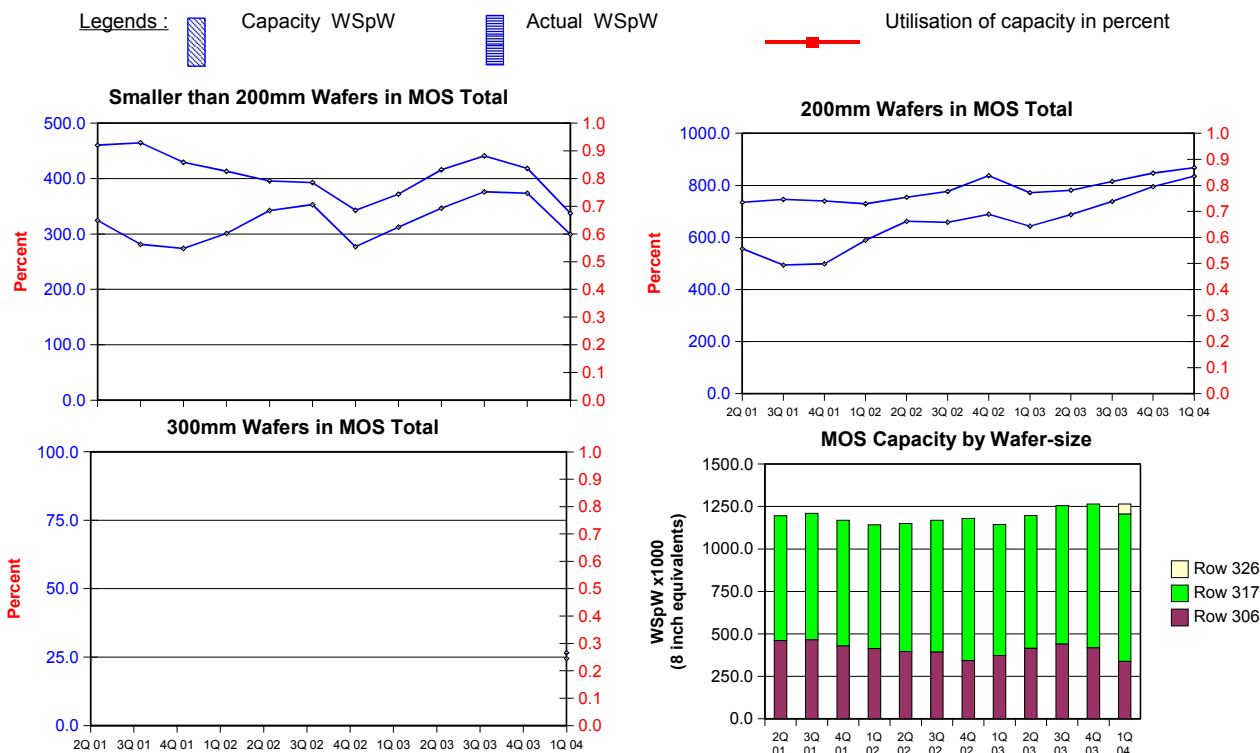
ITALIC numbers reflect revised inputs

These statistics are based on data supplied by merchant IC manufacturers who together represent the great majority of the world's IC production.



All MOS data are expressed in 8 inch equivalent wafers, except for the 300mm wafer data where annotated as "numbers of wafers".

WSpW = Wafer-Starts per Week.



		2Q 01	3Q 01	4Q 01	1Q 02	2Q 02	3Q 02	4Q 02	1Q 03	2Q 03	3Q 03	4Q 03	1Q 04	
< 200mm Wafers in MOS Total	Capacity	Wafer-starts per week x 1000	460.3	464.5	429.2	413.1	395.7	392.6	342.7	371.8	415.7	440.7	418.3	337.4
		% growth re. preceding quarter	1.5	0.9	-7.6	-3.8	-4.2	-0.8	-12.7	8.5	11.8	6.0	-5.1	n.a.
		% growth re. one year ago	15.0	15.2	-5.9	-8.9	-14.0	-15.5	-20.2	-10.0	5.1	12.3	22.1	n.a.
	Actual Wafer-Starts	Wafer-starts per week x1000	324.6	281.3	273.9	301.1	342.1	353.0	277.0	312.5	346.5	376.1	373.5	299.5
		% growth re. preceding quarter	-12.5	-13.3	-2.6	9.9	13.6	3.2	-21.5	12.8	10.9	8.5	-0.7	n.a.
		% growth re. one year ago	-11.1	-26.0	-32.0	-18.8	5.4	25.5	1.1	3.8	1.3	6.5	34.8	n.a.
	Utilisation	in percent (%)	70.5	60.6	63.8	72.9	86.5	89.9	80.8	84.1	83.4	85.3	89.3	88.7

Note: Before 1Q04 the category "< 200mm Wafers in MOS Total" was labelled "Other than 8 inch MOS wafers", and this also contained 300mm MOS wafers.

		2Q 01	3Q 01	4Q 01	1Q 02	2Q 02	3Q 02	4Q 02	1Q 03	2Q 03	3Q 03	4Q 03	1Q 04	
200mm wafers in MOS Total	Capacity	Wafer-starts per week x1000	734.8	745.9	739.9	729.1	754.3	776.8	837.1	771.8	781.2	815.1	847.1	868.0
		% growth re. preceding quarter	4.2	1.5	-0.8	-1.5	3.5	3.0	7.8	-7.8	1.2	4.3	3.9	2.5
		% growth re. one year ago	18.1	7.5	5.8	3.4	2.7	4.1	13.1	5.9	3.6	4.9	1.2	12.5
	Actual Wafer-Starts	Wafer-starts per week x1000	556.8	493.8	498.7	589.3	662.0	658.4	689.1	643.1	687.5	738.1	795.2	835.4
		% growth re. preceding quarter	-8.0	-11.3	1.0	18.2	12.3	-0.5	4.7	-6.7	6.9	7.4	7.7	5.1
		% growth re. one year ago	-9.0	-27.9	-26.2	-2.6	18.9	33.3	38.2	9.1	3.9	12.1	15.4	29.9
	Utilisation	in percent (%)	75.8	66.2	67.4	80.8	87.8	84.8	82.3	83.3	88.0	90.6	93.9	96.2

		2Q 01	3Q 01	4Q 01	1Q 02	2Q 02	3Q 02	4Q 02	1Q 03	2Q 03	3Q 03	4Q 03	1Q 04	
300mm wafers in MOS Total	Capacity	WSpW x 1000 expressed in 8 inch equivalent wafers											59.9	
		WSpW x 1000 expressed in numbers of wafers												26.6
		% growth re. preceding quarter												
	Actual Wafer-Starts	WSpW x 1000 expressed in 8 inch equivalent wafers												55.1
		WSpW x 1000 expressed in numbers of wafers												24.5
		% growth re. preceding quarter												
	Utilisation	in percent (%)												92.1

ITALIC numbers reflect revised inputs

These statistics are based on data supplied by merchant IC manufacturers who together represent the great majority of the world's IC production.