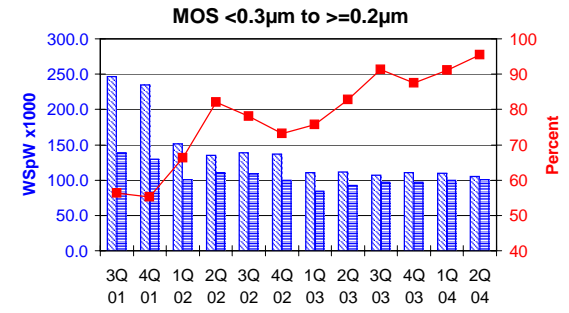
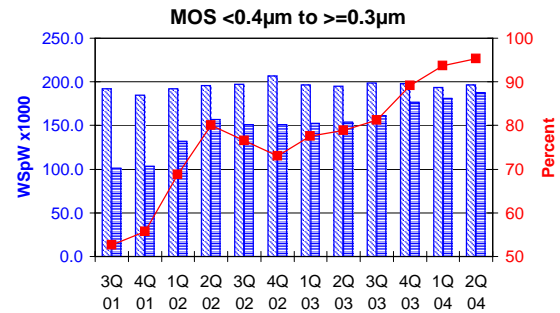
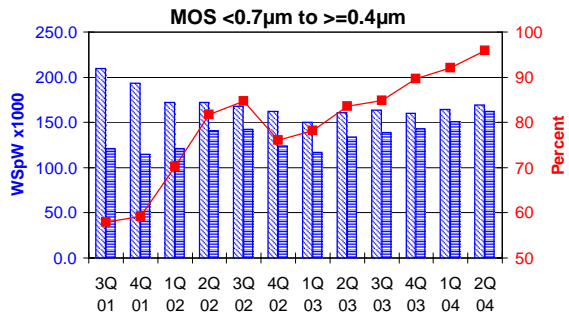
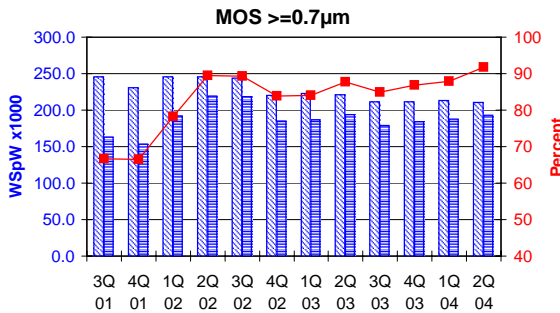


All MOS data are expressed in 8 inch equivalent wafers.

WSpW = Wafer-Starts per Week.

Legends: Capacity WSpW (blue hatched bar), Actual WSpW (blue solid bar), Utilisation of capacity in percent (red line with square markers)



			3Q 01	4Q 01	1Q 02	2Q 02	3Q 02	4Q 02	1Q 03	2Q 03	3Q 03	4Q 03	1Q 04	2Q 04
MOS ≥0.7µm	Capacity	Wafer-starts per week x 1000	245.2	230.3	245.4	245.4	244.2	220.6	222.9	221.3	211.1	211.6	213.2	210.4
		% growth re. preceding quarter	-5.1	-6.1	6.6	0.0	-0.5	-9.7	1.0	-0.7	-4.6	0.2	0.8	-1.3
		% growth re. one year ago	-10.2	-14.9	-7.6	-5.0	-0.4	-4.2	-9.2	-9.8	-13.6	-4.1	-4.4	-4.9
	Actual Wafer-Starts	Wafer-starts per week x 1000	163.4	153.3	191.9	219.6	218.1	185.1	187.2	194.0	179.1	183.9	187.5	193.2
		% growth re. preceding quarter	-13.7	-6.2	25.2	14.4	-0.7	-15.1	1.1	3.6	-7.7	2.7	2.0	3.0
Utilisation	in percent (%)	66.6	66.6	78.2	89.5	89.3	83.9	84.0	87.7	84.8	86.9	87.9	91.8	

			3Q 01	4Q 01	1Q 02	2Q 02	3Q 02	4Q 02	1Q 03	2Q 03	3Q 03	4Q 03	1Q 04	2Q 04
MOS <0.7µm to ≥0.4µm	Capacity	Wafer-starts per week x1000	209.3	193.4	172.1	172.2	168.2	162.4	149.9	160.5	163.6	159.8	164.0	169.0
		% growth re. preceding quarter	-2.4	-7.6	-11.0	0.1	-2.3	-3.4	-7.7	7.1	1.9	-2.3	2.6	3.0
		% growth re. one year ago	-1.4	-13.9	-16.1	-19.7	-19.6	-16.0	-12.9	-6.8	-2.7	-4.3	9.4	5.3
	Actual Wafer-Starts	Wafer-starts per week x1000	121.2	114.5	120.8	140.7	142.5	123.6	117.2	134.1	138.7	143.2	150.9	162.0
		% growth re. preceding quarter	-16.1	-5.5	5.5	16.5	1.3	-13.3	-5.2	14.4	3.4	3.2	5.4	7.4
Utilisation	in percent (%)	57.9	59.2	70.2	81.7	84.7	76.1	78.2	83.6	84.8	89.6	92.0	95.9	

			3Q 01	4Q 01	1Q 02	2Q 02	3Q 02	4Q 02	1Q 03	2Q 03	3Q 03	4Q 03	1Q 04	2Q 04
MOS <0.4µm to ≥0.3µm	Capacity	Wafer-starts per week x1000	192.1	184.9	192.1	196.0	197.3	207.1	196.6	194.9	198.8	198.2	193.5	196.8
		% growth re. preceding quarter	2.3	-3.7	3.9	2.0	0.7	5.0	-5.1	-0.9	2.0	-0.3	-2.4	1.7
		% growth re. one year ago	-6.7	-11.0	8.5	4.4	2.7	12.0	2.3	-0.6	0.8	-4.3	-1.6	1.0
	Actual Wafer-Starts	Wafer-starts per week x1000	101.2	103.1	132.0	157.0	151.0	151.3	152.4	153.8	161.4	176.6	181.2	187.6
		% growth re. preceding quarter	-18.1	1.9	28.0	18.9	-3.8	0.2	0.7	0.9	4.9	9.4	2.6	3.5
Utilisation	in percent (%)	52.7	55.8	68.7	80.1	76.5	73.1	77.5	78.9	81.2	89.1	93.6	95.3	

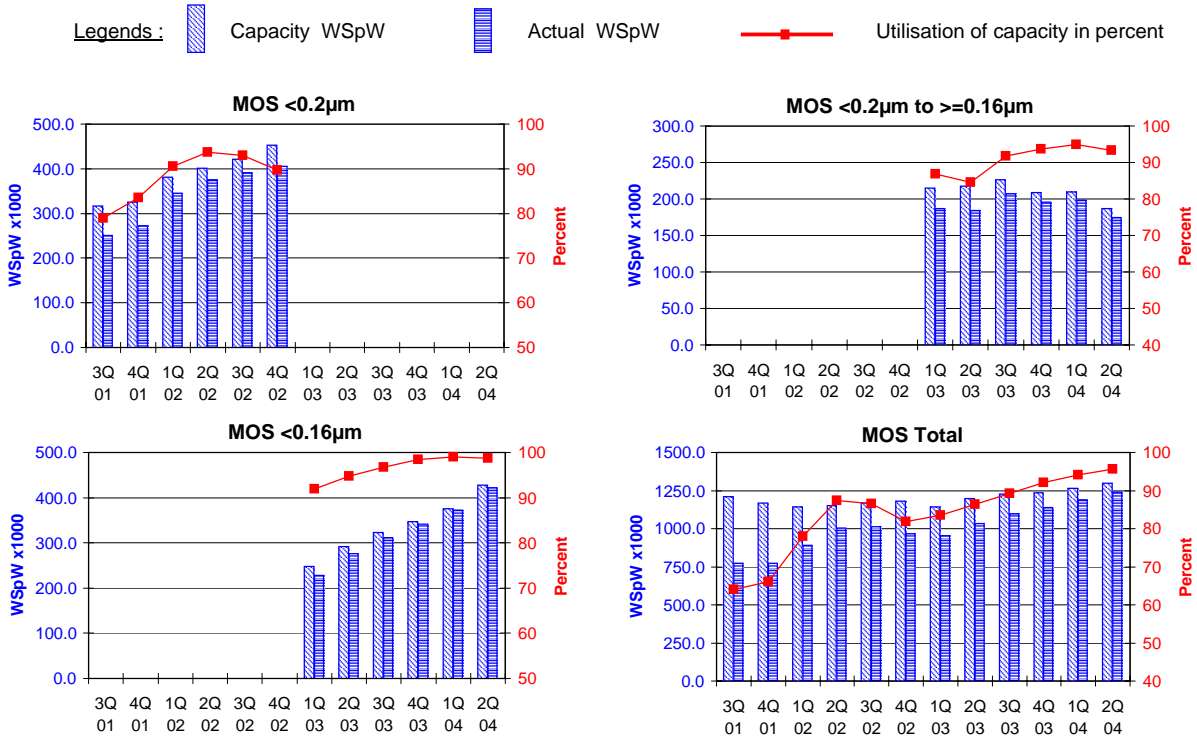
			3Q 01	4Q 01	1Q 02	2Q 02	3Q 02	4Q 02	1Q 03	2Q 03	3Q 03	4Q 03	1Q 04	2Q 04
MOS <0.3µm to ≥0.2µm	Capacity	Wafer-starts per week x 1000	246.6	234.7	151.3	135.4	138.9	136.7	111.0	111.2	106.7	110.5	109.6	105.3
		% growth re. preceding quarter	2.2	-4.8	-35.5	-10.5	2.6	-1.6	-18.8	0.2	-4.0	3.6	-0.8	-3.9
		% growth re. one year ago			-47.6	-43.9	-43.7	-41.8	-26.6	-17.9	-23.2	-19.2	-1.3	-5.3
	Actual Wafer-Starts	Wafer-starts per week x 1000	138.8	129.8	100.2	111.0	108.5	100.0	84.0	92.0	97.4	96.6	99.8	100.5
		% growth re. preceding quarter	-22.2	-6.5	-22.8	10.8	-2.3	-7.8	-16.0	9.5	5.9	-0.8	3.3	0.7
Utilisation	in percent (%)	56.3	55.3	66.2	82.0	78.1	73.2	75.7	82.7	91.3	87.4	91.1	95.4	

Yellow high-lighted cells reflect revised inputs

These statistics are based on data supplied by merchant IC manufacturers who together represent the great majority of the world's IC production.

All MOS data are expressed in 8 inch equivalent wafers.

WSpW = Wafer-Starts per Week.



		3Q 01	4Q 01	1Q 02	2Q 02	3Q 02	4Q 02	1Q 03	2Q 03	3Q 03	4Q 03	1Q 04	2Q 04
MOS <0.2µm	Capacity	Wafer-starts per week x1000	317.2	325.8	381.3	401.0	420.8	453.0					
		% growth re. preceding quarter	8.1	2.7	17.0	5.2	4.9	7.7					
		% growth re. one year ago			71.9	36.6	32.7	39.0					
	Actual Wafer-Starts	Wafer-starts per week x1000	250.5	271.9	345.5	375.8	391.3	406.1					
		% growth re. preceding quarter	2.0	8.5	27.1	8.8	4.1	3.8					
		% growth re. one year ago			92.3	53.0	56.2	49.4					
Utilisation	in percent (%)	79.0	83.5	90.6	93.7	93.0	89.6						

MOS <0.2µm to >=0.16µm	Capacity	Wafer-starts per week x1000					215.2	217.6	226.1	208.8	209.3	187.2
		% growth re. preceding quarter						1.1	3.9	-7.7	0.2	-10.6
		% growth re. one year ago									-2.7	-14.0
	Actual Wafer-Starts	Wafer-starts per week x1000					186.9	184.1	207.3	195.7	198.6	174.7
		% growth re. preceding quarter						-1.5	12.6	-5.6	1.5	-12.0
		% growth re. one year ago									6.3	-5.1
Utilisation	in percent (%)					86.8	84.6	91.7	93.7	94.9	93.3	

MOS <0.16µm	Capacity	Wafer-starts per week x1000						248.0	291.4	322.5	346.9	375.7	428.3
		% growth re. preceding quarter							17.5	10.7	7.6	8.3	14.0
		% growth re. one year ago										51.5	47.0
	Actual Wafer-Starts	Wafer-starts per week x1000						227.9	276.0	312.1	341.5	372.0	422.6
		% growth re. preceding quarter							21.1	13.1	9.4	8.9	13.6
		% growth re. one year ago										63.2	53.1
Utilisation	in percent (%)						91.9	94.7	96.8	98.4	99.0	98.7	

MOS Total	Capacity	Wafer-starts per week x 1000	1210.4	1169.1	1142.2	1150.0	1169.4	1179.8	1143.6	1196.9	1228.8	1235.8	1265.3	1297.0
		% growth re. preceding quarter	1.3	-3.4	-2.3	0.7	1.7	0.9	-3.1	4.7	2.7	0.6	2.4	2.5
		% growth re. one year ago	10.3	1.2	-1.4	-3.8	-3.4	0.9	0.1	4.1	5.1	4.7	10.6	8.4
	Actual Wafer-Starts	Wafer-starts per week x 1000	775.1	772.6	890.4	1004.1	1011.4	966.1	955.6	1034.0	1096.0	1137.5	1190.0	1240.6
		% growth re. preceding quarter	-12.1	-0.3	15.2	12.8	0.7	-4.5	-1.1	8.2	6.0	3.8	4.6	4.3
		% growth re. one year ago	-27.2	-28.4	-8.8	13.9	30.5	25.0	7.3	3.0	8.4	17.7	24.5	20.0
Utilisation	in percent (%)	64.0	66.1	78.0	87.3	86.5	81.9	83.6	86.4	89.2	92.0	94.0	95.7	

Yellow high-lighted cells reflect revised inputs

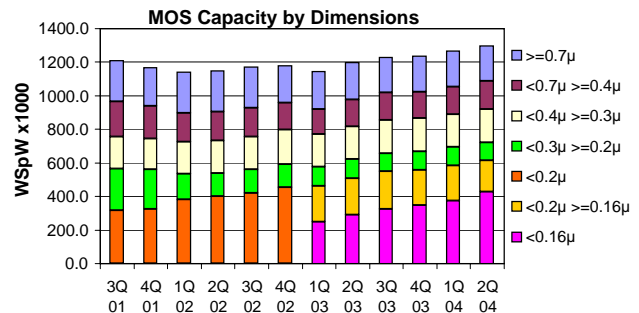
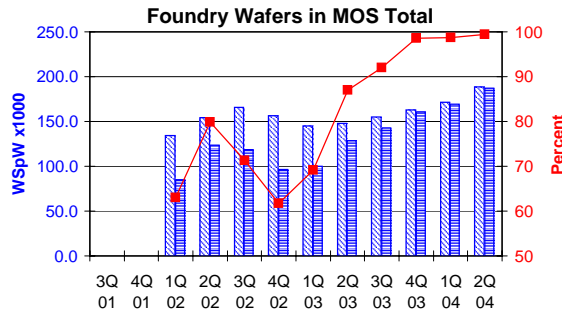
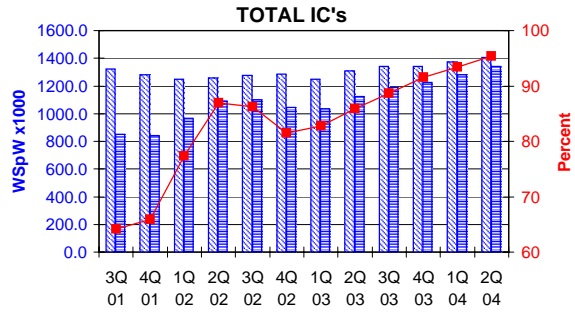
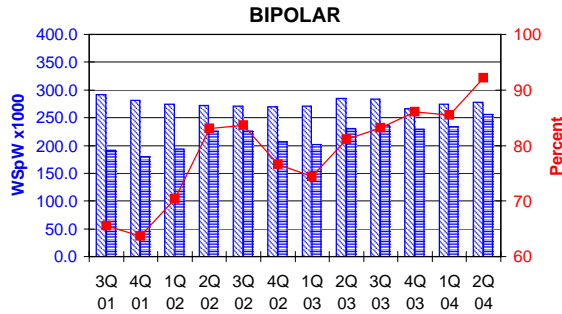
These statistics are based on data supplied by merchant IC manufacturers who together represent the great majority of the world's IC production.

All MOS data are expressed in 8 inch equivalent wafers. Bipolar data are expressed in 5 inch equivalent wafers.

"Total IC's" include Bipolar data, which were converted for this purpose from 5 inch to 8 inch equivalent wafers by the factor 0.391.

WSpW = Wafer-Starts per Week.

Legends: Capacity WSpW Actual WSpW Utilisation of capacity in percent



		3Q 01	4Q 01	1Q 02	2Q 02	3Q 02	4Q 02	1Q 03	2Q 03	3Q 03	4Q 03	1Q 04	2Q 04	
BIPOLAR (5 inch equivs.)	Capacity	Wafer-starts per week x1000	291.6	281.5	274.6	272.2	270.6	269.4	271.1	284.3	283.5	266.6	274.2	278.2
		% growth re. preceding quarter	-4.0	-3.5	-2.5	-0.9	-0.6	-0.4	0.6	4.9	-0.3	-6.0	2.9	1.5
		% growth re. one year ago	-9.0	-13.5	-8.1	-10.4	-7.2	-4.3	-1.3	4.4	4.8	-1.0	1.1	-2.1
	Actual Wafer-Starts	Wafer-starts per week x1000	191.2	179.3	193.4	226.1	226.4	206.4	201.7	230.7	235.8	229.5	234.3	256.4
		% growth re. preceding quarter	-7.1	-6.2	7.9	16.9	0.1	-8.8	-2.3	14.4	2.2	-2.7	2.1	9.4
		% growth re. one year ago	-33.7	-37.0	-19.2	9.9	18.4	15.1	4.3	2.0	4.2	11.2	16.2	11.1
Utilisation	in percent (%)	65.6	63.7	70.4	83.1	83.7	76.6	74.4	81.1	83.2	86.1	85.4	92.2	

		3Q 01	4Q 01	1Q 02	2Q 02	3Q 02	4Q 02	1Q 03	2Q 03	3Q 03	4Q 03	1Q 04	2Q 04	
TOTAL IC's	Capacity	Wafer-starts per week x1000	1324.4	1279.2	1249.6	1256.4	1275.2	1285.1	1249.6	1308.1	1339.6	1340.0	1372.5	1405.8
		% growth re. preceding quarter	0.8	-3.4	-2.3	0.5	1.5	0.8	-2.8	4.7	2.4	0.0	2.4	2.4
		% growth re. one year ago	8.4	-0.3	-2.0	-4.4	-3.7	0.5	0.0	4.1	5.1	4.3	9.8	7.5
	Actual Wafer-Starts	Wafer-starts per week x1000	849.9	842.7	966.0	1092.5	1099.9	1046.8	1034.5	1124.2	1188.2	1227.2	1281.6	1340.9
		% growth re. preceding quarter	-11.6	-0.8	14.6	13.1	0.7	-4.8	-1.2	8.7	5.7	3.3	4.4	4.6
		% growth re. one year ago	-27.8	-29.2	-9.7	13.6	29.4	24.2	7.1	2.9	8.0	17.2	23.9	19.3
Utilisation	in percent (%)	64.2	65.9	77.3	87.0	86.3	81.5	82.8	85.9	88.7	91.6	93.4	95.4	

		3Q 01	4Q 01	1Q 02	2Q 02	3Q 02	4Q 02	1Q 03	2Q 03	3Q 03	4Q 03	1Q 04	2Q 04	
Foundry Wafers in MOS Total	Capacity	Wafer-starts per week x1000			134.5	154.4	166.0	156.7	145.0	147.6	155.3	162.8	171.6	188.7
		% growth re. preceding quarter				14.8	7.5	-5.6	1.8	5.2	4.8	5.4	10.0	
		% growth re. one year ago							7.8	-4.4	-6.4	3.9	18.3	27.8
	Actual Wafer-Starts	Wafer-starts per week x1000			84.7	123.3	118.4	96.6	100.2	128.4	142.9	160.5	169.4	187.5
		% growth re. preceding quarter				45.6	-4.0	-18.4	3.7	28.1	11.3	12.3	5.5	10.7
		% growth re. one year ago							18.3	4.1	20.7	66.1	69.1	46.0
Utilisation	in percent (%)			63.0	79.9	71.3	61.6	69.1	87.0	92.0	98.6	98.7	99.4	

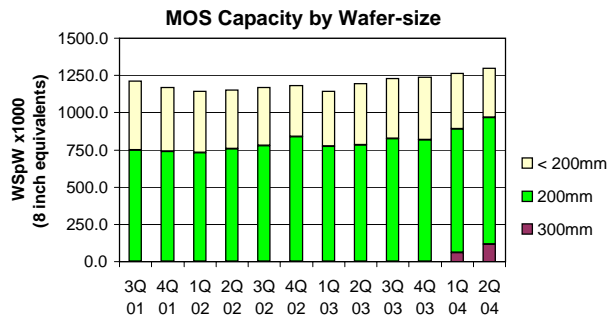
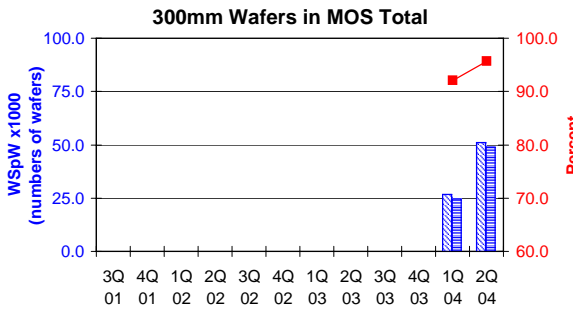
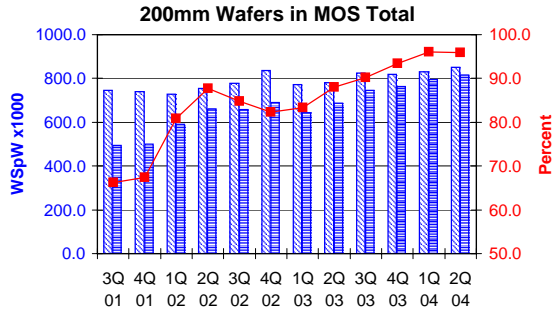
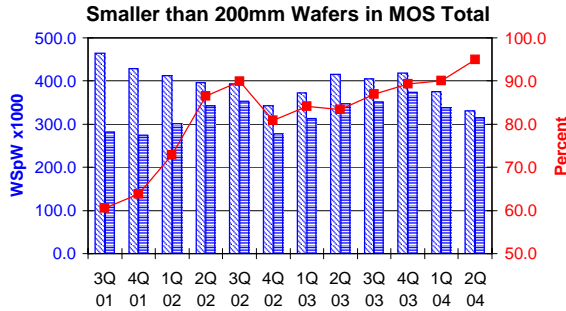
Yellow high-lighted cells reflect revised inputs

These statistics are based on data supplied by merchant IC manufacturers who together represent the great majority of the world's IC production.

All MOS data are expressed in 8 inch equivalent wafers, except for the 300mm wafer data where annotated as "numbers of wafers".

WSpW = Wafer-Starts per Week.

Legends : Capacity WSpW Actual WSpW Utilisation of capacity in percent



		3Q 01	4Q 01	1Q 02	2Q 02	3Q 02	4Q 02	1Q 03	2Q 03	3Q 03	4Q 03	1Q 04	2Q 04	
< 200mm Wafers in MOS Total	<b>Capacity</b>	Wafer-starts per week x 1000	464.5	429.2	413.1	395.7	392.6	342.7	371.8	415.7	404.4	418.4	375.9	331.0
		% growth re. preceding quarter	0.9	-7.6	-3.8	-4.2	-0.8	-12.7	8.5	11.8	-2.7	3.5	n.a.	-12.0
		% growth re. one year ago	15.2	-5.9	-8.9	-14.0	-15.5	-20.2	-10.0	5.1	3.0	22.1	n.a.	n.a.
	<b>Actual Wafer-Starts</b>	Wafer-starts per week x1000	281.3	273.9	301.1	342.1	353.0	277.0	312.5	346.5	351.8	373.5	338.7	314.1
		% growth re. preceding quarter	-13.3	-2.6	9.9	13.6	3.2	-21.5	12.8	10.9	1.5	6.2	n.a.	-7.2
		% growth re. one year ago	-26.0	-32.0	-18.8	5.4	25.5	1.1	3.8	1.3	-0.3	34.8	n.a.	n.a.
<b>Utilisation</b>	in percent (%)	60.6	63.8	72.9	86.5	89.9	80.8	84.1	83.4	87.0	89.3	90.1	94.9	

**Note :** Before 1Q04 the category "< 200mm Wafers in MOS Total" was labelled "Other than 8 inch MOS wafers", and this also contained 300mm MOS wafers.

		3Q 01	4Q 01	1Q 02	2Q 02	3Q 02	4Q 02	1Q 03	2Q 03	3Q 03	4Q 03	1Q 04	2Q 04	
200mm wafers in MOS Total	<b>Capacity</b>	Wafer-starts per week x1000	745.9	739.9	729.1	754.3	776.8	837.1	771.8	781.2	824.4	817.4	829.5	850.8
		% growth re. preceding quarter	1.5	-0.8	-1.5	3.5	3.0	7.8	-7.8	1.2	5.5	-0.8	1.5	2.6
		% growth re. one year ago	7.5	5.8	3.4	2.7	4.1	13.1	5.9	3.6	6.1	-2.4	7.5	8.9
	<b>Actual Wafer-Starts</b>	Wafer-starts per week x1000	493.8	498.7	589.3	662.0	658.4	689.1	643.1	687.5	744.2	764.0	796.2	816.2
		% growth re. preceding quarter	-11.3	1.0	18.2	12.3	-0.5	4.7	-6.7	6.9	8.2	2.7	4.2	2.5
		% growth re. one year ago	-27.9	-26.2	-2.6	18.9	33.3	38.2	9.1	3.9	13.0	10.9	23.8	18.7
<b>Utilisation</b>	in percent (%)	66.2	67.4	80.8	87.8	84.8	82.3	83.3	88.0	90.3	93.5	96.0	95.9	

		3Q 01	4Q 01	1Q 02	2Q 02	3Q 02	4Q 02	1Q 03	2Q 03	3Q 03	4Q 03	1Q 04	2Q 04	
300mm wafers in MOS Total	<b>Capacity</b>	WSpW x 1000 expressed in 8 inch equivalent wafers										59.9	115.2	
		WSpW x 1000 expressed in numbers of wafers										26.6	51.2	
		% growth re. preceding quarter												
		% growth re. one year ago												
	<b>Actual Wafer-Starts</b>	WSpW x 1000 expressed in 8 inch equivalent wafers											55.1	110.3
		WSpW x 1000 expressed in numbers of wafers											24.5	49.0
% growth re. preceding quarter														
<b>Utilisation</b>	in percent (%)											92.1	95.7	

Yellow high-lighted cells reflect revised inputs

These statistics are based on data supplied by merchant IC manufacturers who together represent the great majority of the world's IC production.