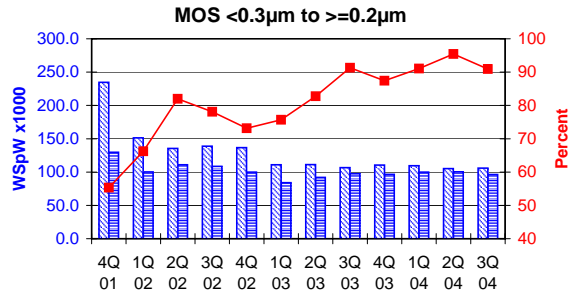
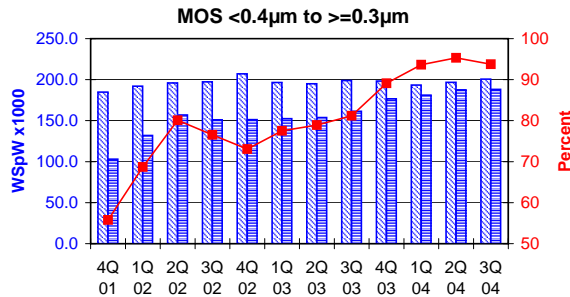
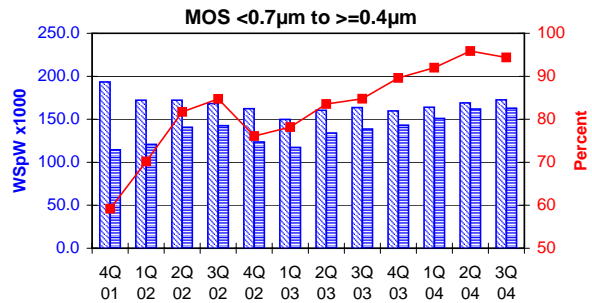
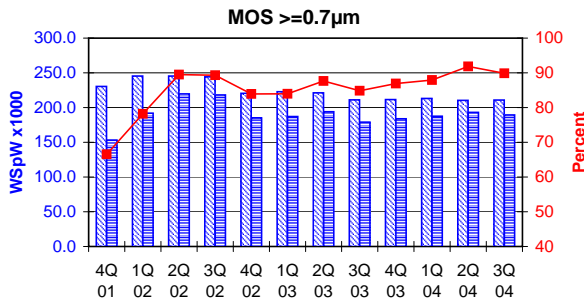


All MOS data are expressed in 8 inch equivalent wafers.

WSpW = Wafer-Starts per Week.

Legends : Capacity WSpW Actual WSpW Utilisation of capacity in percent


		4Q 01	1Q 02	2Q 02	3Q 02	4Q 02	1Q 03	2Q 03	3Q 03	4Q 03	1Q 04	2Q 04	3Q 04	
MOS $\geq 0.7\mu\text{m}$	Capacity	Wafer-starts per week x 1000	230.3	245.4	245.4	244.2	220.6	222.9	221.3	211.1	211.6	213.2	210.4	210.9
		% growth re. preceding quarter	-6.1	6.6	0.0	-0.5	-9.7	1.0	-0.7	-4.6	0.2	0.8	-1.3	0.2
		% growth re. one year ago	-14.9	-7.6	-5.0	-0.4	-4.2	-9.2	-9.8	-13.6	-4.1	-4.4	-4.9	-0.1
	Actual Wafer-Starts	Wafer-starts per week x 1000	153.3	191.9	219.6	218.1	185.1	187.2	194.0	179.1	183.9	187.5	193.2	189.5
		% growth re. preceding quarter	-6.2	25.2	14.4	-0.7	-15.1	1.1	3.6	-7.7	2.7	2.0	3.0	-1.9
		% growth re. one year ago	-39.7	-10.5	16.0	33.5	20.7	-2.4	-11.7	-17.9	-0.6	0.2	-0.4	5.8
Utilisation	in percent (%)	66.6	78.2	89.5	89.3	83.9	84.0	87.7	84.8	86.9	87.9	91.8	89.9	

		4Q 01	1Q 02	2Q 02	3Q 02	4Q 02	1Q 03	2Q 03	3Q 03	4Q 03	1Q 04	2Q 04	3Q 04	
MOS $< 0.7\mu\text{m}$ to $\geq 0.4\mu\text{m}$	Capacity	Wafer-starts per week x1000	193.4	172.1	172.2	168.2	162.4	149.9	160.5	163.6	159.8	164.0	169.0	172.6
		% growth re. preceding quarter	-7.6	-11.0	0.1	-2.3	-3.4	-7.7	7.1	1.9	-2.3	2.6	3.0	2.1
		% growth re. one year ago	-13.9	-16.1	-19.7	-19.6	-16.0	-12.9	-6.8	-2.7	-1.6	9.4	5.3	5.5
	Actual Wafer-Starts	Wafer-starts per week x1000	114.5	120.8	140.7	142.5	123.6	117.2	134.1	138.7	143.2	150.9	162.0	162.9
		% growth re. preceding quarter	-5.5	5.5	16.5	1.3	-13.3	-5.2	14.4	3.4	3.2	5.4	7.4	0.6
		% growth re. one year ago	-45.1	-32.8	-2.6	17.6	7.9	-3.0	-4.7	-2.7	15.9	28.8	20.8	17.4
Utilisation	in percent (%)	59.2	70.2	81.7	84.7	76.1	78.2	83.6	84.8	89.6	92.0	95.9	94.4	

		4Q 01	1Q 02	2Q 02	3Q 02	4Q 02	1Q 03	2Q 03	3Q 03	4Q 03	1Q 04	2Q 04	3Q 04	
MOS $< 0.4\mu\text{m}$ to $\geq 0.3\mu\text{m}$	Capacity	Wafer-starts per week x1000	184.9	192.1	196.0	197.3	207.1	196.6	194.9	198.8	198.2	193.5	196.8	200.6
		% growth re. preceding quarter	-3.7	3.9	2.0	0.7	5.0	-5.1	-0.9	2.0	-0.3	-2.4	1.7	1.9
		% growth re. one year ago	-11.0	8.5	4.4	2.7	12.0	2.3	-0.6	0.8	-4.3	-1.6	1.0	0.9
	Actual Wafer-Starts	Wafer-starts per week x1000	103.1	132.0	157.0	151.0	151.3	152.4	153.8	161.4	176.6	181.2	187.6	188.1
		% growth re. preceding quarter	1.9	28.0	18.9	-3.8	0.2	0.7	0.9	4.9	9.4	2.6	3.5	0.3
		% growth re. one year ago	-47.9	-13.0	27.0	49.2	46.8	15.5	-2.0	6.9	16.7	18.9	22.0	16.5
Utilisation	in percent (%)	55.8	68.7	80.1	76.5	73.1	77.5	78.9	81.2	89.1	93.6	95.3	93.8	

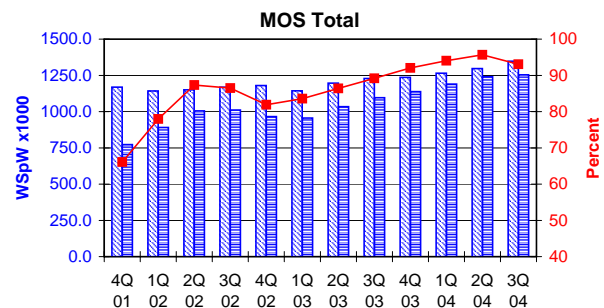
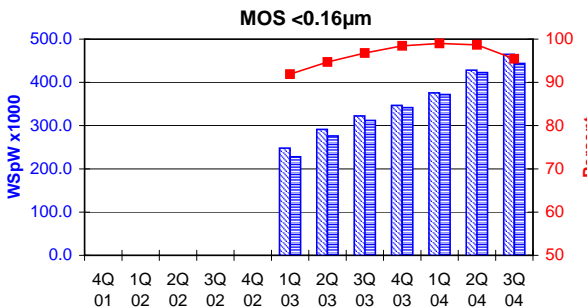
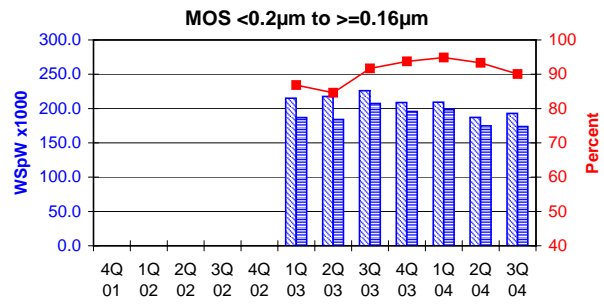
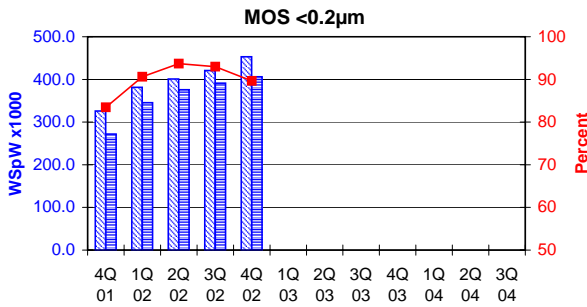
		4Q 01	1Q 02	2Q 02	3Q 02	4Q 02	1Q 03	2Q 03	3Q 03	4Q 03	1Q 04	2Q 04	3Q 04	
MOS $< 0.3\mu\text{m}$ to $\geq 0.2\mu\text{m}$	Capacity	Wafer-starts per week x 1000	234.7	151.3	135.4	138.9	136.7	111.0	111.2	106.7	110.5	109.6	105.3	105.9
		% growth re. preceding quarter	-4.8	-35.5	-10.5	2.6	-1.6	-18.8	0.2	-4.0	3.6	-0.8	-3.9	0.6
		% growth re. one year ago	-47.6	-43.9	-43.7	-41.8	-26.6	-17.9	-23.2	-19.2	-1.3	-5.3	-0.7	
	Actual Wafer-Starts	Wafer-starts per week x 1000	129.8	100.2	111.0	108.5	100.0	84.0	92.0	97.4	96.6	99.8	100.5	96.3
		% growth re. preceding quarter	-6.5	-22.8	10.8	-2.3	-7.8	-16.0	9.5	5.9	-0.8	3.3	0.7	-4.2
		% growth re. one year ago	-60.0	-37.8	-21.8	-23.0	-16.2	-17.1	-10.2	-3.4	18.8	9.2	-1.1	
Utilisation	in percent (%)	55.3	66.2	82.0	78.1	73.2	75.7	82.7	91.3	87.4	91.1	95.4	90.9	

These statistics are based on data supplied by merchant IC manufacturers who together represent the great majority of the world's IC production.

All MOS data are expressed in 8 inch equivalent wafers.

WSpW = Wafer-Starts per Week.

Legends : Capacity WSpW Actual WSpW Utilisation of capacity in percent



			4Q 01	1Q 02	2Q 02	3Q 02	4Q 02	1Q 03	2Q 03	3Q 03	4Q 03	1Q 04	2Q 04	3Q 04
MOS <0.2µm	Capacity	Wafer-starts per week x1000	325.8	381.3	401.0	420.8	453.0							
		% growth re. preceding quarter	2.7	17.0	5.2	4.9	7.7							
		% growth re. one year ago		71.9	36.6	32.7	39.0							
	Actual Wafer-Starts	Wafer-starts per week x1000	271.9	345.5	375.8	391.3	406.1							
		% growth re. preceding quarter	8.5	27.1	8.8	4.1	3.8							
		% growth re. one year ago		92.3	53.0	56.2	49.4							
Utilisation	in percent (%)	83.5	90.6	93.7	93.0	89.6								

			4Q 02	1Q 03	2Q 03	3Q 03	4Q 03	1Q 04	2Q 04	3Q 04
MOS <0.2µm to >=0.16µm	Capacity	Wafer-starts per week x1000		215.2	217.6	226.1	208.8	209.3	187.2	192.9
		% growth re. preceding quarter			1.1	3.9	-7.7	0.2	-10.6	3.0
		% growth re. one year ago						-2.7	-14.0	-14.7
	Actual Wafer-Starts	Wafer-starts per week x1000		186.9	184.1	207.3	195.7	198.6	174.7	173.7
		% growth re. preceding quarter			-1.5	12.6	-5.6	1.5	-12.0	-0.6
		% growth re. one year ago						6.3	-5.1	-16.2
Utilisation	in percent (%)		86.8	84.6	91.7	93.7	94.9	93.3	90.0	

			4Q 03	1Q 04	2Q 04	3Q 04
MOS <0.16µm	Capacity	Wafer-starts per week x1000	248.0	291.4	322.5	346.9
		% growth re. preceding quarter		17.5	10.7	7.6
		% growth re. one year ago			51.5	47.0
	Actual Wafer-Starts	Wafer-starts per week x1000	227.9	276.0	312.1	341.5
		% growth re. preceding quarter		21.1	13.1	9.4
		% growth re. one year ago			63.2	53.1
Utilisation	in percent (%)	91.9	94.7	96.8	98.4	

			4Q 04	1Q 05	2Q 05	3Q 05
MOS Total	Capacity	Wafer-starts per week x 1000	1169.1	1142.2	1150.0	1169.4
		% growth re. preceding quarter	-3.4	-2.3	0.7	1.7
		% growth re. one year ago	1.2	-1.4	-3.8	-3.4
	Actual Wafer-Starts	Wafer-starts per week x 1000	772.6	890.4	1004.1	1011.4
		% growth re. preceding quarter	-0.3	15.2	12.8	0.7
		% growth re. one year ago	-28.4	-8.8	13.9	30.5
Utilisation	in percent (%)	66.1	78.0	87.3	86.5	

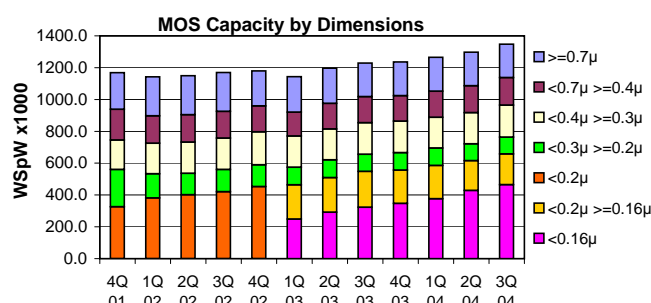
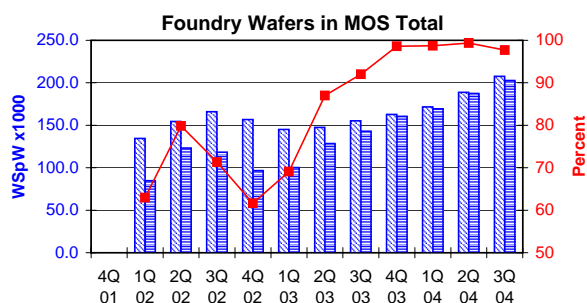
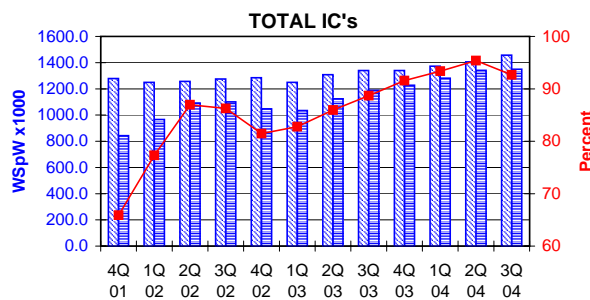
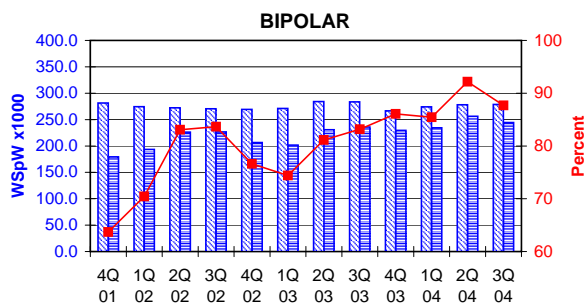
These statistics are based on data supplied by merchant IC manufacturers who together represent the great majority of the world's IC production.

All MOS data are expressed in 8 inch equivalent wafers. Bipolar data are expressed in 5 inch equivalent wafers.

"Total IC's" include Bipolar data, which were converted for this purpose from 5 inch to 8 inch equivalent wafers by the factor 0.391.

WSpW = Wafer-Starts per Week.

Legends : Capacity WSpW Actual WSpW Utilisation of capacity in percent



		4Q 01	1Q 02	2Q 02	3Q 02	4Q 02	1Q 03	2Q 03	3Q 03	4Q 03	1Q 04	2Q 04	3Q 04	
BIPOLAR (\$ inch equivs.)	Capacity	Wafer-starts per week x1000	281.5	274.6	272.2	270.6	269.4	271.1	284.3	283.5	266.6	274.2	278.2	278.8
		% growth re. preceding quarter	-3.5	-2.5	-0.9	-0.6	-0.4	0.6	4.9	-0.3	-6.0	2.9	1.5	0.2
		% growth re. one year ago	-13.5	-8.1	-10.4	-7.2	-4.3	-1.3	4.4	4.8	-1.0	1.1	-2.1	-1.7
	Actual Wafer-Starts	Wafer-starts per week x1000	179.3	193.4	226.1	226.4	206.4	201.7	230.7	235.8	229.5	234.3	256.4	244.5
		% growth re. preceding quarter	-6.2	7.9	16.9	0.1	-8.8	-2.3	14.4	2.2	-2.7	2.1	9.4	-4.6
		% growth re. one year ago	-37.0	-19.2	9.9	18.4	15.1	4.3	2.0	4.2	11.2	16.2	11.1	3.7
Utilisation	in percent (%)	63.7	70.4	83.1	83.7	76.6	74.4	81.1	83.2	86.1	85.4	92.2	87.7	

		4Q 01	1Q 02	2Q 02	3Q 02	4Q 02	1Q 03	2Q 03	3Q 03	4Q 03	1Q 04	2Q 04	3Q 04	
TOTAL IC's	Capacity	Wafer-starts per week x1000	1279.2	1249.6	1256.4	1275.2	1285.1	1249.6	1308.1	1339.6	1340.0	1372.5	1405.8	1456.9
		% growth re. preceding quarter	-3.4	-2.3	0.5	1.5	0.8	-2.8	4.7	2.4	0.0	2.4	2.4	3.6
		% growth re. one year ago	-0.3	-2.0	-4.4	-3.7	0.5	0.0	4.1	5.1	4.3	9.8	7.5	8.8
	Actual Wafer-Starts	Wafer-starts per week x1000	842.7	966.0	1092.5	1099.9	1046.8	1034.5	1124.2	1188.2	1227.2	1281.6	1340.9	1350.0
		% growth re. preceding quarter	-0.8	14.6	13.1	0.7	-4.8	-1.2	8.7	5.7	3.3	4.4	4.6	0.7
		% growth re. one year ago	-29.2	-9.7	13.6	29.4	24.2	7.1	2.9	8.0	17.2	23.9	19.3	13.6
Utilisation	in percent (%)	65.9	77.3	87.0	86.3	81.5	82.8	85.9	88.7	91.6	93.4	95.4	92.7	

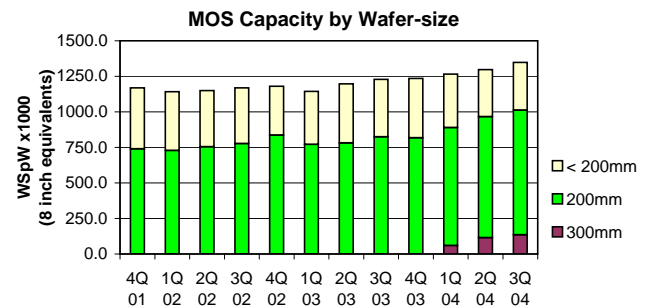
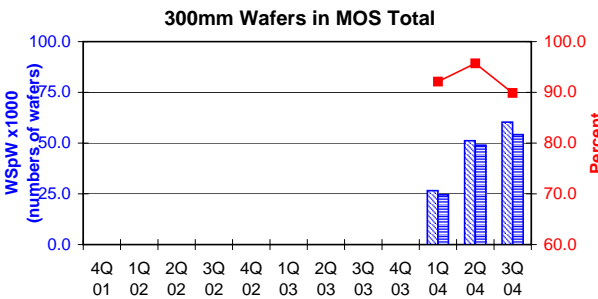
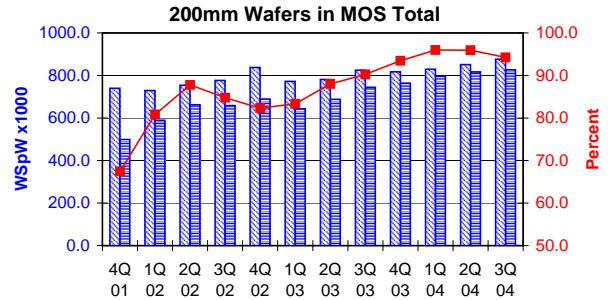
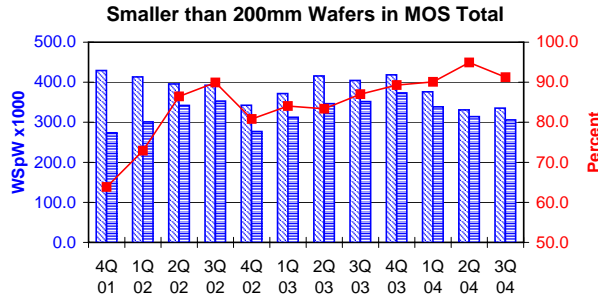
		4Q 01	1Q 02	2Q 02	3Q 02	4Q 02	1Q 03	2Q 03	3Q 03	4Q 03	1Q 04	2Q 04	3Q 04
Foundry Wafers in MOS Total	Capacity	Wafer-starts per week x1000	134.5	154.4	166.0	156.7	145.0	147.6	155.3	162.8	171.6	188.7	207.6
		% growth re. preceding quarter		14.8	7.5	-5.6	-7.5	1.8	5.2	4.8	5.4	10.0	10.0
		% growth re. one year ago					7.8	-4.4	-6.4	3.9	18.3	27.8	33.7
	Actual Wafer-Starts	Wafer-starts per week x1000	84.7	123.3	118.4	96.6	100.2	128.4	142.9	160.5	169.4	187.5	202.8
		% growth re. preceding quarter		45.6	-4.0	-18.4	3.7	28.1	11.3	12.3	5.5	10.7	8.2
		% growth re. one year ago					18.3	4.1	20.7	66.1	69.1	46.0	41.9
Utilisation	in percent (%)	63.0	79.9	71.3	61.6	69.1	87.0	92.0	98.6	98.7	99.4	97.7	

These statistics are based on data supplied by merchant IC manufacturers who together represent the great majority of the world's IC production.

All MOS data are expressed in 8 inch equivalent wafers, except for the 300mm wafer data where annotated as "numbers of wafers".

WSpW = Wafer-Starts per Week.

Legends : Capacity WSpW Actual WSpW Utilisation of capacity in percent



		4Q 01	1Q 02	2Q 02	3Q 02	4Q 02	1Q 03	2Q 03	3Q 03	4Q 03	1Q 04	2Q 04	3Q 04		
< 200mm Wafers in MOS Total	Capacity	Wafer-starts per week x 1000	429.2	413.1	395.7	392.6	342.7	371.8	415.7	404.4	418.4	375.9	331.0	335.3	
		% growth re. preceding quarter	-7.6	-3.8	-4.2	-0.8	-12.7	8.5	11.8	-2.7	3.5	n.a.	n.a.	-12.0	1.3
		% growth re. one year ago	-5.9	-8.9	-14.0	-15.5	-20.2	-10.0	5.1	3.0	22.1	n.a.	n.a.	n.a.	n.a.
	Actual Wafer-Starts	Wafer-starts per week x1000	273.9	301.1	342.1	353.0	277.0	312.5	346.5	351.8	373.5	338.7	314.1	305.9	
		% growth re. preceding quarter	-2.6	9.9	13.6	3.2	-21.5	12.8	10.9	1.5	6.2	n.a.	-7.2	-2.6	
		% growth re. one year ago	-32.0	-18.8	5.4	25.5	1.1	3.8	1.3	-0.3	34.8	n.a.	n.a.	n.a.	
	Utilisation	in percent (%)	63.8	72.9	86.5	89.9	80.8	84.1	83.4	87.0	89.3	90.1	94.9	91.2	

Note : Before 1Q04 the category "< 200mm Wafers in MOS Total" was labelled "Other than 8 inch MOS wafers", and this also contained 300mm MOS wafers

		4Q 01	1Q 02	2Q 02	3Q 02	4Q 02	1Q 03	2Q 03	3Q 03	4Q 03	1Q 04	2Q 04	3Q 04	
200mm wafers in MOS Total	Capacity	Wafer-starts per week x1000	739.9	729.1	754.3	776.8	837.1	771.8	781.2	824.4	817.4	829.5	850.8	876.9
		% growth re. preceding quarter	-0.8	-1.5	3.5	3.0	7.8	-7.8	1.2	5.5	-0.8	1.5	2.6	3.1
		% growth re. one year ago	5.8	3.4	2.7	4.1	13.1	5.9	3.6	6.1	-2.4	7.5	8.9	6.4
	Actual Wafer-Starts	Wafer-starts per week x1000	498.7	589.3	662.0	658.4	689.1	643.1	687.5	744.2	764.0	796.2	816.2	826.5
		% growth re. preceding quarter	1.0	18.2	12.3	-0.5	4.7	-6.7	6.9	8.2	2.7	4.2	2.5	1.3
		% growth re. one year ago	-26.2	-2.6	18.9	33.3	38.2	9.1	3.9	13.0	10.9	23.8	18.7	11.1
	Utilisation	in percent (%)	67.4	80.8	87.8	84.8	82.3	83.3	88.0	90.3	93.5	96.0	95.9	94.3

		4Q 01	1Q 02	2Q 02	3Q 02	4Q 02	1Q 03	2Q 03	3Q 03	4Q 03	1Q 04	2Q 04	3Q 04	
300mm wafers in MOS Total	Capacity	WSpW x 1000 expressed in 8 inch equivalent wafers									59.9	115.2	135.7	
		WSpW x 1000 expressed in numbers of wafers									26.6	51.2	60.3	
		% growth re. preceding quarter											92.5	17.8
		% growth re. one year ago												
	Actual Wafer-Starts	WSpW x 1000 expressed in 8 inch equivalent wafers										55.1	110.3	122.0
		WSpW x 1000 expressed in numbers of wafers										24.5	49.0	54.2
		% growth re. preceding quarter											100.0	10.6
		% growth re. one year ago												
	Utilisation	in percent (%)										92.1	95.7	89.9

These statistics are based on data supplied by merchant IC manufacturers who together represent the great majority of the world's IC production.