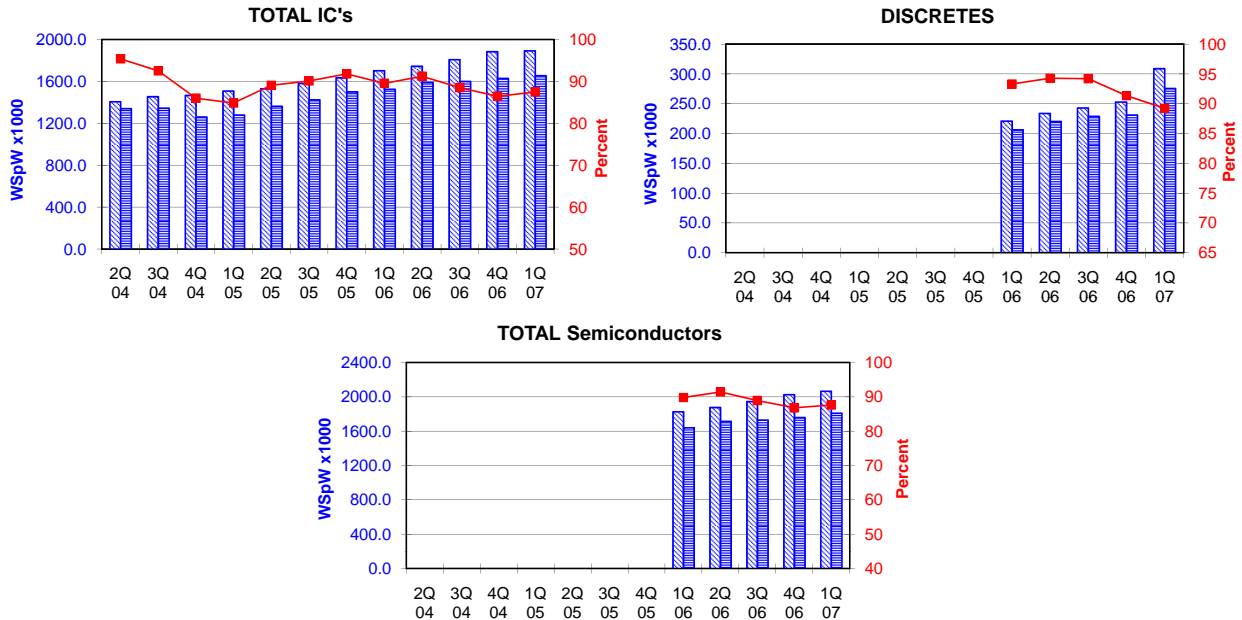


TOTAL IC's and TOTAL Semiconductors data are expressed in 8 inch equivalent wafers. DISCRETES data are expressed in 6 inch equivalent wafers. "TOTAL IC's" include Bipolar data, which were converted for this purpose from 5 inch to 8 inch equivalent wafers by the factor 0.391. "TOTAL Semiconductors" include DISCRETES data, which were converted for this purpose from 6 inch to 8 inch equivalent wafers by the factor 0.563.

WSpW = Wafer-Starts per Week.

Legends : Capacity WSpW Actual WSpW Utilisation of capacity in percent



		2Q 04	3Q 04	4Q 04	1Q 05	2Q 05	3Q 05	4Q 05	1Q 06	2Q 06	3Q 06	4Q 06	1Q 07	
TOTAL IC's	Capacity	Wafer-starts per week x 1000	1405.8	1454.3	1466.4	1508.3	1529.9	1580.1	1634.7	1702.8	1744.4	1808.0	1883.7	1892.0
		% growth re. preceding quarter	2.4	3.5	0.8	2.9	1.4	3.3	3.5	4.2	2.4	3.6	4.2	0.4
		% growth re. one year ago	7.5	8.6	9.4	9.9	8.8	8.7	11.5	12.9	14.0	14.4	15.2	11.1
	Actual Wafer-Starts	Wafer-starts per week x 1000	1340.9	1345.2	1260.9	1279.6	1362.5	1424.0	1500.4	1524.6	1591.2	1600.3	1628.3	1654.7
		% growth re. preceding quarter	4.6	0.3	-6.3	1.5	6.5	4.5	5.4	1.6	4.4	0.6	1.8	1.6
		% growth re. one year ago	19.3	13.2	2.7	-0.2	1.6	5.9	19.0	19.1	16.8	12.4	8.5	8.5
Utilisation	in percent (%)	95.4	92.5	86.0	84.8	89.1	90.1	91.8	89.5	91.2	88.5	86.4	87.5	

		2Q 06	3Q 06	4Q 06	1Q 07		
DISCRETES (6 inch equivs.)	Capacity	Wafer-starts per week x1000	220.8	233.8	242.9	252.9	308.9
		% growth re. preceding quarter		5.9	3.9	4.1	n.a.
		% growth re. one year ago					
	Actual Wafer-Starts	Wafer-starts per week x1000	206.0	220.4	228.8	231.0	275.6
		% growth re. preceding quarter		7.0	3.8	1.0	n.a.
		% growth re. one year ago					
Utilisation	in percent (%)	93.3	94.3	94.2	91.3	89.2	

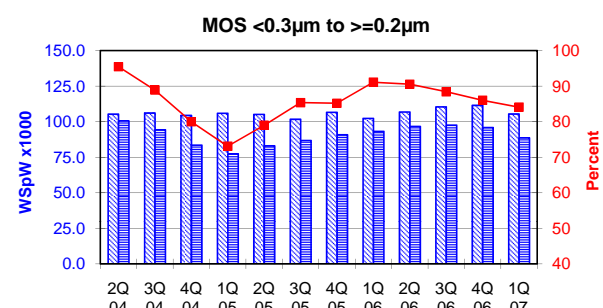
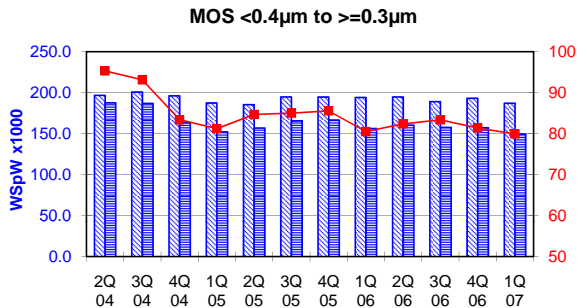
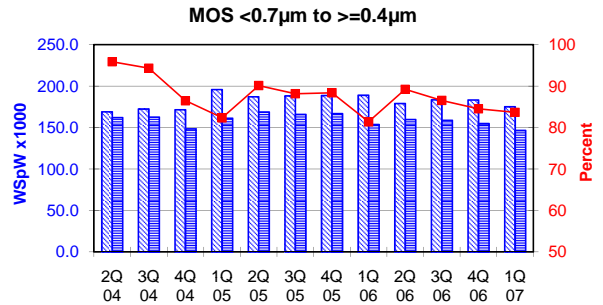
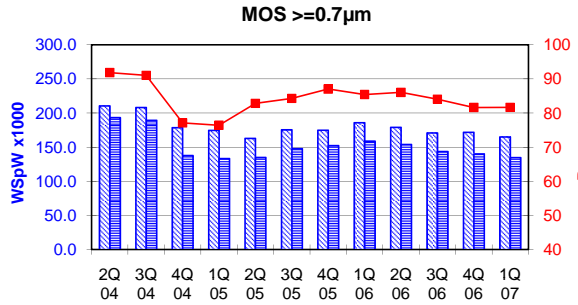
		2Q 06	3Q 06	4Q 06	1Q 07		
TOTAL Semiconductors	Capacity	Wafer-starts per week x1000	1827.2	1876.1	1944.8	2026.1	2065.9
		% growth re. preceding quarter		2.7	3.7	4.2	2.0
		% growth re. one year ago					
	Actual Wafer-Starts	Wafer-starts per week x1000	1640.6	1715.3	1729.1	1758.4	1809.9
		% growth re. preceding quarter		4.6	0.8	1.7	2.9
		% growth re. one year ago					
Utilisation	in percent (%)	89.8	91.4	88.9	86.8	87.6	

These statistics are based on data supplied by merchant SC manufacturers who together represent the great majority of the world's SC production.

All MOS data are expressed in 8 inch equivalent wafers.

WSpW = Wafer-Starts per Week.

Legends : Capacity WSpW Actual WSpW Utilisation of capacity in percent



		2Q 04	3Q 04	4Q 04	1Q 05	2Q 05	3Q 05	4Q 05	1Q 06	2Q 06	3Q 06	4Q 06	1Q 07	
MOS $\geq 0.7\mu\text{m}$	Capacity	Wafer-starts per week x1000	210.4	208.1	178.6	174.6	162.9	175.4	174.9	185.9	179.0	170.9	171.8	
		% growth re. preceding quarter	-1.3	-1.1	-14.2	-2.2	-6.7	7.7	-0.3	6.3	-3.7	-4.5	0.5	-4.0
		% growth re. one year ago	-4.9	-1.4	-15.6	-18.1	-22.6	-15.7	-2.1	6.5	9.9	-2.6	-1.8	-11.2
	Actual Wafer-Starts	Wafer-starts per week x1000	193.2	189.4	137.7	133.4	134.9	147.8	152.2	158.8	154.0	143.6	140.2	134.7
		% growth re. preceding quarter	3.0	-2.0	-27.3	-3.1	1.1	9.6	3.0	4.3	-3.0	-6.8	-2.4	-3.9
		% growth re. one year ago	-0.4	5.8	-25.1	-28.9	-30.2	-22.0	10.5	19.0	14.2	-2.8	-7.9	-15.2
Utilisation	in percent (%)	91.8	91.0	77.1	76.4	82.8	84.3	87.0	85.4	86.0	84.0	81.6	81.6	

		2Q 04	3Q 04	4Q 04	1Q 05	2Q 05	3Q 05	4Q 05	1Q 06	2Q 06	3Q 06	4Q 06	1Q 07	
MOS $< 0.7\mu\text{m}$ to $\geq 0.4\mu\text{m}$	Capacity	Wafer-starts per week x1000	169.0	172.4	171.5	195.9	187.2	188.2	188.7	189.0	179.0	183.5	183.3	
		% growth re. preceding quarter	3.0	2.0	-0.5	14.2	-4.4	0.5	0.3	0.2	-5.3	2.5	-0.1	-4.5
		% growth re. one year ago	5.3	5.4	7.3	19.5	10.8	9.2	10.0	-3.5	-4.4	-2.5	-2.9	-7.4
	Actual Wafer-Starts	Wafer-starts per week x1000	162.0	162.6	148.3	161.3	168.7	165.9	166.8	153.8	159.7	158.8	154.9	146.5
		% growth re. preceding quarter	7.4	0.4	-8.8	8.8	4.6	-1.7	0.5	-7.8	3.8	-0.6	-2.5	-5.4
		% growth re. one year ago	20.8	17.2	3.6	6.9	4.1	2.0	12.5	-4.6	-5.3	-4.3	-7.1	-4.7
Utilisation	in percent (%)	95.9	94.3	86.5	82.3	90.1	88.2	88.4	81.4	89.2	86.5	84.5	83.7	

		2Q 04	3Q 04	4Q 04	1Q 05	2Q 05	3Q 05	4Q 05	1Q 06	2Q 06	3Q 06	4Q 06	1Q 07
MOS $< 0.4\mu\text{m}$ to $\geq 0.3\mu\text{m}$	Capacity	Wafer-starts per week x1000	196.8	200.8	196.2	187.5	185.4	194.8	194.7	194.3	194.8	189.2	193.2
		% growth re. preceding quarter	1.7	2.0	-2.3	-4.4	-1.1	5.1	-0.1	-0.2	0.3	-2.9	2.1
		% growth re. one year ago	1.0	1.0	-1.0	-3.1	-5.8	-3.0	-0.8	3.6	5.1	-2.9	-0.8
	Actual Wafer-Starts	Wafer-starts per week x1000	187.6	187.0	163.6	152.3	157.0	165.6	166.6	156.4	160.5	157.7	157.2
		% growth re. preceding quarter	3.5	-0.3	-12.5	-6.9	3.1	5.5	0.6	-6.1	2.6	-1.7	-0.3
		% growth re. one year ago	22.0	15.9	-7.4	-15.9	-16.3	-11.4	1.8	2.7	2.2	-4.8	-5.6
Utilisation	in percent (%)	95.3	93.1	83.4	81.2	84.7	85.0	85.6	80.5	82.4	83.4	81.4	

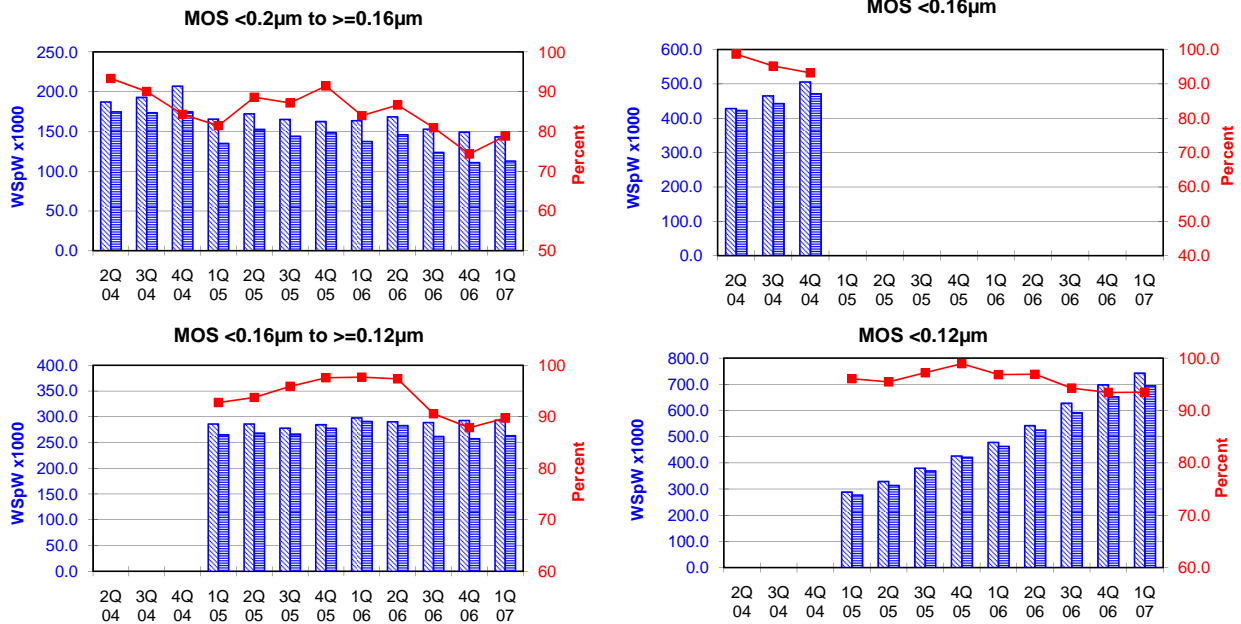
		2Q 04	3Q 04	4Q 04	1Q 05	2Q 05	3Q 05	4Q 05	1Q 06	2Q 06	3Q 06	4Q 06	1Q 07
MOS $< 0.3\mu\text{m}$ to $\geq 0.2\mu\text{m}$	Capacity	Wafer-starts per week x1000	105.3	106.1	104.4	105.9	105.1	101.7	106.6	102.3	106.8	110.4	111.5
		% growth re. preceding quarter	-3.9	0.8	-1.6	1.4	-0.8	-3.2	4.8	-4.0	4.4	3.4	1.0
		% growth re. one year ago	-5.3	-0.6	-5.5	-3.4	-0.2	-4.1	2.1	-3.4	1.6	8.6	4.6
	Actual Wafer-Starts	Wafer-starts per week x1000	100.5	94.3	83.5	77.4	83.0	86.8	90.8	93.2	96.7	97.6	95.9
		% growth re. preceding quarter	0.7	-6.2	-11.5	-7.3	7.2	4.6	4.6	2.6	3.8	0.9	-1.7
		% growth re. one year ago	9.2	-3.2	-13.6	-22.4	-17.4	-8.0	8.7	20.4	16.5	12.4	5.6
Utilisation	in percent (%)	95.4	88.9	80.0	73.1	79.0	85.3	85.2	91.1	90.5	88.4	86.0	

These statistics are based on data supplied by merchant SC manufacturers who together represent the great majority of the world's SC production.

All MOS data are expressed in 8 inch equivalent wafers.

WSpW = Wafer-Starts per Week.

Legends : Capacity WSpW Actual WSpW Utilisation of capacity in percent



		2Q 04	3Q 04	4Q 04	1Q 05	2Q 05	3Q 05	4Q 05	1Q 06	2Q 06	3Q 06	4Q 06	1Q 07	
MOS <0.2µm to >=0.16µm	Capacity	Wafer-starts per week x1000	187.2	192.9	207.1	165.6	172.2	165.2	162.5	163.6	168.4	152.9	149.2	
		% growth re. preceding quarter	-10.6	3.0	7.4	-20.0	4.0	-4.1	-1.6	0.7	2.9	-9.2	-2.4	
		% growth re. one year ago	-14.0	-14.7	-0.8	-20.9	-8.0	-14.4	-21.5	-1.2	-2.2	-7.4	-8.2	-12.5
	Actual Wafer-Starts	Wafer-starts per week x1000	174.7	173.7	174.6	134.9	152.6	144.0	148.6	137.4	145.9	123.8	110.9	112.9
		% growth re. preceding quarter	-12.0	-0.6	0.5	-22.7	13.1	-5.6	3.2	-7.5	6.2	-15.1	-10.4	1.8
		% growth re. one year ago	-5.1	-16.2	-10.8	-32.1	-12.7	-17.1	-14.9	1.9	-4.4	-14.0	-25.4	-17.8
Utilisation	in percent (%)	93.3	90.0	84.3	81.5	88.6	87.2	91.4	84.0	86.6	81.0	74.3	78.8	

		2Q 04	3Q 04	4Q 04	1Q 05	2Q 05	3Q 05	4Q 05	1Q 06	2Q 06	3Q 06	4Q 06	1Q 07
MOS <0.16µm	Capacity	Wafer-starts per week x 1000	428.3	465.0	505.6								
		% growth re. preceding quarter	14.0	8.6	8.7								
		% growth re. one year ago	47.0	44.2	45.7								
	Actual Wafer-Starts	Wafer-starts per week x1000	422.6	442.6	471.3								
		% growth re. preceding quarter	13.6	4.7	6.5								
		% growth re. one year ago	53.1	41.8	38.0								
Utilisation	in percent (%)	98.7	95.2	93.2									

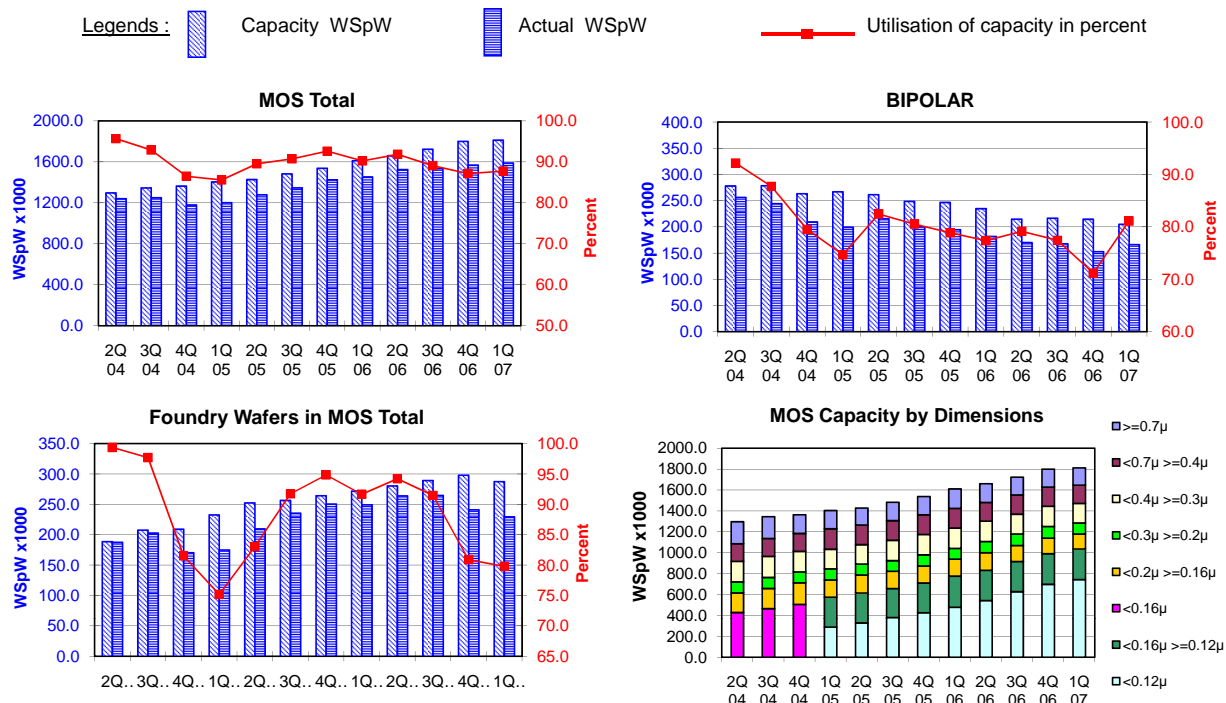
		2Q 04	3Q 04	4Q 04	1Q 05	2Q 05	3Q 05	4Q 05	1Q 06	2Q 06	3Q 06	4Q 06	1Q 07
MOS <0.16µm to >=0.12µm	Capacity	Wafer-starts per week x1000			285.9	286.0	277.9	284.6	297.8	290.4	288.8	292.9	293.3
		% growth re. preceding quarter				0.0	-2.8	2.4	4.6	-2.5	-0.6	1.4	0.1
		% growth re. one year ago							4.2	1.5	3.9	2.9	-1.5
	Actual Wafer-Starts	Wafer-starts per week x1000			265.2	268.1	266.5	277.7	290.9	282.7	261.6	257.4	263.2
		% growth re. preceding quarter				1.1	-0.6	4.2	4.8	-2.8	-7.5	-1.6	2.3
		% growth re. one year ago							9.7	5.4	-1.8	-7.3	-9.5
Utilisation	in percent (%)			92.8	93.7	95.9	97.6	97.7	97.3	90.6	87.9	89.7	

		2Q 04	3Q 04	4Q 04	1Q 05	2Q 05	3Q 05	4Q 05	1Q 06	2Q 06	3Q 06	4Q 06	1Q 07
MOS <0.12µm	Capacity	Wafer-starts per week x1000			288.5	328.8	379.7	426.2	478.1	542.0	627.6	697.9	742.6
		% growth re. preceding quarter				14.0	15.5	12.2	12.2	13.4	15.8	11.2	6.4
		% growth re. one year ago							65.7	64.8	65.3	63.7	55.3
	Actual Wafer-Starts	Wafer-starts per week x1000			277.1	313.8	369.1	421.6	463.0	525.2	591.6	652.1	694.2
		% growth re. preceding quarter				13.2	17.6	14.2	9.8	13.4	12.6	10.2	6.5
		% growth re. one year ago							67.1	67.4	60.3	54.7	49.9
Utilisation	in percent (%)			96.0	95.4	97.2	98.9	96.8	96.9	94.3	93.4	93.5	

These statistics are based on data supplied by merchant SC manufacturers who together represent the great majority of the world's SC production.

All MOS data are expressed in 8 inch equivalent wafers. Bipolar data are expressed in 5 inch equivalent wafers.

WSpW = Wafer-Starts per Week.



		2Q 04	3Q 04	4Q 04	1Q 05	2Q 05	3Q 05	4Q 05	1Q 06	2Q 06	3Q 06	4Q 06	1Q 07
MOS Total	Capacity	Wafer-starts per week x 1000	1297.0	1345.3	1363.4	1403.9	1427.6	1482.9	1538.2	1611.0	1660.4	1723.3	1799.8
		% growth re. preceding quarter	2.5	3.7	1.3	3.0	1.7	3.9	3.7	4.7	3.1	3.8	4.4
		% growth re. one year ago	8.4	9.5	10.3	11.0	10.1	10.2	12.8	14.8	16.3	16.2	17.0
	Actual Wafer-Starts	Wafer-starts per week x1000	1240.6	1249.6	1179.0	1201.6	1278.1	1345.7	1424.3	1453.5	1524.7	1534.7	1568.6
		% growth re. preceding quarter	4.3	0.7	-5.6	1.9	6.4	5.3	5.8	2.1	4.9	0.7	2.2
	% growth re. one year ago	20.0	14.0	3.6	1.0	3.0	7.7	20.8	21.0	19.3	14.0	10.1	
	Utilisation	in percent (%)											
		95.7	92.9	86.5	85.6	89.5	90.7	92.6	90.2	91.8	89.1	87.2	87.7

		2Q 04	3Q 04	4Q 04	1Q 05	2Q 05	3Q 05	4Q 05	1Q 06	2Q 06	3Q 06	4Q 06	1Q 07
BIPOLAR (5 inch equivs.)	Capacity	Wafer-starts per week x1000	278.2	278.8	263.5	267.0	261.7	248.7	246.8	234.9	214.9	216.7	214.7
		% growth re. preceding quarter	1.5	0.2	-5.5	1.3	-2.0	-5.0	-0.8	-4.8	-8.5	0.8	-0.9
		% growth re. one year ago	-2.1	-1.7	-1.2	-2.6	-5.9	-10.8	-6.3	-12.0	-17.9	-12.9	-13.0
	Actual Wafer-Starts	Wafer-starts per week x1000	256.4	244.6	209.5	199.4	215.8	200.3	194.7	181.8	170.1	167.8	152.8
		% growth re. preceding quarter	9.4	-4.6	-14.3	-4.8	8.2	-7.2	-2.8	-6.6	-6.4	-1.4	-8.9
	% growth re. one year ago	11.1	3.7	-8.7	-14.9	-15.8	-18.1	-7.1	-8.8	-21.2	-16.2	-21.5	
	Utilisation	in percent (%)											
		92.2	87.7	79.5	74.7	82.5	80.5	78.9	77.4	79.2	77.4	71.2	81.1

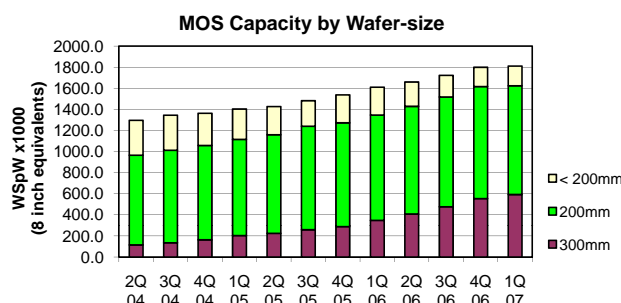
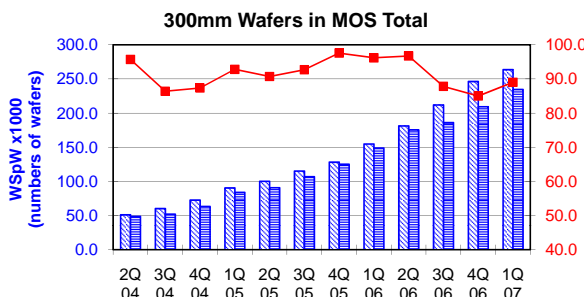
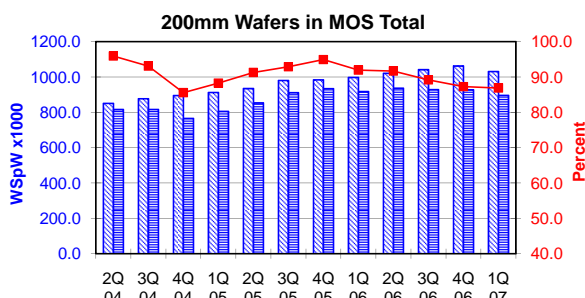
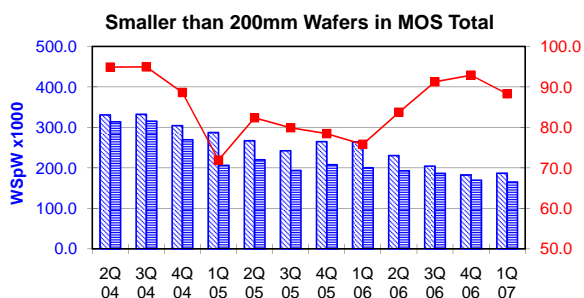
		2Q 04	3Q 04	4Q 04	1Q 05	2Q 05	3Q 05	4Q 05	1Q 06	2Q 06	3Q 06	4Q 06	1Q 07
Foundry Wafers in MOS Total	Capacity	Wafer-starts per week x1000	188.7	207.6	209.1	232.7	252.4	256.7	264.2	272.0	280.3	289.4	298.1
		% growth re. preceding quarter	10.0	10.0	0.7	11.3	8.5	1.7	2.9	3.0	3.1	3.2	3.0
		% growth re. one year ago	27.8	33.7	28.4	35.6	33.8	23.7	26.4	16.9	11.1	12.7	12.8
	Actual Wafer-Starts	Wafer-starts per week x1000	187.5	202.8	170.5	174.9	209.6	235.5	250.6	249.3	264.1	264.7	241.1
		% growth re. preceding quarter	10.7	8.2	-15.9	2.6	19.8	12.4	6.4	-0.5	5.9	0.2	-8.9
	% growth re. one year ago	46.0	41.9	6.2	3.2	11.8	16.1	47.0	42.5	26.0	12.4	-3.8	
	Utilisation	in percent (%)											
		99.4	97.7	81.5	75.2	83.0	91.7	94.9	91.7	94.2	91.5	80.9	79.8

These statistics are based on data supplied by merchant SC manufacturers who together represent the great majority of the world's SC production.

All MOS data are expressed in 8 inch equivalent wafers, except for the 300mm wafer data where annotated as "numbers of wafers".

WSpW = Wafer-Starts per Week.

Legends: Capacity WSpW Actual WSpW Utilisation of capacity in percent



		2Q 04	3Q 04	4Q 04	1Q 05	2Q 05	3Q 05	4Q 05	1Q 06	2Q 06	3Q 06	4Q 06	1Q 07	
< 200mm Wafers in MOS Total	Capacity	Wafer-starts per week x 1000	331.0	332.5	304.5	287.4	267.3	242.6	265.0	264.4	230.7	204.5	182.7	187.2
		% growth re. preceding quarter	-12.0	0.5	-8.4	-5.6	-7.0	-9.2	9.3	-0.2	-12.8	-11.3	-10.7	2.4
		% growth re. one year ago	n.a.	n.a.	n.a.	-23.6	-19.3	-27.1	-13.0	-8.0	-13.7	-15.7	-31.1	-29.2
	Actual Wafer-Starts	Wafer-starts per week x1000	314.2	315.8	269.9	206.7	220.2	193.9	208.0	200.5	193.1	186.7	169.7	165.3
		% growth re. preceding quarter	-7.2	0.5	-14.5	-23.4	6.5	-11.9	7.3	-3.6	-3.7	-3.4	-9.1	-2.6
		% growth re. one year ago	n.a.	n.a.	n.a.	-39.0	-29.9	-38.6	-22.9	-3.0	-12.3	-3.7	-18.4	-17.5
Utilisation	in percent (%)	94.9	95.0	88.6	71.9	82.4	79.9	78.5	75.8	83.7	91.3	92.9	88.3	

		2Q 04	3Q 04	4Q 04	1Q 05	2Q 05	3Q 05	4Q 05	1Q 06	2Q 06	3Q 06	4Q 06	1Q 07	
200mm wafers in MOS Total	Capacity	Wafer-starts per week x1000	850.8	877.1	895.3	912.9	934.9	980.9	984.5	998.1	1021.6	1041.8	1062.7	1031.3
		% growth re. preceding quarter	2.6	3.1	2.1	2.0	2.4	4.9	0.4	1.4	2.4	2.0	2.0	-3.0
		% growth re. one year ago	8.9	6.4	9.5	10.1	9.9	11.8	10.0	9.3	9.3	6.2	7.9	3.3
	Actual Wafer-Starts	Wafer-starts per week x1000	816.2	816.6	766.2	805.9	853.4	911.3	934.6	917.8	936.7	929.1	927.5	896.1
		% growth re. preceding quarter	2.5	0.0	-6.2	5.2	5.9	6.8	2.6	-1.8	2.1	-0.8	-0.2	-3.4
		% growth re. one year ago	18.7	9.7	0.3	1.2	4.6	11.6	22.0	13.9	9.8	2.0	-0.8	-2.4
Utilisation	in percent (%)	95.9	93.1	85.6	88.3	91.3	92.9	94.9	92.0	91.7	89.2	87.3	86.9	

		2Q 04	3Q 04	4Q 04	1Q 05	2Q 05	3Q 05	4Q 05	1Q 06	2Q 06	3Q 06	4Q 06	1Q 07	
300mm wafers in MOS Total	Capacity	WSpW x 1000 expressed in 8 inch equivalent wafers	115.2	135.7	163.6	203.6	225.5	259.4	288.7	348.5	408.2	477.0	554.4	593.3
		WSpW x 1000 expressed in numbers of wafers	51.2	60.3	72.7	90.5	100.2	115.3	128.3	154.9	181.4	212.0	246.4	263.7
		% growth re. preceding quarter	92.5	17.8	20.6	24.5	10.7	15.1	11.3	20.7	17.1	16.9	16.2	7.0
		% growth re. one year ago				240.2	95.7	91.2	76.5	71.2	81.0	83.9	92.0	70.2
	Actual Wafer-Starts	WSpW x 1000 expressed in 8 inch equivalent wafers	110.3	117.2	142.9	189.0	204.5	240.5	281.7	335.3	394.9	419.0	471.4	528.3
		WSpW x 1000 expressed in numbers of wafers	49.0	52.1	63.5	84.0	90.9	106.9	125.2	149.0	175.5	186.2	209.5	234.8
		% growth re. preceding quarter	100.0	6.3	21.9	32.3	8.2	17.6	17.1	19.0	17.8	6.1	12.5	12.1
		% growth re. one year ago				242.9	85.5	105.2	97.2	77.4	93.1	74.2	67.3	57.6
	Utilisation	in percent (%)	95.7	86.4	87.3	92.8	90.7	92.7	97.6	96.2	96.7	87.8	85.0	89.0

These statistics are based on data supplied by merchant SC manufacturers who together represent the great majority of the world's SC production.