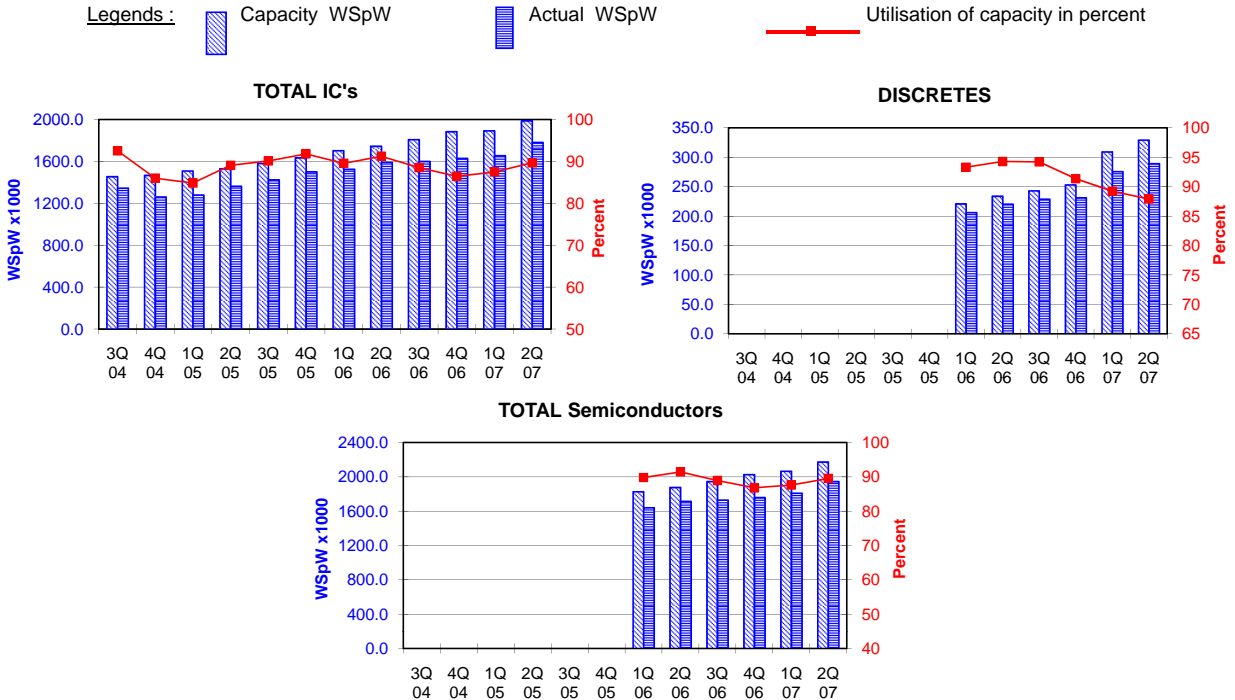


TOTAL IC's and TOTAL Semiconductors data are expressed in 8 inch equivalent wafers. DISCRETES data are expressed in 6 inch equivalent wafers. "TOTAL IC's" include Bipolar data, which were converted for this purpose from 5 inch to 8 inch equivalent wafers by the factor 0.391. "TOTAL Semiconductors" include DISCRETES data, which were converted for this purpose from 6 inch to 8 inch equivalent wafers by the factor 0.563.

WSpW = Wafer-Starts per Week.



		3Q 04	4Q 04	1Q 05	2Q 05	3Q 05	4Q 05	1Q 06	2Q 06	3Q 06	4Q 06	1Q 07	2Q 07	
TOTAL IC's	Capacity	Wafer-starts per week x 1000	1454.3	1466.4	1508.3	1529.9	1580.1	1634.7	1702.8	1744.4	1808.0	1883.7	1892.0	1987.3
		% growth re. preceding quarter	3.5	0.8	2.9	1.4	3.3	3.5	4.2	2.4	3.6	4.2	0.4	5.0
		% growth re. one year ago	8.6	9.4	9.9	8.8	8.7	11.5	12.9	14.0	14.4	15.2	11.1	13.9
	Actual Wafer-Starts	Wafer-starts per week x 1000	1345.2	1260.9	1279.6	1362.5	1424.0	1500.4	1524.6	1591.2	1600.3	1628.3	1654.7	1781.9
		% growth re. preceding quarter	0.3	-6.3	1.5	6.5	4.5	5.4	1.6	4.4	0.6	1.8	1.6	7.7
		% growth re. one year ago	13.2	2.7	-0.2	1.6	5.9	19.0	19.1	16.8	12.4	8.5	8.5	12.0
Utilisation	in percent (%)	92.5	86.0	84.8	89.1	90.1	91.8	89.5	91.2	88.5	86.4	87.5	89.7	

		3Q 04	4Q 04	1Q 05	2Q 05	3Q 05	4Q 05	1Q 06	2Q 06	3Q 06	4Q 06	1Q 07	2Q 07
DISCRETES (6 inch equivs.)	Capacity	Wafer-starts per week x1000						220.8	233.8	242.9	252.9	308.9	329.0
		% growth re. preceding quarter							5.9	3.9	4.1	n.a.	6.5
		% growth re. one year ago										n.a.	n.a.
	Actual Wafer-Starts	Wafer-starts per week x1000						206.0	220.4	228.8	231.0	275.6	289.2
		% growth re. preceding quarter							7.0	3.8	1.0	n.a.	4.9
		% growth re. one year ago										n.a.	n.a.
Utilisation	in percent (%)						93.3	94.3	94.2	91.3	89.2	87.9	

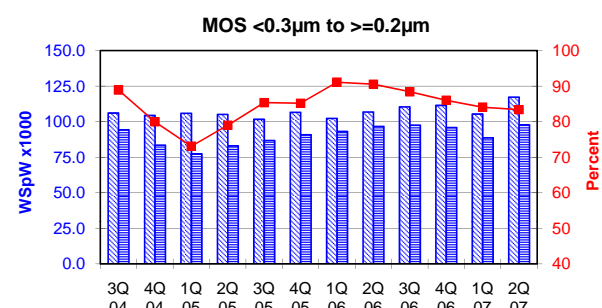
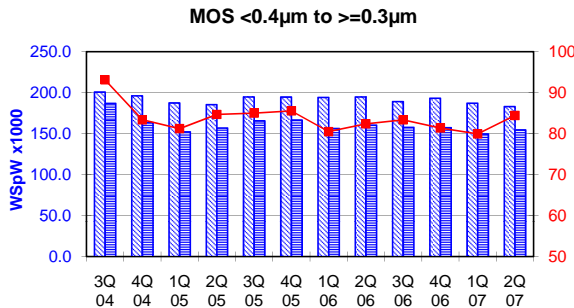
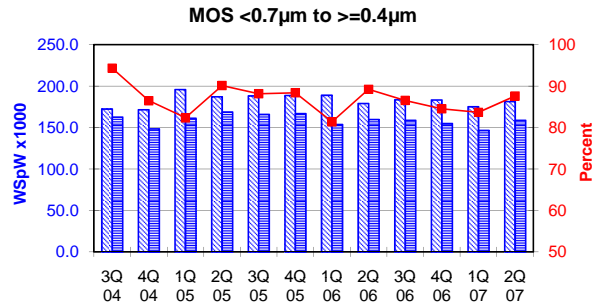
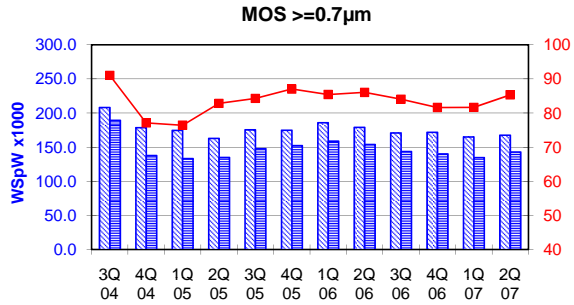
		3Q 04	4Q 04	1Q 05	2Q 05	3Q 05	4Q 05	1Q 06	2Q 06	3Q 06	4Q 06	1Q 07	2Q 07
TOTAL Semiconductors	Capacity	Wafer-starts per week x1000						1827.2	1876.1	1944.8	2026.1	2065.9	2172.5
		% growth re. preceding quarter							2.7	3.7	4.2	2.0	5.2
		% growth re. one year ago											
	Actual Wafer-Starts	Wafer-starts per week x1000						1640.6	1715.3	1729.1	1758.4	1809.9	1944.7
		% growth re. preceding quarter							4.6	0.8	1.7	2.9	7.5
		% growth re. one year ago											
Utilisation	in percent (%)						89.8	91.4	88.9	86.8	87.6	89.5	

These statistics are based on data supplied by merchant SC manufacturers who together represent the great majority of the world's SC production.

All MOS data are expressed in 8 inch equivalent wafers.

WSpW = Wafer-Starts per Week.

Legends : Capacity WSpW Actual WSpW Utilisation of capacity in percent



		3Q 04	4Q 04	1Q 05	2Q 05	3Q 05	4Q 05	1Q 06	2Q 06	3Q 06	4Q 06	1Q 07	2Q 07	
MOS $\geq 0.7\mu\text{m}$	Capacity	Wafer-starts per week x1000	208.1	178.6	174.6	162.9	175.4	174.9	185.9	179.0	170.9	171.8	165.0	167.6
		% growth re. preceding quarter	-1.1	-14.2	-2.2	-6.7	7.7	-0.3	6.3	-3.7	-4.5	0.5	-4.0	1.6
		% growth re. one year ago	-1.4	-15.6	-18.1	-22.6	-15.7	-2.1	6.5	9.9	-2.6	-1.8	-11.2	-6.4
	Actual Wafer-Starts	Wafer-starts per week x1000	189.4	137.7	133.4	134.9	147.8	152.2	158.8	154.0	143.6	140.2	134.7	143.0
		% growth re. preceding quarter	-2.0	-27.3	-3.1	1.1	9.6	3.0	4.3	-3.0	-6.8	-2.4	-3.9	6.2
		% growth re. one year ago	5.8	-25.1	-28.9	-30.2	-22.0	10.5	19.0	14.2	-2.8	-7.9	-15.2	-7.1
Utilisation	in percent (%)	91.0	77.1	76.4	82.8	84.3	87.0	85.4	86.0	84.0	81.6	81.6	85.3	

		3Q 04	4Q 04	1Q 05	2Q 05	3Q 05	4Q 05	1Q 06	2Q 06	3Q 06	4Q 06	1Q 07	2Q 07	
MOS $< 0.7\mu\text{m}$ to $\geq 0.4\mu\text{m}$	Capacity	Wafer-starts per week x1000	172.4	171.5	195.9	187.2	188.2	188.7	189.0	179.0	183.5	183.3	175.1	181.3
		% growth re. preceding quarter	2.0	-0.5	14.2	-4.4	0.5	0.3	0.2	-5.3	2.5	-0.1	-4.5	3.5
		% growth re. one year ago	5.4	7.3	19.5	10.8	9.2	10.0	-3.5	-4.4	-2.5	-2.9	-7.4	1.3
	Actual Wafer-Starts	Wafer-starts per week x1000	162.6	148.3	161.3	168.7	165.9	166.8	153.8	159.7	158.8	154.9	146.5	158.8
		% growth re. preceding quarter	0.4	-8.8	8.8	4.6	-1.7	0.5	-7.8	3.8	-0.6	-2.5	-5.4	8.4
		% growth re. one year ago	17.2	3.6	6.9	4.1	2.0	12.5	-4.6	-5.3	-4.3	-7.1	-4.7	-0.6
Utilisation	in percent (%)	94.3	86.5	82.3	90.1	88.2	88.4	81.4	89.2	86.5	84.5	83.7	87.6	

		3Q 04	4Q 04	1Q 05	2Q 05	3Q 05	4Q 05	1Q 06	2Q 06	3Q 06	4Q 06	1Q 07	2Q 07	
MOS $< 0.4\mu\text{m}$ to $\geq 0.3\mu\text{m}$	Capacity	Wafer-starts per week x1000	200.8	196.2	187.5	185.4	194.8	194.7	194.3	194.8	189.2	193.2	187.2	183.1
		% growth re. preceding quarter	2.0	-2.3	-4.4	-1.1	5.1	-0.1	-0.2	0.3	-2.9	2.1	-3.1	-2.2
		% growth re. one year ago	1.0	-1.0	-3.1	-5.8	-3.0	-0.8	3.6	5.1	-2.9	-0.8	-3.7	-6.0
	Actual Wafer-Starts	Wafer-starts per week x1000	187.0	163.6	152.3	157.0	165.6	166.6	156.4	160.5	157.7	157.2	149.6	154.6
		% growth re. preceding quarter	-0.3	-12.5	-6.9	3.1	5.5	0.6	-6.1	2.6	-1.7	-0.3	-4.8	3.3
		% growth re. one year ago	15.9	-7.4	-15.9	-16.3	-11.4	1.8	2.7	2.2	-4.8	-5.6	-4.3	-3.7
Utilisation	in percent (%)	93.1	83.4	81.2	84.7	85.0	85.6	80.5	82.4	83.4	81.4	79.9	84.4	

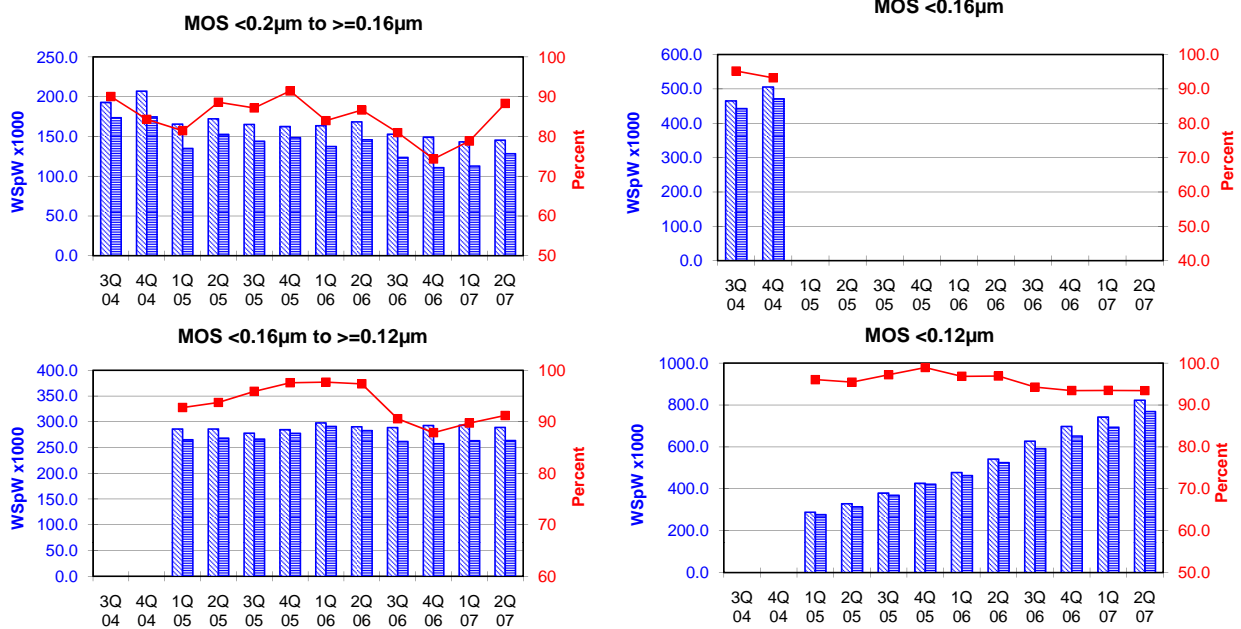
		3Q 04	4Q 04	1Q 05	2Q 05	3Q 05	4Q 05	1Q 06	2Q 06	3Q 06	4Q 06	1Q 07	2Q 07	
MOS $< 0.3\mu\text{m}$ to $\geq 0.2\mu\text{m}$	Capacity	Wafer-starts per week x1000	106.1	104.4	105.9	105.1	101.7	106.6	102.3	106.8	110.4	111.5	105.4	117.3
		% growth re. preceding quarter	0.8	-1.6	1.4	-0.8	-3.2	4.8	-4.0	4.4	3.4	1.0	-5.5	11.3
		% growth re. one year ago	-0.6	-5.5	-3.4	-0.2	-4.1	2.1	-3.4	1.6	8.6	4.6	3.0	9.8
	Actual Wafer-Starts	Wafer-starts per week x1000	94.3	83.5	77.4	83.0	86.8	90.8	93.2	96.7	97.6	95.9	88.6	97.8
		% growth re. preceding quarter	-6.2	-11.5	-7.3	7.2	4.6	4.6	2.6	3.8	0.9	-1.7	-7.6	10.4
		% growth re. one year ago	-3.2	-13.6	-22.4	-17.4	-8.0	8.7	20.4	16.5	12.4	5.6	-4.9	1.1
Utilisation	in percent (%)	88.9	80.0	73.1	79.0	85.3	85.2	91.1	90.5	88.4	86.0	84.1	83.4	

These statistics are based on data supplied by merchant SC manufacturers who together represent the great majority of the world's SC production.

All MOS data are expressed in 8 inch equivalent wafers.

WSpW = Wafer-Starts per Week.

Legends : Capacity WSpW Actual WSpW Utilisation of capacity in percent



		3Q 04	4Q 04	1Q 05	2Q 05	3Q 05	4Q 05	1Q 06	2Q 06	3Q 06	4Q 06	1Q 07	2Q 07	
MOS <0.2µm to ≥0.16µm	Capacity	Wafer-starts per week x1000	192.9	207.1	165.6	172.2	165.2	162.5	163.6	168.4	152.9	149.2	143.2	145.4
		% growth re. preceding quarter	3.0	7.4	-20.0	4.0	-4.1	-1.6	0.7	2.9	-9.2	-2.4	-4.0	1.5
		% growth re. one year ago	-14.7	-0.8	-20.9	-8.0	-14.4	-21.5	-1.2	-2.2	-7.4	-8.2	-12.5	-13.7
	Actual Wafer-Starts	Wafer-starts per week x1000	173.7	174.6	134.9	152.6	144.0	148.6	137.4	145.9	123.8	110.9	112.9	128.4
		% growth re. preceding quarter	-0.6	0.5	-22.7	13.1	-5.6	3.2	-7.5	6.2	-15.1	-10.4	1.8	13.7
		% growth re. one year ago	-16.2	-10.8	-32.1	-12.7	-17.1	-14.9	1.9	-4.4	-14.0	-25.4	-17.8	-12.0
Utilisation	in percent (%)	90.0	84.3	81.5	88.6	87.2	91.4	84.0	86.6	81.0	74.3	78.8	88.3	

		3Q 04	4Q 04	1Q 05	2Q 05	3Q 05	4Q 05	1Q 06	2Q 06	3Q 06	4Q 06	1Q 07	2Q 07	
MOS <0.16µm	Capacity	Wafer-starts per week x 1000	465.0	505.6										
		% growth re. preceding quarter	8.6	8.7										
		% growth re. one year ago	44.2	45.7										
	Actual Wafer-Starts	Wafer-starts per week x1000	442.6	471.3										
		% growth re. preceding quarter	4.7	6.5										
		% growth re. one year ago	41.8	38.0										
Utilisation	in percent (%)	95.2	93.2											

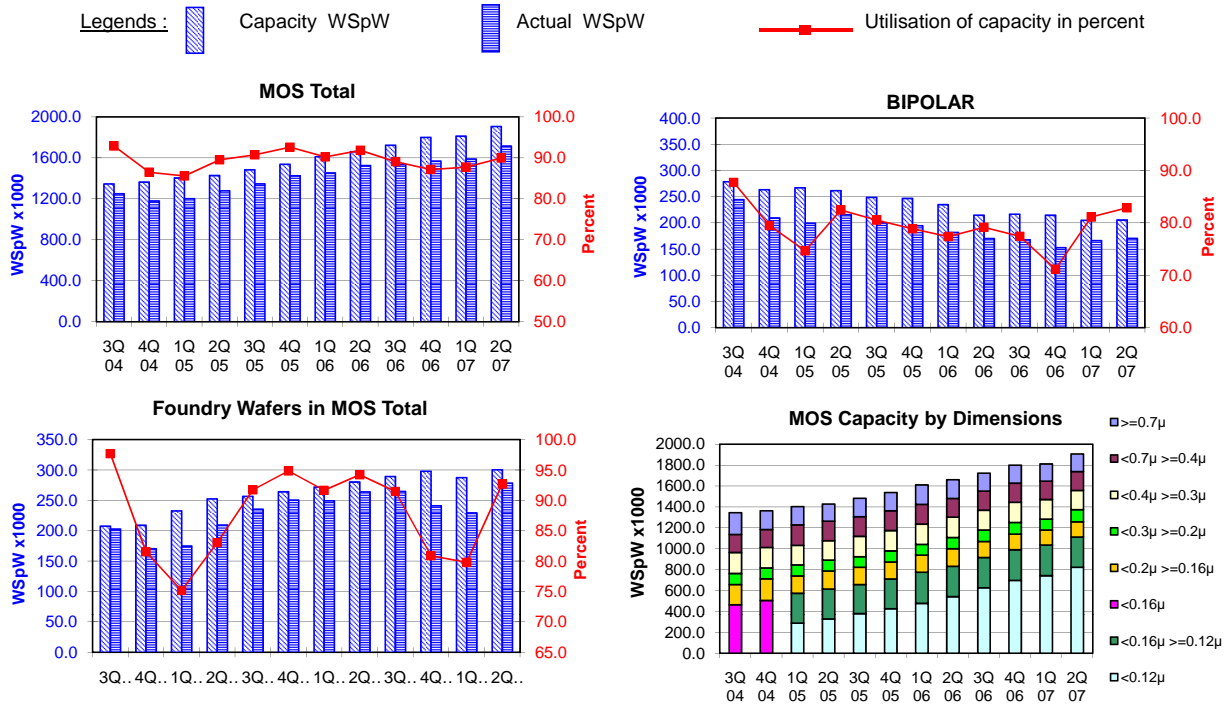
		3Q 04	4Q 04	1Q 05	2Q 05	3Q 05	4Q 05	1Q 06	2Q 06	3Q 06	4Q 06	1Q 07	2Q 07	
MOS <0.16µm to ≥0.12µm	Capacity	Wafer-starts per week x1000			285.9	286.0	277.9	284.6	297.8	290.4	288.8	292.9	293.3	289.1
		% growth re. preceding quarter				0.0	-2.8	2.4	4.6	-2.5	-0.6	1.4	0.1	-1.4
		% growth re. one year ago							4.2	1.5	3.9	2.9	-1.5	-0.4
	Actual Wafer-Starts	Wafer-starts per week x1000			265.2	268.1	266.5	277.7	290.9	282.7	261.6	257.4	263.2	263.7
		% growth re. preceding quarter				1.1	-0.6	4.2	4.8	-2.8	-7.5	-1.6	2.3	0.2
		% growth re. one year ago							9.7	5.4	-1.8	-7.3	-9.5	-6.7
Utilisation	in percent (%)			92.8	93.7	95.9	97.6	97.7	97.3	90.6	87.9	89.7	91.2	

		3Q 04	4Q 04	1Q 05	2Q 05	3Q 05	4Q 05	1Q 06	2Q 06	3Q 06	4Q 06	1Q 07	2Q 07	
MOS <0.12µm	Capacity	Wafer-starts per week x1000			288.5	328.8	379.7	426.2	478.1	542.0	627.6	697.9	742.6	823.1
		% growth re. preceding quarter				14.0	15.5	12.2	12.2	13.4	15.8	11.2	6.4	10.8
		% growth re. one year ago							65.7	64.8	65.3	63.7	55.3	51.9
	Actual Wafer-Starts	Wafer-starts per week x1000			277.1	313.8	369.1	421.6	463.0	525.2	591.6	652.1	694.2	769.0
		% growth re. preceding quarter				13.2	17.6	14.2	9.8	13.4	12.6	10.2	6.5	10.8
		% growth re. one year ago							67.1	67.4	60.3	54.7	49.9	46.4
Utilisation	in percent (%)			96.0	95.4	97.2	98.9	96.8	96.9	94.3	93.4	93.5	93.4	

These statistics are based on data supplied by merchant SC manufacturers who together represent the great majority of the world's SC production.

All MOS data are expressed in 8 inch equivalent wafers. Bipolar data are expressed in 5 inch equivalent wafers.

WSpW = Wafer-Starts per Week.



		3Q 04	4Q 04	1Q 05	2Q 05	3Q 05	4Q 05	1Q 06	2Q 06	3Q 06	4Q 06	1Q 07	2Q 07		
MOS Total	<b>Capacity</b>	Wafer-starts per week x 1000	1345.3	1363.4	1403.9	1427.6	1482.9	1538.2	1611.0	1660.4	1723.3	1799.8	1811.8	1906.9	
		% growth re. preceding quarter	3.7	1.3	3.0	1.7	3.9	3.7	4.7	3.1	3.8	4.4	0.7	5.2	
		% growth re. one year ago	9.5	10.3	11.0	10.1	10.2	12.8	14.8	16.3	16.2	17.0	12.5	14.8	
	<b>Actual Wafer-Starts</b>	Wafer-starts per week x1000	1249.6	1179.0	1201.6	1278.1	1345.7	1424.3	1453.5	1524.7	1534.7	1568.6	1589.7	1715.3	
		% growth re. preceding quarter	0.7	-5.6	1.9	6.4	5.3	5.8	2.1	4.9	0.7	2.2	1.3	7.9	
	% growth re. one year ago	14.0	3.6	1.0	3.0	7.7	20.8	21.0	19.3	14.0	10.1	9.4	12.5		
	<b>Utilisation</b>	in percent (%)		92.9	86.5	85.6	89.5	90.7	92.6	90.2	91.8	89.1	87.2	87.7	90.0

BIPOLAR (5 inch equivs.)	<b>Capacity</b>	Wafer-starts per week x1000	278.8	263.5	267.0	261.7	248.7	246.8	234.9	214.9	216.7	214.7	205.0	205.6	
		% growth re. preceding quarter	0.2	-5.5	1.3	-2.0	-5.0	-0.8	-4.8	-8.5	0.8	-0.9	-4.5	0.3	
		% growth re. one year ago	-1.7	-1.2	-2.6	-5.9	-10.8	-6.3	-12.0	-17.9	-12.9	-13.0	-12.7	-4.3	
	<b>Actual Wafer-Starts</b>	Wafer-starts per week x1000	244.6	209.5	199.4	215.8	200.3	194.7	181.8	170.1	167.8	152.8	166.3	170.4	
		% growth re. preceding quarter	-4.6	-14.3	-4.8	8.2	-7.2	-2.8	-6.6	-6.4	-1.4	-8.9	8.8	2.5	
	% growth re. one year ago	3.7	-8.7	-14.9	-15.8	-18.1	-7.1	-8.8	-21.2	-16.2	-21.5	-8.5	0.2		
	<b>Utilisation</b>	in percent (%)		87.7	79.5	74.7	82.5	80.5	78.9	77.4	79.2	77.4	71.2	81.1	82.9

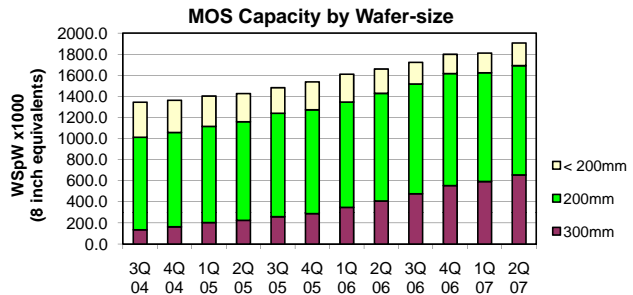
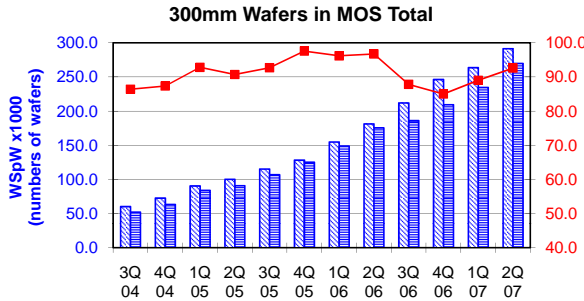
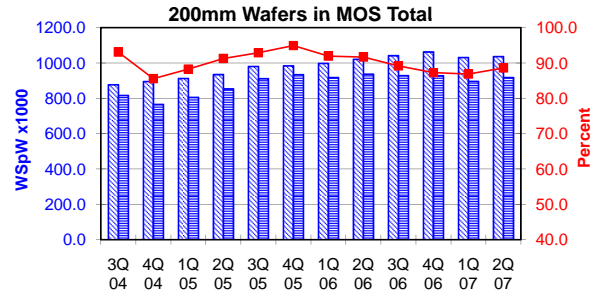
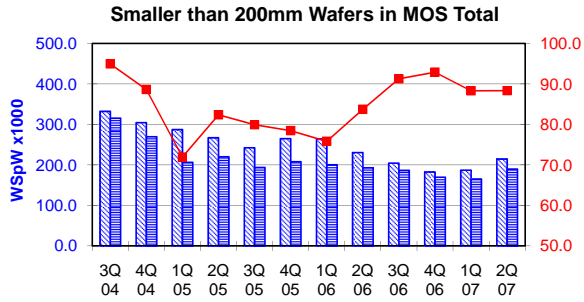
Foundry Wafers in MOS Total	<b>Capacity</b>	Wafer-starts per week x1000	207.6	209.1	232.7	252.4	256.7	264.2	272.0	280.3	289.4	298.1	287.5	300.4	
		% growth re. preceding quarter	10.0	0.7	11.3	8.5	1.7	2.9	3.0	3.1	3.2	3.0	-3.6	4.5	
		% growth re. one year ago	33.7	28.4	35.6	33.8	23.7	26.4	16.9	11.1	12.7	12.8	5.7	7.2	
	<b>Actual Wafer-Starts</b>	Wafer-starts per week x1000	202.8	170.5	174.9	209.6	235.5	250.6	249.3	264.1	264.7	241.1	229.4	278.4	
		% growth re. preceding quarter	8.2	-15.9	2.6	19.8	12.4	6.4	-0.5	5.9	0.2	-8.9	-4.9	21.4	
	% growth re. one year ago	41.9	6.2	3.2	11.8	16.1	47.0	42.5	26.0	12.4	-3.8	-8.0	5.4		
	<b>Utilisation</b>	in percent (%)		97.7	81.5	75.2	83.0	91.7	94.9	91.7	94.2	91.5	80.9	79.8	92.7

These statistics are based on data supplied by merchant SC manufacturers who together represent the great majority of the world's SC production.

All MOS data are expressed in 8 inch equivalent wafers, except for the 300mm wafer data where annotated as "numbers of wafers".

WSpW = Wafer-Starts per Week.

Legends : Capacity WSpW Actual WSpW Utilisation of capacity in percent



		3Q 04	4Q 04	1Q 05	2Q 05	3Q 05	4Q 05	1Q 06	2Q 06	3Q 06	4Q 06	1Q 07	2Q 07
< 200mm Wafers in MOS Total	<b>Capacity</b>	Wafer-starts per week x 1000	332.5	304.5	287.4	267.3	242.6	265.0	264.4	230.7	204.5	182.7	187.2
		% growth re. preceding quarter	0.5	-8.4	-5.6	-7.0	-9.2	9.3	-0.2	-12.8	-11.3	-10.7	2.4
		% growth re. one year ago	n.a.	n.a.	-23.6	-19.3	-27.1	-13.0	-8.0	-13.7	-15.7	-31.1	-29.2
		% growth re. one year ago	n.a.	n.a.	-39.0	-29.9	-38.6	-22.9	-3.0	-12.3	-3.7	-18.4	-17.5
< 200mm Wafers in MOS Total	<b>Actual Wafer-Starts</b>	Wafer-starts per week x1000	315.8	269.9	206.7	220.2	193.9	208.0	200.5	193.1	186.7	169.7	165.3
		% growth re. preceding quarter	0.5	-14.5	-23.4	6.5	-11.9	7.3	-3.6	-3.7	-3.4	-9.1	-2.6
		% growth re. one year ago	n.a.	n.a.	-39.0	-29.9	-38.6	-22.9	-3.0	-12.3	-3.7	-18.4	-17.5
		% growth re. one year ago	n.a.	n.a.	-39.0	-29.9	-38.6	-22.9	-3.0	-12.3	-3.7	-18.4	-17.5
	<b>Utilisation</b>	in percent (%)	95.0	88.6	71.9	82.4	79.9	78.5	75.8	83.7	91.3	92.9	88.3

		3Q 04	4Q 04	1Q 05	2Q 05	3Q 05	4Q 05	1Q 06	2Q 06	3Q 06	4Q 06	1Q 07	2Q 07
200mm wafers in MOS Total	<b>Capacity</b>	Wafer-starts per week x1000	877.1	895.3	912.9	934.9	980.9	984.5	998.1	1021.6	1041.8	1062.7	1031.3
		% growth re. preceding quarter	3.1	2.1	2.0	2.4	4.9	0.4	1.4	2.4	2.0	2.0	-3.0
		% growth re. one year ago	6.4	9.5	10.1	9.9	11.8	10.0	9.3	9.3	6.2	7.9	3.3
		% growth re. one year ago	n.a.	n.a.	24.2	95.7	91.2	76.5	71.2	81.0	83.9	92.0	70.2
200mm wafers in MOS Total	<b>Actual Wafer-Starts</b>	Wafer-starts per week x1000	816.6	766.2	805.9	853.4	911.3	934.6	917.8	936.7	929.1	927.5	896.1
		% growth re. preceding quarter	0.0	-6.2	5.2	5.9	6.8	2.6	-1.8	2.1	-0.8	-0.2	-3.4
		% growth re. one year ago	9.7	0.3	1.2	4.6	11.6	22.0	13.9	9.8	2.0	-0.8	-2.4
		% growth re. one year ago	9.7	0.3	1.2	4.6	11.6	22.0	13.9	9.8	2.0	-0.8	-2.4
	<b>Utilisation</b>	in percent (%)	93.1	85.6	88.3	91.3	92.9	94.9	92.0	91.7	89.2	87.3	86.9

		3Q 04	4Q 04	1Q 05	2Q 05	3Q 05	4Q 05	1Q 06	2Q 06	3Q 06	4Q 06	1Q 07	2Q 07
300mm wafers in MOS Total	<b>Capacity</b>	WSpW x 1000 expressed in 8 inch equivalent wafers	135.7	163.6	203.6	225.5	259.4	288.7	348.5	408.2	477.0	554.4	593.3
		WSpW x 1000 expressed in numbers of wafers	60.3	72.7	90.5	100.2	115.3	128.3	154.9	181.4	212.0	246.4	263.7
		% growth re. preceding quarter	17.8	20.6	24.5	10.7	15.1	11.3	20.7	17.1	16.9	16.2	7.0
		% growth re. one year ago	n.a.	n.a.	24.2	95.7	91.2	76.5	71.2	81.0	83.9	92.0	70.2
300mm wafers in MOS Total	<b>Actual Wafer-Starts</b>	WSpW x 1000 expressed in 8 inch equivalent wafers	117.2	142.9	189.0	204.5	240.5	281.7	335.3	394.9	419.0	471.4	528.3
		WSpW x 1000 expressed in numbers of wafers	52.1	63.5	84.0	90.9	106.9	125.2	149.0	175.5	186.2	209.5	234.8
		% growth re. preceding quarter	6.3	21.9	32.3	8.2	17.6	17.1	19.0	17.8	6.1	12.5	12.1
		% growth re. one year ago	n.a.	n.a.	242.9	85.5	105.2	97.2	77.4	93.1	74.2	67.3	57.6
	<b>Utilisation</b>	in percent (%)	86.4	87.3	92.8	90.7	92.7	97.6	96.2	96.7	87.8	85.0	89.0

These statistics are based on data supplied by merchant SC manufacturers who together represent the great majority of the world's SC production.