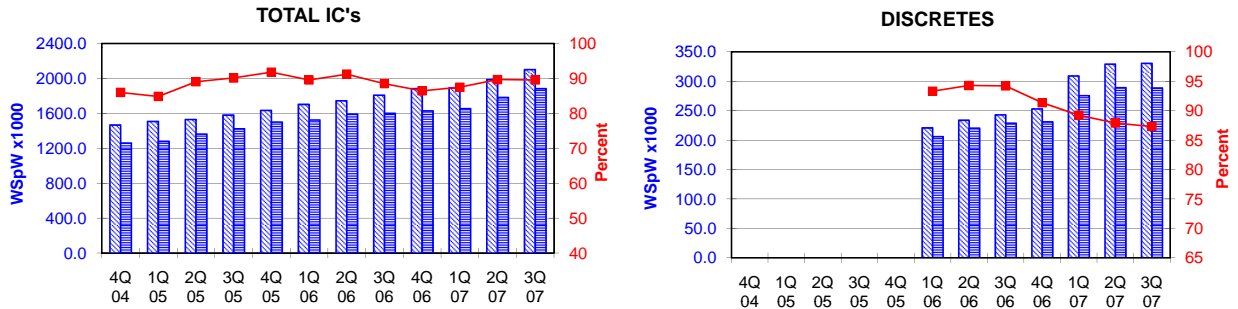


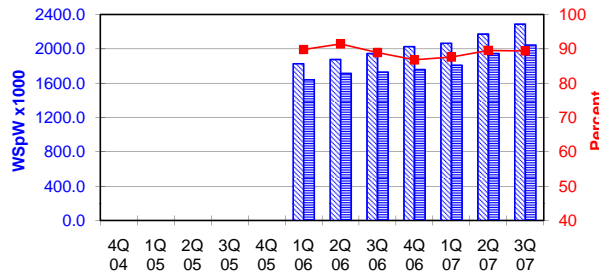
TOTAL IC's and TOTAL Semiconductors data are expressed in 8 inch equivalent wafers. DISCRETES data are expressed in 6 inch equivalent wafers. "TOTAL IC's" include Bipolar data, which were converted for this purpose from 5 inch to 8 inch equivalent wafers by the factor 0.391. "TOTAL Semiconductors" include DISCRETES data, which were converted for this purpose from 6 inch to 8 inch equivalent wafers by the factor 0.563.

WSpW = Wafer-Starts per Week.

Legends : Capacity WSpW Actual WSpW Utilisation of capacity in percent



TOTAL Semiconductors



		4Q 04	1Q 05	2Q 05	3Q 05	4Q 05	1Q 06	2Q 06	3Q 06	4Q 06	1Q 07	2Q 07	3Q 07	
TOTAL IC's	Capacity	Wafer-starts per week x 1000	1466.4	1508.3	1529.9	1580.1	1634.7	1702.8	1744.4	1808.0	1883.7	1892.0	1987.3	2102.1
		% growth re. preceding quarter	0.8	2.9	1.4	3.3	3.5	4.2	2.4	3.6	4.2	0.4	5.0	5.8
		% growth re. one year ago	9.4	9.9	8.8	8.7	11.5	12.9	14.0	14.4	15.2	11.1	13.9	16.3
	Actual Wafer-Starts	Wafer-starts per week x 1000	1260.9	1279.6	1362.5	1424.0	1500.4	1524.6	1591.2	1600.3	1628.3	1654.7	1781.9	1882.6
		% growth re. preceding quarter	-6.3	1.5	6.5	4.5	5.4	1.6	4.4	0.6	1.8	1.6	7.7	5.6
		% growth re. one year ago	2.7	-0.2	1.6	5.9	19.0	19.1	16.8	12.4	8.5	8.5	12.0	17.6
Utilisation	in percent (%)	86.0	84.8	89.1	90.1	91.8	89.5	91.2	88.5	86.4	87.5	89.7	89.6	

Discrete Semiconductor participation expanded from 1Q-2007

		1Q 06	2Q 06	3Q 06	4Q 06	1Q 07	2Q 07	3Q 07			
DISCRETES (6 inch equivs.)	Capacity	Wafer-starts per week x1000	220.8	233.8	242.9	252.9	308.9	329.0	330.4		
		% growth re. preceding quarter				5.9	3.9	4.1	n.a.	6.5	0.4
		% growth re. one year ago						n.a.	n.a.	n.a.	
	Actual Wafer-Starts	Wafer-starts per week x1000	206.0	220.4	228.8	231.0	275.6	289.2	288.4		
		% growth re. preceding quarter		7.0	3.8	1.0	n.a.	4.9	-0.3		
		% growth re. one year ago					n.a.	n.a.	n.a.		
Utilisation	in percent (%)	93.3	94.3	94.2	91.3	89.2	87.9	87.3			

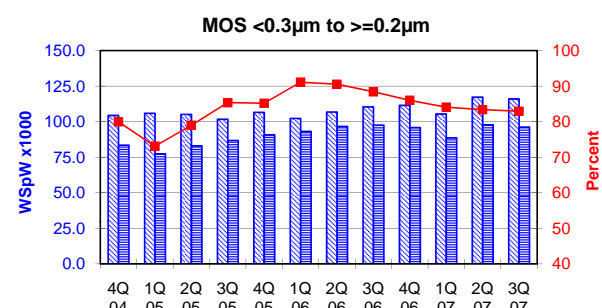
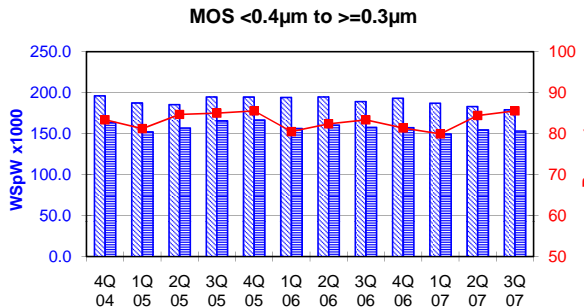
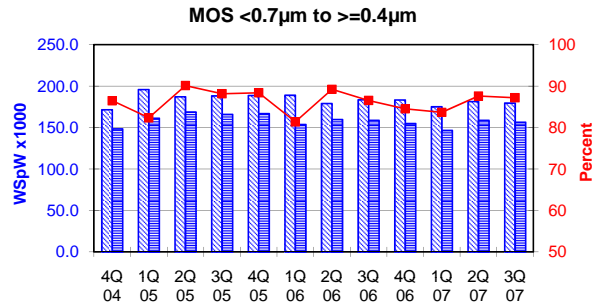
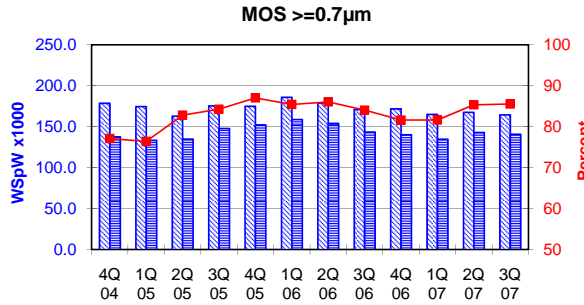
		1Q 06	2Q 06	3Q 06	4Q 06	1Q 07	2Q 07	3Q 07	
TOTAL Semiconductors	Capacity	Wafer-starts per week x1000	1827.2	1876.1	1944.8	2026.1	2065.9	2172.5	2288.1
		% growth re. preceding quarter		2.7	3.7	4.2	2.0	5.2	5.3
		% growth re. one year ago					n.a.	n.a.	n.a.
	Actual Wafer-Starts	Wafer-starts per week x1000	1640.6	1715.3	1729.1	1758.4	1809.9	1944.7	2044.9
		% growth re. preceding quarter		4.6	0.8	1.7	2.9	7.5	5.2
		% growth re. one year ago					n.a.	n.a.	n.a.
Utilisation	in percent (%)	89.8	91.4	88.9	86.8	87.6	89.5	89.4	

These statistics are based on data supplied by merchant SC manufacturers who together represent the great majority of the world's SC production.

All MOS data are expressed in 8 inch equivalent wafers.

WSpW = Wafer-Starts per Week.

Legends : Capacity WSpW Actual WSpW Utilisation of capacity in percent



MOS ≥0.7µm	Capacity	Wafer-starts per week x1000	4Q 04	1Q 05	2Q 05	3Q 05	4Q 05	1Q 06	2Q 06	3Q 06	4Q 06	1Q 07	2Q 07	3Q 07
		% growth re. preceding quarter	-14.2	-2.2	-6.7	7.7	-0.3	6.3	-3.7	-4.5	0.5	-4.0	1.6	-1.8
		% growth re. one year ago	-15.6	-18.1	-22.6	-15.7	-2.1	6.5	9.9	-2.6	-1.8	-11.2	-6.4	-3.7
		Actual Wafer-Starts	137.7	133.4	134.9	147.8	152.2	158.8	154.0	143.6	140.2	134.7	143.0	140.7
MOS ≥0.7µm	Actual Wafer-Starts	Wafer-starts per week x1000	-27.3	-3.1	1.1	9.6	3.0	4.3	-3.0	-6.8	-2.4	-3.9	6.2	-1.6
		% growth re. preceding quarter	-25.1	-28.9	-30.2	-22.0	10.5	19.0	14.2	-2.8	-7.9	-15.2	-7.1	-2.0
		% growth re. one year ago	77.1	76.4	82.8	84.3	87.0	85.4	86.0	84.0	81.6	81.6	85.3	85.5
		Utilisation	in percent (%)											

MOS <0.7µm to ≥0.4µm	Capacity	Wafer-starts per week x1000	171.5	195.9	187.2	188.2	188.7	189.0	179.0	183.5	183.3	175.1	181.3	179.5
		% growth re. preceding quarter	-0.5	14.2	-4.4	0.5	0.3	0.2	-5.3	2.5	-0.1	-4.5	3.5	-1.0
		% growth re. one year ago	7.3	19.5	10.8	9.2	10.0	-3.5	-4.4	-2.5	-2.9	-7.4	1.3	-2.2
		Actual Wafer-Starts	148.3	161.3	168.7	165.9	166.8	153.8	159.7	158.8	154.9	146.5	158.8	156.5
MOS <0.7µm to ≥0.4µm	Actual Wafer-Starts	Wafer-starts per week x1000	-8.8	8.8	4.6	-1.7	0.5	-7.8	3.8	-0.6	-2.5	-5.4	8.4	-1.4
		% growth re. preceding quarter	3.6	6.9	4.1	2.0	12.5	-4.6	-5.3	-4.3	-7.1	-4.7	-0.6	-1.4
		% growth re. one year ago	86.5	82.3	90.1	88.2	88.4	81.4	89.2	86.5	84.5	83.7	87.6	87.2
		Utilisation	in percent (%)											

MOS <0.4µm to ≥0.3µm	Capacity	Wafer-starts per week x1000	196.2	187.5	185.4	194.8	194.7	194.3	194.8	189.2	193.2	187.2	183.1	179.1
		% growth re. preceding quarter	-2.3	-4.4	-1.1	5.1	-0.1	-0.2	0.3	-2.9	2.1	-3.1	-2.2	-2.2
		% growth re. one year ago	-1.0	-3.1	-5.8	-3.0	-0.8	3.6	5.1	-2.9	-0.8	-3.7	-6.0	-5.3
		Actual Wafer-Starts	163.6	152.3	157.0	165.6	166.6	156.4	160.5	157.7	157.2	149.6	154.6	153.2
MOS <0.4µm to ≥0.3µm	Actual Wafer-Starts	Wafer-starts per week x1000	-12.5	-6.9	3.1	5.5	0.6	-6.1	2.6	-1.7	-0.3	-4.8	3.3	-0.9
		% growth re. preceding quarter	-7.4	-15.9	-16.3	-11.4	1.8	2.7	2.2	-4.8	-5.6	-4.3	-3.7	-2.9
		% growth re. one year ago	83.4	81.2	84.7	85.0	85.6	80.5	82.4	83.4	81.4	79.9	84.4	85.5
		Utilisation	in percent (%)											

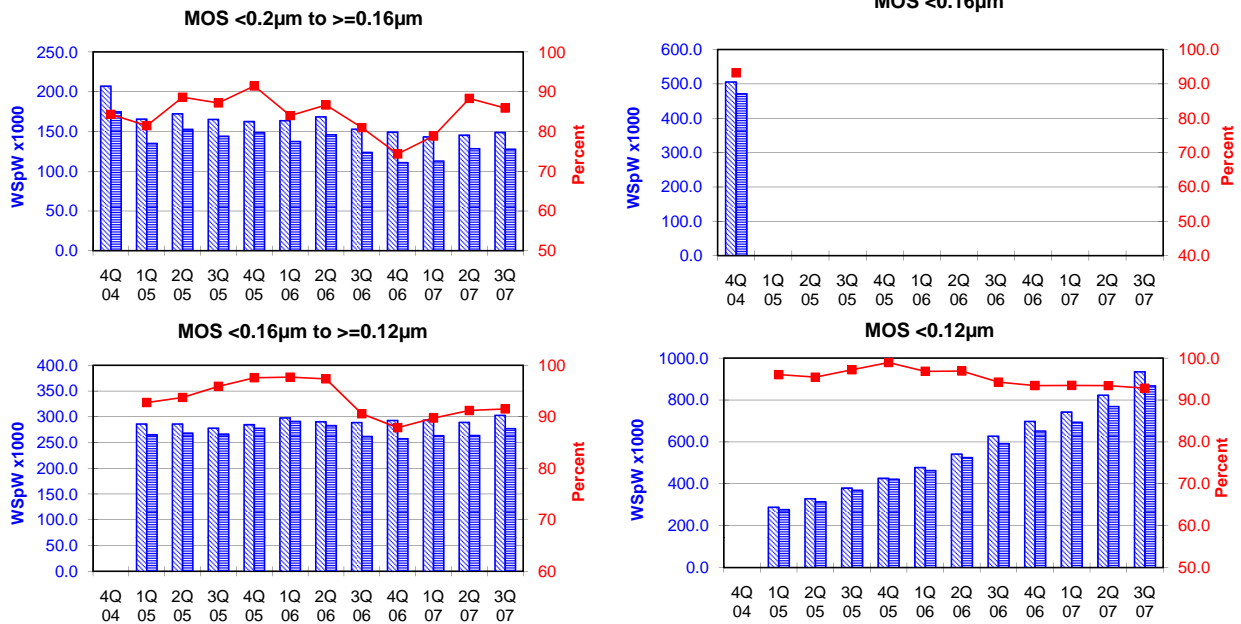
MOS <0.3µm to ≥0.2µm	Capacity	Wafer-starts per week x1000	104.4	105.9	105.1	101.7	106.6	102.3	106.8	110.4	111.5	105.4	117.3	116.0
		% growth re. preceding quarter	-1.6	1.4	-0.8	-3.2	4.8	-4.0	4.4	3.4	1.0	-5.5	11.3	-1.1
		% growth re. one year ago	-5.5	-3.4	-0.2	-4.1	2.1	-3.4	1.6	8.6	4.6	3.0	9.8	5.1
		Actual Wafer-Starts	83.5	77.4	83.0	86.8	90.8	93.2	96.7	97.6	95.9	88.6	97.8	96.2
MOS <0.3µm to ≥0.2µm	Actual Wafer-Starts	Wafer-starts per week x1000	-11.5	-7.3	7.2	4.6	4.6	2.6	3.8	0.9	-1.7	-7.6	10.4	-1.6
		% growth re. preceding quarter	-13.6	-22.4	-17.4	-8.0	8.7	20.4	16.5	12.4	5.6	-4.9	1.1	-1.4
		% growth re. one year ago	80.0	73.1	79.0	85.3	85.2	91.1	90.5	88.4	86.0	84.1	83.4	82.9
		Utilisation	in percent (%)											

These statistics are based on data supplied by merchant SC manufacturers who together represent the great majority of the world's SC production.

All MOS data are expressed in 8 inch equivalent wafers.

WSpW = Wafer-Starts per Week.

Legends : Capacity WSpW Actual WSpW Utilisation of capacity in percent



		4Q 04	1Q 05	2Q 05	3Q 05	4Q 05	1Q 06	2Q 06	3Q 06	4Q 06	1Q 07	2Q 07	3Q 07	
MOS <0.2µm to ≥0.16µm	Capacity	Wafer-starts per week x1000	207.1	165.6	172.2	165.2	162.5	163.6	168.4	152.9	149.2	143.2	145.4	148.8
		% growth re. preceding quarter	7.4	-20.0	4.0	-4.1	-1.6	0.7	2.9	-9.2	-2.4	-4.0	1.5	2.3
		% growth re. one year ago	-0.8	-20.9	-8.0	-14.4	-21.5	-1.2	-2.2	-7.4	-8.2	-12.5	-13.7	-2.7
	Actual Wafer-Starts	Wafer-starts per week x1000	174.6	134.9	152.6	144.0	148.6	137.4	145.9	123.8	110.9	112.9	128.4	127.8
		% growth re. preceding quarter	0.5	-22.7	13.1	-5.6	3.2	-7.5	6.2	-15.1	-10.4	1.8	13.7	-0.5
		% growth re. one year ago	-10.8	-32.1	-12.7	-17.1	-14.9	1.9	-4.4	-14.0	-25.4	-17.8	-12.0	3.2
Utilisation	in percent (%)	84.3	81.5	88.6	87.2	91.4	84.0	86.6	81.0	74.3	78.8	88.3	85.9	

		4Q 04	1Q 05	2Q 05	3Q 05	4Q 05	1Q 06	2Q 06	3Q 06	4Q 06	1Q 07	2Q 07	3Q 07
MOS <0.16µm	Capacity	Wafer-starts per week x 1000	505.6										
		% growth re. preceding quarter	8.7										
		% growth re. one year ago	45.7										
	Actual Wafer-Starts	Wafer-starts per week x1000	471.3										
		% growth re. preceding quarter	6.5										
		% growth re. one year ago	38.0										
Utilisation	in percent (%)	93.2											

		4Q 04	1Q 05	2Q 05	3Q 05	4Q 05	1Q 06	2Q 06	3Q 06	4Q 06	1Q 07	2Q 07	3Q 07	
MOS <0.16µm to ≥0.12µm	Capacity	Wafer-starts per week x1000		285.9	286.0	277.9	284.6	297.8	290.4	288.8	292.9	293.3	289.1	302.7
		% growth re. preceding quarter			0.0	-2.8	2.4	4.6	-2.5	-0.6	1.4	0.1	-1.4	4.7
		% growth re. one year ago						4.2	1.5	3.9	2.9	-1.5	-0.4	4.8
	Actual Wafer-Starts	Wafer-starts per week x1000		265.2	268.1	266.5	277.7	290.9	282.7	261.6	257.4	263.2	263.7	277.0
		% growth re. preceding quarter			1.1	-0.6	4.2	4.8	-2.8	-7.5	-1.6	2.3	0.2	5.0
		% growth re. one year ago						9.7	5.4	-1.8	-7.3	-9.5	-6.7	5.9
Utilisation	in percent (%)		92.8	93.7	95.9	97.6	97.7	97.3	90.6	87.9	89.7	91.2	91.5	

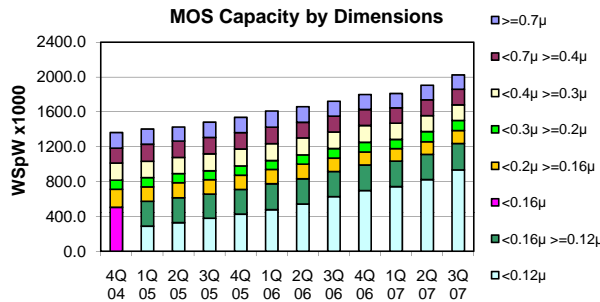
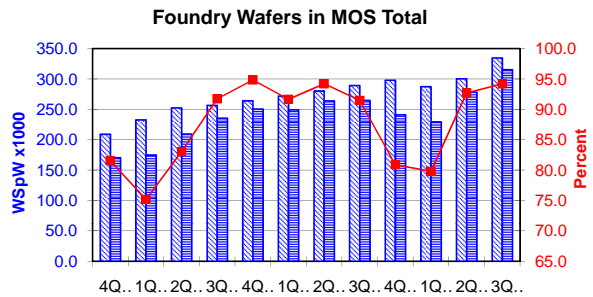
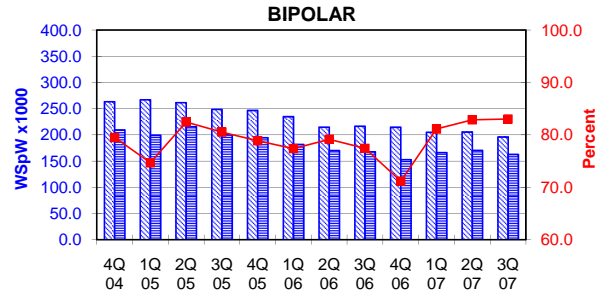
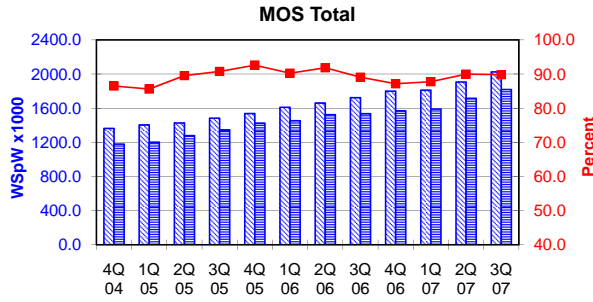
		4Q 04	1Q 05	2Q 05	3Q 05	4Q 05	1Q 06	2Q 06	3Q 06	4Q 06	1Q 07	2Q 07	3Q 07	
MOS <0.12µm	Capacity	Wafer-starts per week x1000		288.5	328.8	379.7	426.2	478.1	542.0	627.6	697.9	742.6	823.1	934.8
		% growth re. preceding quarter			14.0	15.5	12.2	12.2	13.4	15.8	11.2	6.4	10.8	13.6
		% growth re. one year ago						65.7	64.8	65.3	63.7	55.3	51.9	48.9
	Actual Wafer-Starts	Wafer-starts per week x1000		277.1	313.8	369.1	421.6	463.0	525.2	591.6	652.1	694.2	769.0	867.5
		% growth re. preceding quarter			13.2	17.6	14.2	9.8	13.4	12.6	10.2	6.5	10.8	12.8
		% growth re. one year ago						67.1	67.4	60.3	54.7	49.9	46.4	46.6
Utilisation	in percent (%)		96.0	95.4	97.2	98.9	96.8	96.9	94.3	93.4	93.5	93.4	92.8	

These statistics are based on data supplied by merchant SC manufacturers who together represent the great majority of the world's SC production.

All MOS data are expressed in 8 inch equivalent wafers. Bipolar data are expressed in 5 inch equivalent wafers.

WSpW = Wafer-Starts per Week.

Legends : Capacity WSpW Actual WSpW Utilisation of capacity in percent



			4Q 04	1Q 05	2Q 05	3Q 05	4Q 05	1Q 06	2Q 06	3Q 06	4Q 06	1Q 07	2Q 07	3Q 07
MOS Total	Capacity	Wafer-starts per week x 1000	1363.4	1403.9	1427.6	1482.9	1538.2	1611.0	1660.4	1723.3	1799.8	1811.8	1906.9	2025.4
		% growth re. preceding quarter	1.3	3.0	1.7	3.9	3.7	4.7	3.1	3.8	4.4	0.7	5.2	6.2
	Actual Wafer-Starts	Wafer-starts per week x1000	1179.0	1201.6	1278.1	1345.7	1424.3	1453.5	1524.7	1534.7	1568.6	1589.7	1715.3	1818.9
		% growth re. preceding quarter	-5.6	1.9	6.4	5.3	5.8	2.1	4.9	0.7	2.2	1.3	7.9	6.0
	Utilisation	in percent (%)	86.5	85.6	89.5	90.7	92.6	90.2	91.8	89.1	87.2	87.7	90.0	89.8

BIPOLAR (5 inch equivs.)	Capacity	Wafer-starts per week x1000	263.5	267.0	261.7	248.7	246.8	234.9	214.9	216.7	214.7	205.0	205.6	196.1
		% growth re. preceding quarter	-5.5	1.3	-2.0	-5.0	-0.8	-4.8	-8.5	0.8	-0.9	-4.5	0.3	-4.6
		% growth re. one year ago	-1.2	-2.6	-5.9	-10.8	-6.3	-12.0	-17.9	-12.9	-13.0	-12.7	-4.3	-9.5
	Actual Wafer-Starts	Wafer-starts per week x1000	209.5	199.4	215.8	200.3	194.7	181.8	170.1	167.8	152.8	166.3	170.4	162.8
		% growth re. preceding quarter	-14.3	-4.8	8.2	-7.2	-2.8	-6.6	-6.4	-1.4	-8.9	8.8	2.5	-4.5
Utilisation	in percent (%)	79.5	74.7	82.5	80.5	78.9	77.4	79.2	77.4	71.2	81.1	82.9	83.0	

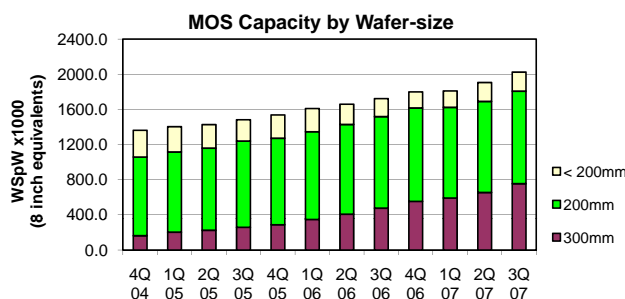
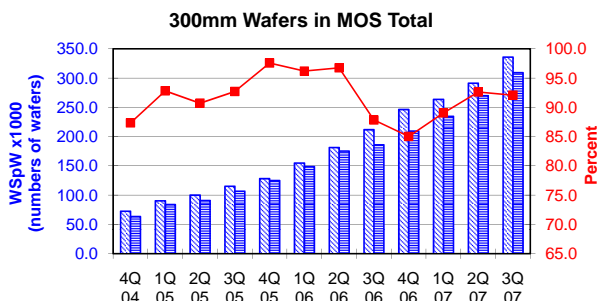
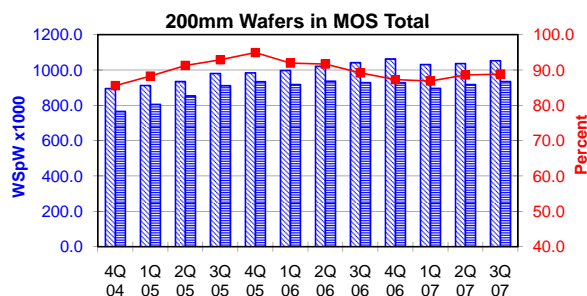
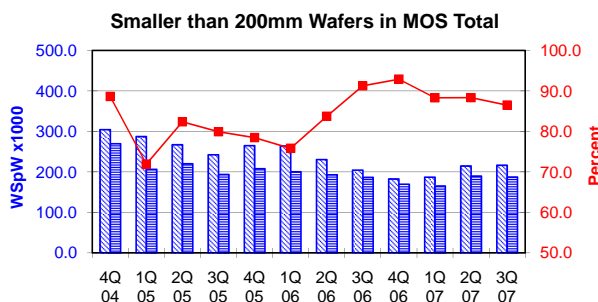
Foundry Wafers in MOS Total	Capacity	Wafer-starts per week x1000	209.1	232.7	252.4	256.7	264.2	272.0	280.3	289.4	298.1	287.5	300.4	334.7
		% growth re. preceding quarter	0.7	11.3	8.5	1.7	2.9	3.0	3.1	3.2	3.0	-3.6	4.5	11.4
		% growth re. one year ago	28.4	35.6	33.8	23.7	26.4	16.9	11.1	12.7	12.8	5.7	7.2	15.7
	Actual Wafer-Starts	Wafer-starts per week x1000	170.5	174.9	209.6	235.5	250.6	249.3	264.1	264.7	241.1	229.4	278.4	315.3
		% growth re. preceding quarter	-15.9	2.6	19.8	12.4	6.4	-0.5	5.9	0.2	-8.9	-4.9	21.4	13.3
Utilisation	in percent (%)	81.5	75.2	83.0	91.7	94.9	91.7	94.2	91.5	80.9	79.8	92.7	94.2	

These statistics are based on data supplied by merchant SC manufacturers who together represent the great majority of the world's SC production.

All MOS data are expressed in 8 inch equivalent wafers, except for the 300mm wafer data where annotated as "numbers of wafers".

WSpW = Wafer-Starts per Week.

Legends: Capacity WSpW Actual WSpW Utilisation of capacity in percent



		4Q 04	1Q 05	2Q 05	3Q 05	4Q 05	1Q 06	2Q 06	3Q 06	4Q 06	1Q 07	2Q 07	3Q 07	
< 200mm Wafers in MOS Total	Capacity	Wafer-starts per week x 1000	304.5	287.4	267.3	242.6	265.0	264.4	230.7	204.5	182.7	187.2	214.8	216.6
		% growth re. preceding quarter	-0.5	-5.6	-7.0	-9.2	9.3	-0.2	-12.8	-11.3	-10.7	2.4	14.7	0.9
		% growth re. one year ago	n.a.	-23.6	-19.3	-27.1	-13.0	-8.0	-13.7	-15.7	-31.1	-29.2	-6.9	5.9
	Actual Wafer-Starts	Wafer-starts per week x1000	269.9	206.7	220.2	193.9	208.0	200.5	193.1	186.7	169.7	165.3	189.7	187.4
		% growth re. preceding quarter	-14.5	-23.4	6.5	-11.9	7.3	-3.6	-3.7	-3.4	-9.1	-2.6	14.8	-1.2
		% growth re. one year ago	n.a.	-39.0	-29.9	-38.6	-22.9	-3.0	-12.3	-3.7	-18.4	-17.5	-1.8	0.4
Utilisation	in percent (%)	88.6	71.9	82.4	79.9	78.5	75.8	83.7	91.3	92.9	88.3	88.3	86.5	

		895.3	912.9	934.9	980.9	984.5	998.1	1021.6	1041.8	1062.7	1031.3	1036.5	1053.0	
200mm wafers in MOS Total	Capacity	Wafer-starts per week x1000	895.3	912.9	934.9	980.9	984.5	998.1	1021.6	1041.8	1062.7	1031.3	1036.5	1053.0
		% growth re. preceding quarter	2.1	2.0	2.4	4.9	0.4	1.4	2.4	2.0	2.0	-3.0	0.5	1.6
		% growth re. one year ago	9.5	10.1	9.9	11.8	10.0	9.3	9.3	6.2	7.9	3.3	1.5	1.1
	Actual Wafer-Starts	Wafer-starts per week x1000	766.2	805.9	853.4	911.3	934.6	917.8	936.7	929.1	927.5	896.1	918.3	935.6
		% growth re. preceding quarter	-6.2	5.2	5.9	6.8	2.6	-1.8	2.1	-0.8	-0.2	-3.4	2.5	1.9
		% growth re. one year ago	0.3	1.2	4.6	11.6	22.0	13.9	9.8	2.0	-0.8	-2.4	-2.0	0.7
Utilisation	in percent (%)	85.6	88.3	91.3	92.9	94.9	92.0	91.7	89.2	87.3	86.9	88.6	88.9	

		163.6	203.6	225.5	259.4	288.7	348.5	408.2	477.0	554.4	593.3	655.7	755.8	
300mm wafers in MOS Total	Capacity	WSpW x 1000 expressed in 8 inch equivalent wafers	163.6	203.6	225.5	259.4	288.7	348.5	408.2	477.0	554.4	593.3	655.7	755.8
		WSpW x 1000 expressed in numbers of wafers	72.7	90.5	100.2	115.3	128.3	154.9	181.4	212.0	246.4	263.7	291.4	335.9
		% growth re. preceding quarter	20.6	24.5	10.7	15.1	11.3	20.7	17.1	16.9	16.2	7.0	10.5	15.3
		% growth re. one year ago		240.2	95.7	91.2	76.5	71.2	81.0	83.9	92.0	70.2	60.6	58.4
	Actual Wafer-Starts	WSpW x 1000 expressed in 8 inch equivalent wafers	142.9	189.0	204.5	240.5	281.7	335.3	394.9	419.0	471.4	528.3	607.3	695.9
		WSpW x 1000 expressed in numbers of wafers	63.5	84.0	90.9	106.9	125.2	149.0	175.5	186.2	209.5	234.8	269.9	309.3
		% growth re. preceding quarter	21.9	32.3	8.2	17.6	17.1	19.0	17.8	6.1	12.5	12.1	14.9	14.6
		% growth re. one year ago		242.9	85.5	105.2	97.2	77.4	93.1	74.2	67.3	57.6	53.8	66.1
	Utilisation	in percent (%)	87.3	92.8	90.7	92.7	97.6	96.2	96.7	87.8	85.0	89.0	92.6	92.1

These statistics are based on data supplied by merchant SC manufacturers who together represent the great majority of the world's SC production.