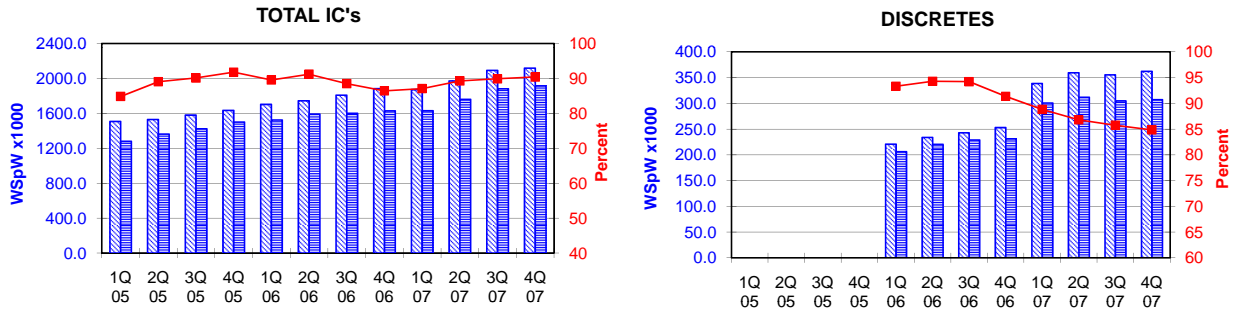


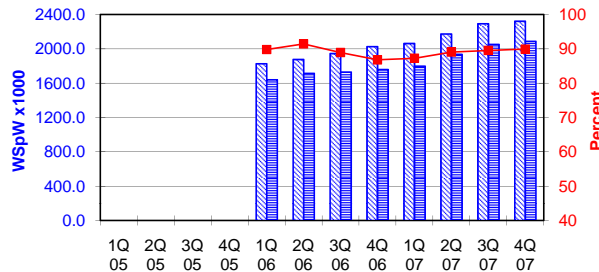
TOTAL IC's and TOTAL Semiconductors data are expressed in 8 inch equivalent wafers. DISCRETES data are expressed in 6 inch equivalent wafers. "TOTAL IC's" include Bipolar data, which were converted for this purpose from 5 inch to 8 inch equivalent wafers by the factor 0.391. "TOTAL Semiconductors" include DISCRETES data, which were converted for this purpose from 6 inch to 8 inch equivalent wafers by the factor 0.563.

WSpW = Wafer-Starts per Week.

Legends : Capacity WSpW Actual WSpW Utilisation of capacity in percent



TOTAL Semiconductors



		1Q 05	2Q 05	3Q 05	4Q 05	1Q 06	2Q 06	3Q 06	4Q 06	1Q 07	2Q 07	3Q 07	4Q 07	
TOTAL IC's	Capacity	Wafer-starts per week x 1000	1508.3	1529.9	1580.1	1634.7	1702.8	1744.4	1808.0	1883.7	1871.9	1971.6	2092.7	2117.9
		% growth re. preceding quarter	2.9	1.4	3.3	3.5	4.2	2.4	3.6	4.2	-0.6	5.3	6.1	1.2
		% growth re. one year ago	9.9	8.8	8.7	11.5	12.9	14.0	14.4	15.2	9.9	13.0	15.7	12.4
	Actual Wafer-Starts	Wafer-starts per week x 1000	1279.6	1362.5	1424.0	1500.4	1524.6	1591.2	1600.3	1628.3	1629.9	1760.2	1881.2	1914.5
		% growth re. preceding quarter	1.5	6.5	4.5	5.4	1.6	4.4	0.6	1.8	0.1	8.0	6.9	1.8
		% growth re. one year ago	-0.2	1.6	5.9	19.0	19.1	16.8	12.4	8.5	6.9	10.6	17.6	17.6
	Utilisation	in percent (%)	84.8	89.1	90.1	91.8	89.5	91.2	88.5	86.4	87.1	89.3	89.9	90.4

Discrete Semiconductor participation expanded from 1Q-2007

		1Q 07	2Q 07	3Q 07	4Q 07						
DISCRETES (6 inch equivs.)	Capacity	Wafer-starts per week x1000	220.8	233.8	242.9	252.9	338.5	359.3	355.3	362.0	
		% growth re. preceding quarter			5.9	3.9	4.1	n.a.	6.1	-1.1	1.9
		% growth re. one year ago						n.a.	n.a.	n.a.	n.a.
	Actual Wafer-Starts	Wafer-starts per week x1000	206.0	220.4	228.8	231.0	300.6	311.8	304.6	307.1	
		% growth re. preceding quarter		7.0	3.8	1.0	n.a.	3.7	-2.3	0.8	
		% growth re. one year ago					n.a.	n.a.	n.a.	n.a.	
	Utilisation	in percent (%)	93.3	94.3	94.2	91.3	88.8	86.8	85.7	84.8	

		1Q 07	2Q 07	3Q 07	4Q 07						
TOTAL Semiconductors	Capacity	Wafer-starts per week x1000	1827.2	1876.1	1944.8	2026.1	2062.5	2173.9	2292.8	2321.7	
		% growth re. preceding quarter			2.7	3.7	4.2	1.8	5.4	5.5	1.3
		% growth re. one year ago						n.a.	n.a.	n.a.	n.a.
	Actual Wafer-Starts	Wafer-starts per week x1000	1640.6	1715.3	1729.1	1758.4	1799.1	1935.8	2052.7	2087.4	
		% growth re. preceding quarter		4.6	0.8	1.7	2.3	7.6	6.0	1.7	
		% growth re. one year ago					n.a.	n.a.	n.a.	n.a.	
	Utilisation	in percent (%)	89.8	91.4	88.9	86.8	87.2	89.0	89.5	89.9	

Yellow coloured cells reflect revised inputs

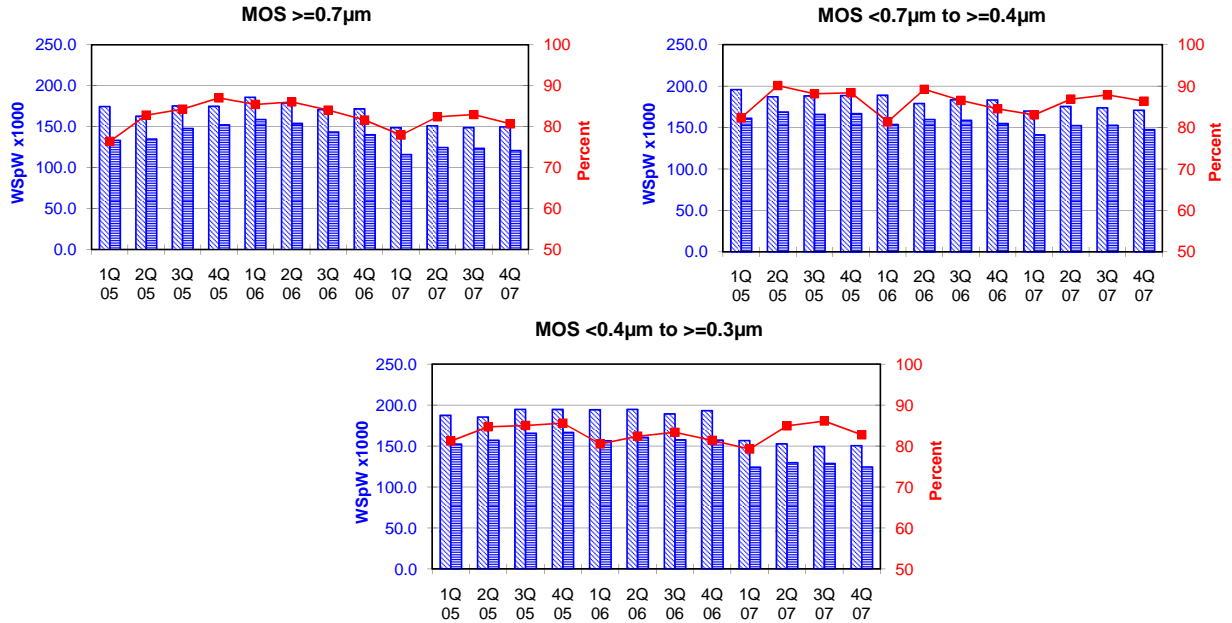
Green bordered cells contain changes resulting from revised inputs

These statistics are based on data supplied by merchant SC manufacturers who together represent the great majority of the world's SC production.

All MOS data are expressed in 8 inch equivalent wafers.

WSpW = Wafer-Starts per Week.

Legends : Capacity WSpW Actual WSpW Utilisation of capacity in percent



		1Q 05	2Q 05	3Q 05	4Q 05	1Q 06	2Q 06	3Q 06	4Q 06	1Q 07	2Q 07	3Q 07	4Q 07	
MOS $\geq 0.7\mu\text{m}$	Capacity	Wafer-starts per week x1000	174.6	162.9	175.4	174.9	185.9	179.0	170.9	171.8	148.8	151.2	148.9	149.8
		% growth re. preceding quarter	-2.2	-6.7	7.7	-0.3	6.3	-3.7	-4.5	0.5	-13.4	1.6	-1.5	0.6
		% growth re. one year ago	-18.1	-22.6	-15.7	-2.1	6.5	9.9	-2.6	-1.8	-20.0	-15.5	-12.9	-12.8
	Actual Wafer-Starts	Wafer-starts per week x1000	133.4	134.9	147.8	152.2	158.8	154.0	143.6	140.2	116.0	124.6	123.5	120.9
		% growth re. preceding quarter	-3.1	1.1	9.6	3.0	4.3	-3.0	-6.8	-2.4	-17.3	7.4	-0.9	-2.1
		% growth re. one year ago	-28.9	-30.2	-22.0	10.5	19.0	14.2	-2.8	-7.9	-27.0	-19.1	-14.0	-13.8
	Utilisation	in percent (%)	76.4	82.8	84.3	87.0	85.4	86.0	84.0	81.6	78.0	82.4	82.9	80.7

		1Q 05	2Q 05	3Q 05	4Q 05	1Q 06	2Q 06	3Q 06	4Q 06	1Q 07	2Q 07	3Q 07	4Q 07	
MOS $< 0.7\mu\text{m}$ to $\geq 0.4\mu\text{m}$	Capacity	Wafer-starts per week x1000	195.9	187.2	188.2	188.7	189.0	179.0	183.5	183.3	170.0	175.5	173.8	170.9
		% growth re. preceding quarter	14.2	-4.4	0.5	0.3	0.2	-5.3	2.5	-0.1	-7.3	3.2	-1.0	-1.7
		% growth re. one year ago	19.5	10.8	9.2	10.0	-3.5	-4.4	-2.5	-2.9	-10.1	-2.0	-5.3	-6.8
	Actual Wafer-Starts	Wafer-starts per week x1000	161.3	168.7	165.9	166.8	153.8	159.7	158.8	154.9	141.2	152.4	152.7	147.6
		% growth re. preceding quarter	8.8	4.6	-1.7	0.5	-7.8	3.8	-0.6	-2.5	-8.8	7.9	0.2	-3.3
		% growth re. one year ago	6.9	4.1	2.0	12.5	-4.6	-5.3	-4.3	-7.1	-8.2	-4.6	-3.8	-4.7
	Utilisation	in percent (%)	82.3	90.1	88.2	88.4	81.4	89.2	86.5	84.5	83.1	86.8	87.9	86.4

		1Q 05	2Q 05	3Q 05	4Q 05	1Q 06	2Q 06	3Q 06	4Q 06	1Q 07	2Q 07	3Q 07	4Q 07	
MOS $< 0.4\mu\text{m}$ to $\geq 0.3\mu\text{m}$	Capacity	Wafer-starts per week x1000	187.5	185.4	194.8	194.7	194.3	194.8	189.2	193.2	156.7	152.7	149.5	150.5
		% growth re. preceding quarter	-4.4	-1.1	5.1	-0.1	-0.2	0.3	-2.9	2.1	-18.9	-2.6	-2.1	0.7
		% growth re. one year ago	-3.1	-5.8	-3.0	-0.8	3.6	5.1	-2.9	-0.8	-19.4	-21.6	-21.0	-22.1
	Actual Wafer-Starts	Wafer-starts per week x1000	152.3	157.0	165.6	166.6	156.4	160.5	157.7	157.2	124.2	129.7	128.7	124.5
		% growth re. preceding quarter	-6.9	3.1	5.5	0.6	-6.1	2.6	-1.7	-0.3	-21.0	4.4	-0.8	-3.3
		% growth re. one year ago	-15.9	-16.3	-11.4	1.8	2.7	2.2	-4.8	-5.6	-20.6	-19.2	-18.4	-20.8
	Utilisation	in percent (%)	81.2	84.7	85.0	85.6	80.5	82.4	83.4	81.4	79.3	84.9	86.1	82.7

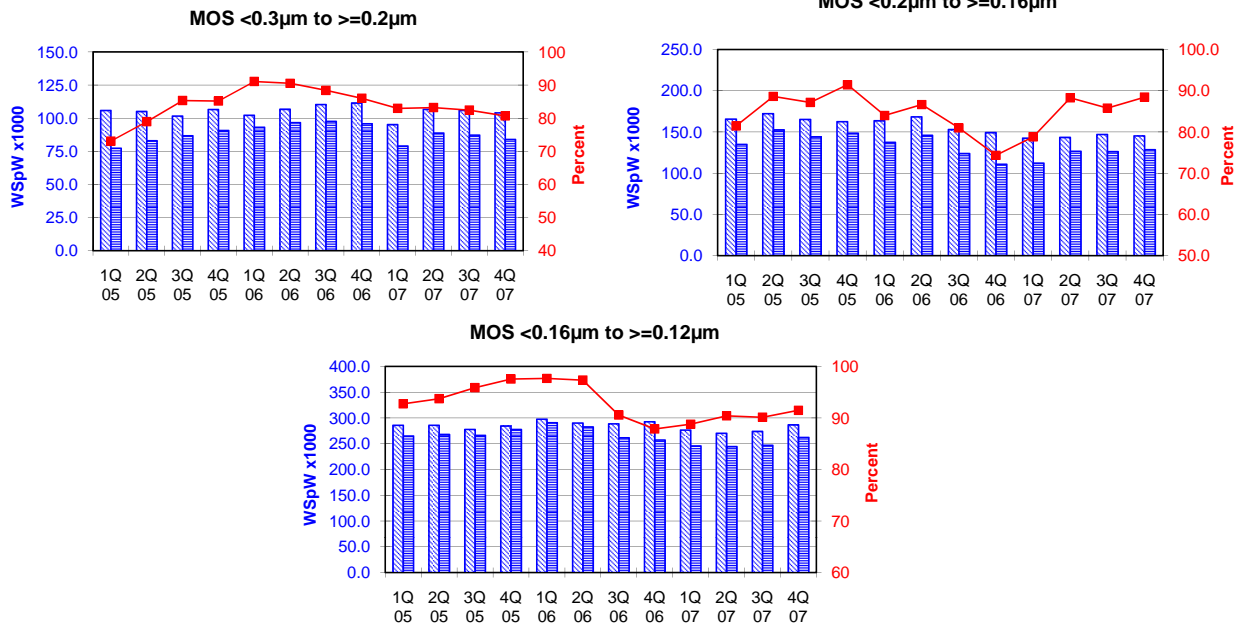
Yellow coloured cells reflect revised inputs Green bordered cells contain changes resulting from revised inputs

These statistics are based on data supplied by merchant SC manufacturers who together represent the great majority of the world's SC production.

All MOS data are expressed in 8 inch equivalent wafers.

WSpW = Wafer-Starts per Week.

Legends : Capacity WSpW Actual WSpW Utilisation of capacity in percent



		1Q 05	2Q 05	3Q 05	4Q 05	1Q 06	2Q 06	3Q 06	4Q 06	1Q 07	2Q 07	3Q 07	4Q 07	
MOS <0.3µm to >=0.2µm	Capacity	Wafer-starts per week x1000	105.9	105.1	101.7	106.6	102.3	106.8	110.4	111.5	95.2	106.7	105.9	104.1
		% growth re. preceding quarter	1.4	-0.8	-3.2	4.8	-4.0	4.4	3.4	1.0	-14.6	12.1	-0.7	-1.7
		% growth re. one year ago	-3.4	-0.2	-4.1	2.1	-3.4	1.6	8.6	4.6	-6.9	-0.1	-4.1	-6.6
	Actual Wafer-Starts	Wafer-starts per week x1000	77.4	83.0	86.8	90.8	93.2	96.7	97.6	95.9	79.0	88.8	87.3	84.0
		% growth re. preceding quarter	-7.3	7.2	4.6	4.6	2.6	3.8	0.9	-1.7	-17.6	12.4	-1.7	-3.8
		% growth re. one year ago	-22.4	-17.4	-8.0	8.7	20.4	16.5	12.4	5.6	-15.2	-8.2	-10.6	-12.4
Utilisation	in percent (%)	73.1	79.0	85.3	85.2	91.1	90.5	88.4	86.0	83.0	83.2	82.4	80.7	

		1Q 05	2Q 05	3Q 05	4Q 05	1Q 06	2Q 06	3Q 06	4Q 06	1Q 07	2Q 07	3Q 07	4Q 07	
MOS <0.2µm to >=0.16µm	Capacity	Wafer-starts per week x1000	165.6	172.2	165.2	162.5	163.6	168.4	152.9	149.2	142.5	143.4	147.0	145.3
		% growth re. preceding quarter	-20.0	4.0	-4.1	-1.6	0.7	2.9	-9.2	-2.4	-4.5	0.6	2.5	-1.2
		% growth re. one year ago	-20.9	-8.0	-14.4	-21.5	-1.2	-2.2	-7.4	-8.2	-12.9	-14.8	-3.9	-2.6
	Actual Wafer-Starts	Wafer-starts per week x1000	134.9	152.6	144.0	148.6	137.4	145.9	123.8	110.9	112.3	126.6	126.1	128.5
		% growth re. preceding quarter	-22.7	13.1	-5.6	3.2	-7.5	6.2	-15.1	-10.4	1.3	12.7	-0.4	1.9
		% growth re. one year ago	-32.1	-12.7	-17.1	-14.9	1.9	-4.4	-14.0	-25.4	-18.3	-13.2	1.9	15.9
Utilisation	in percent (%)	81.5	88.6	87.2	91.4	84.0	86.6	81.0	74.3	78.8	88.3	85.8	88.4	

		1Q 05	2Q 05	3Q 05	4Q 05	1Q 06	2Q 06	3Q 06	4Q 06	1Q 07	2Q 07	3Q 07	4Q 07	
MOS <0.16µm to >=0.12µm	Capacity	Wafer-starts per week x 1000	285.9	286.0	277.9	284.6	297.8	290.4	288.8	292.9	276.7	270.4	274.0	286.7
		% growth re. preceding quarter		0.0	-2.8	2.4	4.6	-2.5	-0.6	1.4	-5.5	-2.3	1.3	4.6
		% growth re. one year ago					4.2	1.5	3.9	2.9	-7.1	-6.9	-5.1	-2.1
	Actual Wafer-Starts	Wafer-starts per week x1000	265.2	268.1	266.5	277.7	290.9	282.7	261.6	257.4	245.7	244.5	247.0	262.3
		% growth re. preceding quarter		1.1	-0.6	4.2	4.8	-2.8	-7.5	-1.6	-4.5	-0.5	1.0	6.2
		% growth re. one year ago					9.7	5.4	-1.8	-7.3	-15.5	-13.5	-5.6	1.9
Utilisation	in percent (%)	92.8	93.7	95.9	97.6	97.7	97.3	90.6	87.9	88.8	90.4	90.1	91.5	

Yellow coloured cells reflect revised inputs

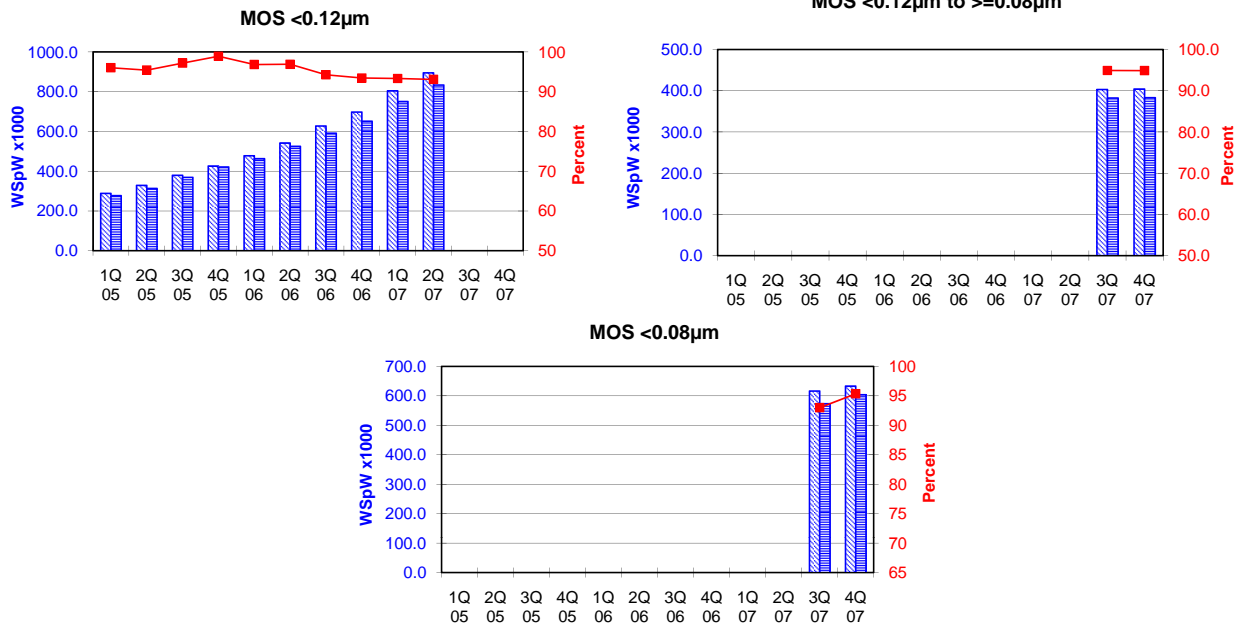
Green bordered cells contain changes resulting from revised inputs

These statistics are based on data supplied by merchant SC manufacturers who together represent the great majority of the world's SC production.

All MOS data are expressed in 8 inch equivalent wafers.

WSpW = Wafer-Starts per Week.

Legends : Capacity WSpW Actual WSpW Utilisation of capacity in percent



		1Q 05	2Q 05	3Q 05	4Q 05	1Q 06	2Q 06	3Q 06	4Q 06	1Q 07	2Q 07	3Q 07	4Q 07	
MOS <0.12µm	Capacity	Wafer-starts per week x1000	288.5	328.8	379.7	426.2	478.1	542.0	627.6	697.9	804.5	895.5		
		% growth re. preceding quarter		14.0	15.5	12.2	12.2	13.4	15.8	11.2	15.3	11.3		
		% growth re. one year ago					65.7	64.8	65.3	63.7	68.3	65.2		
	Actual Wafer-Starts	Wafer-starts per week x1000	277.1	313.8	369.1	421.6	463.0	525.2	591.6	652.1	750.8	833.8		
% growth re. preceding quarter			13.2	17.6	14.2	9.8	13.4	12.6	10.2	15.1	11.1			
% growth re. one year ago						67.1	67.4	60.3	54.7	62.2	58.8			
Utilisation	in percent (%)	96.0	95.4	97.2	98.9	96.8	96.9	94.3	93.4	93.3	93.1			
MOS <0.12µm to >=0.08µm	Capacity	Wafer-starts per week x1000										403.1	404.1	
		% growth re. preceding quarter										n.a.	n.a.	
		% growth re. one year ago										n.a.	n.a.	
	Actual Wafer-Starts	Wafer-starts per week x1000											382.6	383.4
% growth re. preceding quarter												n.a.	n.a.	
% growth re. one year ago												n.a.	n.a.	
Utilisation	in percent (%)										94.9	94.9		
MOS <0.08µm	Capacity	Wafer-starts per week x1000										616.9	633.4	
		% growth re. preceding quarter										n.a.	n.a.	
		% growth re. one year ago										n.a.	n.a.	
	Actual Wafer-Starts	Wafer-starts per week x1000											573.8	604.1
% growth re. preceding quarter												n.a.	n.a.	
% growth re. one year ago												n.a.	n.a.	
Utilisation	in percent (%)										93.0	95.4		

Yellow coloured cells reflect revised inputs

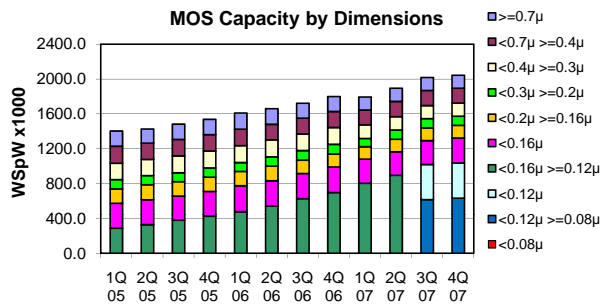
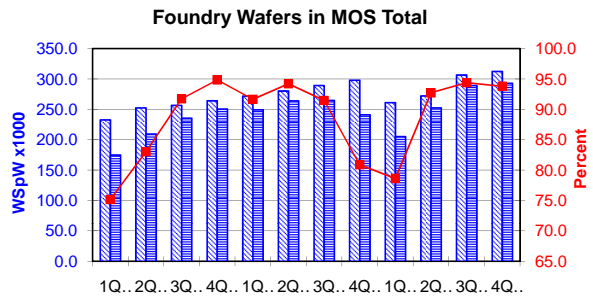
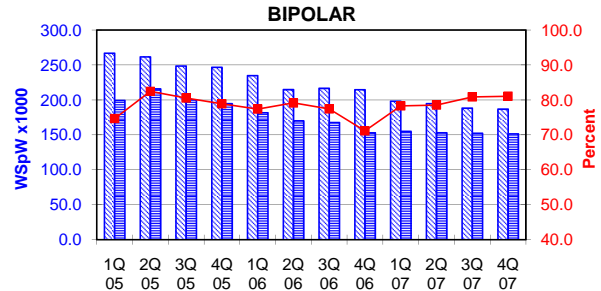
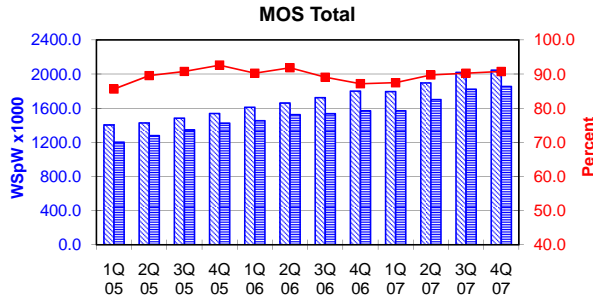
Green bordered cells contain changes resulting from revised inputs

These statistics are based on data supplied by merchant SC manufacturers who together represent the great majority of the world's SC production.

All MOS data are expressed in 8 inch equivalent wafers. Bipolar data are expressed in 5 inch equivalent wafers.

WSpW = Wafer-Starts per Week.

Legends : Capacity WSpW Actual WSpW Utilisation of capacity in percent



			1Q 05	2Q 05	3Q 05	4Q 05	1Q 06	2Q 06	3Q 06	4Q 06	1Q 07	2Q 07	3Q 07	4Q 07
MOS Total	Capacity	Wafer-starts per week x 1000	1403.9	1427.6	1482.9	1538.2	1611.0	1660.4	1723.3	1799.8	1794.4	1895.4	2019.1	2044.8
		% growth re. preceding quarter	3.0	1.7	3.9	3.7	4.7	3.1	3.8	4.4	-0.3	5.6	6.5	1.3
	Actual Wafer-Starts	Wafer-starts per week x1000	1201.6	1278.1	1345.7	1424.3	1453.5	1524.7	1534.7	1568.6	1569.2	1700.4	1821.7	1855.3
		% growth re. preceding quarter	1.9	6.4	5.3	5.8	2.1	4.9	0.7	2.2	0.0	8.4	7.1	1.8
Utilisation	in percent (%)	85.6	89.5	90.7	92.6	90.2	91.8	89.1	87.2	87.4	89.7	90.2	90.7	

			1Q 05	2Q 05	3Q 05	4Q 05	1Q 06	2Q 06	3Q 06	4Q 06	1Q 07	2Q 07	3Q 07	4Q 07
BIPOLAR (5 inch equivs.)	Capacity	Wafer-starts per week x1000	267.0	261.7	248.7	246.8	234.9	214.9	216.7	214.7	198.2	194.8	188.3	186.9
		% growth re. preceding quarter	1.3	-2.0	-5.0	-0.8	-4.8	-8.5	0.8	-0.9	-7.7	-1.7	-3.3	-0.7
	Actual Wafer-Starts	Wafer-starts per week x1000	199.4	215.8	200.3	194.7	181.8	170.1	167.8	152.8	155.2	153.0	152.3	151.5
		% growth re. preceding quarter	-4.8	8.2	-7.2	-2.8	-6.6	-6.4	-1.4	-8.9	1.6	-1.4	-0.5	-0.5
Utilisation	in percent (%)	74.7	82.5	80.5	78.9	77.4	79.2	77.4	71.2	78.3	78.5	80.9	81.1	

			1Q 05	2Q 05	3Q 05	4Q 05	1Q 06	2Q 06	3Q 06	4Q 06	1Q 07	2Q 07	3Q 07	4Q 07
Foundry Wafers in MOS Total	Capacity	Wafer-starts per week x1000	232.7	252.4	256.7	264.2	272.0	280.3	289.4	298.1	261.1	272.2	306.6	312.5
		% growth re. preceding quarter	11.3	8.5	1.7	2.9	3.0	3.1	3.2	3.0	-12.4	4.3	12.6	1.9
	Actual Wafer-Starts	Wafer-starts per week x1000	174.9	209.6	235.5	250.6	249.3	264.1	264.7	241.1	205.3	252.4	289.4	293.1
		% growth re. preceding quarter	2.6	19.8	12.4	6.4	-0.5	5.9	0.2	-8.9	-14.8	22.9	14.7	1.3
Utilisation	in percent (%)	75.2	83.0	91.7	94.9	91.7	94.2	91.5	80.9	78.6	92.7	94.4	93.8	

Yellow coloured cells reflect revised inputs

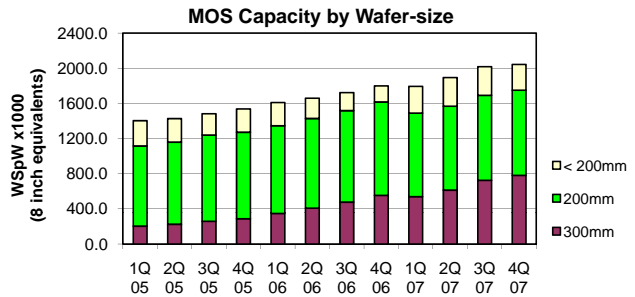
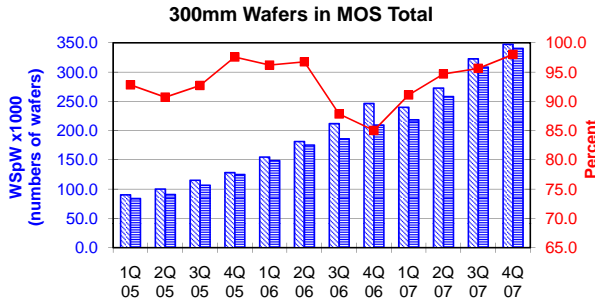
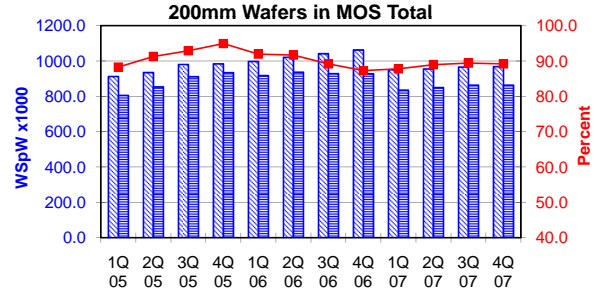
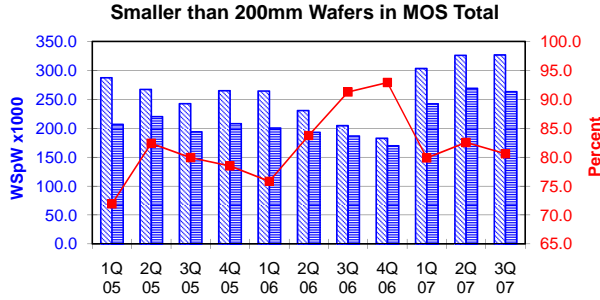
Green bordered cells contain changes resulting from revised inputs

These statistics are based on data supplied by merchant SC manufacturers who together represent the great majority of the world's SC production.

All MOS data are expressed in 8 inch equivalent wafers, except for the 300mm wafer data where annotated as "numbers of wafers".

WSpW = Wafer-Starts per Week.

Legends : Capacity WSpW Actual WSpW Utilisation of capacity in percent



			1Q 05	2Q 05	3Q 05	4Q 05	1Q 06	2Q 06	3Q 06	4Q 06	1Q 07	2Q 07	3Q 07	4Q 07
< 200mm Wafers in MOS Total	Capacity	Wafer-starts per week x 1000	287.4	267.3	242.6	265.0	264.4	230.7	204.5	182.7	303.3	326.2	326.8	294.2
		% growth re. preceding quarter	-5.6	-7.0	-9.2	9.3	-0.2	-12.8	-11.3	-10.7	66.0	7.6	0.2	-10.0
		% growth re. one year ago	-23.6	-19.3	-27.1	-13.0	-8.0	-13.7	-15.7	-31.1	14.7	41.4	59.8	61.0
	Actual Wafer-Starts	Wafer-starts per week x1000	206.7	220.2	193.9	208.0	200.5	193.1	186.7	169.7	242.3	269.2	263.4	225.1
		% growth re. preceding quarter	-23.4	6.5	-11.9	7.3	-3.6	-3.7	-3.4	-9.1	42.7	11.1	-2.2	-14.5
		% growth re. one year ago	-39.0	-29.9	-38.6	-22.9	-3.0	-12.3	-3.7	-18.4	20.9	39.4	41.1	32.6
	Utilisation	in percent (%)	71.9	82.4	79.9	78.5	75.8	83.7	91.3	92.9	79.9	82.5	80.6	76.5

			1Q 05	2Q 05	3Q 05	4Q 05	1Q 06	2Q 06	3Q 06	4Q 06	1Q 07	2Q 07	3Q 07	4Q 07
200mm wafers in MOS Total	Capacity	Wafer-starts per week x1000	912.9	934.9	980.9	984.5	998.1	1021.6	1041.8	1062.7	951.1	955.4	966.2	968.7
		% growth re. preceding quarter	2.0	2.4	4.9	0.4	1.4	2.4	2.0	2.0	-10.5	0.5	1.1	0.3
		% growth re. one year ago	10.1	9.9	11.8	10.0	9.3	9.3	6.2	7.9	-4.7	-6.5	-7.3	-8.8
	Actual Wafer-Starts	Wafer-starts per week x1000	805.9	853.4	911.3	934.6	917.8	936.7	929.1	927.5	835.1	850.0	864.0	863.9
		% growth re. preceding quarter	5.2	5.9	6.8	2.6	-1.8	2.1	-0.8	-0.2	-10.0	1.8	1.6	0.0
		% growth re. one year ago	1.2	4.6	11.6	22.0	13.9	9.8	2.0	-0.8	-9.0	-9.3	-7.0	-6.9
	Utilisation	in percent (%)	88.3	91.3	92.9	94.9	92.0	91.7	89.2	87.3	87.8	89.0	89.4	89.2

			1Q 05	2Q 05	3Q 05	4Q 05	1Q 06	2Q 06	3Q 06	4Q 06	1Q 07	2Q 07	3Q 07	4Q 07
300mm wafers in MOS Total	Capacity	WSpW x 1000 expressed in 8 inch equivalent wafers	203.6	225.5	259.4	288.7	348.5	408.2	477.0	554.4	540.0	613.8	726.1	781.9
		WSpW x 1000 expressed in numbers of wafers	90.5	100.2	115.3	128.3	154.9	181.4	212.0	246.4	240.0	272.8	322.7	347.5
		% growth re. preceding quarter	24.5	10.7	15.1	11.3	20.7	17.1	16.9	16.2	-2.6	13.7	18.3	7.7
		% growth re. one year ago	240.2	95.7	91.2	76.5	71.2	81.0	83.9	92.0	54.9	50.4	52.2	41.0
	Actual Wafer-Starts	WSpW x 1000 expressed in 8 inch equivalent wafers	189.0	204.5	240.5	281.7	335.3	394.9	419.0	471.4	491.9	581.2	694.4	766.4
		WSpW x 1000 expressed in numbers of wafers	84.0	90.9	106.9	125.2	149.0	175.5	186.2	209.5	218.6	258.3	308.6	340.6
		% growth re. preceding quarter	32.2	8.2	17.6	17.1	19.0	17.8	6.1	12.5	4.3	18.2	19.5	10.4
		% growth re. one year ago	242.9	85.5	105.2	97.2	77.4	93.1	74.2	67.3	46.7	47.2	65.7	62.6
	Utilisation	in percent (%)	92.8	90.7	92.7	97.6	96.2	96.7	87.8	85.0	91.1	94.7	95.6	98.0

Yellow coloured cells reflect revised inputs Green bordered cells contain changes resulting from revised inputs

These statistics are based on data supplied by merchant SC manufacturers who together represent the great majority of the world's SC production.