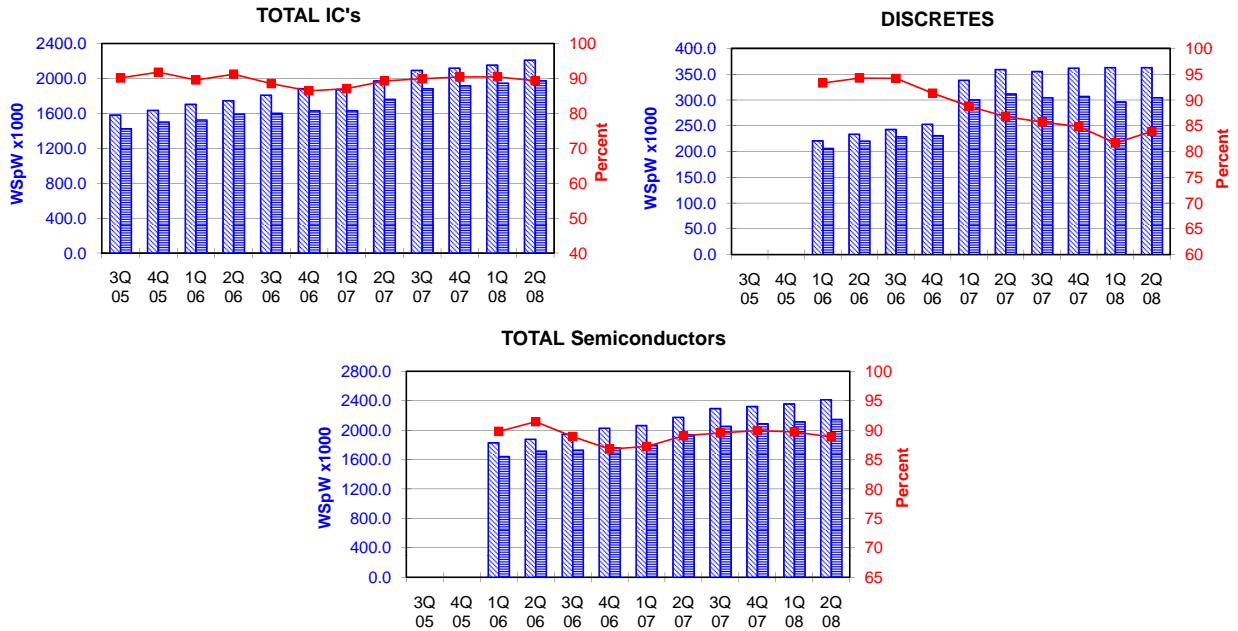


TOTAL IC's and TOTAL Semiconductors data are expressed in 8 inch equivalent wafers. DISCRETES data are expressed in 6 inch equivalent wafers. "TOTAL IC's" include Bipolar data, which were converted for this purpose from 5 inch to 8 inch equivalent wafers by the factor 0.391. "TOTAL Semiconductors" include DISCRETES data, which were converted for this purpose from 6 inch to 8 inch equivalent wafers by the factor 0.563.

WSpW = Wafer-Starts per Week.

Legends : Capacity WSpW (hatched bar), Actual WSpW (solid blue bar), Utilisation of capacity in percent (red line with square markers)



| | | 3Q 05 | 4Q 05 | 1Q 06 | 2Q 06 | 3Q 06 | 4Q 06 | 1Q 07 | 2Q 07 | 3Q 07 | 4Q 07 | 1Q 08 | 2Q 08 | |
|-------------|---------------------|--------------------------------|--------|--------|--------|--------|--------|--------|--------|--------|--------|--------|--------|--------|
| TOTAL IC's | Capacity | Wafer-starts per week x 1000 | 1580.1 | 1634.7 | 1702.8 | 1744.4 | 1808.0 | 1883.7 | 1871.9 | 1971.6 | 2092.7 | 2117.9 | 2151.9 | 2209.8 |
| | | % growth re. preceding quarter | 3.3 | 3.5 | 4.2 | 2.4 | 3.6 | 4.2 | -0.6 | 5.3 | 6.1 | 1.2 | 1.6 | 2.7 |
| | | % growth re. one year ago | 8.7 | 11.5 | 12.9 | 14.0 | 14.4 | 15.2 | 9.9 | 13.0 | 15.7 | 12.4 | 15.0 | 12.1 |
| | Actual Wafer-Starts | Wafer-starts per week x 1000 | 1424.0 | 1500.4 | 1524.6 | 1591.2 | 1600.3 | 1628.3 | 1629.9 | 1760.2 | 1881.2 | 1914.5 | 1946.6 | 1973.4 |
| | | % growth re. preceding quarter | 4.5 | 5.4 | 1.6 | 4.4 | 0.6 | 1.8 | 0.1 | 8.0 | 6.9 | 1.8 | 1.7 | 1.4 |
| | | % growth re. one year ago | 5.9 | 19.0 | 19.1 | 16.8 | 12.4 | 8.5 | 6.9 | 10.6 | 17.6 | 17.6 | 19.4 | 12.1 |
| Utilisation | in percent (%) | 90.1 | 91.8 | 89.5 | 91.2 | 88.5 | 86.4 | 87.1 | 89.3 | 89.9 | 90.4 | 90.5 | 89.3 | |

| | | 3Q 05 | 4Q 05 | 1Q 06 | 2Q 06 | 3Q 06 | 4Q 06 | 1Q 07 | 2Q 07 | 3Q 07 | 4Q 07 | 1Q 08 | 2Q 08 | |
|----------------------------|---------------------|--------------------------------|-------|-------|-------|-------|-------|-------|-------|-------|-------|-------|-------|-------|
| DISCRETES (6 inch equivs.) | Capacity | Wafer-starts per week x1000 | | | 220.8 | 233.8 | 242.9 | 252.9 | 338.5 | 359.3 | 355.3 | 362.0 | 363.0 | 362.9 |
| | | % growth re. preceding quarter | | | | 5.9 | 3.9 | 4.1 | n.a. | 6.1 | -1.1 | 1.9 | 0.3 | 0.0 |
| | | % growth re. one year ago | | | | | | | n.a. | n.a. | n.a. | n.a. | 7.2 | 1.0 |
| | Actual Wafer-Starts | Wafer-starts per week x1000 | | | 206.0 | 220.4 | 228.8 | 231.0 | 300.6 | 311.8 | 304.6 | 307.1 | 296.4 | 304.5 |
| | | % growth re. preceding quarter | | | | 7.0 | 3.8 | 1.0 | n.a. | 3.7 | -2.3 | 0.8 | -3.5 | 2.7 |
| | | % growth re. one year ago | | | | | | | n.a. | n.a. | n.a. | n.a. | -1.4 | -2.3 |
| Utilisation | in percent (%) | | | 93.3 | 94.3 | 94.2 | 91.3 | 88.8 | 86.8 | 85.7 | 84.8 | 81.7 | 83.9 | |

| | | 3Q 05 | 4Q 05 | 1Q 06 | 2Q 06 | 3Q 06 | 4Q 06 | 1Q 07 | 2Q 07 | 3Q 07 | 4Q 07 | 1Q 08 | 2Q 08 | |
|----------------------|---------------------|--------------------------------|-------|-------|--------|--------|--------|--------|--------|--------|--------|--------|--------|--------|
| TOTAL Semiconductors | Capacity | Wafer-starts per week x1000 | | | 1827.2 | 1876.1 | 1944.8 | 2026.1 | 2062.5 | 2173.9 | 2292.8 | 2321.7 | 2356.3 | 2414.1 |
| | | % growth re. preceding quarter | | | | 2.7 | 3.7 | 4.2 | 1.8 | 5.4 | 5.5 | 1.3 | 1.5 | 2.5 |
| | | % growth re. one year ago | | | | | | | n.a. | n.a. | n.a. | n.a. | 14.2 | 11.1 |
| | Actual Wafer-Starts | Wafer-starts per week x1000 | | | 1640.6 | 1715.3 | 1729.1 | 1758.4 | 1799.1 | 1935.8 | 2052.7 | 2087.4 | 2113.5 | 2144.9 |
| | | % growth re. preceding quarter | | | | 4.6 | 0.8 | 1.7 | 2.3 | 7.6 | 6.0 | 1.7 | 1.2 | 1.5 |
| | | % growth re. one year ago | | | | | | | n.a. | n.a. | n.a. | n.a. | 17.5 | 10.8 |
| Utilisation | in percent (%) | | | 89.8 | 91.4 | 88.9 | 86.8 | 87.2 | 89.0 | 89.5 | 89.9 | 89.7 | 88.8 | |

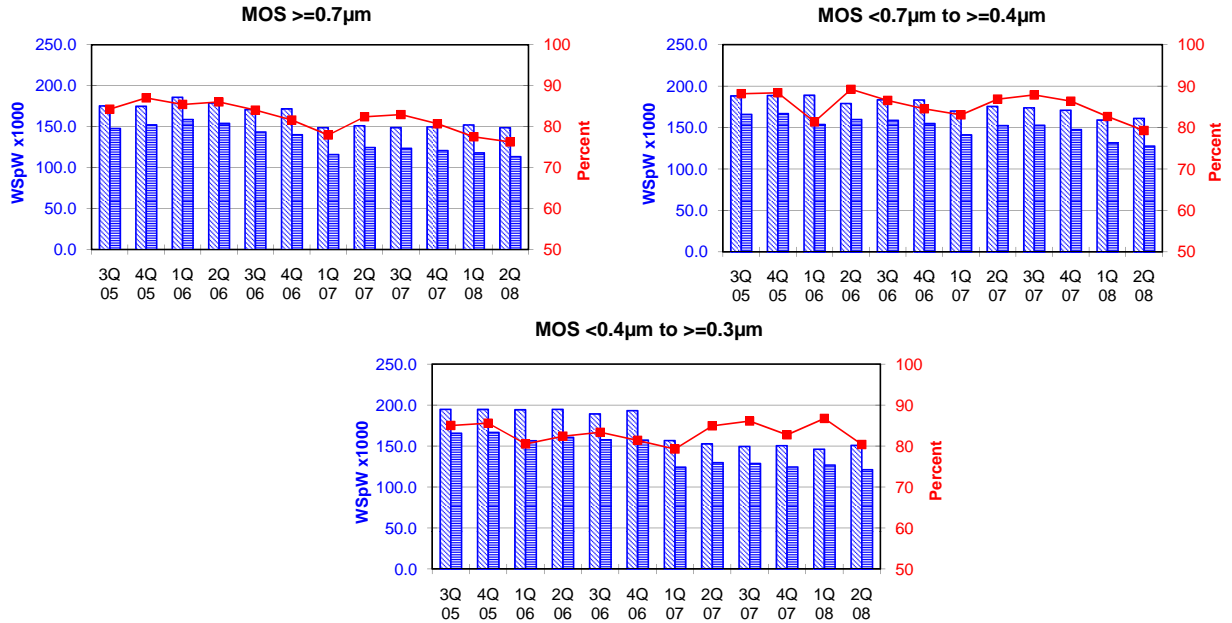
Green bordered cells contain changes resulting from revised inputs

These statistics are based on data supplied by merchant SC manufacturers who together represent the great majority of the world's SC production.

All MOS data are expressed in 8 inch equivalent wafers.

WSpW = Wafer-Starts per Week.

Legends : Capacity WSpW Actual WSpW Utilisation of capacity in percent



| | | | 3Q 05 | 4Q 05 | 1Q 06 | 2Q 06 | 3Q 06 | 4Q 06 | 1Q 07 | 2Q 07 | 3Q 07 | 4Q 07 | 1Q 08 | 2Q 08 |
|-----------------------|---------------------|--------------------------------|-------|-------|-------|-------|-------|-------|-------|-------|-------|-------|-------|-------|
| MOS >=0.7µm | Capacity | Wafer-starts per week x1000 | 175.4 | 174.9 | 185.9 | 179.0 | 170.9 | 171.8 | 148.8 | 151.2 | 148.9 | 149.8 | 152.2 | 148.8 |
| | | % growth re. preceding quarter | 7.7 | -0.3 | 6.3 | -3.7 | -4.5 | 0.5 | -13.4 | 1.6 | -1.5 | 0.6 | 1.6 | -2.2 |
| | | % growth re. one year ago | -15.7 | -2.1 | 6.5 | 9.9 | -2.6 | -1.8 | -20.0 | -15.5 | -12.9 | -12.8 | 2.3 | -1.6 |
| | Actual Wafer-Starts | Wafer-starts per week x1000 | 147.8 | 152.2 | 158.8 | 154.0 | 143.6 | 140.2 | 116.0 | 124.6 | 123.5 | 120.9 | 118.0 | 113.5 |
| | | % growth re. preceding quarter | 9.6 | 3.0 | 4.3 | -3.0 | -6.8 | -2.4 | -17.3 | 7.4 | -0.9 | -2.1 | -2.4 | -3.8 |
| Utilisation | in percent (%) | 84.3 | 87.0 | 85.4 | 86.0 | 84.0 | 81.6 | 78.0 | 82.4 | 82.9 | 80.7 | 77.5 | 76.3 | |
| MOS <0.7µm to >=0.4µm | Capacity | Wafer-starts per week x1000 | 188.2 | 188.7 | 189.0 | 179.0 | 183.5 | 183.3 | 170.0 | 175.5 | 173.8 | 170.9 | 159.1 | 161.1 |
| | | % growth re. preceding quarter | 0.5 | 0.3 | 0.2 | -5.3 | 2.5 | -0.1 | -7.3 | 3.2 | -1.0 | -1.7 | -6.9 | 1.3 |
| | | % growth re. one year ago | 9.2 | 10.0 | -3.5 | -4.4 | -2.5 | -2.9 | -10.1 | -2.0 | -5.3 | -6.8 | -6.4 | -8.2 |
| | Actual Wafer-Starts | Wafer-starts per week x1000 | 165.9 | 166.8 | 153.8 | 159.7 | 158.8 | 154.9 | 141.2 | 152.4 | 152.7 | 147.6 | 131.5 | 127.7 |
| | | % growth re. preceding quarter | -1.7 | 0.5 | -7.8 | 3.8 | -0.6 | -2.5 | -8.8 | 7.9 | 0.2 | -3.3 | -10.9 | -2.9 |
| Utilisation | in percent (%) | 88.2 | 88.4 | 81.4 | 89.2 | 86.5 | 84.5 | 83.1 | 86.8 | 87.9 | 86.4 | 82.7 | 79.3 | |
| MOS <0.4µm to >=0.3µm | Capacity | Wafer-starts per week x1000 | 194.8 | 194.7 | 194.3 | 194.8 | 189.2 | 193.2 | 156.7 | 152.7 | 149.5 | 150.5 | 146.2 | 150.8 |
| | | % growth re. preceding quarter | 5.1 | -0.1 | -0.2 | 0.3 | -2.9 | 2.1 | -18.9 | -2.6 | -2.1 | 0.7 | -2.9 | 3.1 |
| | | % growth re. one year ago | -3.0 | -0.8 | 3.6 | 5.1 | -2.9 | -0.8 | -19.4 | -21.6 | -21.0 | -22.1 | -6.7 | -1.2 |
| | Actual Wafer-Starts | Wafer-starts per week x1000 | 165.6 | 166.6 | 156.4 | 160.5 | 157.7 | 157.2 | 124.2 | 129.7 | 128.7 | 124.5 | 126.8 | 121.2 |
| | | % growth re. preceding quarter | 5.5 | 0.6 | -6.1 | 2.6 | -1.7 | -0.3 | -21.0 | 4.4 | -0.8 | -3.3 | 1.8 | -4.4 |
| Utilisation | in percent (%) | 85.0 | 85.6 | 80.5 | 82.4 | 83.4 | 81.4 | 79.3 | 84.9 | 86.1 | 82.7 | 86.7 | 80.4 | |

Yellow coloured cells reflect revised inputs

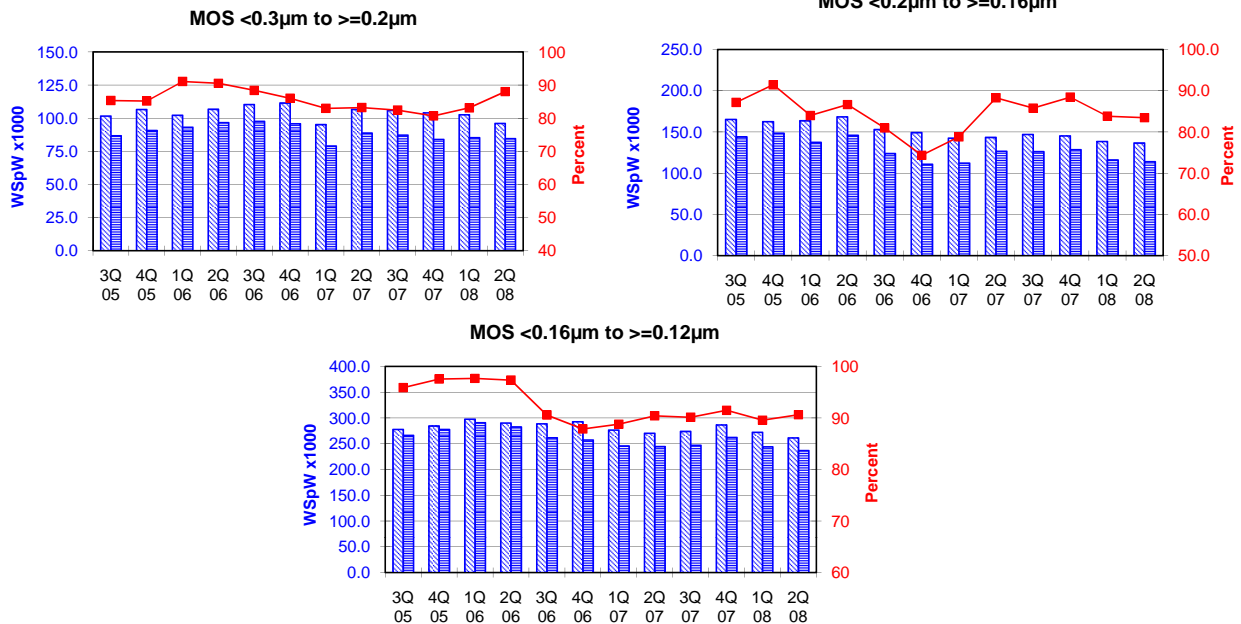
Green bordered cells contain changes resulting from revised inputs

These statistics are based on data supplied by merchant SC manufacturers who together represent the great majority of the world's SC production.

All MOS data are expressed in 8 inch equivalent wafers.

WSpW = Wafer-Starts per Week.

Legends : Capacity WSpW Actual WSpW Utilisation of capacity in percent



| | | | 3Q 05 | 4Q 05 | 1Q 06 | 2Q 06 | 3Q 06 | 4Q 06 | 1Q 07 | 2Q 07 | 3Q 07 | 4Q 07 | 1Q 08 | 2Q 08 |
|-----------------------|---------------------|--------------------------------|-------|-------|-------|-------|-------|-------|-------|-------|-------|-------|-------|-------|
| MOS <0.3µm to >=0.2µm | Capacity | Wafer-starts per week x1000 | 101.7 | 106.6 | 102.3 | 106.8 | 110.4 | 111.5 | 95.2 | 106.7 | 105.9 | 104.1 | 102.6 | 96.1 |
| | | % growth re. preceding quarter | -3.2 | 4.8 | -4.0 | 4.4 | 3.4 | 1.0 | -14.6 | 12.1 | -0.7 | -1.7 | -1.4 | -6.3 |
| | | % growth re. one year ago | -4.1 | 2.1 | -3.4 | 1.6 | 8.6 | 4.6 | -6.9 | -0.1 | -4.1 | -6.6 | 7.8 | -9.9 |
| | Actual Wafer-Starts | Wafer-starts per week x1000 | 86.8 | 90.8 | 93.2 | 96.7 | 97.6 | 95.9 | 79.0 | 88.8 | 87.3 | 84.0 | 85.3 | 84.6 |
| | | % growth re. preceding quarter | 4.6 | 4.6 | 2.6 | 3.8 | 0.9 | -1.7 | -17.6 | 12.4 | -1.7 | -3.8 | 1.5 | -0.8 |
| | | % growth re. one year ago | -8.0 | 8.7 | 20.4 | 16.5 | 12.4 | 5.6 | -15.2 | -8.2 | -10.6 | -12.4 | 8.0 | -4.7 |
| | Utilisation | in percent (%) | 85.3 | 85.2 | 91.1 | 90.5 | 88.4 | 86.0 | 83.0 | 83.2 | 82.4 | 80.7 | 83.1 | 88.0 |

| | | | 3Q 05 | 4Q 05 | 1Q 06 | 2Q 06 | 3Q 06 | 4Q 06 | 1Q 07 | 2Q 07 | 3Q 07 | 4Q 07 | 1Q 08 | 2Q 08 |
|------------------------|---------------------|--------------------------------|-------|-------|-------|-------|-------|-------|-------|-------|-------|-------|-------|-------|
| MOS <0.2µm to >=0.16µm | Capacity | Wafer-starts per week x1000 | 165.2 | 162.5 | 163.6 | 168.4 | 152.9 | 149.2 | 142.5 | 143.4 | 147.0 | 145.3 | 138.4 | 136.6 |
| | | % growth re. preceding quarter | -4.1 | -1.6 | 0.7 | 2.9 | -9.2 | -2.4 | -4.5 | 0.6 | 2.5 | -1.2 | -4.7 | -1.3 |
| | | % growth re. one year ago | -14.4 | -21.5 | -1.2 | -2.2 | -7.4 | -8.2 | -12.9 | -14.8 | -3.9 | -2.6 | -2.9 | -4.7 |
| | Actual Wafer-Starts | Wafer-starts per week x1000 | 144.0 | 148.6 | 137.4 | 145.9 | 123.8 | 110.9 | 112.3 | 126.6 | 126.1 | 128.5 | 116.0 | 114.0 |
| | | % growth re. preceding quarter | -5.6 | 3.2 | -7.5 | 6.2 | -15.1 | -10.4 | 1.3 | 12.7 | -0.4 | 1.9 | -9.7 | -1.7 |
| | | % growth re. one year ago | -17.1 | -14.9 | 1.9 | -4.4 | -14.0 | -25.4 | -18.3 | -13.2 | 1.9 | 15.9 | 3.3 | -10.0 |
| | Utilisation | in percent (%) | 87.2 | 91.4 | 84.0 | 86.6 | 81.0 | 74.3 | 78.8 | 88.3 | 85.8 | 88.4 | 83.8 | 83.5 |

| | | | 3Q 05 | 4Q 05 | 1Q 06 | 2Q 06 | 3Q 06 | 4Q 06 | 1Q 07 | 2Q 07 | 3Q 07 | 4Q 07 | 1Q 08 | 2Q 08 |
|-------------------------|---------------------|--------------------------------|-------|-------|-------|-------|-------|-------|-------|-------|-------|-------|-------|-------|
| MOS <0.16µm to >=0.12µm | Capacity | Wafer-starts per week x 1000 | 277.9 | 284.6 | 297.8 | 290.4 | 288.8 | 292.9 | 276.7 | 270.4 | 274.0 | 286.7 | 272.4 | 261.4 |
| | | % growth re. preceding quarter | -2.8 | 2.4 | 4.6 | -2.5 | -0.6 | 1.4 | -5.5 | -2.3 | 1.3 | 4.6 | -5.0 | -4.0 |
| | | % growth re. one year ago | | | 4.2 | 1.5 | 3.9 | 2.9 | -7.1 | -6.9 | -5.1 | -2.1 | -1.6 | -3.3 |
| | Actual Wafer-Starts | Wafer-starts per week x1000 | 266.5 | 277.7 | 290.9 | 282.7 | 261.6 | 257.4 | 245.7 | 244.5 | 247.0 | 262.3 | 244.0 | 236.9 |
| | | % growth re. preceding quarter | -0.6 | 4.2 | 4.8 | -2.8 | -7.5 | -1.6 | -4.5 | -0.5 | 1.0 | 6.2 | -7.0 | -2.9 |
| | | % growth re. one year ago | | | 9.7 | 5.4 | -1.8 | -7.3 | -15.5 | -13.5 | -5.6 | 1.9 | -0.7 | -3.1 |
| | Utilisation | in percent (%) | 95.9 | 97.6 | 97.7 | 97.3 | 90.6 | 87.9 | 88.8 | 90.4 | 90.1 | 91.5 | 89.6 | 90.6 |

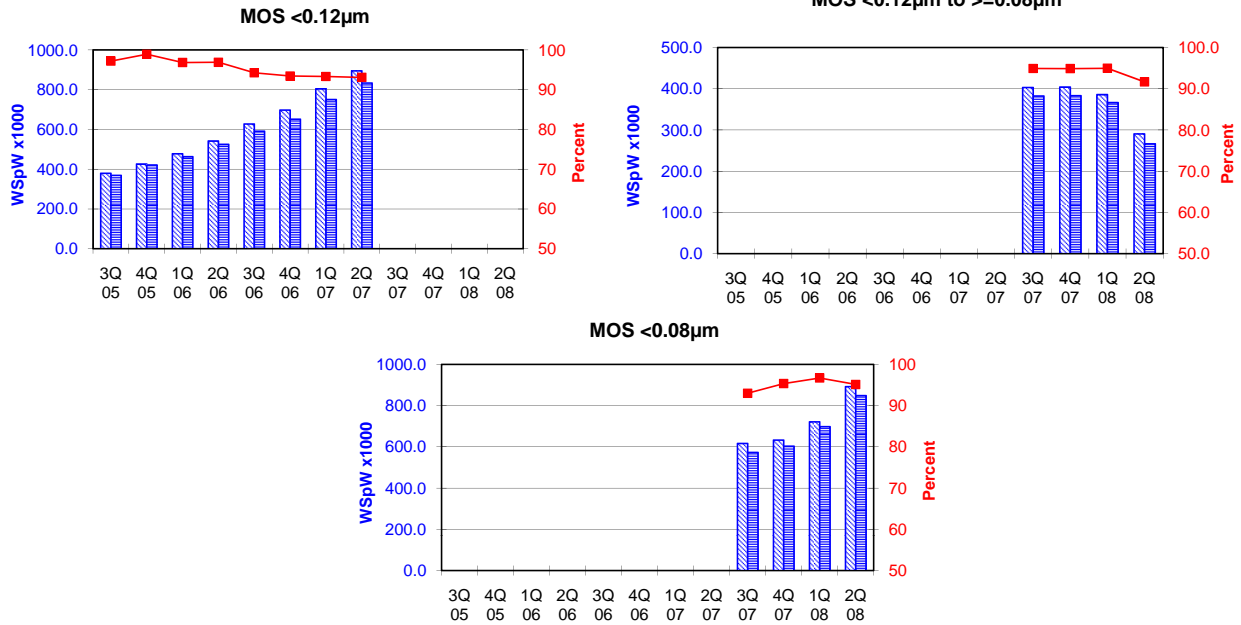
Yellow coloured cells reflect revised inouts Green bordered cells contain changes resulting from revised inputs

These statistics are based on data supplied by merchant SC manufacturers who together represent the great majority of the world's SC production.

All MOS data are expressed in 8 inch equivalent wafers.

WSpW = Wafer-Starts per Week.

Legends : Capacity WSpW Actual WSpW Utilisation of capacity in percent



| | | 3Q 05 | 4Q 05 | 1Q 06 | 2Q 06 | 3Q 06 | 4Q 06 | 1Q 07 | 2Q 07 | 3Q 07 | 4Q 07 | 1Q 08 | 2Q 08 | |
|-------------|---------------------|--------------------------------|-------|-------|-------|-------|-------|-------|-------|-------|-------|-------|-------|--|
| MOS <0.12µm | Capacity | Wafer-starts per week x1000 | 379.7 | 426.2 | 478.1 | 542.0 | 627.6 | 697.9 | 804.5 | 895.5 | | | | |
| | | % growth re. preceding quarter | 15.5 | 12.2 | 12.2 | 13.4 | 15.8 | 11.2 | 15.3 | 11.3 | | | | |
| | | % growth re. one year ago | | | 65.2 | 64.8 | 65.3 | 63.7 | 68.3 | 65.2 | | | | |
| | Actual Wafer-Starts | Wafer-starts per week x1000 | 369.1 | 421.6 | 463.0 | 525.2 | 591.6 | 652.1 | 750.8 | 833.8 | | | | |
| | | % growth re. preceding quarter | 17.6 | 14.2 | 9.8 | 13.4 | 12.6 | 10.2 | 15.1 | 11.1 | | | | |
| | | % growth re. one year ago | | | 67.1 | 67.4 | 60.3 | 54.7 | 62.2 | 58.8 | | | | |
| Utilisation | in percent (%) | 97.2 | 98.9 | 96.8 | 96.9 | 94.3 | 93.4 | 93.3 | 93.1 | | | | | |

| | | 3Q 07 | 4Q 07 | 1Q 08 | 2Q 08 | |
|-------------------------|---------------------|--------------------------------|-------|-------|-------|-------|
| MOS <0.12µm to >=0.08µm | Capacity | Wafer-starts per week x1000 | 403.1 | 404.1 | 385.8 | 290.6 |
| | | % growth re. preceding quarter | n.a. | 0.2 | -4.5 | -24.7 |
| | | % growth re. one year ago | n.a. | n.a. | n.a. | n.a. |
| | Actual Wafer-Starts | Wafer-starts per week x1000 | 382.6 | 383.4 | 366.4 | 266.4 |
| | | % growth re. preceding quarter | n.a. | 0.2 | -4.4 | -27.3 |
| | | % growth re. one year ago | n.a. | n.a. | n.a. | n.a. |
| Utilisation | in percent (%) | 94.9 | 94.9 | 95.0 | 91.7 | |

| | | 3Q 07 | 4Q 07 | 1Q 08 | 2Q 08 | |
|-------------|---------------------|--------------------------------|-------|-------|-------|-------|
| MOS <0.08µm | Capacity | Wafer-starts per week x1000 | 616.9 | 633.4 | 722.1 | 892.8 |
| | | % growth re. preceding quarter | n.a. | 2.7 | 14.0 | 23.6 |
| | | % growth re. one year ago | n.a. | n.a. | n.a. | n.a. |
| | Actual Wafer-Starts | Wafer-starts per week x1000 | 573.8 | 604.1 | 698.5 | 849.5 |
| | | % growth re. preceding quarter | n.a. | 5.3 | 15.6 | 21.6 |
| | | % growth re. one year ago | n.a. | n.a. | n.a. | n.a. |
| Utilisation | in percent (%) | 93.0 | 95.4 | 96.7 | 95.2 | |

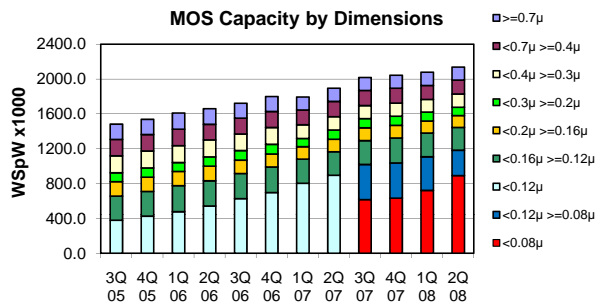
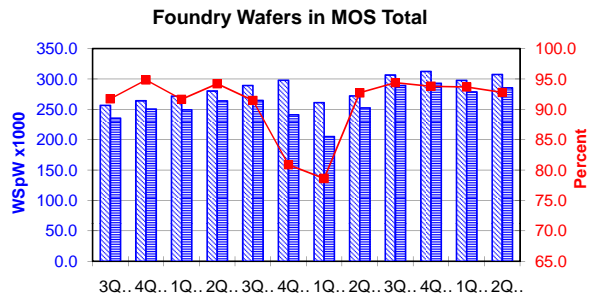
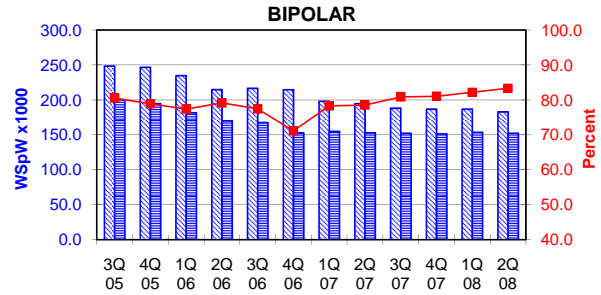
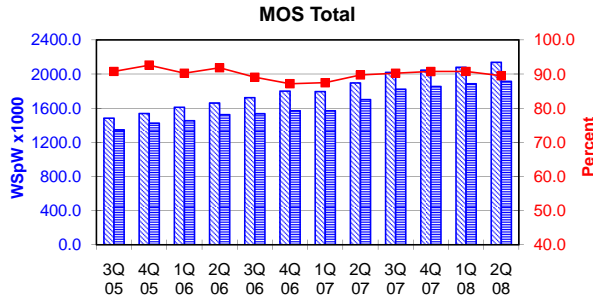
Yellow coloured cells reflect revised inputs Green bordered cells contain changes resulting from revised inputs

These statistics are based on data supplied by merchant SC manufacturers who together represent the great majority of the world's SC production.

All MOS data are expressed in 8 inch equivalent wafers. Bipolar data are expressed in 5 inch equivalent wafers.

WSpW = Wafer-Starts per Week.

Legends : Capacity WSpW Actual WSpW Utilisation of capacity in percent



| | | | 3Q 05 | 4Q 05 | 1Q 06 | 2Q 06 | 3Q 06 | 4Q 06 | 1Q 07 | 2Q 07 | 3Q 07 | 4Q 07 | 1Q 08 | 2Q 08 |
|-------------|---------------------|--------------------------------|--------|--------|--------|--------|--------|--------|--------|--------|--------|--------|--------|--------|
| MOS Total | Capacity | Wafer-starts per week x 1000 | 1482.9 | 1538.2 | 1611.0 | 1660.4 | 1723.3 | 1799.8 | 1794.4 | 1895.4 | 2019.1 | 2044.8 | 2078.8 | 2138.2 |
| | | % growth re. preceding quarter | 3.9 | 3.7 | 4.7 | 3.1 | 3.8 | 4.4 | -0.3 | 5.6 | 6.5 | 1.3 | 1.7 | 2.9 |
| | Actual Wafer-Starts | Wafer-starts per week x1000 | 1345.7 | 1424.3 | 1453.5 | 1524.7 | 1534.7 | 1568.6 | 1569.2 | 1700.4 | 1821.7 | 1855.3 | 1886.5 | 1913.8 |
| | | % growth re. preceding quarter | 5.3 | 5.8 | 2.1 | 4.9 | 0.7 | 2.2 | 0.0 | 8.4 | 7.1 | 1.8 | 1.7 | 1.4 |
| Utilisation | | in percent (%) | 90.7 | 92.6 | 90.2 | 91.8 | 89.1 | 87.2 | 87.4 | 89.7 | 90.2 | 90.7 | 90.7 | 89.5 |

| | | | 3Q 05 | 4Q 05 | 1Q 06 | 2Q 06 | 3Q 06 | 4Q 06 | 1Q 07 | 2Q 07 | 3Q 07 | 4Q 07 | 1Q 08 | 2Q 08 |
|--------------------------|---------------------|--------------------------------|-------|-------|-------|-------|-------|-------|-------|-------|-------|-------|-------|-------|
| BIPOLAR (5 inch equivs.) | Capacity | Wafer-starts per week x1000 | 248.7 | 246.8 | 234.9 | 214.9 | 216.7 | 214.7 | 198.2 | 194.8 | 188.3 | 186.9 | 187.0 | 183.0 |
| | | % growth re. preceding quarter | -5.0 | -0.8 | -4.8 | -8.5 | 0.8 | -0.9 | -7.7 | -1.7 | -3.3 | -0.7 | 0.1 | -2.1 |
| | Actual Wafer-Starts | Wafer-starts per week x1000 | 200.3 | 194.7 | 181.8 | 170.1 | 167.8 | 152.8 | 155.2 | 153.0 | 152.3 | 151.5 | 153.7 | 152.5 |
| | | % growth re. preceding quarter | -7.2 | -2.8 | -6.6 | -6.4 | -1.4 | -8.9 | 1.6 | -1.4 | -0.5 | -0.5 | 1.5 | -0.8 |
| Utilisation | | in percent (%) | 80.5 | 78.9 | 77.4 | 79.2 | 77.4 | 71.2 | 78.3 | 78.5 | 80.9 | 81.1 | 82.2 | 83.3 |

| | | | 3Q 05 | 4Q 05 | 1Q 06 | 2Q 06 | 3Q 06 | 4Q 06 | 1Q 07 | 2Q 07 | 3Q 07 | 4Q 07 | 1Q 08 | 2Q 08 |
|-----------------------------|---------------------|--------------------------------|-------|-------|-------|-------|-------|-------|-------|-------|-------|-------|-------|-------|
| Foundry Wafers in MOS Total | Capacity | Wafer-starts per week x1000 | 256.7 | 264.2 | 272.0 | 280.3 | 289.4 | 298.1 | 261.1 | 272.2 | 306.6 | 312.5 | 297.7 | 307.6 |
| | | % growth re. preceding quarter | 1.7 | 2.9 | 3.0 | 3.1 | 3.2 | 3.0 | -12.4 | 4.3 | 12.6 | 1.9 | -4.7 | 3.3 |
| | Actual Wafer-Starts | Wafer-starts per week x1000 | 235.5 | 250.6 | 249.3 | 264.1 | 264.7 | 241.1 | 205.3 | 252.4 | 289.4 | 293.1 | 278.9 | 285.4 |
| | | % growth re. preceding quarter | 12.4 | 6.4 | -0.5 | 5.9 | 0.2 | -8.9 | -14.8 | 22.9 | 14.7 | 1.3 | -4.8 | 2.3 |
| Utilisation | | in percent (%) | 91.7 | 94.9 | 91.7 | 94.2 | 91.5 | 80.9 | 78.6 | 92.7 | 94.4 | 93.8 | 93.7 | 92.8 |

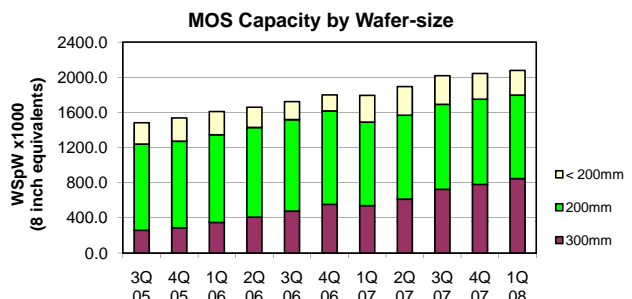
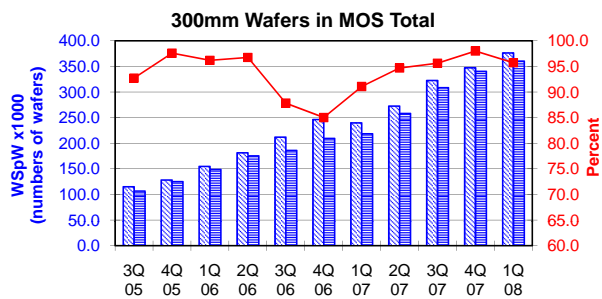
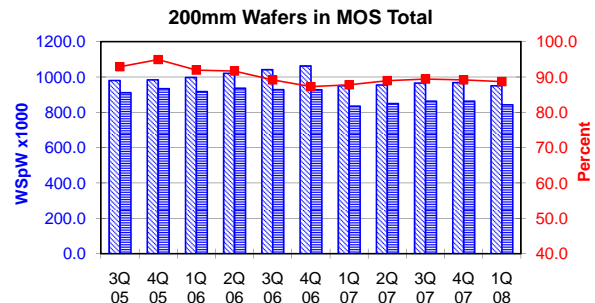
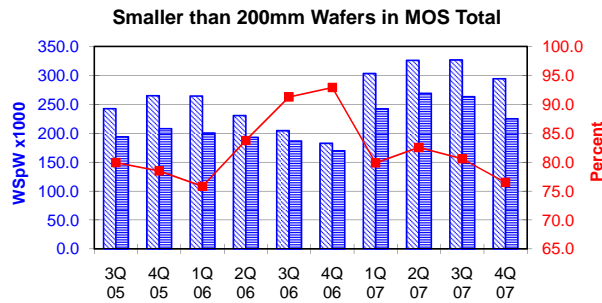
Yellow coloured cells reflect revised inputs Green bordered cells contain changes resulting from revised inputs

These statistics are based on data supplied by merchant SC manufacturers who together represent the great majority of the world's SC production.

All MOS data are expressed in 8 inch equivalent wafers, except for the 300mm wafer data where annotated as "numbers of wafers".

WSpW = Wafer-Starts per Week.

Legends : Capacity WSpW Actual WSpW Utilisation of capacity in percent



| | | 3Q 05 | 4Q 05 | 1Q 06 | 2Q 06 | 3Q 06 | 4Q 06 | 1Q 07 | 2Q 07 | 3Q 07 | 4Q 07 | 1Q 08 | 2Q 08 | |
|-----------------------------|----------------------------|--------------------------------|-------|-------|-------|-------|-------|-------|-------|-------|-------|-------|-------|-------|
| < 200mm Wafers in MOS Total | Capacity | Wafer-starts per week x 1000 | 242.6 | 265.0 | 264.4 | 230.7 | 204.5 | 182.7 | 303.3 | 326.2 | 326.8 | 294.2 | 281.2 | 291.0 |
| | | % growth re. preceding quarter | -9.2 | 9.3 | -0.2 | -12.8 | -11.3 | -10.7 | 66.0 | 7.6 | 0.2 | -10.0 | -4.4 | 3.5 |
| | | % growth re. one year ago | -27.1 | -13.0 | -8.0 | -13.7 | -15.7 | -31.1 | 14.7 | 41.4 | 59.8 | 61.0 | -7.3 | -10.8 |
| | Actual Wafer-Starts | Wafer-starts per week x1000 | 193.9 | 208.0 | 200.5 | 193.1 | 186.7 | 169.7 | 242.3 | 269.2 | 263.4 | 225.1 | 232.5 | 224.1 |
| | | % growth re. preceding quarter | -11.9 | 7.3 | -3.6 | -3.7 | -3.4 | -9.1 | 42.7 | 11.1 | -2.2 | -14.5 | 3.3 | -3.6 |
| | | % growth re. one year ago | -38.6 | -22.9 | -3.0 | -12.3 | -3.7 | -18.4 | 20.9 | 39.4 | 41.1 | 32.6 | -4.0 | -16.8 |
| | Utilisation | in percent (%) | 79.9 | 78.5 | 75.8 | 83.7 | 91.3 | 92.9 | 79.9 | 82.5 | 80.6 | 76.5 | 82.7 | 77.0 |

| | | 980.9 | 984.5 | 998.1 | 1021.6 | 1041.8 | 1062.7 | 951.1 | 955.4 | 966.2 | 968.7 | 950.5 | 897.3 | |
|---------------------------|----------------------------|--------------------------------|-------|-------|--------|--------|--------|--------|-------|-------|-------|-------|-------|-------|
| 200mm wafers in MOS Total | Capacity | Wafer-starts per week x1000 | 980.9 | 984.5 | 998.1 | 1021.6 | 1041.8 | 1062.7 | 951.1 | 955.4 | 966.2 | 968.7 | 950.5 | 897.3 |
| | | % growth re. preceding quarter | 4.9 | 0.4 | 1.4 | 2.4 | 2.0 | 2.0 | -10.5 | 0.5 | 1.1 | 0.3 | -1.9 | -5.6 |
| | | % growth re. one year ago | 11.8 | 10.0 | 9.3 | 9.3 | 6.2 | 7.9 | -4.7 | -6.5 | -7.3 | -8.8 | -0.1 | -6.1 |
| | Actual Wafer-Starts | Wafer-starts per week x1000 | 911.3 | 934.6 | 917.8 | 936.7 | 929.1 | 927.5 | 835.1 | 850.0 | 864.0 | 863.9 | 843.1 | 791.3 |
| | | % growth re. preceding quarter | 6.8 | 2.6 | -1.8 | 2.1 | -0.8 | -0.2 | -10.0 | 1.8 | 1.6 | 0.0 | -2.4 | -6.1 |
| | | % growth re. one year ago | 11.6 | 22.0 | 13.9 | 9.8 | 2.0 | -0.8 | -9.0 | -9.3 | -7.0 | -6.9 | 1.0 | -6.9 |
| | Utilisation | in percent (%) | 92.9 | 94.9 | 92.0 | 91.7 | 89.2 | 87.3 | 87.8 | 89.0 | 89.4 | 89.2 | 88.7 | 88.2 |

| | | 259.4 | 288.7 | 348.5 | 408.2 | 477.0 | 554.4 | 540.0 | 613.8 | 726.1 | 781.9 | 847.1 | 950.0 | |
|---------------------------|----------------------------|---|-------|-------|-------|-------|-------|-------|-------|-------|-------|-------|-------|-------|
| 300mm wafers in MOS Total | Capacity | WSpW x 1000 expressed in 8 inch equivalent wafers | 259.4 | 288.7 | 348.5 | 408.2 | 477.0 | 554.4 | 540.0 | 613.8 | 726.1 | 781.9 | 847.1 | 950.0 |
| | | WSpW x 1000 expressed in numbers of wafers | 115.3 | 128.3 | 154.9 | 181.4 | 212.0 | 246.4 | 240.0 | 272.8 | 322.7 | 347.5 | 376.5 | 422.2 |
| | | % growth re. preceding quarter | 15.1 | 11.3 | 20.7 | 17.1 | 16.9 | 16.2 | -2.6 | 13.7 | 18.3 | 7.7 | 8.3 | 12.1 |
| | | % growth re. one year ago | 91.2 | 76.5 | 71.2 | 81.0 | 83.9 | 92.0 | 54.9 | 50.4 | 52.2 | 41.0 | 56.9 | 54.8 |
| | Actual Wafer-Starts | WSpW x 1000 expressed in 8 inch equivalent wafers | 240.5 | 281.7 | 335.3 | 394.9 | 419.0 | 471.4 | 491.9 | 581.2 | 694.4 | 766.4 | 810.9 | 898.4 |
| | | WSpW x 1000 expressed in numbers of wafers | 106.9 | 125.2 | 149.0 | 175.5 | 186.2 | 209.5 | 218.6 | 258.3 | 308.6 | 340.6 | 360.4 | 399.3 |
| | | % growth re. preceding quarter | 17.6 | 17.1 | 19.0 | 17.8 | 6.1 | 12.5 | 4.3 | 18.2 | 19.5 | 10.4 | 5.8 | 10.8 |
| | | % growth re. one year ago | 105.2 | 97.2 | 77.4 | 93.1 | 74.2 | 67.3 | 46.7 | 47.2 | 65.7 | 62.6 | 64.9 | 54.6 |
| | Utilisation | in percent (%) | 92.7 | 97.6 | 96.2 | 96.7 | 87.8 | 85.0 | 91.1 | 94.7 | 95.6 | 98.0 | 95.7 | 94.6 |

Yellow coloured cells reflect revised inputs Green bordered cells contain changes resulting from revised inputs

These statistics are based on data supplied by merchant SC manufacturers who together represent the great majority of the world's SC production.