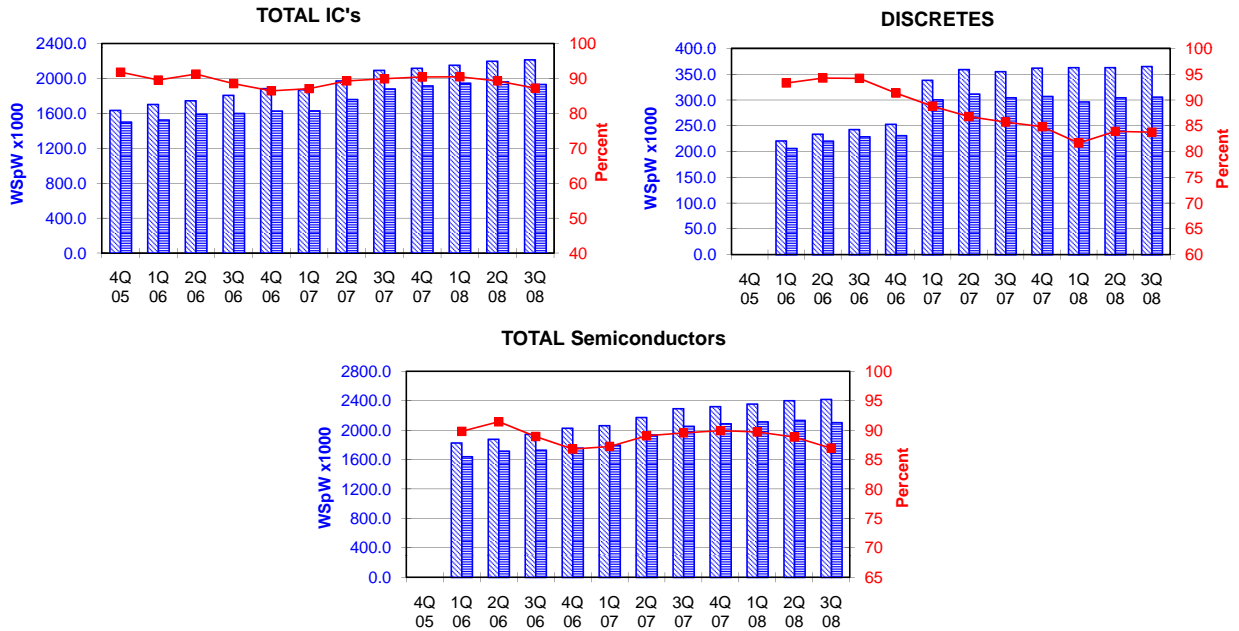


TOTAL IC's and TOTAL Semiconductors data are expressed in 8 inch equivalent wafers. DISCRETES data are expressed in 6 inch equivalent wafers. "TOTAL IC's" include Bipolar data, which were converted for this purpose from 5 inch to 8 inch equivalent wafers by the factor 0.391. "TOTAL Semiconductors" include DISCRETES data, which were converted for this purpose from 6 inch to 8 inch equivalent wafers by the factor 0.563.

WSpW = Wafer-Starts per Week.

Legends : Capacity WSpW Actual WSpW Utilisation of capacity in percent



		4Q 05	1Q 06	2Q 06	3Q 06	4Q 06	1Q 07	2Q 07	3Q 07	4Q 07	1Q 08	2Q 08	3Q 08	
TOTAL IC's	Capacity	Wafer-starts per week x 1000	1634.7	1702.8	1744.4	1808.0	1883.7	1871.9	1971.6	2092.7	2117.9	2151.9	2197.8	2214.2
		% growth re. preceding quarter	3.5	4.2	2.4	3.6	4.2	-0.6	5.3	6.1	1.2	1.6	2.1	0.7
		% growth re. one year ago	11.5	12.9	14.0	14.4	15.2	9.9	13.0	15.7	12.4	15.0	11.5	5.8
	Actual Wafer-Starts	Wafer-starts per week x 1000	1500.4	1524.6	1591.2	1600.3	1628.3	1629.9	1760.2	1881.2	1914.5	1946.6	1962.1	1931.2
		% growth re. preceding quarter	5.4	1.6	4.4	0.6	1.8	0.1	8.0	6.9	1.8	1.7	0.8	-1.6
		% growth re. one year ago	19.0	19.1	16.8	12.4	8.5	6.9	10.6	17.6	17.6	19.4	11.5	2.7
Utilisation	in percent (%)	91.8	89.5	91.2	88.5	86.4	87.1	89.3	89.9	90.4	90.5	89.3	87.2	

		4Q 05	1Q 06	2Q 06	3Q 06	4Q 06	1Q 07	2Q 07	3Q 07	4Q 07	1Q 08	2Q 08	3Q 08	
DISCRETES (6 inch equivs.)	Capacity	Wafer-starts per week x1000		220.8	233.8	242.9	252.9	338.5	359.3	355.3	362.0	363.0	362.9	365.1
		% growth re. preceding quarter			5.9	3.9	4.1	n.a.	6.1	-1.1	1.9	0.3	0.0	0.6
		% growth re. one year ago						n.a.	n.a.	n.a.	n.a.	7.2	1.0	2.8
	Actual Wafer-Starts	Wafer-starts per week x1000		206.0	220.4	228.8	231.0	300.6	311.8	304.6	307.1	296.4	304.5	305.8
		% growth re. preceding quarter			7.0	3.8	1.0	n.a.	3.7	-2.3	0.8	-3.5	2.7	0.4
		% growth re. one year ago						n.a.	n.a.	n.a.	n.a.	-1.4	-2.3	0.4
Utilisation	in percent (%)		93.3	94.3	94.2	91.3	88.8	86.8	85.7	84.8	81.7	83.9	83.8	

		4Q 05	1Q 06	2Q 06	3Q 06	4Q 06	1Q 07	2Q 07	3Q 07	4Q 07	1Q 08	2Q 08	3Q 08	
TOTAL Semiconductors	Capacity	Wafer-starts per week x1000		1827.2	1876.1	1944.8	2026.1	2062.5	2173.9	2292.8	2321.7	2356.3	2402.1	2419.8
		% growth re. preceding quarter			2.7	3.7	4.2	1.8	5.4	5.5	1.3	1.5	1.9	0.7
		% growth re. one year ago						n.a.	n.a.	n.a.	n.a.	14.2	10.5	5.5
	Actual Wafer-Starts	Wafer-starts per week x1000		1640.6	1715.3	1729.1	1758.4	1799.1	1935.8	2052.7	2087.4	2113.5	2133.6	2103.4
		% growth re. preceding quarter			4.6	0.8	1.7	2.3	7.6	6.0	1.7	1.2	1.0	-1.4
		% growth re. one year ago						n.a.	n.a.	n.a.	n.a.	17.5	10.2	2.5
Utilisation	in percent (%)		89.8	91.4	88.9	86.8	87.2	89.0	89.5	89.9	89.7	88.8	86.9	

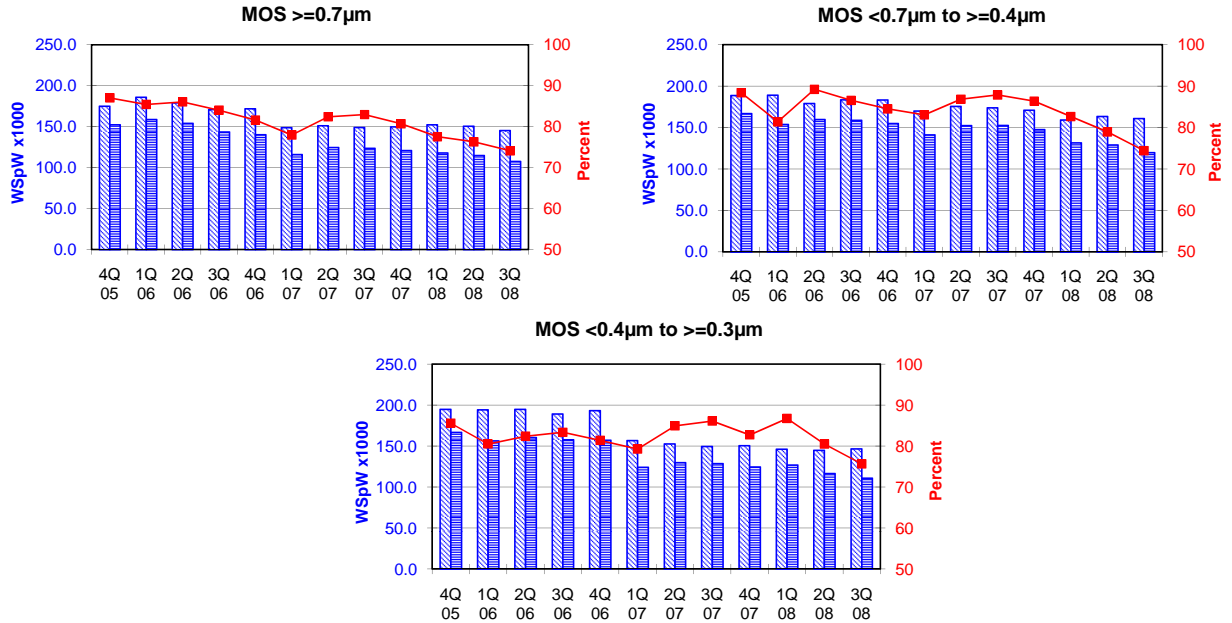
Green bordered cells contain changes resulting from revised inputs

These statistics are based on data supplied by merchant SC manufacturers who together represent the great majority of the world's SC production.

All MOS data are expressed in 8 inch equivalent wafers.

WSpW = Wafer-Starts per Week.

Legends : Capacity WSpW Actual WSpW Utilisation of capacity in percent



		4Q 05	1Q 06	2Q 06	3Q 06	4Q 06	1Q 07	2Q 07	3Q 07	4Q 07	1Q 08	2Q 08	3Q 08	
MOS $\geq 0.7\mu\text{m}$	Capacity	Wafer-starts per week x1000	174.9	185.9	179.0	170.9	171.8	148.8	151.2	148.9	149.8	152.2	145.2	
		% growth re. preceding quarter	-0.3	6.3	-3.7	-4.5	0.5	-13.4	1.6	-1.5	0.6	1.6	-1.1	-3.5
		% growth re. one year ago	-2.1	6.5	9.9	-2.6	-1.8	-20.0	-15.5	-12.9	-12.8	2.3	-0.5	-2.5
	Actual Wafer-Starts	Wafer-starts per week x1000	152.2	158.8	154.0	143.6	140.2	116.0	124.6	123.5	120.9	118.0	114.8	107.6
		% growth re. preceding quarter	3.0	4.3	-3.0	-6.8	-2.4	-17.3	7.4	-0.9	-2.1	-2.4	-2.7	-6.3
		% growth re. one year ago	10.5	19.0	14.2	-2.8	-7.9	-27.0	-19.1	-14.0	-13.8	1.7	-7.9	-12.9
	Utilisation	in percent (%)	87.0	85.4	86.0	84.0	81.6	78.0	82.4	82.9	80.7	77.5	76.3	74.1

		4Q 05	1Q 06	2Q 06	3Q 06	4Q 06	1Q 07	2Q 07	3Q 07	4Q 07	1Q 08	2Q 08	3Q 08	
MOS $< 0.7\mu\text{m}$ to $\geq 0.4\mu\text{m}$	Capacity	Wafer-starts per week x1000	188.7	189.0	179.0	183.5	183.3	170.0	175.5	173.8	170.9	159.1	163.4	161.0
		% growth re. preceding quarter	0.3	0.2	-5.3	2.5	-0.1	-7.3	3.2	-1.0	-1.7	-6.9	2.7	-1.5
		% growth re. one year ago	10.0	-3.5	-4.4	-2.5	-2.9	-10.1	-2.0	-5.3	-6.8	-6.4	-6.9	-7.4
	Actual Wafer-Starts	Wafer-starts per week x1000	166.8	153.8	159.7	158.8	154.9	141.2	152.4	152.7	147.6	131.5	129.0	119.8
		% growth re. preceding quarter	0.5	-7.8	3.8	-0.6	-2.5	-8.8	7.9	0.2	-3.3	-10.9	-1.9	-7.1
		% growth re. one year ago	12.5	-4.6	-5.3	-4.3	-7.1	-8.2	-4.6	-3.8	-4.7	-6.9	-15.4	-21.5
	Utilisation	in percent (%)	88.4	81.4	89.2	86.5	84.5	83.1	86.8	87.9	86.4	82.7	78.9	74.4

		4Q 05	1Q 06	2Q 06	3Q 06	4Q 06	1Q 07	2Q 07	3Q 07	4Q 07	1Q 08	2Q 08	3Q 08	
MOS $< 0.4\mu\text{m}$ to $\geq 0.3\mu\text{m}$	Capacity	Wafer-starts per week x1000	194.7	194.3	194.8	189.2	193.2	156.7	152.7	149.5	150.5	146.2	144.9	146.5
		% growth re. preceding quarter	-0.1	-0.2	0.3	-2.9	2.1	-18.9	-2.6	-2.1	0.7	-2.9	-0.9	1.1
		% growth re. one year ago	-0.8	3.6	5.1	-2.9	-0.8	-19.4	-21.6	-21.0	-22.1	-6.7	-5.1	-2.0
	Actual Wafer-Starts	Wafer-starts per week x1000	166.6	156.4	160.5	157.7	157.2	124.2	129.7	128.7	124.5	126.8	116.6	110.8
		% growth re. preceding quarter	0.6	-6.1	2.6	-1.7	-0.3	-21.0	4.4	-0.8	-3.3	1.8	-8.0	-5.0
		% growth re. one year ago	1.8	2.7	2.2	-4.8	-5.6	-20.6	-19.2	-18.4	-20.8	2.1	-10.1	-13.9
	Utilisation	in percent (%)	85.6	80.5	82.4	83.4	81.4	79.3	84.9	86.1	82.7	86.7	80.5	75.6

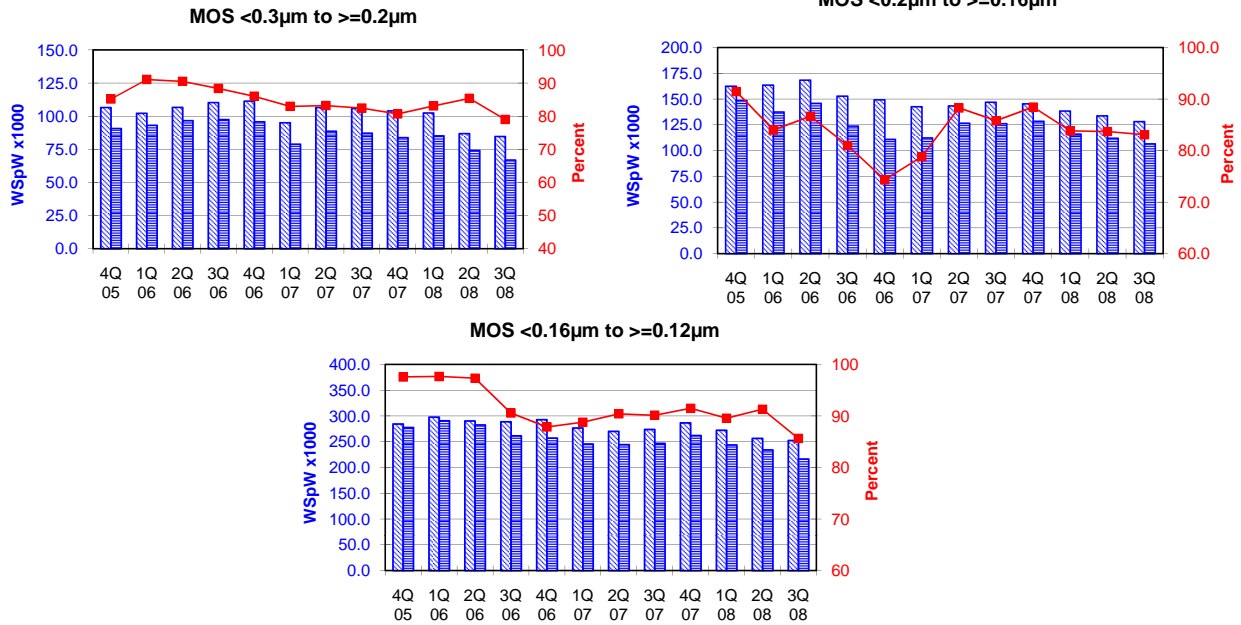
Yellow coloured cells reflect revised inputs Green bordered cells contain changes resulting from revised inputs

These statistics are based on data supplied by merchant SC manufacturers who together represent the great majority of the world's SC production.

All MOS data are expressed in 8 inch equivalent wafers.

WSpW = Wafer-Starts per Week.

Legends : Capacity WSpW Actual WSpW Utilisation of capacity in percent



		4Q 05	1Q 06	2Q 06	3Q 06	4Q 06	1Q 07	2Q 07	3Q 07	4Q 07	1Q 08	2Q 08	3Q 08	
MOS <0.3µm to >=0.2µm	Capacity	Wafer-starts per week x1000	106.6	102.3	106.8	110.4	111.5	95.2	106.7	105.9	104.1	102.6	87.0	84.8
		% growth re. preceding quarter	4.8	-4.0	4.4	3.4	1.0	-14.6	12.1	-0.7	-1.7	-1.4	-15.2	-2.5
		% growth re. one year ago	2.1	-3.4	1.6	8.6	4.6	-6.9	-0.1	-4.1	-6.6	7.8	-18.5	-19.9
	Actual Wafer-Starts	Wafer-starts per week x1000	90.8	93.2	96.7	97.6	95.9	79.0	88.8	87.3	84.0	85.3	74.3	67.0
		% growth re. preceding quarter	4.6	2.6	3.8	0.9	-1.7	-17.6	12.4	-1.7	-3.8	1.5	-12.9	-9.8
		% growth re. one year ago	8.7	20.4	16.5	12.4	5.6	-15.2	-8.2	-10.6	-12.4	8.0	-16.3	-23.3
Utilisation	in percent (%)	85.2	91.1	90.5	88.4	86.0	83.0	83.2	82.4	80.7	83.1	85.4	79.0	
MOS <0.2µm to >=0.16µm	Capacity	Wafer-starts per week x1000	162.5	163.6	168.4	152.9	149.2	142.5	143.4	147.0	145.3	138.4	133.7	128.2
		% growth re. preceding quarter	-1.6	0.7	2.9	-9.2	-2.4	-4.5	0.6	2.5	-1.2	-4.7	-3.4	-4.1
		% growth re. one year ago	-21.5	-1.2	-2.2	-7.4	-8.2	-12.9	-14.8	-3.9	-2.6	-2.9	-6.8	-12.8
	Actual Wafer-Starts	Wafer-starts per week x1000	148.6	137.4	145.9	123.8	110.9	112.3	126.6	126.1	128.5	116.0	111.9	106.5
		% growth re. preceding quarter	3.2	-7.5	6.2	-15.1	-10.4	1.3	12.7	-0.4	1.9	-9.7	-3.5	-4.8
		% growth re. one year ago	-14.9	1.9	-4.4	-14.0	-25.4	-18.3	-13.2	1.9	15.9	3.3	-11.6	-15.5
Utilisation	in percent (%)	91.4	84.0	86.6	81.0	74.3	78.8	88.3	85.8	88.4	83.8	83.7	83.1	
MOS <0.16µm to >=0.12µm	Capacity	Wafer-starts per week x 1000	284.6	297.8	290.4	288.8	292.9	276.7	270.4	274.0	286.7	272.4	256.6	252.7
		% growth re. preceding quarter	2.4	4.6	-2.5	-0.6	1.4	-5.5	-2.3	1.3	4.6	-5.0	-5.8	-1.5
		% growth re. one year ago		4.2	1.5	3.9	2.9	-7.1	-6.9	-5.1	-2.1	-1.6	-5.1	-7.8
	Actual Wafer-Starts	Wafer-starts per week x1000	277.7	290.9	282.7	261.6	257.4	245.7	244.5	247.0	262.3	244.0	234.3	216.4
		% growth re. preceding quarter	4.2	4.8	-2.8	-7.5	-1.6	-4.5	-0.5	1.0	6.2	-7.0	-4.0	-7.6
		% growth re. one year ago		9.7	5.4	-1.8	-7.3	-15.5	-13.5	-5.6	1.9	-0.7	-4.2	-12.4
Utilisation	in percent (%)	97.6	97.7	97.3	90.6	87.9	88.8	90.4	90.1	91.5	89.6	91.3	85.6	

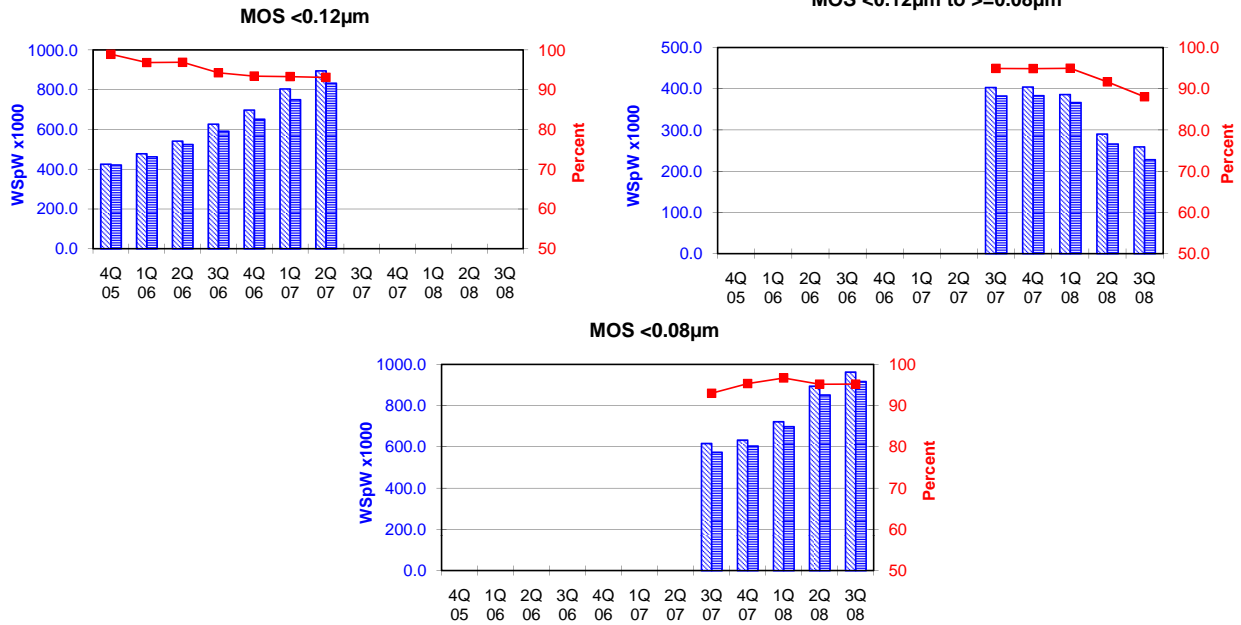
Yellow coloured cells reflect revised inputs Green bordered cells contain changes resulting from revised inputs

These statistics are based on data supplied by merchant SC manufacturers who together represent the great majority of the world's SC production.

All MOS data are expressed in 8 inch equivalent wafers.

WSpW = Wafer-Starts per Week.

Legends : Capacity WSpW Actual WSpW Utilisation of capacity in percent



		4Q 05	1Q 06	2Q 06	3Q 06	4Q 06	1Q 07	2Q 07	3Q 07	4Q 07	1Q 08	2Q 08	3Q 08	
MOS <0.12µm	Capacity	Wafer-starts per week x1000	426.2	478.1	542.0	627.6	697.9	804.5	895.5					
		% growth re. preceding quarter	12.2	12.2	13.4	15.8	11.2	15.3	11.3					
		% growth re. one year ago		65.2	64.8	65.3	63.7	68.3	65.2					
	Actual Wafer-Starts	Wafer-starts per week x1000	421.6	463.0	525.2	591.6	652.1	750.8	833.8					
		% growth re. preceding quarter	14.2	9.8	13.4	12.6	10.2	15.1	11.1					
		% growth re. one year ago		67.1	67.4	60.3	54.7	62.2	58.8					
Utilisation	in percent (%)	98.9	96.8	96.9	94.3	93.4	93.3	93.1						

		4Q 07	1Q 08	2Q 08	3Q 08	
MOS <0.12µm to >=0.08µm	Capacity	Wafer-starts per week x1000	403.1	404.1	385.8	290.1
		% growth re. preceding quarter	n.a.	0.2	-4.5	-24.8
		% growth re. one year ago	n.a.	n.a.	n.a.	n.a.
	Actual Wafer-Starts	Wafer-starts per week x1000	382.6	383.4	366.4	265.9
		% growth re. preceding quarter	n.a.	0.2	-4.4	-27.4
		% growth re. one year ago	n.a.	n.a.	n.a.	n.a.
Utilisation	in percent (%)	94.9	94.9	95.0	91.7	

		4Q 07	1Q 08	2Q 08	3Q 08	
MOS <0.08µm	Capacity	Wafer-starts per week x1000	616.9	633.4	722.1	894.6
		% growth re. preceding quarter	n.a.	2.7	14.0	23.9
		% growth re. one year ago	n.a.	n.a.	n.a.	n.a.
	Actual Wafer-Starts	Wafer-starts per week x1000	573.8	604.1	698.5	851.8
		% growth re. preceding quarter	n.a.	5.3	15.6	21.9
		% growth re. one year ago	n.a.	n.a.	n.a.	n.a.
Utilisation	in percent (%)	93.0	95.4	96.7	95.2	

**Yellow** coloured cells reflect revised inputs

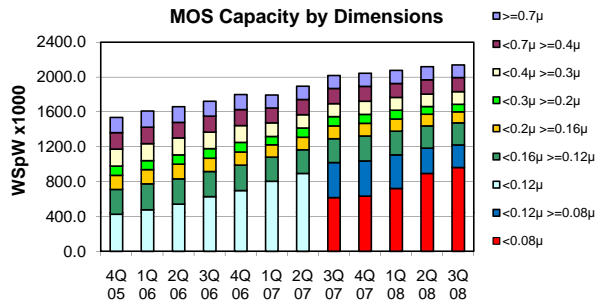
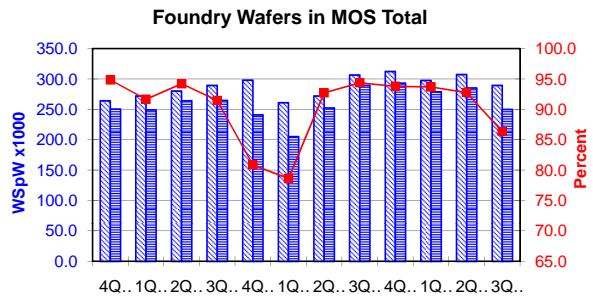
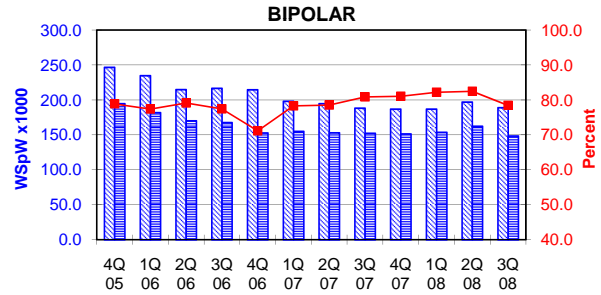
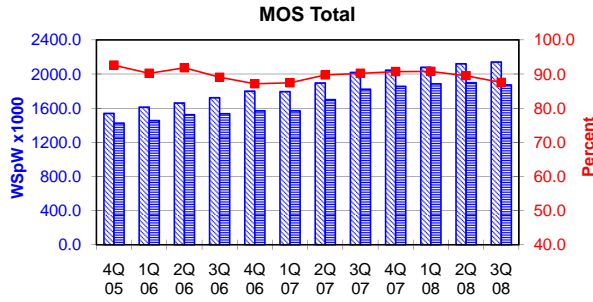
**Green** bordered cells contain changes resulting from revised inputs

These statistics are based on data supplied by merchant SC manufacturers who together represent the great majority of the world's SC production.

All MOS data are expressed in 8 inch equivalent wafers. Bipolar data are expressed in 5 inch equivalent wafers.

WSPw = Wafer-Starts per Week.

Legends : Capacity WSPw Actual WSPw Utilisation of capacity in percent



			4Q 05	1Q 06	2Q 06	3Q 06	4Q 06	1Q 07	2Q 07	3Q 07	4Q 07	1Q 08	2Q 08	3Q 08
MOS Total	Capacity	Wafer-starts per week x 1000	1538.2	1611.0	1660.4	1723.3	1799.8	1794.4	1895.4	2019.1	2044.8	2078.8	2120.8	2140.3
		% growth re. preceding quarter	3.7	4.7	3.1	3.8	4.4	-0.3	5.6	6.5	1.3	1.7	2.0	0.9
		% growth re. one year ago	12.8	14.8	16.3	16.2	17.0	11.4	14.2	17.2	13.6	15.8	11.9	6.0
	Actual Wafer-Starts	Wafer-starts per week x1000	1424.3	1453.5	1524.7	1534.7	1568.6	1569.2	1700.4	1821.7	1855.3	1886.5	1898.6	1873.2
% growth re. preceding quarter		5.8	2.1	4.9	0.7	2.2	0.0	8.4	7.1	1.8	1.7	0.6	-1.3	
	% growth re. one year ago	20.8	21.0	19.3	14.0	10.1	8.0	11.5	18.7	18.3	20.2	11.7	2.8	
	Utilisation	in percent (%)	92.6	90.2	91.8	89.1	87.2	87.4	89.7	90.2	90.7	90.7	89.5	87.5
BIPOLAR (5 inch equivs.)	Capacity	Wafer-starts per week x1000	246.8	234.9	214.9	216.7	214.7	198.2	194.8	188.3	186.9	187.0	197.0	189.1
		% growth re. preceding quarter	-0.8	-4.8	-8.5	0.8	-0.9	-7.7	-1.7	-3.3	-0.7	0.1	5.3	-4.0
		% growth re. one year ago	-6.3	-12.0	-17.9	-12.9	-13.0	-15.6	-9.4	-13.1	-12.9	-5.7	1.1	0.4
	Actual Wafer-Starts	Wafer-starts per week x1000	194.7	181.8	170.1	167.8	152.8	155.2	153.0	152.3	151.5	153.7	162.5	148.4
% growth re. preceding quarter		-2.8	-6.6	-6.4	-1.4	-8.9	1.6	-1.4	-0.5	-0.5	1.5	5.7	-8.7	
	% growth re. one year ago	-7.1	-8.8	-21.2	-16.2	-21.5	-14.6	-10.1	-9.2	-0.9	-1.0	6.2	-2.6	
	Utilisation	in percent (%)	78.9	77.4	79.2	77.4	71.2	78.3	78.5	80.9	81.1	82.2	82.5	78.5
Foundry Wafers in MOS Total	Capacity	Wafer-starts per week x1000	264.2	272.0	280.3	289.4	298.1	261.1	272.2	306.6	312.5	297.7	307.5	289.5
		% growth re. preceding quarter	2.9	3.0	3.1	3.2	3.0	-12.4	4.3	12.6	1.9	-4.7	3.3	-5.9
		% growth re. one year ago	26.4	16.9	11.1	12.7	12.8	-4.0	-2.9	5.9	4.8	14.0	13.0	-5.6
	Actual Wafer-Starts	Wafer-starts per week x1000	250.6	249.3	264.1	264.7	241.1	205.3	252.4	289.4	293.1	278.9	285.3	250.0
% growth re. preceding quarter		6.4	-0.5	5.9	0.2	-8.9	-14.8	22.9	14.7	1.3	-4.8	2.3	-12.4	
	% growth re. one year ago	47.0	42.5	26.0	12.4	-3.8	-17.6	-4.4	9.3	21.6	35.8	13.0	-13.6	
	Utilisation	in percent (%)	94.9	91.7	94.2	91.5	80.9	78.6	92.7	94.4	93.8	93.7	92.8	86.4

Yellow coloured cells reflect revised inputs

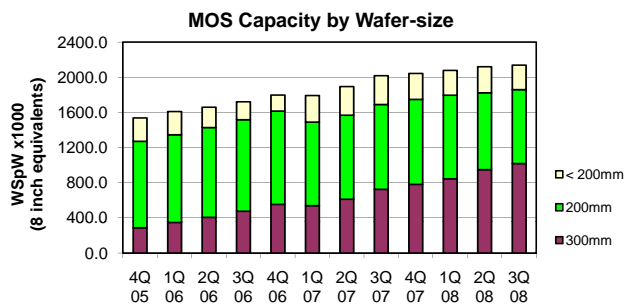
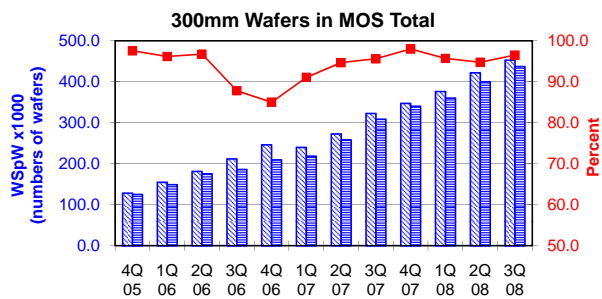
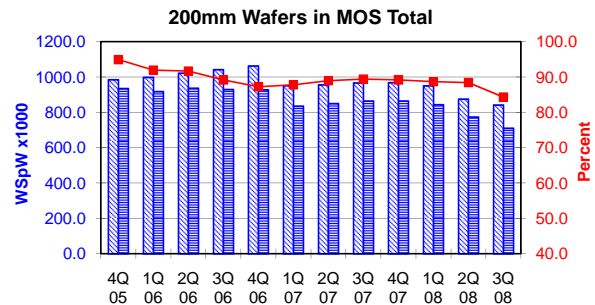
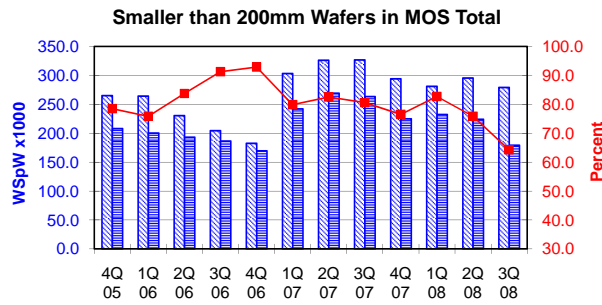
Green bordered cells contain changes resulting from revised inputs

These statistics are based on data supplied by merchant SC manufacturers who together represent the great majority of the world's SC production.

All MOS data are expressed in 8 inch equivalent wafers, except for the 300mm wafer data where annotated as "numbers of wafers".

WSpW = Wafer-Starts per Week.

Legends : Capacity WSpW Actual WSpW Utilisation of capacity in percent



			4Q 05	1Q 06	2Q 06	3Q 06	4Q 06	1Q 07	2Q 07	3Q 07	4Q 07	1Q 08	2Q 08	3Q 08
< 200mm Wafers in MOS Total	Capacity	Wafer-starts per week x 1000	265.0	264.4	230.7	204.5	182.7	303.3	326.2	326.8	294.2	281.2	295.7	279.2
		% growth re. preceding quarter	9.3	-0.2	-12.8	-11.3	-10.7	66.0	7.6	0.2	-10.0	-4.4	5.1	-5.6
		% growth re. one year ago	-13.0	-8.0	-13.7	-15.7	-31.1	14.7	41.4	59.8	61.0	-7.3	-9.4	-14.6
	Actual Wafer-Starts	Wafer-starts per week x1000	208.0	200.5	193.1	186.7	169.7	242.3	269.2	263.4	225.1	232.5	224.3	179.4
		% growth re. preceding quarter	7.3	-3.6	-3.7	-3.4	-9.1	42.7	11.1	-2.2	-14.5	3.3	-3.5	-20.0
		% growth re. one year ago	-22.9	-3.0	-12.3	-3.7	-18.4	20.9	39.4	41.1	32.6	-4.0	-16.7	-31.9
	Utilisation	in percent (%)	78.5	75.8	83.7	91.3	92.9	79.9	82.5	80.6	76.5	82.7	75.9	64.3

			4Q 05	1Q 06	2Q 06	3Q 06	4Q 06	1Q 07	2Q 07	3Q 07	4Q 07	1Q 08	2Q 08	3Q 08
200mm wafers in MOS Total	Capacity	Wafer-starts per week x1000	984.5	998.1	1021.6	1041.8	1062.7	951.1	955.4	966.2	968.7	950.5	875.2	841.9
		% growth re. preceding quarter	0.4	1.4	2.4	2.0	2.0	-10.5	0.5	1.1	0.3	-1.9	-7.9	-3.8
		% growth re. one year ago	10.0	9.3	9.3	6.2	7.9	-4.7	-6.5	-7.3	-8.8	-0.1	-8.4	-12.9
	Actual Wafer-Starts	Wafer-starts per week x1000	934.6	917.8	936.7	929.1	927.5	835.1	850.0	864.0	863.9	843.1	774.1	709.9
		% growth re. preceding quarter	2.6	-1.8	2.1	-0.8	-0.2	-10.0	1.8	1.6	0.0	-2.4	-8.2	-8.3
		% growth re. one year ago	22.0	13.9	9.8	2.0	-0.8	-9.0	-9.3	-7.0	-6.9	1.0	-8.9	-17.8
	Utilisation	in percent (%)	94.9	92.0	91.7	89.2	87.3	87.8	89.0	89.4	89.2	88.7	88.4	84.3

			4Q 05	1Q 06	2Q 06	3Q 06	4Q 06	1Q 07	2Q 07	3Q 07	4Q 07	1Q 08	2Q 08	3Q 08
300mm wafers in MOS Total	Capacity	WSpW x 1000 expressed in 8 inch equivalent wafers	288.7	348.5	408.2	477.0	554.4	540.0	613.8	726.1	781.9	847.1	950.0	1019.3
		WSpW x 1000 expressed in numbers of wafers	128.3	154.9	181.4	212.0	246.4	240.0	272.8	322.7	347.5	376.5	422.2	453.0
		% growth re. preceding quarter	11.3	20.7	17.1	16.9	16.2	-2.6	13.7	18.3	7.7	8.3	12.1	7.3
		% growth re. one year ago	76.5	71.2	81.0	83.9	92.0	54.9	50.4	52.2	41.0	56.9	54.8	40.4
	Actual Wafer-Starts	WSpW x 1000 expressed in 8 inch equivalent wafers	281.7	335.3	394.9	419.0	471.4	491.9	581.2	694.4	766.4	810.9	900.2	983.9
		WSpW x 1000 expressed in numbers of wafers	125.2	149.0	175.5	186.2	209.5	218.6	258.3	308.6	340.6	360.4	400.1	437.3
		% growth re. preceding quarter	17.1	19.0	17.8	6.1	12.5	4.3	18.2	19.5	10.4	5.8	11.0	9.3
		% growth re. one year ago	97.2	77.4	93.1	74.2	67.3	46.7	47.2	65.7	62.6	64.9	54.9	41.7
	Utilisation	in percent (%)	97.6	96.2	96.7	87.8	85.0	91.1	94.7	95.6	98.0	95.7	94.8	96.5

Yellow coloured cells reflect revised inputs Green bordered cells contain changes resulting from revised inputs

These statistics are based on data supplied by merchant SC manufacturers who together represent the great majority of the world's SC production.