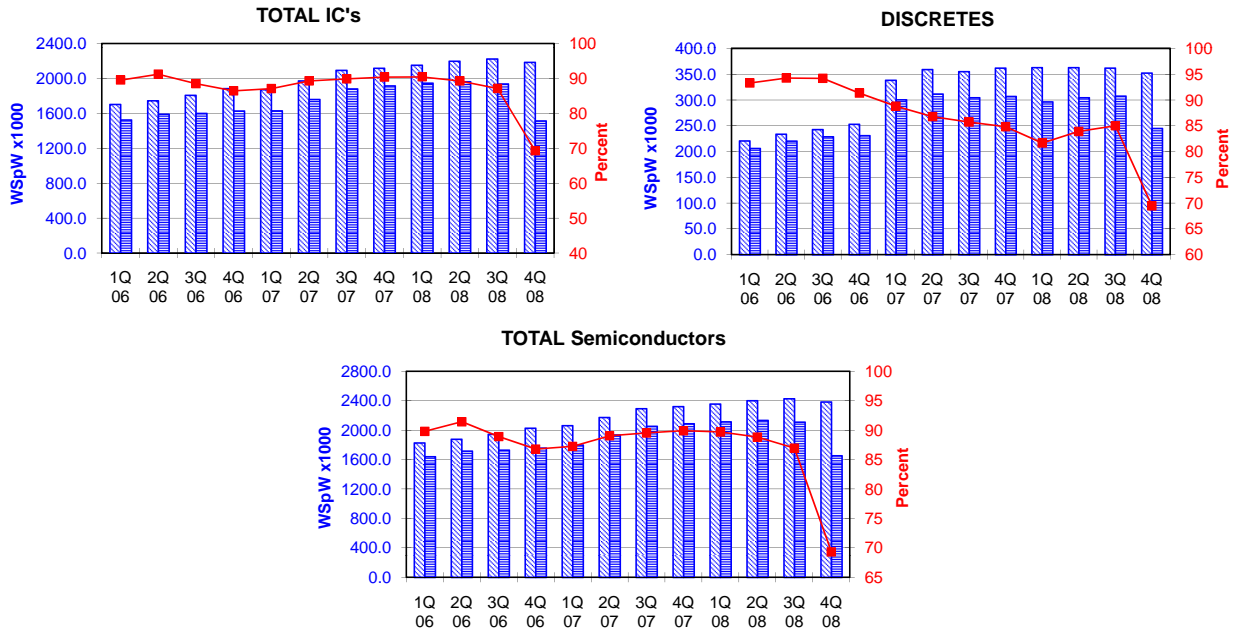


TOTAL IC's and TOTAL Semiconductors data are expressed in 8 inch equivalent wafers. DISCRETES data are expressed in 6 inch equivalent wafers. "TOTAL IC's" include Bipolar data, which were converted for this purpose from 5 inch to 8 inch equivalent wafers by the factor 0.391. "TOTAL Semiconductors" include DISCRETES data, which were converted for this purpose from 6 inch to 8 inch equivalent wafers by the factor 0.563.

WSpW = Wafer-Starts per Week.

Legends : Capacity WSpW Actual WSpW Utilisation of capacity in percent



		1Q 06	2Q 06	3Q 06	4Q 06	1Q 07	2Q 07	3Q 07	4Q 07	1Q 08	2Q 08	3Q 08	4Q 08	
TOTAL IC's	Capacity	Wafer-starts per week x 1000	1702.8	1744.4	1808.0	1883.7	1871.9	1971.6	2092.7	2117.9	2151.9	2197.8	2223.1	2184.9
		% growth re. preceding quarter	4.2	2.4	3.6	4.2	-0.6	5.3	6.1	1.2	1.6	2.1	1.2	-1.7
		% growth re. one year ago	12.9	14.0	14.4	15.2	9.9	13.0	15.7	12.4	15.0	11.5	6.2	3.2
	Actual Wafer-Starts	Wafer-starts per week x 1000	1524.6	1591.2	1600.3	1628.3	1629.9	1760.2	1881.2	1914.5	1946.6	1962.1	1937.0	1514.2
		% growth re. preceding quarter	1.6	4.4	0.6	1.8	0.1	8.0	6.9	1.8	1.7	0.8	-1.3	-21.8
		% growth re. one year ago	19.1	16.8	12.4	8.5	6.9	10.6	17.6	17.6	19.4	11.5	3.0	-20.9
	Utilisation	in percent (%)	89.5	91.2	88.5	86.4	87.1	89.3	89.9	90.4	90.5	89.3	87.1	69.3

Discrete Semiconductor participation expanded from 1Q-2007

		1Q 06	2Q 06	3Q 06	4Q 06	1Q 07	2Q 07	3Q 07	4Q 07	1Q 08	2Q 08	3Q 08	4Q 08	
DISCRETES (6 inch equivs.)	Capacity	Wafer-starts per week x1000	220.8	233.8	242.9	252.9	338.5	359.3	355.3	362.0	363.0	362.9	362.1	352.4
		% growth re. preceding quarter		5.9	3.9	4.1	n.a.	6.1	-1.1	1.9	0.3	0.0	-0.2	-2.7
		% growth re. one year ago					n.a.	n.a.	n.a.	n.a.	7.2	1.0	1.9	-2.7
	Actual Wafer-Starts	Wafer-starts per week x1000	206.0	220.4	228.8	231.0	300.6	311.8	304.6	307.1	296.4	304.5	307.8	244.8
		% growth re. preceding quarter		7.0	3.8	1.0	n.a.	3.7	-2.3	0.8	-3.5	2.7	1.1	-20.5
		% growth re. one year ago					n.a.	n.a.	n.a.	n.a.	-1.4	-2.3	1.1	-20.3
Utilisation	in percent (%)	93.3	94.3	94.2	91.3	88.8	86.8	85.7	84.8	81.7	83.9	85.0	69.5	

		1Q 06	2Q 06	3Q 06	4Q 06	1Q 07	2Q 07	3Q 07	4Q 07	1Q 08	2Q 08	3Q 08	4Q 08	
TOTAL Semiconductors	Capacity	Wafer-starts per week x1000	1827.2	1876.1	1944.8	2026.1	2062.5	2173.9	2292.8	2321.7	2356.3	2402.1	2427.0	2383.3
		% growth re. preceding quarter		2.7	3.7	4.2	1.8	5.4	5.5	1.3	1.5	1.9	1.0	-1.8
		% growth re. one year ago					n.a.	n.a.	n.a.	n.a.	14.2	10.5	5.9	2.7
	Actual Wafer-Starts	Wafer-starts per week x1000	1640.6	1715.3	1729.1	1758.4	1799.1	1935.8	2052.7	2087.4	2113.5	2133.6	2110.3	1652.0
		% growth re. preceding quarter		4.6	0.8	1.7	2.3	7.6	6.0	1.7	1.2	1.0	-1.1	-21.7
		% growth re. one year ago					n.a.	n.a.	n.a.	n.a.	17.5	10.2	2.8	-20.9
	Utilisation	in percent (%)	89.8	91.4	88.9	86.8	87.2	89.0	89.5	89.9	89.7	88.8	87.0	69.3

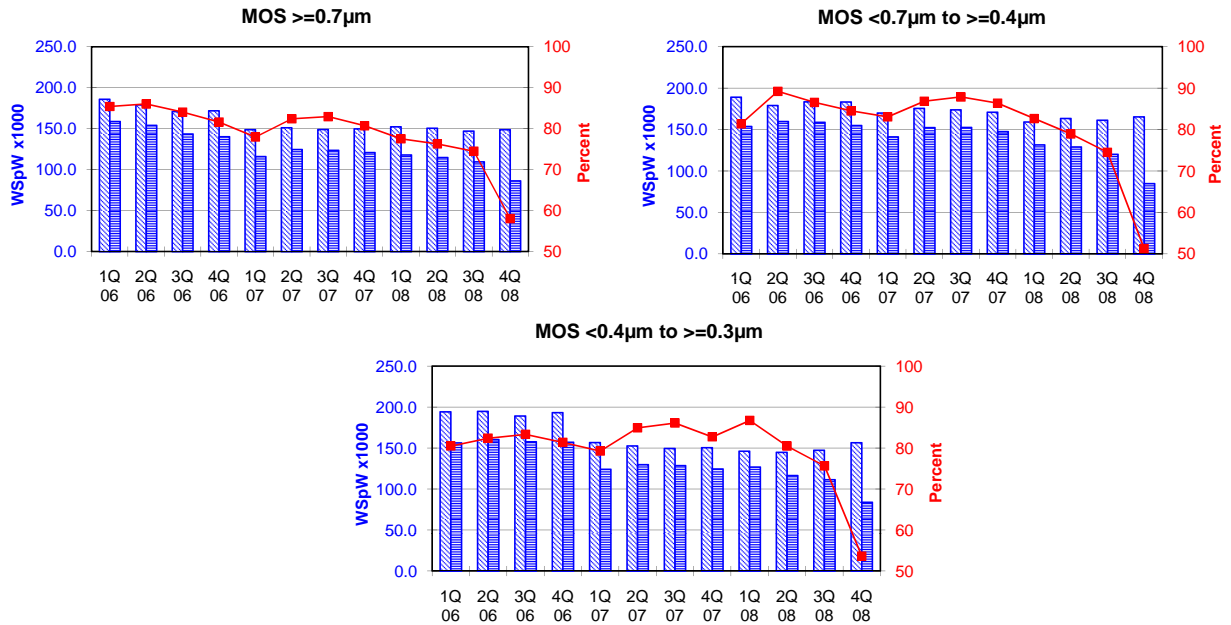
Yellow coloured cells reflect revised inputs Green bordered cells contain changes resulting from revised inputs

These statistics are based on data supplied by merchant SC manufacturers who together represent the great majority of the world's SC production.

All MOS data are expressed in 8 inch equivalent wafers.

WSpW = Wafer-Starts per Week.

Legends : Capacity WSpW Actual WSpW Utilisation of capacity in percent



		1Q 06	2Q 06	3Q 06	4Q 06	1Q 07	2Q 07	3Q 07	4Q 07	1Q 08	2Q 08	3Q 08	4Q 08	
MOS $\geq 0.7\mu\text{m}$	Capacity	Wafer-starts per week x1000	185.9	179.0	170.9	171.8	148.8	151.2	148.9	149.8	152.2	150.5	147.0	148.7
		% growth re. preceding quarter	6.3	-3.7	-4.5	0.5	-13.4	1.6	-1.5	0.6	1.6	-1.1	-2.3	1.2
		% growth re. one year ago	6.5	9.9	-2.6	-1.8	-20.0	-15.5	-12.9	-12.8	2.3	-0.5	-1.3	-0.7
	Actual Wafer-Starts	Wafer-starts per week x1000	158.8	154.0	143.6	140.2	116.0	124.6	123.5	120.9	118.0	114.8	109.5	86.3
		% growth re. preceding quarter	4.3	-3.0	-6.8	-2.4	-17.3	7.4	-0.9	-2.1	-2.4	-2.7	-4.6	-21.2
		% growth re. one year ago	19.0	14.2	-2.8	-7.9	-27.0	-19.1	-14.0	-13.8	1.7	-7.9	-11.3	-28.6
	Utilisation	in percent (%)	85.4	86.0	84.0	81.6	78.0	82.4	82.9	80.7	77.5	76.3	74.5	58.0

		1Q 06	2Q 06	3Q 06	4Q 06	1Q 07	2Q 07	3Q 07	4Q 07	1Q 08	2Q 08	3Q 08	4Q 08	
MOS $< 0.7\mu\text{m}$ to $\geq 0.4\mu\text{m}$	Capacity	Wafer-starts per week x1000	189.0	179.0	183.5	183.3	170.0	175.5	173.8	170.9	159.1	163.4	161.2	165.3
		% growth re. preceding quarter	0.2	-5.3	2.5	-0.1	-7.3	3.2	-1.0	-1.7	-6.9	2.7	-1.3	2.5
		% growth re. one year ago	-3.5	-4.4	-2.5	-2.9	-10.1	-2.0	-5.3	-6.8	-6.4	-6.9	-7.2	-3.3
	Actual Wafer-Starts	Wafer-starts per week x1000	153.8	159.7	158.8	154.9	141.2	152.4	152.7	147.6	131.5	129.0	120.1	84.8
		% growth re. preceding quarter	-7.8	3.8	-0.6	-2.5	-8.8	7.9	0.2	-3.3	-10.9	-1.9	-6.9	-29.4
		% growth re. one year ago	-4.6	-5.3	-4.3	-7.1	-8.2	-4.6	-3.8	-4.7	-6.9	-15.4	-21.3	-42.5
	Utilisation	in percent (%)	81.4	89.2	86.5	84.5	83.1	86.8	87.9	86.4	82.7	78.9	74.5	51.3

		1Q 06	2Q 06	3Q 06	4Q 06	1Q 07	2Q 07	3Q 07	4Q 07	1Q 08	2Q 08	3Q 08	4Q 08	
MOS $< 0.4\mu\text{m}$ to $\geq 0.3\mu\text{m}$	Capacity	Wafer-starts per week x1000	194.3	194.8	189.2	193.2	156.7	152.7	149.5	150.5	146.2	144.9	147.3	156.5
		% growth re. preceding quarter	-0.2	0.3	-2.9	2.1	-18.9	-2.6	-2.1	0.7	-2.9	-0.9	1.7	6.2
		% growth re. one year ago	3.6	5.1	-2.9	-0.8	-19.4	-21.6	-21.0	-22.1	-6.7	-5.1	-1.5	4.0
	Actual Wafer-Starts	Wafer-starts per week x1000	156.4	160.5	157.7	157.2	124.2	129.7	128.7	124.5	126.8	116.6	111.4	83.9
		% growth re. preceding quarter	-6.1	2.6	-1.7	-0.3	-21.0	4.4	-0.8	-3.3	1.8	-8.0	-4.5	-24.7
		% growth re. one year ago	2.7	2.2	-4.8	-5.6	-20.6	-19.2	-18.4	-20.8	2.1	-10.1	-13.4	-32.6
	Utilisation	in percent (%)	80.5	82.4	83.4	81.4	79.3	84.9	86.1	82.7	86.7	80.5	75.6	53.6

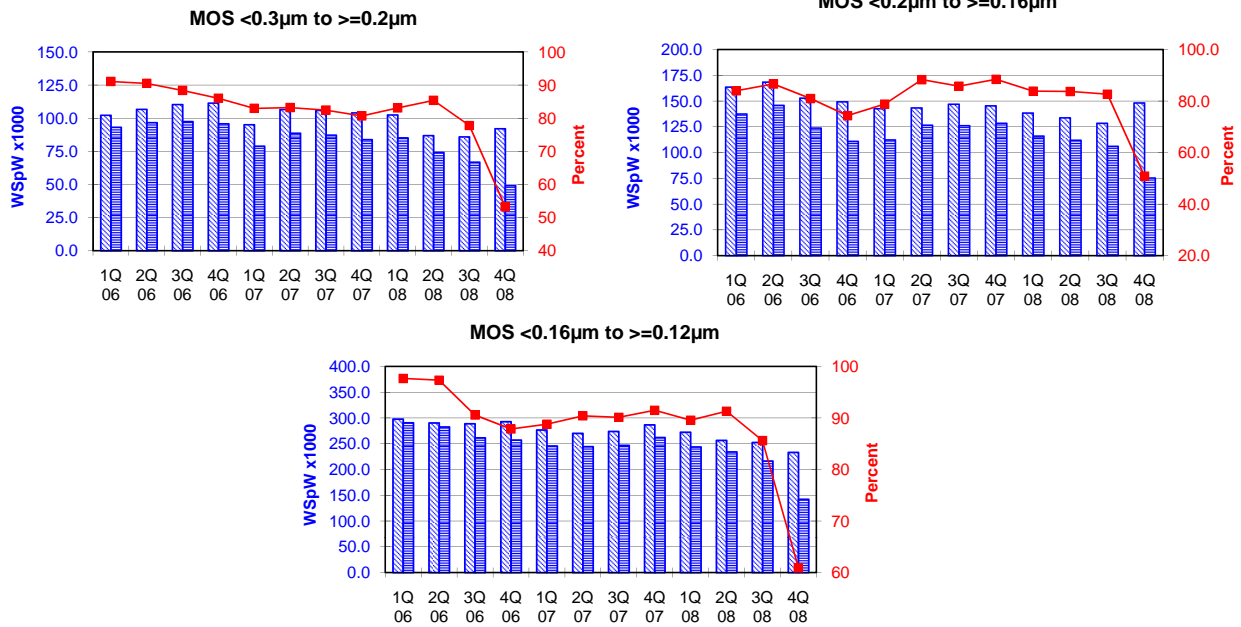
Yellow coloured cells reflect revised inputs Green bordered cells contain changes resulting from revised inputs

These statistics are based on data supplied by merchant SC manufacturers who together represent the great majority of the world's SC production.

All MOS data are expressed in 8 inch equivalent wafers.

WSpW = Wafer-Starts per Week.

Legends : Capacity WSpW Actual WSpW Utilisation of capacity in percent



		1Q 06	2Q 06	3Q 06	4Q 06	1Q 07	2Q 07	3Q 07	4Q 07	1Q 08	2Q 08	3Q 08	4Q 08	
MOS <0.3µm to >=0.2µm	Capacity	Wafer-starts per week x1000	102.3	106.8	110.4	111.5	95.2	106.7	105.9	104.1	102.6	87.0	86.0	92.2
		% growth re. preceding quarter	-4.0	4.4	3.4	1.0	-14.6	12.1	-0.7	-1.7	-1.4	-15.2	-1.1	7.2
		% growth re. one year ago	-3.4	1.6	8.6	4.6	-6.9	-0.1	-4.1	-6.6	7.8	-18.5	-18.8	-11.4
	Actual Wafer-Starts	Wafer-starts per week x1000	93.2	96.7	97.6	95.9	79.0	88.8	87.3	84.0	85.3	74.3	66.9	49.1
		% growth re. preceding quarter	2.6	3.8	0.9	-1.7	-17.6	12.4	-1.7	-3.8	1.5	-12.9	-10.0	-26.6
		% growth re. one year ago	20.4	16.5	12.4	5.6	-15.2	-8.2	-10.6	-12.4	8.0	-16.3	-23.4	-41.5
	Utilisation	in percent (%)	91.1	90.5	88.4	86.0	83.0	83.2	82.4	80.7	83.1	85.4	77.8	53.3

		1Q 06	2Q 06	3Q 06	4Q 06	1Q 07	2Q 07	3Q 07	4Q 07	1Q 08	2Q 08	3Q 08	4Q 08	
MOS <0.2µm to >=0.16µm	Capacity	Wafer-starts per week x1000	163.6	168.4	152.9	149.2	142.5	143.4	147.0	145.3	138.4	133.7	128.4	148.2
		% growth re. preceding quarter	0.7	2.9	-9.2	-2.4	-4.5	0.6	2.5	-1.2	-4.7	-3.4	-4.0	15.4
		% growth re. one year ago	-1.2	-2.2	-7.4	-8.2	-12.9	-14.8	-3.9	-2.6	-2.9	-6.8	-12.7	2.0
	Actual Wafer-Starts	Wafer-starts per week x1000	137.4	145.9	123.8	110.9	112.3	126.6	126.1	128.5	116.0	111.9	106.1	75.3
		% growth re. preceding quarter	-7.5	6.2	-15.1	-10.4	1.3	12.7	-0.4	1.9	-9.7	-3.5	-5.2	-29.0
		% growth re. one year ago	1.9	-4.4	-14.0	-25.4	-18.3	-13.2	1.9	15.9	3.3	-11.6	-15.9	-41.4
	Utilisation	in percent (%)	84.0	86.6	81.0	74.3	78.8	88.3	85.8	88.4	83.8	83.7	82.6	50.8

		1Q 06	2Q 06	3Q 06	4Q 06	1Q 07	2Q 07	3Q 07	4Q 07	1Q 08	2Q 08	3Q 08	4Q 08	
MOS <0.16µm to >=0.12µm	Capacity	Wafer-starts per week x 1000	297.8	290.4	288.8	292.9	276.7	270.4	274.0	286.7	272.4	256.6	252.7	233.4
		% growth re. preceding quarter	4.6	-2.5	-0.6	1.4	-5.5	-2.3	1.3	4.6	-5.0	-5.8	-1.5	-7.6
		% growth re. one year ago	4.2	1.5	3.9	2.9	-7.1	-6.9	-5.1	-2.1	-1.6	-5.1	-7.8	-18.6
	Actual Wafer-Starts	Wafer-starts per week x1000	290.9	282.7	261.6	257.4	245.7	244.5	247.0	262.3	244.0	234.3	216.4	142.2
		% growth re. preceding quarter	4.8	-2.8	-7.5	-1.6	-4.5	-0.5	1.0	6.2	-7.0	-4.0	-7.6	-34.3
		% growth re. one year ago	9.7	5.4	-1.8	-7.3	-15.5	-13.5	-5.6	1.9	-0.7	-4.2	-12.4	-45.8
	Utilisation	in percent (%)	97.7	97.3	90.6	87.9	88.8	90.4	90.1	91.5	89.6	91.3	85.6	60.9

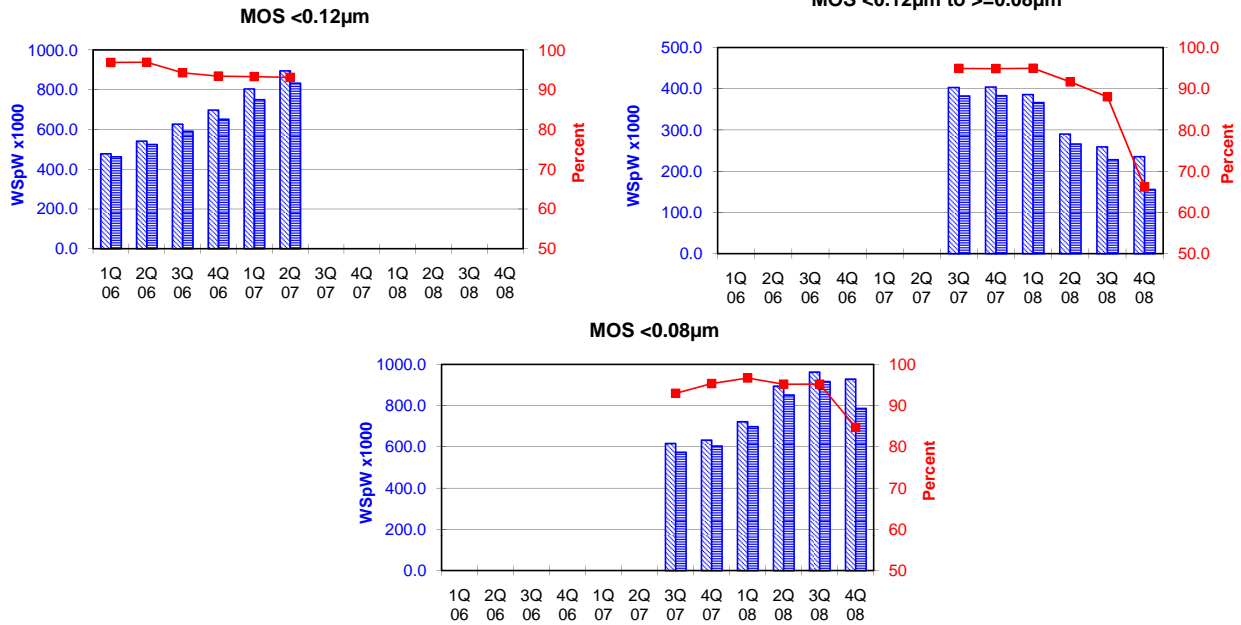
Yellow coloured cells reflect revised inouts Green bordered cells contain changes resulting from revised inputs

These statistics are based on data supplied by merchant SC manufacturers who together represent the great majority of the world's SC production.

All MOS data are expressed in 8 inch equivalent wafers.

WSpW = Wafer-Starts per Week.

Legends : Capacity WSpW Actual WSpW Utilisation of capacity in percent



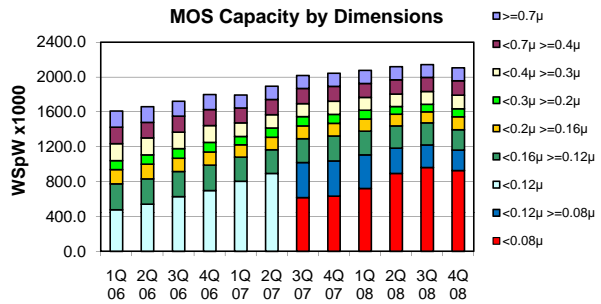
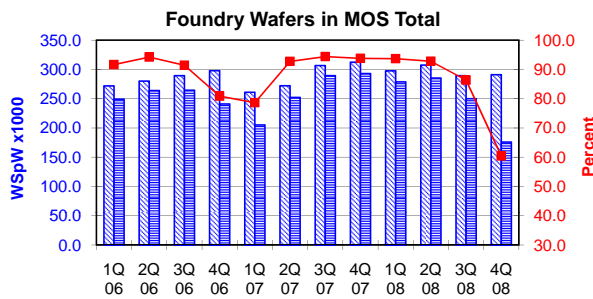
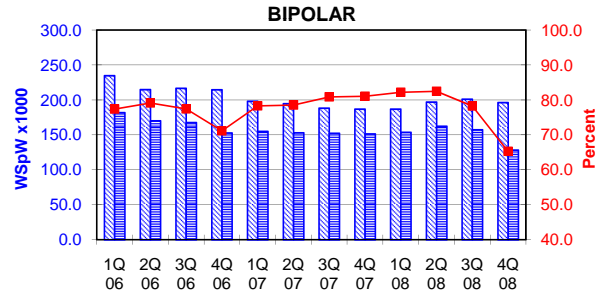
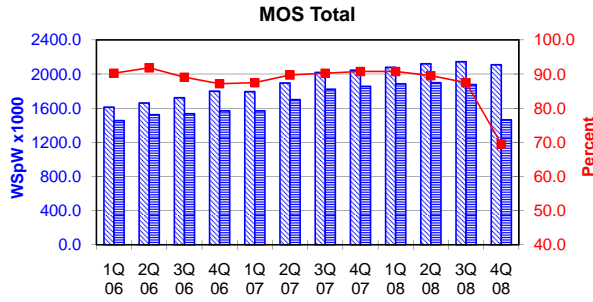
		1Q 06	2Q 06	3Q 06	4Q 06	1Q 07	2Q 07	3Q 07	4Q 07	1Q 08	2Q 08	3Q 08	4Q 08	
MOS <0.12µm	Capacity	Wafer-starts per week x1000	478.1	542.0	627.6	697.9	804.5	895.5						
		% growth re. preceding quarter	12.2	13.4	15.8	11.2	15.3	11.3						
		% growth re. one year ago	65.2	64.8	65.3	63.7	68.3	65.2						
	Actual Wafer-Starts	Wafer-starts per week x1000	463.0	525.2	591.6	652.1	750.8	833.8						
		% growth re. preceding quarter	9.8	13.4	12.6	10.2	15.1	11.1						
		% growth re. one year ago	67.1	67.4	60.3	54.7	62.2	58.8						
Utilisation	in percent (%)	96.8	96.9	94.3	93.4	93.3	93.1							
MOS <0.12µm to >=0.08µm	Capacity	Wafer-starts per week x1000						403.1	404.1	385.8	290.1	258.8	235.2	
		% growth re. preceding quarter						n.a.	0.2	-4.5	-24.8	-10.8	-9.1	
		% growth re. one year ago						n.a.	n.a.	n.a.	n.a.	-35.8	-41.8	
	Actual Wafer-Starts	Wafer-starts per week x1000						382.6	383.4	366.4	265.9	227.9	155.6	
		% growth re. preceding quarter						n.a.	0.2	-4.4	-27.4	-14.3	-31.7	
		% growth re. one year ago						n.a.	n.a.	n.a.	n.a.	-40.4	-59.4	
Utilisation	in percent (%)						94.9	94.9	95.0	91.7	88.1	66.2		
MOS <0.08µm	Capacity	Wafer-starts per week x1000							616.9	633.4	722.1	894.6	963.1	928.6
		% growth re. preceding quarter							n.a.	2.7	14.0	23.9	7.7	-3.6
		% growth re. one year ago							n.a.	n.a.	n.a.	n.a.	56.1	46.6
	Actual Wafer-Starts	Wafer-starts per week x1000							573.8	604.1	698.5	851.8	917.2	786.9
		% growth re. preceding quarter							n.a.	5.3	15.6	21.9	7.7	-14.2
		% growth re. one year ago							n.a.	n.a.	n.a.	n.a.	59.8	30.3
Utilisation	in percent (%)							93.0	95.4	96.7	95.2	95.2	84.7	

These statistics are based on data supplied by merchant SC manufacturers who together represent the great majority of the world's SC production.

All MOS data are expressed in 8 inch equivalent wafers. Bipolar data are expressed in 5 inch equivalent wafers.

WSpW = Wafer-Starts per Week.

Legends : Capacity WSpW Actual WSpW Utilisation of capacity in percent



			1Q 06	2Q 06	3Q 06	4Q 06	1Q 07	2Q 07	3Q 07	4Q 07	1Q 08	2Q 08	3Q 08	4Q 08
MOS Total	Capacity	Wafer-starts per week x 1000	1611.0	1660.4	1723.3	1799.8	1794.4	1895.4	2019.1	2044.8	2078.8	2120.8	2144.5	2108.1
		% growth re. preceding quarter	4.7	3.1	3.8	4.4	-0.3	5.6	6.5	1.3	1.7	2.0	1.1	-1.7
	Actual Wafer-Starts	Wafer-starts per week x1000	1453.5	1524.7	1534.7	1568.6	1569.2	1700.4	1821.7	1855.3	1886.5	1898.6	1875.5	1464.1
		% growth re. preceding quarter	2.1	4.9	0.7	2.2	0.0	8.4	7.1	1.8	0.6	-1.2	-21.9	
	Utilisation	in percent (%)	90.2	91.8	89.1	87.2	87.4	89.7	90.2	90.7	90.7	89.5	87.5	69.5

BIPOLAR (5 inch equivs.)	Capacity	Wafer-starts per week x1000	234.9	214.9	216.7	214.7	198.2	194.8	188.3	186.9	187.0	197.0	201.1	196.3
		% growth re. preceding quarter	-4.8	-8.5	0.8	-0.9	-7.7	-1.7	-3.3	-0.7	0.1	5.3	2.1	-2.4
	Actual Wafer-Starts	Wafer-starts per week x1000	181.8	170.1	167.8	152.8	155.2	153.0	152.3	151.5	153.7	162.5	157.4	128.2
		% growth re. preceding quarter	-6.6	-6.4	-1.4	-8.9	1.6	-1.4	-0.5	-0.5	1.5	5.7	-3.1	-18.6
	Utilisation	in percent (%)	77.4	79.2	77.4	71.2	78.3	78.5	80.9	81.1	82.2	82.5	78.3	65.3

Foundry Wafers in MOS Total	Capacity	Wafer-starts per week x1000	272.0	280.3	289.4	298.1	261.1	272.2	306.6	312.5	297.7	307.5	289.5	291.2
		% growth re. preceding quarter	3.0	3.1	3.2	3.0	-12.4	4.3	12.6	1.9	-4.7	3.3	-5.9	0.6
	Actual Wafer-Starts	Wafer-starts per week x1000	249.3	264.1	264.7	241.1	205.3	252.4	289.4	293.1	278.9	285.3	250.0	176.0
		% growth re. preceding quarter	-0.5	5.9	0.2	-8.9	-14.8	22.9	14.7	1.3	-4.8	2.3	-12.4	-29.6
	Utilisation	in percent (%)	91.7	94.2	91.5	80.9	78.6	92.7	94.4	93.8	93.7	92.8	86.4	60.4

Yellow coloured cells reflect revised inputs

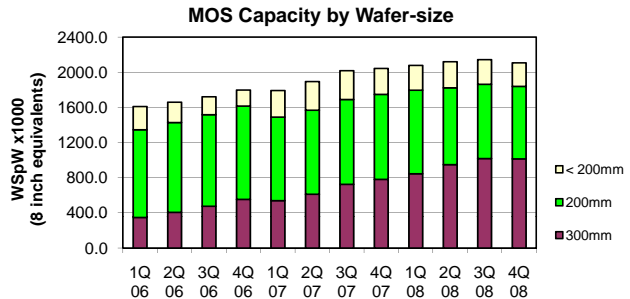
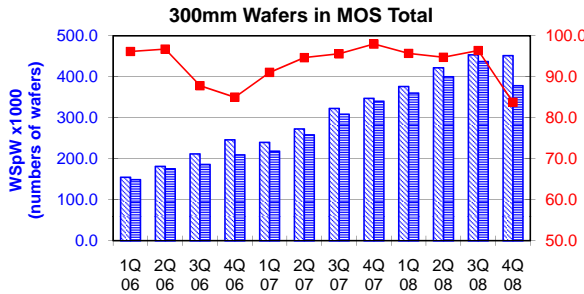
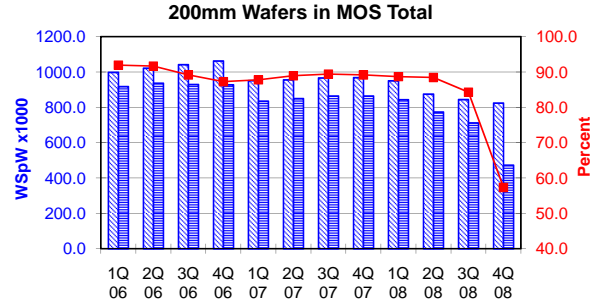
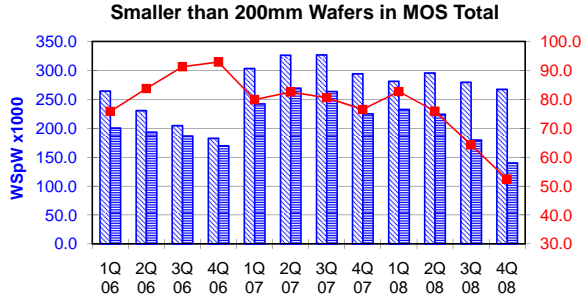
Green bordered cells contain changes resulting from revised inputs

These statistics are based on data supplied by merchant SC manufacturers who together represent the great majority of the world's SC production.

All MOS data are expressed in 8 inch equivalent wafers, except for the 300mm wafer data where annotated as "numbers of wafers".

WSpW = Wafer-Starts per Week.

Legends : Capacity WSpW Actual WSpW Utilisation of capacity in percent



		1Q 06	2Q 06	3Q 06	4Q 06	1Q 07	2Q 07	3Q 07	4Q 07	1Q 08	2Q 08	3Q 08	4Q 08	
< 200mm Wafers in MOS Total	Capacity	Wafer-starts per week x 1000	264.4	230.7	204.5	182.7	303.3	326.2	326.8	294.2	281.2	295.7	279.4	267.3
		% growth re. preceding quarter	-0.2	-12.8	-11.3	-10.7	66.0	7.6	0.2	-10.0	-4.4	5.1	-5.5	-4.3
		% growth re. one year ago	-8.0	-13.7	-15.7	-31.1	14.7	41.4	59.8	61.0	-7.3	-9.4	-14.5	-9.2
	Actual Wafer-Starts	Wafer-starts per week x1000	200.5	193.1	186.7	169.7	242.3	269.2	263.4	225.1	232.5	224.3	179.7	140.0
	% growth re. preceding quarter	-3.6	-3.7	-3.4	-9.1	42.7	11.1	-2.2	-14.5	3.3	-3.5	-19.9	-22.1	
	% growth re. one year ago	-3.0	-12.3	-3.7	-18.4	20.9	39.4	41.1	32.6	-4.0	-16.7	-31.8	-37.8	
	Utilisation	in percent (%)	75.8	83.7	91.3	92.9	79.9	82.5	80.6	76.5	82.7	75.9	64.3	52.4

200mm wafers in MOS Total	Capacity	Wafer-starts per week x1000	998.1	1021.6	1041.8	1062.7	951.1	955.4	966.2	968.7	950.5	875.2	844.7	824.5
		% growth re. preceding quarter	1.4	2.4	2.0	2.0	-10.5	0.5	1.1	0.3	-1.9	-7.9	-3.5	-2.4
		% growth re. one year ago	9.3	9.3	6.2	7.9	-4.7	-6.5	-7.3	-8.8	-0.1	-8.4	-12.6	-14.9
	Actual Wafer-Starts	Wafer-starts per week x1000	917.8	936.7	929.1	927.5	835.1	850.0	864.0	863.9	843.1	774.1	711.9	472.7
	% growth re. preceding quarter	-1.8	2.1	-0.8	-0.2	-10.0	1.8	1.6	0.0	-2.4	-8.2	-8.0	-33.6	
	% growth re. one year ago	13.9	9.8	2.0	-0.8	-9.0	-9.3	-7.0	-6.9	1.0	-8.9	-17.6	-45.3	
	Utilisation	in percent (%)	92.0	91.7	89.2	87.3	87.8	89.0	89.4	89.2	88.7	88.4	84.3	57.3

300mm wafers in MOS Total	Capacity	WSpW x 1000 expressed in 8 inch equivalent wafers	348.5	408.2	477.0	554.4	540.0	613.8	726.1	781.9	847.1	950.0	1020.4	1016.3
		WSpW x 1000 expressed in numbers of wafers	154.9	181.4	212.0	246.4	240.0	272.8	322.7	347.5	376.5	422.2	453.5	451.7
		% growth re. preceding quarter	20.7	17.1	16.9	16.2	-2.6	13.7	18.3	7.7	8.3	12.1	7.4	-0.4
		% growth re. one year ago	71.2	81.0	83.9	92.0	54.9	50.4	52.2	41.0	56.9	54.8	40.5	30.0
Actual Wafer-Starts	WSpW x 1000 expressed in 8 inch equivalent wafers	335.3	394.9	419.0	471.4	491.9	581.2	694.4	766.4	810.9	900.2	983.9	851.4	
	WSpW x 1000 expressed in numbers of wafers	149.0	175.5	186.2	209.5	218.6	258.3	308.6	340.6	360.4	400.1	437.3	378.4	
	% growth re. preceding quarter	19.0	17.8	6.1	12.5	4.3	18.2	19.5	10.4	5.8	11.0	9.3	-13.5	
	% growth re. one year ago	77.4	93.1	74.2	67.3	46.7	47.2	65.7	62.6	64.9	54.9	41.7	11.1	
	Utilisation	in percent (%)	96.2	96.7	87.8	85.0	91.1	94.7	95.6	98.0	95.7	94.8	96.4	83.8

Yellow coloured cells reflect revised inputs Green bordered cells contain changes resulting from revised inputs

These statistics are based on data supplied by merchant SC manufacturers who together represent the great majority of the world's SC production.