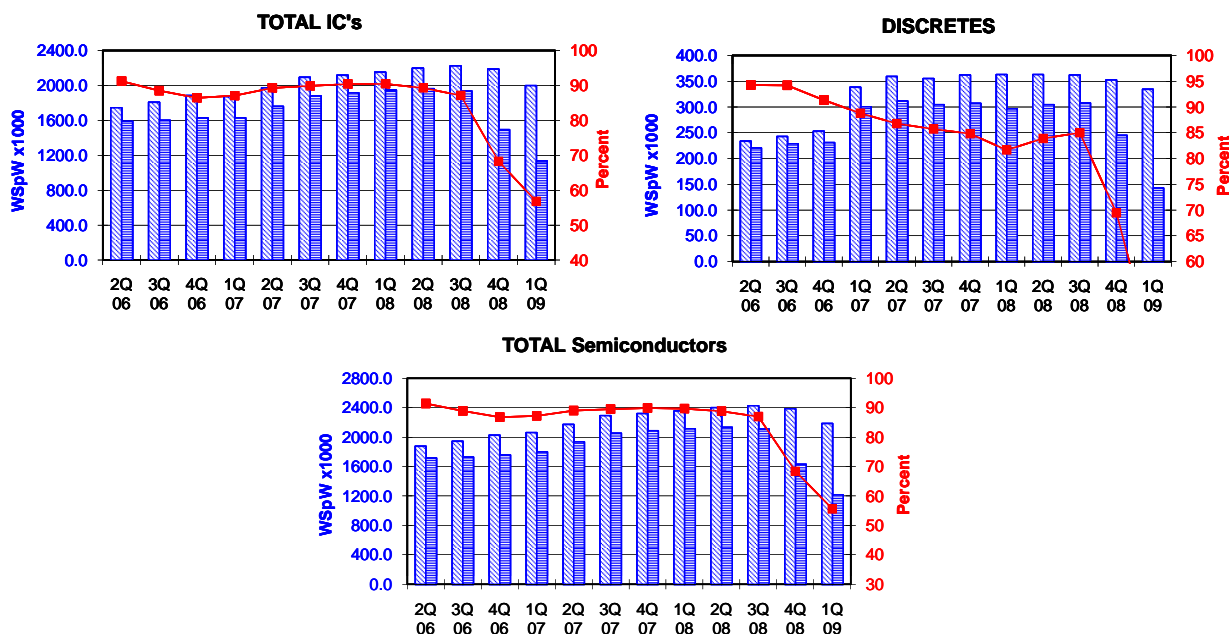


TOTAL IC's and TOTAL Semiconductors data are expressed in 8 inch equivalent wafers. DISCRETES data are expressed in 6 inch equivalent wafers. "TOTAL IC's" include Bipolar data, which were converted for this purpose from 5 inch to 8 inch equivalent wafers by the factor 0.391. "TOTAL Semiconductors" include DISCRETES data, which were converted for this purpose from 6 inch to 8 inch equivalent wafers by the factor 0.563.

WSpW = Wafer-Starts per Week.

Legends : Capacity WSpW Actual WSpW Utilisation of capacity in percent



		2Q 06	3Q 06	4Q 06	1Q 07	2Q 07	3Q 07	4Q 07	1Q 08	2Q 08	3Q 08	4Q 08	1Q 09	
TOTAL IC's	Capacity	Wafer-starts per week x 1000	1744.4	1808.0	1883.7	1871.9	1971.6	2092.7	2117.9	2151.9	2197.8	2223.1	2187.2	1997.4
		% growth re. preceding quarter	2.4	3.6	4.2	-0.6	5.3	6.1	1.2	1.6	2.1	1.2	-1.6	-8.7
	% growth re. one year ago	14.0	14.4	15.2	9.9	13.0	15.7	12.4	15.0	11.5	6.2	3.3	-7.2	
	Actual Wafer-Starts	Wafer-starts per week x 1000	1591.2	1600.3	1628.3	1629.9	1760.2	1881.2	1914.5	1946.6	1962.1	1937.0	1493.2	1134.8
		% growth re. preceding quarter	4.4	0.6	1.8	0.1	8.0	6.9	1.8	1.7	0.8	-1.3	-22.9	-24.0
	% growth re. one year ago	16.8	12.4	8.5	6.9	10.6	17.6	17.6	19.4	11.5	3.0	-22.0	-41.7	
	Utilisation	in percent (%)	91.2	88.5	86.4	87.1	89.3	89.9	90.4	90.5	89.3	87.1	68.3	56.8

		2Q 06	3Q 06	4Q 06	1Q 07	2Q 07	3Q 07	4Q 07	1Q 08	2Q 08	3Q 08	4Q 08	1Q 09	
DISCRETES (6 inch equivs.)	Capacity	Wafer-starts per week x1000	233.8	242.9	252.9	338.5	359.3	355.3	362.0	363.0	362.9	362.1	352.4	334.3
		% growth re. preceding quarter	5.9	3.9	4.1	n.a.	6.1	-1.1	1.9	0.3	0.0	-0.2	-2.7	-5.1
	% growth re. one year ago				n.a.	n.a.	n.a.	n.a.	7.2	1.0	1.9	-2.7	-7.9	
	Actual Wafer-Starts	Wafer-starts per week x1000	220.4	228.8	231.0	300.6	311.8	304.6	307.1	296.4	304.5	307.8	244.8	142.6
		% growth re. preceding quarter	7.0	3.8	1.0	n.a.	3.7	-2.3	0.8	-3.5	2.7	1.1	-20.5	-41.7
	% growth re. one year ago				n.a.	n.a.	n.a.	n.a.	-1.4	-2.3	1.1	-20.3	-51.9	
	Utilisation	in percent (%)	94.3	94.2	91.3	88.8	86.8	85.7	84.8	81.7	83.9	85.0	69.5	42.7

		2Q 06	3Q 06	4Q 06	1Q 07	2Q 07	3Q 07	4Q 07	1Q 08	2Q 08	3Q 08	4Q 08	1Q 09	
TOTAL Semiconductors	Capacity	Wafer-starts per week x1000	1876.1	1944.8	2026.1	2062.5	2173.9	2292.8	2321.7	2356.3	2402.1	2427.0	2385.6	2185.6
		% growth re. preceding quarter	2.7	3.7	4.2	1.8	5.4	5.5	1.3	1.5	1.9	1.0	-1.7	-8.4
	% growth re. one year ago				n.a.	n.a.	n.a.	n.a.	14.2	10.5	5.9	2.8	-7.2	
	Actual Wafer-Starts	Wafer-starts per week x1000	1715.3	1729.1	1758.4	1799.1	1935.8	2052.7	2087.4	2113.5	2133.6	2110.3	1631.0	1215.1
		% growth re. preceding quarter	4.6	0.8	1.7	2.3	7.6	6.0	1.7	1.2	1.0	-1.1	-22.7	-25.5
	% growth re. one year ago				n.a.	n.a.	n.a.	n.a.	17.5	10.2	2.8	-21.9	-42.5	
	Utilisation	in percent (%)	91.4	88.9	86.8	87.2	89.0	89.5	89.9	89.7	88.8	87.0	68.4	55.6

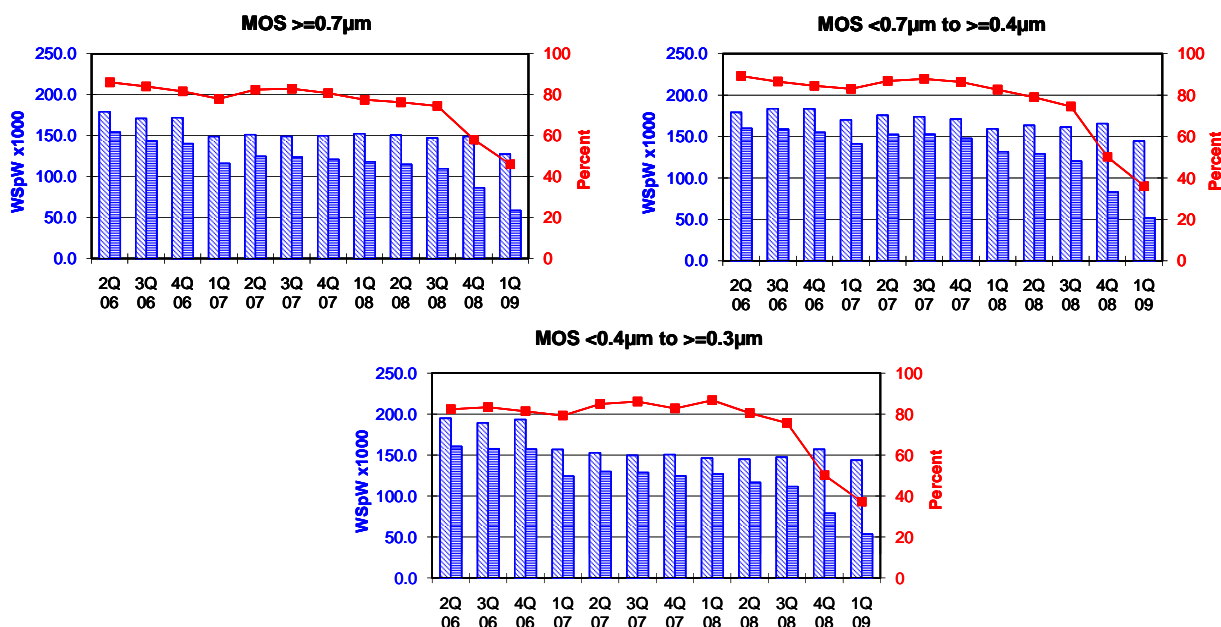
Yellow coloured cells reflect revised inputs Green bordered cells contain changes resulting from revised inputs

These statistics are based on data supplied by merchant SC manufacturers who together represent the great majority of the world's SC production.

All MOS data are expressed in 8 inch equivalent wafers.

WSpW = Wafer-Starts per Week.

Legends :  Capacity WSpW  Actual WSpW  Utilisation of capacity in percent



			2Q 06	3Q 06	4Q 06	1Q 07	2Q 07	3Q 07	4Q 07	1Q 08	2Q 08	3Q 08	4Q 08	1Q 09
MOS >=0.7µm	Capacity	Wafer-starts per week x1000	179.0	170.9	171.8	148.8	151.2	148.9	149.8	152.2	150.5	147.0	148.7	127.3
		% growth re. preceding quarter	-3.7	-4.5	0.5	-13.4	1.6	-1.5	0.6	1.6	-1.1	-2.3	1.2	-14.4
		% growth re. one year ago	9.9	-2.6	-1.8	-20.0	-15.5	-12.9	-12.8	2.3	-0.5	-1.3	-0.7	-16.4
	Actual Wafer-Starts	Wafer-starts per week x1000	154.0	143.6	140.2	116.0	124.6	123.5	120.9	118.0	114.8	109.5	86.3	58.6
		% growth re. preceding quarter	-3.0	-6.8	-2.4	-17.3	7.4	-0.9	-2.1	-2.4	-2.7	-4.6	-21.2	-32.1
		% growth re. one year ago	14.2	-2.8	-7.9	-27.0	-19.1	-14.0	-13.8	1.7	-7.9	-11.3	-28.6	-50.3
Utilisation	in percent (%)	86.0	84.0	81.6	78.0	82.4	82.9	80.7	77.5	76.3	74.5	58.0	46.0	

			2Q 06	3Q 06	4Q 06	1Q 07	2Q 07	3Q 07	4Q 07	1Q 08	2Q 08	3Q 08	4Q 08	1Q 09
MOS <0.7µm to >=0.4µm	Capacity	Wafer-starts per week x1000	179.0	183.5	183.3	170.0	175.5	173.8	170.9	159.1	163.4	161.2	165.6	144.6
		% growth re. preceding quarter	-5.3	2.5	-0.1	-7.3	3.2	-1.0	-1.7	-6.9	2.7	-1.3	2.7	-12.7
		% growth re. one year ago	-4.4	-2.5	-2.9	-10.1	-2.0	-5.3	-6.8	-6.4	-6.9	-7.2	-3.1	-9.1
	Actual Wafer-Starts	Wafer-starts per week x1000	159.7	158.8	154.9	141.2	152.4	152.7	147.6	131.5	129.0	120.1	83.0	52.1
		% growth re. preceding quarter	3.8	-0.6	-2.5	-8.8	7.9	0.2	-3.3	-10.9	-1.9	-6.9	-30.9	-37.2
		% growth re. one year ago	-5.3	-4.3	-7.1	-8.2	-4.6	-3.8	-4.7	-6.9	-15.4	-21.3	-43.8	-60.4
Utilisation	in percent (%)	89.2	86.5	84.5	83.1	86.8	87.9	86.4	82.7	78.9	74.5	50.1	36.0	

			2Q 06	3Q 06	4Q 06	1Q 07	2Q 07	3Q 07	4Q 07	1Q 08	2Q 08	3Q 08	4Q 08	1Q 09
MOS <0.4µm to >=0.3µm	Capacity	Wafer-starts per week x1000	194.8	189.2	193.2	156.7	152.7	149.5	150.5	146.2	144.9	147.3	156.9	143.7
		% growth re. preceding quarter	0.3	-2.9	2.1	-18.9	-2.6	-2.1	0.7	-2.9	-0.9	1.7	6.5	-8.4
		% growth re. one year ago	5.1	-2.9	-0.8	-19.4	-21.6	-21.0	-22.1	-6.7	-5.1	-1.5	4.3	-1.7
	Actual Wafer-Starts	Wafer-starts per week x1000	160.5	157.7	157.2	124.2	129.7	128.7	124.5	126.8	116.6	111.4	78.8	53.5
		% growth re. preceding quarter	2.6	-1.7	-0.3	-21.0	4.4	-0.8	-3.3	1.8	-8.0	-4.5	-29.3	-32.1
		% growth re. one year ago	2.2	-4.8	-5.6	-20.6	-19.2	-18.4	-20.8	2.1	-10.1	-13.4	-36.7	-57.8
Utilisation	in percent (%)	82.4	83.4	81.4	79.3	84.9	86.1	82.7	86.7	80.5	75.6	50.2	37.2	

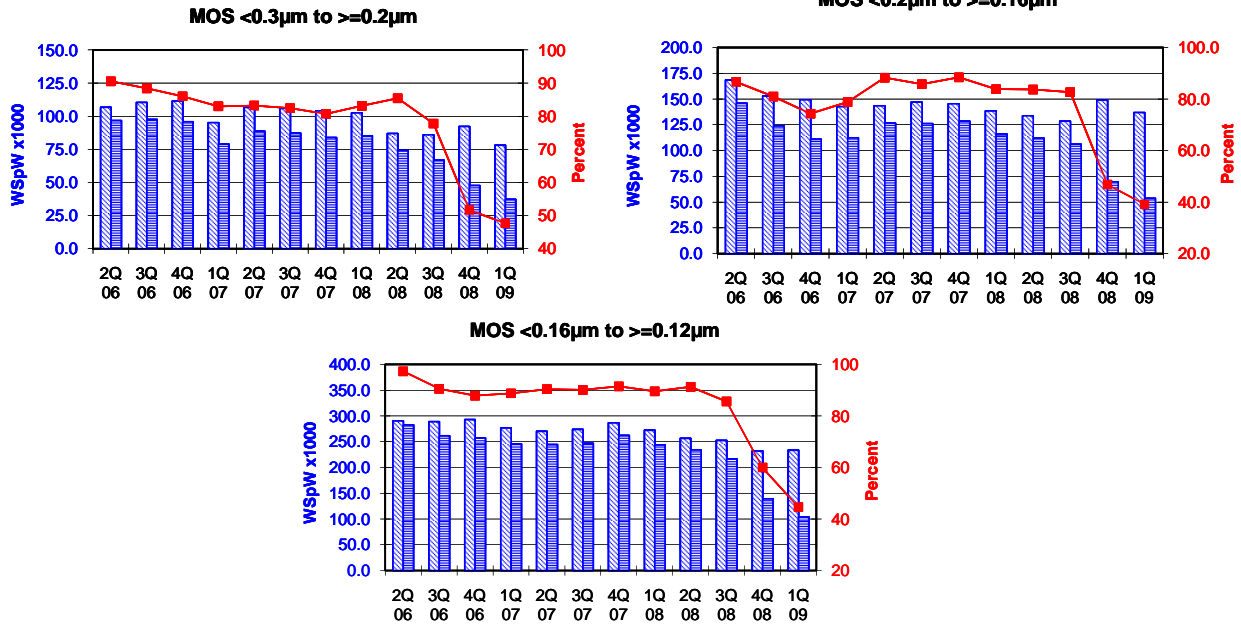
 Yellow coloured cells reflect revised inputs  Green bordered cells contain changes resulting from revised inputs

These statistics are based on data supplied by merchant SC manufacturers who together represent the great majority of the world's SC production.

All MOS data are expressed in 8 inch equivalent wafers.

WSpW = Wafer-Starts per Week.

Legends : Capacity WSpW Actual WSpW Utilisation of capacity in percent



			2Q 06	3Q 06	4Q 06	1Q 07	2Q 07	3Q 07	4Q 07	1Q 08	2Q 08	3Q 08	4Q 08	1Q 09
MOS <0.3µm to >=0.2µm	Capacity	Wafer-starts per week x1000	106.8	110.4	111.5	95.2	106.7	105.9	104.1	102.6	87.0	86.0	92.3	78.2
		% growth re. preceding quarter	4.4	3.4	1.0	-14.6	12.1	-0.7	-1.7	-1.4	-15.2	-1.1	7.3	-15.3
		% growth re. one year ago	1.6	8.6	4.6	-6.9	-0.1	-4.1	-6.6	7.8	-18.5	-18.8	-11.3	-23.8
	Actual Wafer-Starts	Wafer-starts per week x1000	96.7	97.6	95.9	79.0	88.8	87.3	84.0	85.3	74.3	66.9	47.7	37.3
		% growth re. preceding quarter	3.8	0.9	-1.7	-17.6	12.4	-1.7	-3.8	1.5	-12.9	-10.0	-28.7	-21.8
		% growth re. one year ago	16.5	12.4	5.6	-15.2	-8.2	-10.6	-12.4	8.0	-16.3	-23.4	-43.2	-56.3
	Utilisation	in percent (%)	90.5	88.4	86.0	83.0	83.2	82.4	80.7	83.1	85.4	77.8	51.7	47.7

			2Q 06	3Q 06	4Q 06	1Q 07	2Q 07	3Q 07	4Q 07	1Q 08	2Q 08	3Q 08	4Q 08	1Q 09
MOS <0.2µm to >=0.16µm	Capacity	Wafer-starts per week x1000	168.4	152.9	149.2	142.5	143.4	147.0	145.3	138.4	133.7	128.4	149.0	136.9
		% growth re. preceding quarter	2.9	-9.2	-2.4	-4.5	0.6	2.5	-1.2	-4.7	-3.4	-4.0	16.0	-8.1
		% growth re. one year ago	-2.2	-7.4	-8.2	-12.9	-14.8	-3.9	-2.6	-2.9	-6.8	-12.7	2.5	-1.1
	Actual Wafer-Starts	Wafer-starts per week x1000	145.9	123.8	110.9	112.3	126.6	126.1	128.5	116.0	111.9	106.1	69.7	53.5
		% growth re. preceding quarter	6.2	-15.1	-10.4	1.3	12.7	-0.4	1.9	-9.7	-3.5	-5.2	-34.3	-23.2
		% growth re. one year ago	-4.4	-14.0	-25.4	-18.3	-13.2	1.9	15.9	3.3	-11.6	-15.9	-45.8	-53.9
	Utilisation	in percent (%)	86.6	81.0	74.3	78.8	88.3	85.8	88.4	83.8	83.7	82.6	46.8	39.1

			2Q 06	3Q 06	4Q 06	1Q 07	2Q 07	3Q 07	4Q 07	1Q 08	2Q 08	3Q 08	4Q 08	1Q 09
MOS <0.16µm to >=0.12µm	Capacity	Wafer-starts per week x 1000	290.4	288.8	292.9	276.7	270.4	274.0	286.7	272.4	256.6	252.7	232.1	233.5
		% growth re. preceding quarter	-2.5	-0.6	1.4	-5.5	-2.3	1.3	4.6	-5.0	-5.8	-1.5	-8.2	0.6
		% growth re. one year ago	1.5	3.9	2.9	-7.1	-6.9	-5.1	-2.1	-1.6	-5.1	-7.8	-19.0	-14.3
	Actual Wafer-Starts	Wafer-starts per week x1000	282.7	261.6	257.4	245.7	244.5	247.0	262.3	244.0	234.3	216.4	139.2	104.2
		% growth re. preceding quarter	-2.8	-7.5	-1.6	-4.5	-0.5	1.0	6.2	-7.0	-4.0	-7.6	-35.7	-25.1
		% growth re. one year ago	5.4	-1.8	-7.3	-15.5	-13.5	-5.6	1.9	-0.7	-4.2	-12.4	-46.9	-57.3
	Utilisation	in percent (%)	97.3	90.6	87.9	88.8	90.4	90.1	91.5	89.6	91.3	85.6	60.0	44.6

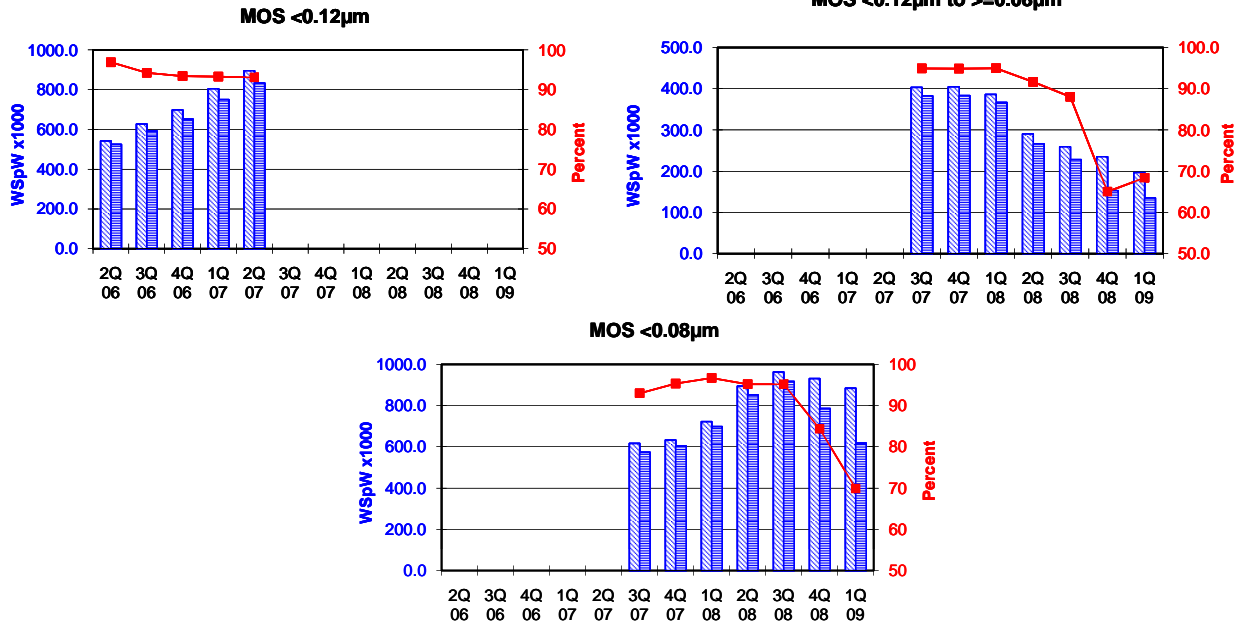
Yellow coloured cells reflect revised inputs Green bordered cells contain changes resulting from revised inputs

These statistics are based on data supplied by merchant SC manufacturers who together represent the great majority of the world's SC production.

All MOS data are expressed in 8 inch equivalent wafers.

WSpW = Wafer-Starts per Week.

Legends: Capacity WSpW Actual WSpW Utilisation of capacity in percent



		2Q 06	3Q 06	4Q 06	1Q 07	2Q 07	3Q 07	4Q 07	1Q 08	2Q 08	3Q 08	4Q 08	1Q 09
MOS <0.12µm	Capacity	Wafer-starts per week x1000	542.0	627.6	697.9	804.5	895.5						
		% growth re. preceding quarter	13.4	15.8	11.2	15.3	11.3						
		% growth re. one year ago	64.8	65.3	63.7	68.3	65.2						
	Actual Wafer-Starts	Wafer-starts per week x1000	525.2	591.6	652.1	750.8	833.8						
		% growth re. preceding quarter	13.4	12.6	10.2	15.1	11.1						
		% growth re. one year ago	67.4	60.3	54.7	62.2	58.8						
Utilisation	in percent (%)	96.9	94.3	93.4	93.3	93.1							

MOS <0.12µm to >=0.08µm	Capacity	Wafer-starts per week x1000					403.1	404.1	385.8	290.1	258.8	234.7	196.6
		% growth re. preceding quarter					n.a.	0.2	-4.5	-24.8	-10.8	-9.3	-16.2
		% growth re. one year ago					n.a.	n.a.	n.a.	n.a.	-35.8	-41.9	-49.0
	Actual Wafer-Starts	Wafer-starts per week x1000					382.6	383.4	366.4	265.9	227.9	152.6	134.5
		% growth re. preceding quarter					n.a.	0.2	-4.4	-27.4	-14.3	-33.0	-11.9
		% growth re. one year ago					n.a.	n.a.	n.a.	n.a.	-40.4	-60.2	-63.3
Utilisation	in percent (%)					94.9	94.9	95.0	91.7	88.1	65.0	68.4	

MOS <0.08µm	Capacity	Wafer-starts per week x1000					616.9	633.4	722.1	894.6	963.1	931.1	884.3
		% growth re. preceding quarter					n.a.	2.7	14.0	23.9	7.7	-3.3	-5.0
		% growth re. one year ago					n.a.	n.a.	n.a.	n.a.	56.1	47.0	22.5
	Actual Wafer-Starts	Wafer-starts per week x1000					573.8	604.1	698.5	851.8	917.2	785.8	618.1
		% growth re. preceding quarter					n.a.	5.3	15.6	21.9	7.7	-14.3	-21.3
		% growth re. one year ago					n.a.	n.a.	n.a.	n.a.	59.8	30.1	-11.5
Utilisation	in percent (%)					93.0	95.4	96.7	95.2	95.2	84.4	69.9	

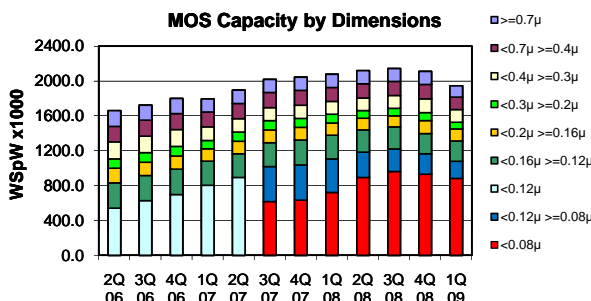
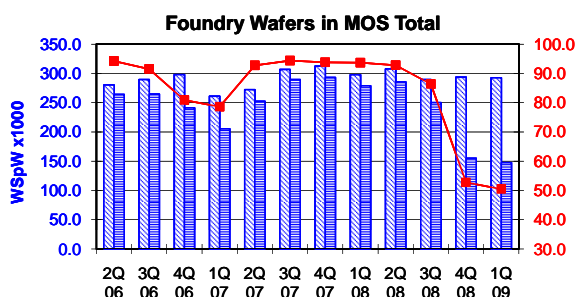
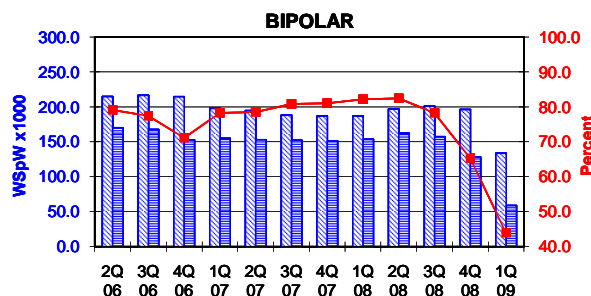
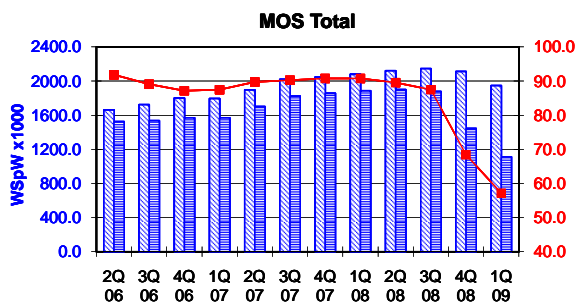
Yellow colour cells reflect revised inputs Green bordered cells contain changes resulting from revised inputs

These statistics are based on data supplied by merchant SC manufacturers who together represent the great majority of the world's SC production.

All MOS data are expressed in 8 inch equivalent wafers. Bipolar data are expressed in 5 inch equivalent wafers.

WSpW = Wafer-Starts per Week.

Legends : Capacity WSpW Actual WSpW Utilisation of capacity in percent



			2Q 06	3Q 06	4Q 06	1Q 07	2Q 07	3Q 07	4Q 07	1Q 08	2Q 08	3Q 08	4Q 08	1Q 09
MOS Total	Capacity	Wafer-starts per week x 1000	1660.4	1723.3	1799.8	1794.4	1895.4	2019.1	2044.8	2078.8	2120.8	2144.5	2110.4	1945.1
		% growth re. preceding quarter	3.1	3.8	4.4	-0.3	5.6	6.5	1.3	1.7	2.0	1.1	-1.6	-7.8
	Actual Wafer-Starts	Wafer-starts per week x1000	1524.7	1534.7	1568.6	1569.2	1700.4	1821.7	1855.3	1886.5	1898.6	1875.5	1443.1	1111.8
		% growth re. preceding quarter	16.3	16.2	17.0	11.4	14.2	17.2	13.6	15.8	11.9	6.2	3.2	-6.4
Utilisation	% growth re. one year ago	19.3	14.0	10.1	8.0	11.5	18.7	18.3	20.2	11.7	3.0	-22.2	-41.1	
	in percent (%)	91.8	89.1	87.2	87.4	89.7	90.2	90.7	90.7	89.5	87.5	68.4	57.2	

			2Q 06	3Q 06	4Q 06	1Q 07	2Q 07	3Q 07	4Q 07	1Q 08	2Q 08	3Q 08	4Q 08	1Q 09
BIPOLAR (5 inch equivs.)	Capacity	Wafer-starts per week x1000	214.9	216.7	214.7	198.2	194.8	188.3	186.9	187.0	197.0	201.1	196.3	133.7
		% growth re. preceding quarter	-8.5	0.8	-0.9	-7.7	-1.7	-3.3	-0.7	0.1	5.3	2.1	-2.4	-31.9
	Actual Wafer-Starts	Wafer-starts per week x1000	170.1	167.8	152.8	155.2	153.0	152.3	151.5	153.7	162.5	157.4	128.2	58.8
		% growth re. preceding quarter	-17.9	-12.9	-13.0	-15.6	-9.4	-13.1	-12.9	-5.7	1.1	6.8	5.0	-28.5
Utilisation	% growth re. one year ago	-6.4	-1.4	-8.9	1.6	-1.4	-0.5	-0.5	1.5	5.7	-3.1	-18.6	-54.1	
	in percent (%)	-21.2	-16.2	-21.5	-14.6	-10.1	-9.2	-0.9	-1.0	6.2	3.3	-15.4	-61.7	

			2Q 06	3Q 06	4Q 06	1Q 07	2Q 07	3Q 07	4Q 07	1Q 08	2Q 08	3Q 08	4Q 08	1Q 09
Foundry Wafers in MOS Total	Capacity	Wafer-starts per week x1000	280.3	289.4	298.1	261.1	272.2	306.6	312.5	297.7	307.5	289.5	293.7	292.5
		% growth re. preceding quarter	3.1	3.2	3.0	-12.4	4.3	12.6	1.9	-4.7	3.3	-5.9	1.5	-0.4
	Actual Wafer-Starts	Wafer-starts per week x1000	264.1	264.7	241.1	205.3	252.4	289.4	293.1	278.9	285.3	250.0	155.0	147.6
		% growth re. preceding quarter	11.1	12.7	12.8	-4.0	-2.9	5.9	4.8	14.0	13.0	-5.6	-6.0	-1.7
Utilisation	% growth re. one year ago	5.9	0.2	-8.9	-14.8	22.9	14.7	1.3	-4.8	2.3	-12.4	-38.0	-4.8	
	in percent (%)	26.0	12.4	-3.8	-17.6	-4.4	9.3	21.6	35.8	13.0	-13.6	-47.1	-47.1	

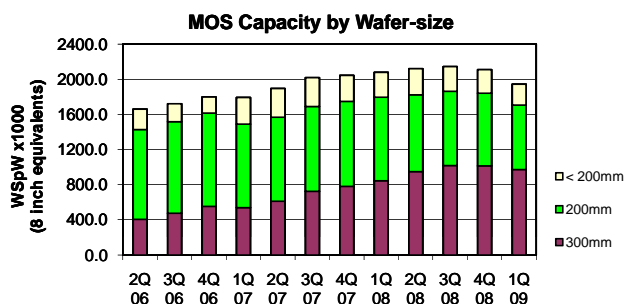
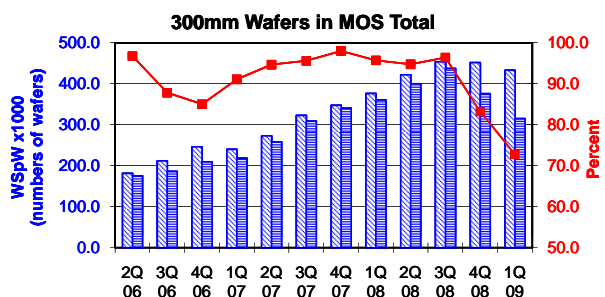
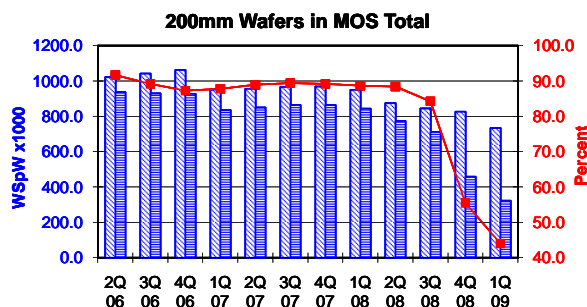
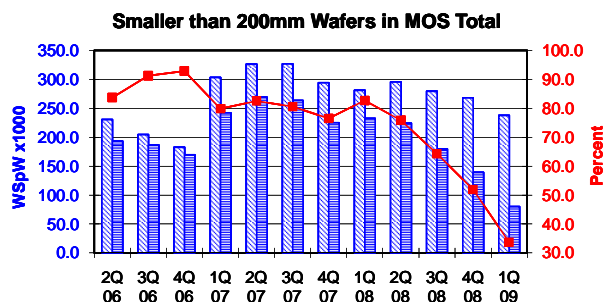
Yellow coloured cells reflect revised inputs Green bordered cells contain changes resulting from revised inputs

These statistics are based on data supplied by merchant SC manufacturers who together represent the great majority of the world's SC production.

All MOS data are expressed in 8 inch equivalent wafers, except for the 300mm wafer data where annotated as "numbers of wafers".

WSpW = Wafer-Starts per Week.

Legends: Capacity WSpW Actual WSpW Utilisation of capacity in percent



			2Q 06	3Q 06	4Q 06	1Q 07	2Q 07	3Q 07	4Q 07	1Q 08	2Q 08	3Q 08	4Q 08	1Q 09
< 200mm Wafers in MOS Total	Capacity	Wafer-starts per week x 1000	230.7	204.5	182.7	303.3	326.2	326.8	294.2	281.2	295.7	279.4	268.1	237.8
		% growth re. preceding quarter	-12.8	-11.3	-10.7	66.0	7.6	0.2	-10.0	-4.4	5.1	-5.5	-4.1	-11.3
		% growth re. one year ago	-13.7	-15.7	-31.1	14.7	41.4	59.8	61.0	-7.3	-9.4	-14.5	-8.9	-15.4
	Actual Wafer-Starts	Wafer-starts per week x1000	193.1	186.7	169.7	242.3	269.2	263.4	225.1	232.5	224.3	179.7	139.2	80.1
		% growth re. preceding quarter	-3.7	-3.4	-9.1	42.7	11.1	-2.2	-14.5	3.3	-3.5	-19.9	-22.5	-42.4
		% growth re. one year ago	-12.3	-3.7	-18.4	20.9	39.4	41.1	32.6	-4.0	-16.7	-31.8	-38.1	-65.5
	Utilisation	in percent (%)	83.7	91.3	92.9	79.9	82.5	80.6	76.5	82.7	75.9	64.3	51.9	33.7

			2Q 06	3Q 06	4Q 06	1Q 07	2Q 07	3Q 07	4Q 07	1Q 08	2Q 08	3Q 08	4Q 08	1Q 09
200mm wafers in MOS Total	Capacity	Wafer-starts per week x1000	1021.6	1041.8	1062.7	951.1	955.4	966.2	968.7	950.5	875.2	844.7	826.0	733.5
		% growth re. preceding quarter	2.4	2.0	2.0	-10.5	0.5	1.1	0.3	-1.9	-7.9	-3.5	-2.2	-11.2
		% growth re. one year ago	9.3	6.2	7.9	-4.7	-6.5	-7.3	-8.8	-0.1	-8.4	-12.6	-14.7	-22.8
	Actual Wafer-Starts	Wafer-starts per week x1000	936.7	929.1	927.5	835.1	850.0	864.0	863.9	843.1	774.1	711.9	458.1	322.7
		% growth re. preceding quarter	2.1	-0.8	-0.2	-10.0	1.8	1.6	0.0	-2.4	-8.2	-8.0	-35.7	-29.6
		% growth re. one year ago	9.8	2.0	-0.8	-9.0	-9.3	-7.0	-6.9	1.0	-8.9	-17.6	-47.0	-61.7
	Utilisation	in percent (%)	91.7	89.2	87.3	87.8	89.0	89.4	89.2	88.7	88.4	84.3	55.5	44.0

			2Q 06	3Q 06	4Q 06	1Q 07	2Q 07	3Q 07	4Q 07	1Q 08	2Q 08	3Q 08	4Q 08	1Q 09
300mm wafers in MOS Total	Capacity	WSpW x 1000 expressed in 8 inch equivalent wafers	408.2	477.0	554.4	540.0	613.8	726.1	781.9	847.1	950.0	1020.4	1016.3	973.8
		WSpW x 1000 expressed in numbers of wafers	181.4	212.0	246.4	240.0	272.8	322.7	347.5	376.5	422.2	453.5	451.7	432.8
		% growth re. preceding quarter	17.1	16.9	16.2	-2.6	13.7	18.3	7.7	8.3	12.1	7.4	-0.4	-4.2
	Actual Wafer-Starts	WSpW x 1000 expressed in 8 inch equivalent wafers	394.9	419.0	471.4	491.9	581.2	694.4	766.4	810.9	900.2	983.9	845.8	709.0
		WSpW x 1000 expressed in numbers of wafers	175.5	186.2	209.5	218.6	258.3	308.6	340.6	360.4	400.1	437.3	375.9	315.1
		% growth re. preceding quarter	17.8	6.1	12.5	4.3	18.2	19.5	10.4	5.8	11.0	9.3	-14.0	-16.2
	Utilisation	in percent (%)	96.7	87.8	85.0	91.1	94.7	95.6	98.0	95.7	94.8	96.4	83.2	72.8

Yellow coloured cells reflect revised inputs Green bordered cells contain changes resulting from revised inputs

These statistics are based on data supplied by merchant SC manufacturers who together represent the great majority of the world's SC production.