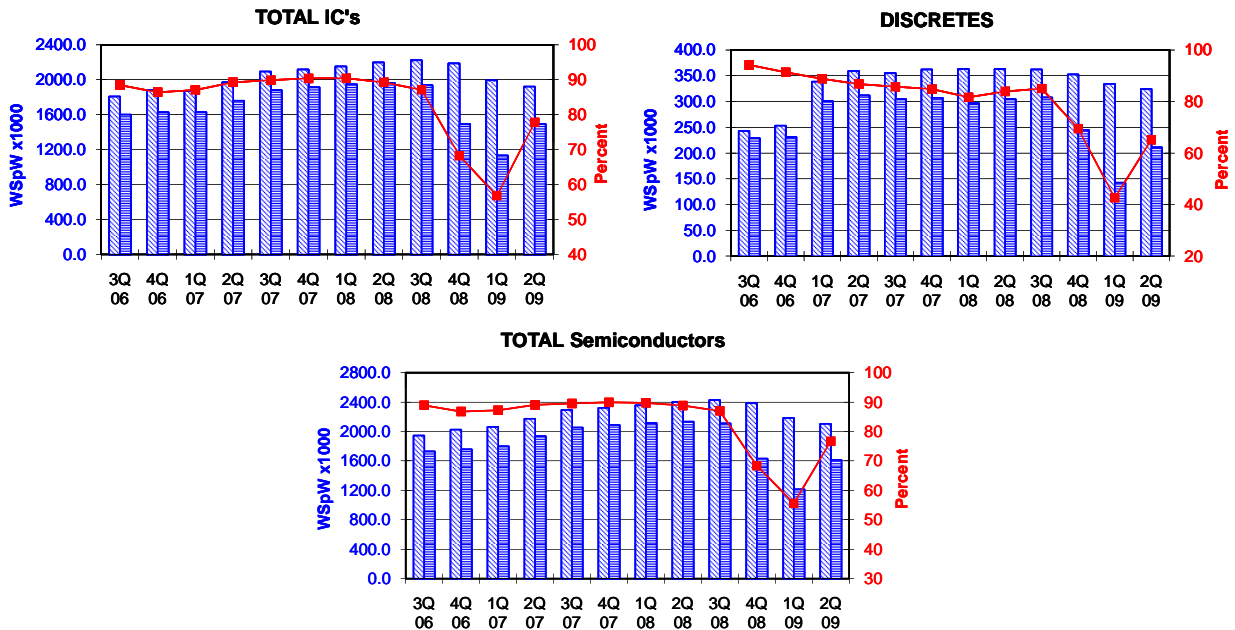


TOTAL IC's and TOTAL Semiconductors data are expressed in 8 inch equivalent wafers. DISCRETES data are expressed in 6 inch equivalent wafers. "TOTAL IC's" include Bipolar data, which were converted for this purpose from 5 inch to 8 inch equivalent wafers by the factor 0.391. "TOTAL Semiconductors" include DISCRETES data, which were converted for this purpose from 6 inch to 8 inch equivalent wafers by the factor 0.563.

WSpW = Wafer-Starts per Week.

Legends : Capacity WSpW Actual WSpW Utilisation of capacity in percent



		3Q 06	4Q 06	1Q 07	2Q 07	3Q 07	4Q 07	1Q 08	2Q 08	3Q 08	4Q 08	1Q 09	2Q 09	
TOTAL IC's	Capacity	Wafer-starts per week x 1000	1808.0	1883.7	1871.9	1971.6	2092.7	2117.9	2151.9	2197.8	2223.1	2187.2	1995.0	1920.9
		% growth re. preceding quarter	3.6	4.2	-0.6	5.3	6.1	1.2	1.6	2.1	1.2	-1.6	-8.8	-3.7
		% growth re. one year ago	14.4	15.2	9.9	13.0	15.7	12.4	15.0	11.5	6.2	3.3	-7.3	-12.6
	Actual Wafer-Starts	Wafer-starts per week x 1000	1600.3	1628.3	1629.9	1760.2	1881.2	1914.5	1946.6	1962.1	1937.0	1493.2	1133.3	1494.9
		% growth re. preceding quarter	0.6	1.8	0.1	8.0	6.9	1.8	1.7	0.8	-1.3	-22.9	-24.1	31.9
		% growth re. one year ago	12.4	8.5	6.9	10.6	17.6	17.6	19.4	11.5	3.0	-22.0	-41.8	-23.8
Utilisation	in percent (%)	88.5	86.4	87.1	89.3	89.9	90.4	90.5	89.3	87.1	68.3	56.8	77.8	

		3Q 06	4Q 06	1Q 07	2Q 07	3Q 07	4Q 07	1Q 08	2Q 08	3Q 08	4Q 08	1Q 09	2Q 09	
DISCRETES (6 inch equivs.)	Capacity	Wafer-starts per week x1000	242.9	252.9	338.5	359.3	355.3	362.0	363.0	362.9	362.1	352.4	334.2	324.1
		% growth re. preceding quarter	3.9	4.1	n.a.	6.1	-1.1	1.9	0.3	0.0	-0.2	-2.7	-5.2	-3.0
		% growth re. one year ago			n.a.	n.a.	n.a.	n.a.	7.2	1.0	1.9	-2.7	-7.9	-10.7
	Actual Wafer-Starts	Wafer-starts per week x1000	228.8	231.0	300.6	311.8	304.6	307.1	296.4	304.5	307.8	244.8	142.4	211.1
		% growth re. preceding quarter	3.8	1.0	n.a.	3.7	-2.3	0.8	-3.5	2.7	1.1	-20.5	-41.8	48.2
		% growth re. one year ago			n.a.	n.a.	n.a.	n.a.	-1.4	-2.3	1.1	-20.3	-52.0	-30.7
Utilisation	in percent (%)	94.2	91.3	88.8	86.8	85.7	84.8	81.7	83.9	85.0	69.5	42.6	65.1	

		3Q 06	4Q 06	1Q 07	2Q 07	3Q 07	4Q 07	1Q 08	2Q 08	3Q 08	4Q 08	1Q 09	2Q 09	
TOTAL Semiconductors	Capacity	Wafer-starts per week x1000	1944.8	2026.1	2062.5	2173.9	2292.8	2321.7	2356.3	2402.1	2427.0	2385.6	2183.2	2103.4
		% growth re. preceding quarter	3.7	4.2	1.8	5.4	5.5	1.3	1.5	1.9	1.0	-1.7	-8.5	-3.7
		% growth re. one year ago			n.a.	n.a.	n.a.	n.a.	14.2	10.5	5.9	2.8	-7.3	-12.4
	Actual Wafer-Starts	Wafer-starts per week x1000	1729.1	1758.4	1799.1	1935.8	2052.7	2087.4	2113.5	2133.6	2110.3	1631.0	1213.5	1613.7
		% growth re. preceding quarter	0.8	1.7	2.3	7.6	6.0	1.7	1.2	1.0	-1.1	-22.7	-25.6	33.0
		% growth re. one year ago			n.a.	n.a.	n.a.	n.a.	17.5	10.2	2.8	-21.9	-42.6	-24.4
Utilisation	in percent (%)	88.9	86.8	87.2	89.0	89.5	89.9	89.7	88.8	87.0	68.4	55.6	76.7	

Yellow coloured cells reflect revised inputs

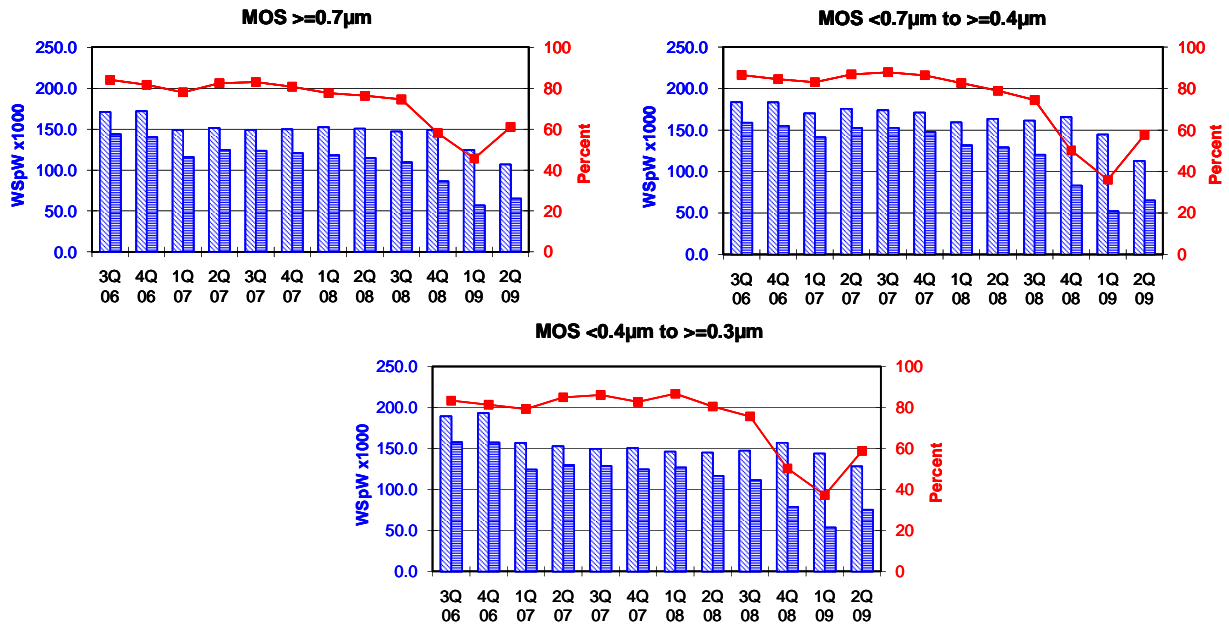
Green bordered cells contain changes resulting from revised inputs

These statistics are based on data supplied by merchant SC manufacturers who together represent the great majority of the world's SC production.

All MOS data are expressed in 8 inch equivalent wafers.

WSpW = Wafer-Starts per Week.

Legends : Capacity WSpW Actual WSpW Utilisation of capacity in percent



			3Q 06	4Q 06	1Q 07	2Q 07	3Q 07	4Q 07	1Q 08	2Q 08	3Q 08	4Q 08	1Q 09	2Q 09
MOS $\geq 0.7\mu\text{m}$	Capacity	Wafer-starts per week x1000	170.9	171.8	148.8	151.2	148.9	149.8	152.2	150.5	147.0	148.7	124.3	106.7
		% growth re. preceding quarter	-4.5	0.5	-13.4	1.6	-1.5	0.6	1.6	-1.1	-2.3	1.2	-16.4	-14.2
		% growth re. one year ago	-2.6	-1.8	-20.0	-15.5	-12.9	-12.8	2.3	-0.5	-1.3	-0.7	-18.3	-29.1
	Actual Wafer-Starts	Wafer-starts per week x1000	143.6	140.2	116.0	124.6	123.5	120.9	118.0	114.8	109.5	86.3	56.7	65.1
		% growth re. preceding quarter	-6.8	-2.4	-17.3	7.4	-0.9	-2.1	-2.4	-2.7	-4.6	-21.2	-34.3	14.8
		% growth re. one year ago	-2.8	-7.9	-27.0	-19.1	-14.0	-13.8	1.7	-7.9	-11.3	-28.6	-51.9	-43.3
	Utilisation	in percent (%)	84.0	81.6	78.0	82.4	82.9	80.7	77.5	76.3	74.5	58.0	45.6	61.0

			3Q 06	4Q 06	1Q 07	2Q 07	3Q 07	4Q 07	1Q 08	2Q 08	3Q 08	4Q 08	1Q 09	2Q 09
MOS $< 0.7\mu\text{m}$ to $\geq 0.4\mu\text{m}$	Capacity	Wafer-starts per week x1000	183.5	183.3	170.0	175.5	173.8	170.9	159.1	163.4	161.2	165.6	144.6	112.7
		% growth re. preceding quarter	2.5	-0.1	-7.3	3.2	-1.0	-1.7	-6.9	2.7	-1.3	2.7	-12.7	-22.1
		% growth re. one year ago	-2.5	-2.9	-10.1	-2.0	-5.3	-6.8	-6.4	-6.9	-7.2	-3.1	-9.1	-31.0
	Actual Wafer-Starts	Wafer-starts per week x1000	158.8	154.9	141.2	152.4	152.7	147.6	131.5	129.0	120.1	83.0	52.1	65.0
		% growth re. preceding quarter	-0.6	-2.5	-8.8	7.9	0.2	-3.3	-10.9	-1.9	-6.9	-30.9	-37.2	24.8
% growth re. one year ago		-4.3	-7.1	-8.2	-4.6	-3.8	-4.7	-6.9	-15.4	-21.3	-43.8	-60.4	-49.6	
Utilisation	in percent (%)	86.5	84.5	83.1	86.8	87.9	86.4	82.7	78.9	74.5	50.1	36.0	57.7	

			3Q 06	4Q 06	1Q 07	2Q 07	3Q 07	4Q 07	1Q 08	2Q 08	3Q 08	4Q 08	1Q 09	2Q 09
MOS $< 0.4\mu\text{m}$ to $\geq 0.3\mu\text{m}$	Capacity	Wafer-starts per week x1000	189.2	193.2	156.7	152.7	149.5	150.5	146.2	144.9	147.3	156.9	143.8	128.1
		% growth re. preceding quarter	-2.9	2.1	-18.9	-2.6	-2.1	0.7	-2.9	-0.9	1.7	6.5	-8.3	-10.9
		% growth re. one year ago	-2.9	-0.8	-19.4	-21.6	-21.0	-22.1	-6.7	-5.1	-1.5	4.3	-1.6	-11.6
	Actual Wafer-Starts	Wafer-starts per week x1000	157.7	157.2	124.2	129.7	128.7	124.5	126.8	116.6	111.4	78.8	53.5	75.3
		% growth re. preceding quarter	-1.7	-0.3	-21.0	4.4	-0.8	-3.3	1.8	-8.0	-4.5	-29.3	-32.1	40.7
% growth re. one year ago		-4.8	-5.6	-20.6	-19.2	-18.4	-20.8	2.1	-10.1	-13.4	-36.7	-57.8	-35.4	
Utilisation	in percent (%)	83.4	81.4	79.3	84.9	86.1	82.7	86.7	80.5	75.6	50.2	37.2	58.8	

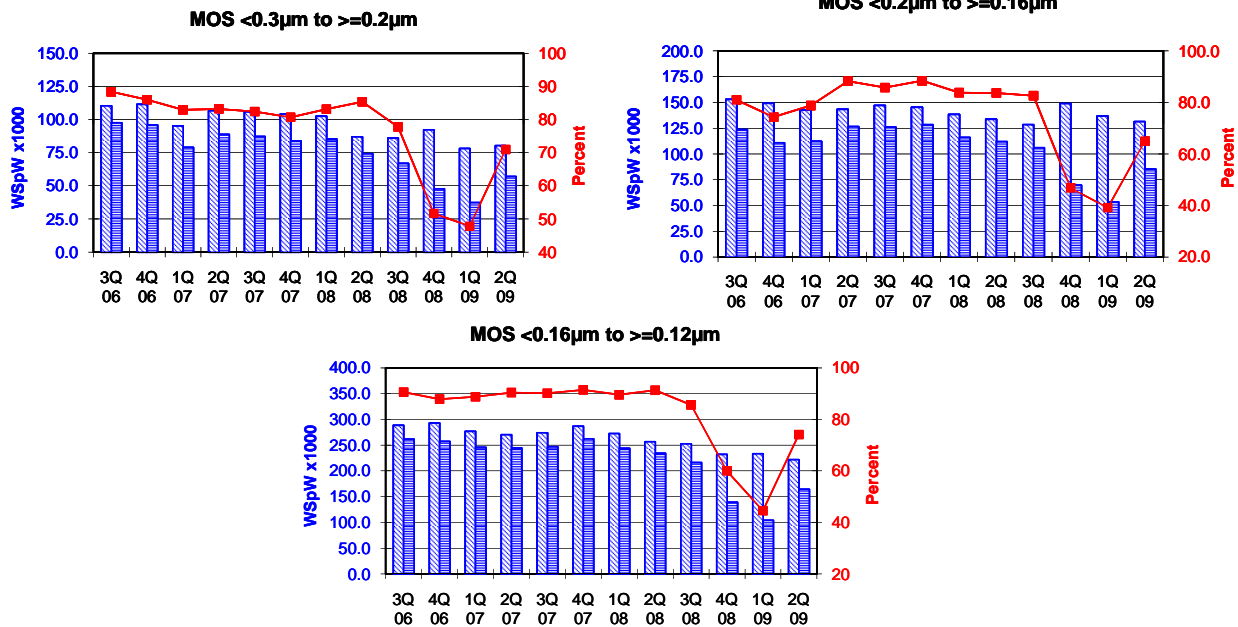
Yellow coloured cells reflect revised inputs Green bordered cells contain changes resulting from revised inputs

These statistics are based on data supplied by merchant SC manufacturers who together represent the great majority of the world's SC production.

All MOS data are expressed in 8 inch equivalent wafers.

WSpW = Wafer-Starts per Week.

Legends : Capacity WSpW Actual WSpW Utilisation of capacity in percent



			3Q 06	4Q 06	1Q 07	2Q 07	3Q 07	4Q 07	1Q 08	2Q 08	3Q 08	4Q 08	1Q 09	2Q 09
MOS <0.3µm to >=0.2µm	Capacity	Wafer-starts per week x1000	110.4	111.5	95.2	106.7	105.9	104.1	102.6	87.0	86.0	92.3	78.2	80.3
		% growth re. preceding quarter	3.4	1.0	-14.6	12.1	-0.7	-1.7	-1.4	-15.2	-1.1	7.3	-15.3	2.7
		% growth re. one year ago	8.6	4.6	-6.9	-0.1	-4.1	-6.6	7.8	-18.5	-18.8	-11.3	-23.8	-7.7
	Actual Wafer-Starts	Wafer-starts per week x1000	97.6	95.9	79.0	88.8	87.3	84.0	85.3	74.3	66.9	47.7	37.4	57.0
		% growth re. preceding quarter	0.9	-1.7	-17.6	12.4	-1.7	-3.8	1.5	-12.9	-10.0	-28.7	-21.6	52.4
Utilisation	in percent (%)	88.4	86.0	83.0	83.2	82.4	80.7	83.1	85.4	77.8	51.7	47.8	71.0	
MOS <0.2µm to >=0.16µm	Capacity	Wafer-starts per week x1000	152.9	149.2	142.5	143.4	147.0	145.3	138.4	133.7	128.4	149.0	136.8	131.4
		% growth re. preceding quarter	-9.2	-2.4	-4.5	0.6	2.5	-1.2	-4.7	-3.4	-4.0	16.0	-8.2	-3.9
		% growth re. one year ago	-7.4	-8.2	-12.9	-14.8	-3.9	-2.6	-2.9	-6.8	-12.7	2.5	-1.2	-1.7
	Actual Wafer-Starts	Wafer-starts per week x1000	123.8	110.9	112.3	126.6	126.1	128.5	116.0	111.9	106.1	69.7	53.5	85.4
		% growth re. preceding quarter	-15.1	-10.4	1.3	12.7	-0.4	1.9	-9.7	-3.5	-5.2	-34.3	-23.2	59.6
Utilisation	in percent (%)	81.0	74.3	78.8	88.3	85.8	88.4	83.8	83.7	82.6	46.8	39.1	65.0	
MOS <0.16µm to >=0.12µm	Capacity	Wafer-starts per week x 1000	288.8	292.9	276.7	270.4	274.0	286.7	272.4	256.6	252.7	232.1	233.5	221.9
		% growth re. preceding quarter	-0.6	1.4	-5.5	-2.3	1.3	4.6	-5.0	-5.8	-1.5	-8.2	0.6	-5.0
		% growth re. one year ago	3.9	2.9	-7.1	-6.9	-5.1	-2.1	-1.6	-5.1	-7.8	-19.0	-14.3	-13.5
	Actual Wafer-Starts	Wafer-starts per week x1000	261.6	257.4	245.7	244.5	247.0	262.3	244.0	234.3	216.4	139.2	104.1	164.5
		% growth re. preceding quarter	-7.5	-1.6	-4.5	-0.5	1.0	6.2	-7.0	-4.0	-7.6	-35.7	-25.2	58.0
Utilisation	in percent (%)	90.6	87.9	88.8	90.4	90.1	91.5	89.6	91.3	85.6	60.0	44.6	74.1	

Yellow coloured cells reflect revised inouts

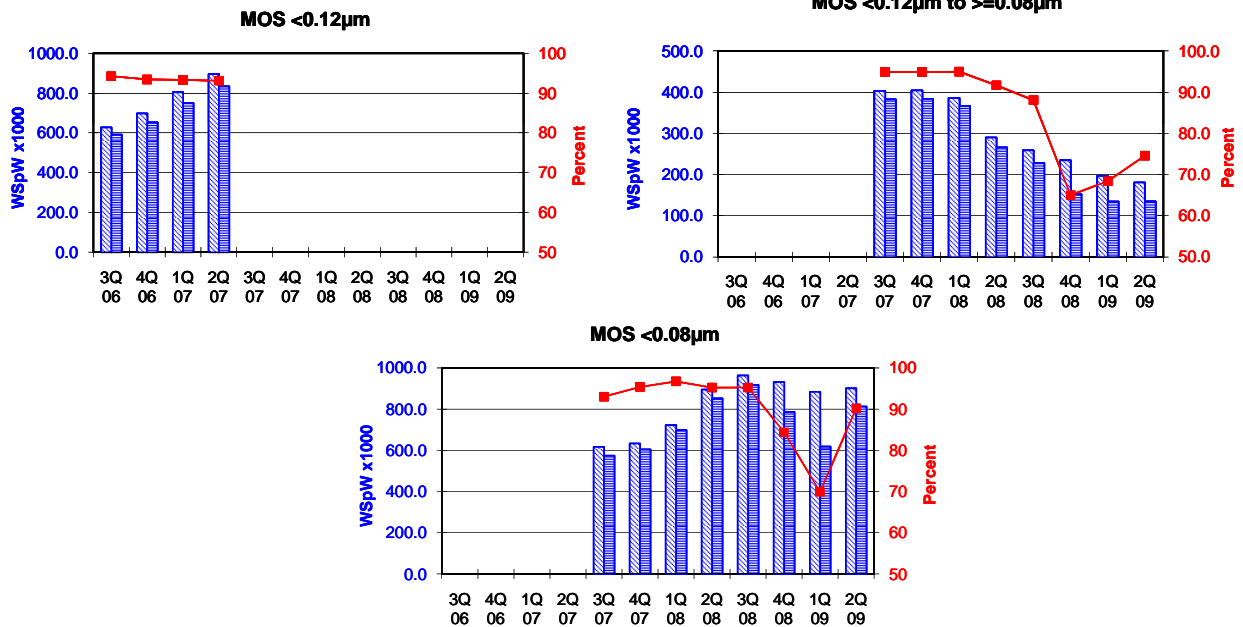
Green bordered cells contain changes resulting from revised inputs

These statistics are based on data supplied by merchant SC manufacturers who together represent the great majority of the world's SC production.

All MOS data are expressed in 8 inch equivalent wafers.

WSpW = Wafer-Starts per Week.

Legends : Capacity WSpW Actual WSpW Utilisation of capacity in percent



		3Q 06	4Q 06	1Q 07	2Q 07	3Q 07	4Q 07	1Q 08	2Q 08	3Q 08	4Q 08	1Q 09	2Q 09
MOS <0.12µm	Capacity	Wafer-starts per week x1000	627.6	697.9	804.5	895.5							
		% growth re. preceding quarter	15.8	11.2	15.3	11.3							
		% growth re. one year ago	65.3	63.7	68.3	65.2							
	Actual Wafer-Starts	Wafer-starts per week x1000	591.6	652.1	750.8	833.8							
		% growth re. preceding quarter	12.6	10.2	15.1	11.1							
		% growth re. one year ago	60.3	54.7	62.2	58.8							
Utilisation	in percent (%)	94.3	93.4	93.3	93.1								

		3Q 06	4Q 06	1Q 07	2Q 07	3Q 07	4Q 07	1Q 08	2Q 08	3Q 08	4Q 08	1Q 09	2Q 09
MOS <0.12µm to >=0.08µm	Capacity	Wafer-starts per week x1000				403.1	404.1	385.8	290.1	258.8	234.7	196.6	181.0
		% growth re. preceding quarter				n.a.	0.2	-4.5	-24.8	-10.8	-9.3	-16.2	-7.9
		% growth re. one year ago				n.a.	n.a.	n.a.	n.a.	-35.8	-41.9	-49.0	-37.6
	Actual Wafer-Starts	Wafer-starts per week x1000				382.6	383.4	366.4	265.9	227.9	152.6	134.5	135.0
		% growth re. preceding quarter				n.a.	0.2	-4.4	-27.4	-14.3	-33.0	-11.9	0.4
		% growth re. one year ago				n.a.	n.a.	n.a.	n.a.	-40.4	-60.2	-63.3	-49.2
Utilisation	in percent (%)				94.9	94.9	95.0	91.7	88.1	65.0	68.4	74.6	

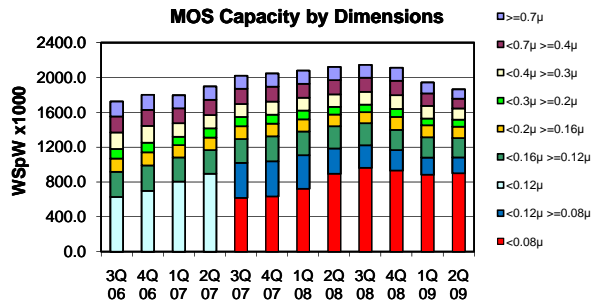
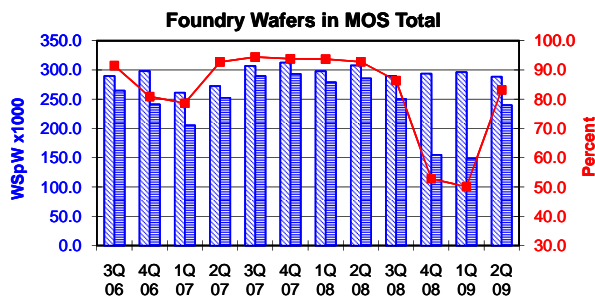
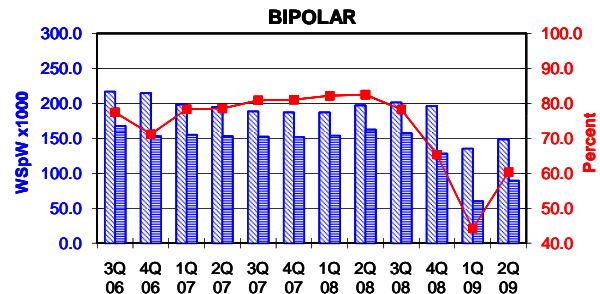
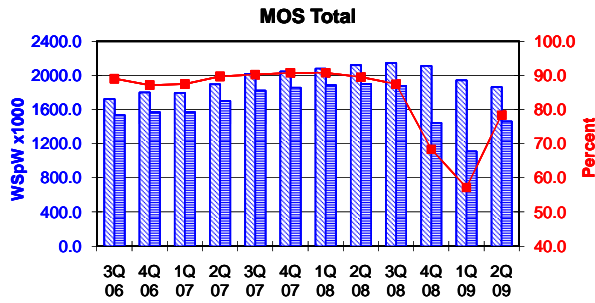
		3Q 06	4Q 06	1Q 07	2Q 07	3Q 07	4Q 07	1Q 08	2Q 08	3Q 08	4Q 08	1Q 09	2Q 09
MOS <0.08µm	Capacity	Wafer-starts per week x1000				616.9	633.4	722.1	894.6	963.1	931.1	884.3	900.9
		% growth re. preceding quarter				n.a.	2.7	14.0	23.9	7.7	-3.3	-5.0	1.9
		% growth re. one year ago				n.a.	n.a.	n.a.	n.a.	56.1	47.0	22.5	0.7
	Actual Wafer-Starts	Wafer-starts per week x1000				573.8	604.1	698.5	851.8	917.2	785.8	618.1	812.6
		% growth re. preceding quarter				n.a.	5.3	15.6	21.9	7.7	-14.3	-21.3	31.5
		% growth re. one year ago				n.a.	n.a.	n.a.	n.a.	59.8	30.1	-11.5	-4.6
Utilisation	in percent (%)				93.0	95.4	96.7	95.2	95.2	84.4	69.9	90.2	

These statistics are based on data supplied by merchant SC manufacturers who together represent the great majority of the world's SC production.

All MOS data are expressed in 8 inch equivalent wafers. Bipolar data are expressed in 5 inch equivalent wafers.

WSpW = Wafer-Starts per Week.

Legends : Capacity WSpW Actual WSpW Utilisation of capacity in percent



			3Q 06	4Q 06	1Q 07	2Q 07	3Q 07	4Q 07	1Q 08	2Q 08	3Q 08	4Q 08	1Q 09	2Q 09
MOS Total	Capacity	Wafer-starts per week x 1000	1723.3	1799.8	1794.4	1895.4	2019.1	2044.8	2078.8	2120.8	2144.5	2110.4	1942.1	1863.0
		% growth re. preceding quarter	3.8	4.4	-0.3	5.6	6.5	1.3	1.7	2.0	1.1	-1.6	-8.0	-4.1
	Actual Wafer-Starts	Wafer-starts per week x1000	1534.7	1568.6	1569.2	1700.4	1821.7	1855.3	1886.5	1898.6	1875.5	1443.1	1109.9	1459.9
		% growth re. preceding quarter	0.7	2.2	0.0	8.4	7.1	1.8	1.7	0.6	-1.2	-23.1	-23.1	31.5
Utilisation		in percent (%)	89.1	87.2	87.4	89.7	90.2	90.7	90.7	89.5	87.5	68.4	57.1	78.4

BIPOLAR (5 inch equivs.)	Capacity	Wafer-starts per week x1000	216.7	214.7	198.2	194.8	188.3	186.9	187.0	197.0	201.1	196.3	135.3	148.2
		% growth re. preceding quarter	0.8	-0.9	-7.7	-1.7	-3.3	-0.7	0.1	5.3	2.1	-2.4	-31.1	9.5
	Actual Wafer-Starts	Wafer-starts per week x1000	167.8	152.8	155.2	153.0	152.3	151.5	153.7	162.5	157.4	128.2	59.8	89.4
		% growth re. preceding quarter	-1.4	-8.9	1.6	-1.4	-0.5	-0.5	1.5	5.7	-3.1	-18.6	-53.4	49.5
Utilisation		in percent (%)	77.4	71.2	78.3	78.5	80.9	81.1	82.2	82.5	78.3	65.3	44.2	60.3

Foundry Wafers in MOS Total	Capacity	Wafer-starts per week x1000	289.4	298.1	261.1	272.2	306.6	312.5	297.7	307.5	289.5	293.7	296.1	288.3
		% growth re. preceding quarter	3.2	3.0	-12.4	4.3	12.6	1.9	-4.7	3.3	-5.9	1.5	0.8	-2.6
	Actual Wafer-Starts	Wafer-starts per week x1000	264.7	241.1	205.3	252.4	289.4	293.1	278.9	285.3	250.0	155.0	148.3	239.7
		% growth re. preceding quarter	0.2	-8.9	-14.8	22.9	14.7	1.3	-4.8	2.3	-12.4	-38.0	-4.3	61.6
Utilisation		in percent (%)	91.5	80.9	78.6	92.7	94.4	93.8	93.7	92.8	86.4	52.8	50.1	83.1

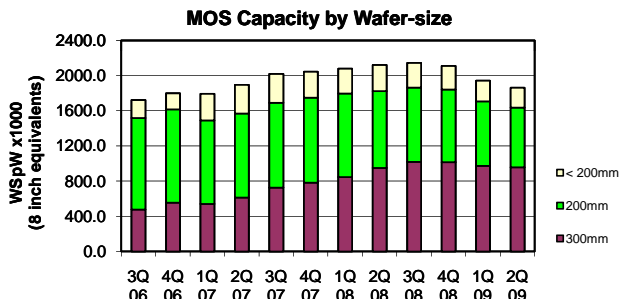
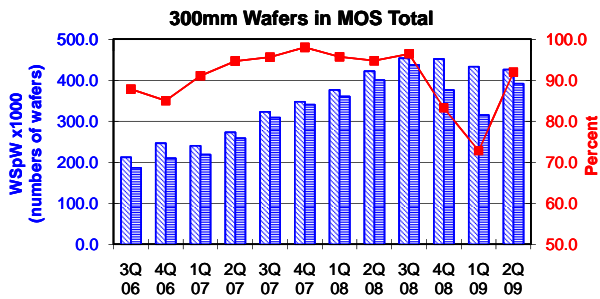
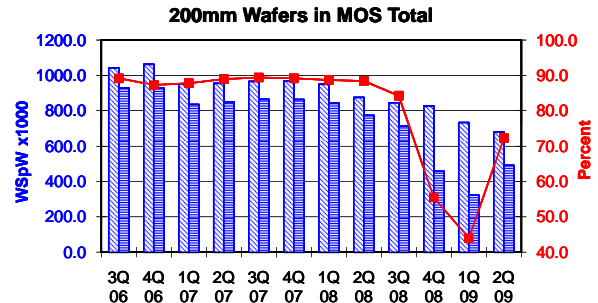
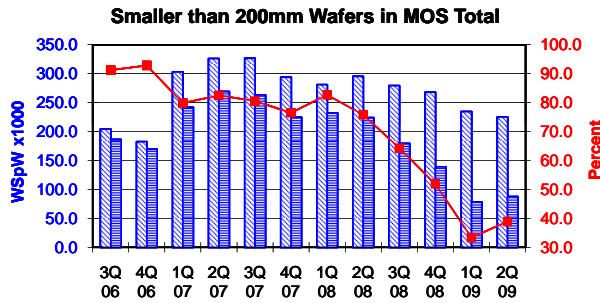
Yellow coloured cells reflect revised inputs Green bordered cells contain changes resulting from revised inputs

These statistics are based on data supplied by merchant SC manufacturers who together represent the great majority of the world's SC production.

All MOS data are expressed in 8 inch equivalent wafers, except for the 300mm wafer data where annotated as "numbers of wafers".

WSpW = Wafer-Starts per Week.

Legends: Capacity WSpW Actual WSpW Utilisation of capacity in percent



			3Q 06	4Q 06	1Q 07	2Q 07	3Q 07	4Q 07	1Q 08	2Q 08	3Q 08	4Q 08	1Q 09	2Q 09
≤ 200mm Wafers in MOS Total	Capacity	Wafer-starts per week x 1000	204.5	182.7	303.3	326.2	326.8	294.2	281.2	295.7	279.4	268.1	234.8	225.3
		% growth re. preceding quarter	-11.3	-10.7	66.0	7.6	0.2	-10.0	-4.4	5.1	-5.5	-4.1	-12.4	-4.1
		% growth re. one year ago	-15.7	-31.1	14.7	4.1	59.8	61.0	-7.3	-9.4	-14.5	-8.9	-16.5	-23.8
	Actual Wafer-Starts	Wafer-starts per week x1000	186.7	169.7	242.3	269.2	263.4	225.1	232.5	224.3	179.7	139.2	78.3	87.6
		% growth re. preceding quarter	-3.4	-9.1	42.7	11.1	-2.2	-14.5	3.3	-3.5	-19.9	-22.5	-43.7	11.9
		% growth re. one year ago	-3.7	-18.4	20.9	39.4	41.1	32.6	-4.0	-16.7	-31.8	-38.1	-66.3	-60.9
	Utilisation	in percent (%)	91.3	92.9	79.9	82.5	80.6	76.5	82.7	75.9	64.3	51.9	33.4	38.9

			3Q 06	4Q 06	1Q 07	2Q 07	3Q 07	4Q 07	1Q 08	2Q 08	3Q 08	4Q 08	1Q 09	2Q 09
200mm wafers in MOS Total	Capacity	Wafer-starts per week x1000	1041.8	1062.7	951.1	955.4	966.2	968.7	950.5	875.2	844.7	826.0	733.5	679.7
		% growth re. preceding quarter	2.0	2.0	-10.5	0.5	1.1	0.3	-1.9	-7.9	-3.5	-2.2	-11.2	-7.3
		% growth re. one year ago	6.2	7.9	-4.7	-6.5	-7.3	-8.8	-0.1	-8.4	-12.6	-14.7	-22.8	-22.3
	Actual Wafer-Starts	Wafer-starts per week x1000	929.1	927.5	835.1	850.0	864.0	863.9	843.1	774.1	711.9	458.1	322.6	491.4
		% growth re. preceding quarter	-0.8	-0.2	-10.0	1.8	1.6	0.0	-2.4	-8.2	-8.0	-35.7	-29.6	52.3
		% growth re. one year ago	2.0	-0.8	-9.0	-9.3	-7.0	-6.9	1.0	-8.9	-17.6	-47.0	-61.7	-36.5
Utilisation	in percent (%)	89.2	87.3	87.8	89.0	89.4	89.2	88.7	88.4	84.3	55.5	44.0	72.3	

			3Q 06	4Q 06	1Q 07	2Q 07	3Q 07	4Q 07	1Q 08	2Q 08	3Q 08	4Q 08	1Q 09	2Q 09
300mm wafers in MOS Total	Capacity	WSpW x 1000 expressed in 8 inch equivalent wafers	477.0	554.4	540.0	613.8	726.1	781.9	847.1	950.0	1020.4	1016.3	973.8	958.1
		WSpW x 1000 expressed in numbers of wafers	212.0	246.4	240.0	272.8	322.7	347.5	376.5	422.2	453.5	451.7	432.8	425.8
		% growth re. preceding quarter	16.9	16.2	-2.6	13.7	18.3	7.7	8.3	12.1	7.4	-0.4	-4.2	-1.6
		% growth re. one year ago	83.9	92.0	54.9	50.4	52.2	41.0	56.9	54.8	40.5	30.0	15.0	0.9
	Actual Wafer-Starts	WSpW x 1000 expressed in 8 inch equivalent wafers	419.0	471.4	491.9	581.2	694.4	766.4	810.9	900.2	983.9	845.8	709.0	880.9
		WSpW x 1000 expressed in numbers of wafers	186.2	209.5	218.6	258.3	308.6	340.6	360.4	400.1	437.3	375.9	315.1	391.5
		% growth re. preceding quarter	6.1	12.5	4.3	18.2	19.5	10.4	5.8	11.0	9.3	-14.0	-16.2	24.2
		% growth re. one year ago	74.2	67.3	46.7	47.2	65.7	62.6	64.9	54.9	41.7	10.4	-12.6	-2.1
	Utilisation	in percent (%)	87.8	85.0	91.1	94.7	95.6	98.0	95.7	94.8	96.4	83.2	72.8	91.9

Yellow coloured cells reflect revised inputs Green bordered cells contain changes resulting from revised inputs

These statistics are based on data supplied by merchant SC manufacturers who together represent the great majority of the world's SC production.