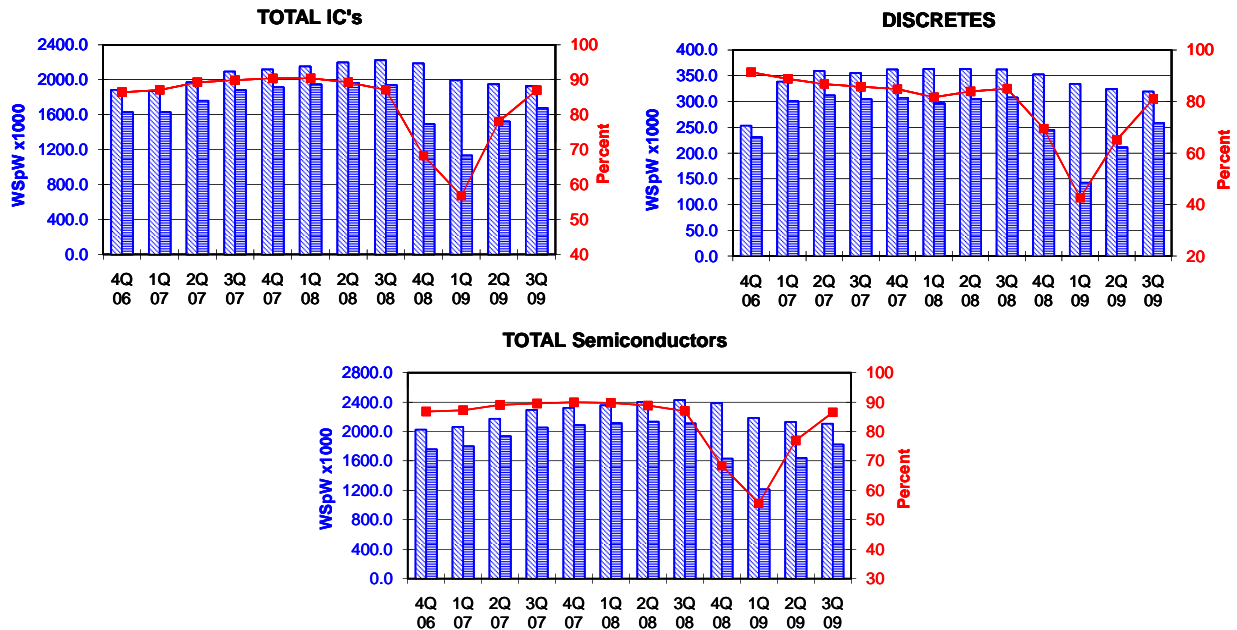


TOTAL IC's and TOTAL Semiconductors data are expressed in 8 inch equivalent wafers. DISCRETES data are expressed in 6 inch equivalent wafers. "TOTAL IC's" include Bipolar data, which were converted for this purpose from 5 inch to 8 inch equivalent wafers by the factor 0.391. "TOTAL Semiconductors" include DISCRETES data, which were converted for this purpose from 6 inch to 8 inch equivalent wafers by the factor 0.563.

WSpW = Wafer-Starts per Week.

Legends : Capacity WSpW Actual WSpW Utilisation of capacity in percent



		4Q 06	1Q 07	2Q 07	3Q 07	4Q 07	1Q 08	2Q 08	3Q 08	4Q 08	1Q 09	2Q 09	3Q 09	
TOTAL IC's	Capacity	Wafer-starts per week x 1000	1883.7	1871.9	1971.6	2092.7	2117.9	2151.9	2197.8	2223.1	2187.2	1995.0	1947.9	1926.9
		% growth re. preceding quarter	4.2	-0.6	5.3	6.1	1.2	1.6	2.1	1.2	-1.6	-8.8	-2.4	-1.1
		% growth re. one year ago	15.2	9.9	13.0	15.7	12.4	15.0	11.5	6.2	3.3	-7.3	-11.4	-13.3
	Actual Wafer-Starts	Wafer-starts per week x 1000	1628.3	1629.9	1760.2	1881.2	1914.5	1946.6	1962.1	1937.0	1493.2	1133.3	1521.1	1676.9
		% growth re. preceding quarter	1.8	0.1	8.0	6.9	1.8	1.7	0.8	-1.3	-22.9	-24.1	34.2	10.2
		% growth re. one year ago	8.5	6.9	10.6	17.6	17.6	19.4	11.5	3.0	-22.0	-41.8	-22.5	-13.4
Utilisation	in percent (%)	86.4	87.1	89.3	89.9	90.4	90.5	89.3	87.1	68.3	56.8	78.1	87.0	

Discrete Semiconductor participation expanded from 1Q-2007

		2Q 07	3Q 07	4Q 07	1Q 08	2Q 08	3Q 08	4Q 08	1Q 09	2Q 09	3Q 09			
DISCRETES (6 inch equivs.)	Capacity	Wafer-starts per week x1000	252.9	338.5	359.3	355.3	362.0	363.0	362.9	362.1	352.4	334.2	324.1	319.1
		% growth re. preceding quarter	4.1	n.a.	6.1	-1.1	1.9	0.3	0.0	-0.2	-2.7	-5.2	-3.0	-1.5
		% growth re. one year ago		n.a.	n.a.	n.a.	n.a.	7.2	1.0	1.9	-2.7	-7.9	-10.7	-11.9
	Actual Wafer-Starts	Wafer-starts per week x1000	231.0	300.6	311.8	304.6	307.1	296.4	304.5	307.8	244.8	142.4	211.1	258.5
		% growth re. preceding quarter	1.0	n.a.	3.7	-2.3	0.8	-3.5	2.7	1.1	-20.5	-41.8	48.2	22.5
		% growth re. one year ago		n.a.	n.a.	n.a.	n.a.	-1.4	-2.3	1.1	-22.3	-52.0	-30.7	-16.0
Utilisation	in percent (%)	91.3	88.8	86.8	85.7	84.8	81.7	83.9	85.0	69.5	42.6	65.1	81.0	

		2Q 07	3Q 07	4Q 07	1Q 08	2Q 08	3Q 08	4Q 08	1Q 09	2Q 09	3Q 09			
TOTAL Semiconductors	Capacity	Wafer-starts per week x1000	2026.1	2062.5	2173.9	2292.8	2321.7	2356.3	2402.1	2427.0	2385.6	2183.2	2130.4	2106.5
		% growth re. preceding quarter	4.2	1.8	5.4	5.5	1.3	1.5	1.9	1.0	-1.7	-8.5	-2.4	-1.1
		% growth re. one year ago		n.a.	n.a.	n.a.	n.a.	14.2	10.5	5.9	2.8	-7.3	-11.3	-13.2
	Actual Wafer-Starts	Wafer-starts per week x1000	1758.4	1799.1	1935.8	2052.7	2087.4	2113.5	2133.6	2110.3	1631.0	1213.5	1639.9	1822.4
		% growth re. preceding quarter	1.7	2.3	7.6	6.0	1.7	1.2	1.0	-1.1	-22.7	-25.6	35.1	11.1
		% growth re. one year ago		n.a.	n.a.	n.a.	n.a.	17.5	10.2	2.8	-21.9	-42.6	-23.1	-13.6
Utilisation	in percent (%)	86.8	87.2	89.0	89.5	89.9	89.7	88.8	87.0	68.4	55.6	77.0	86.5	

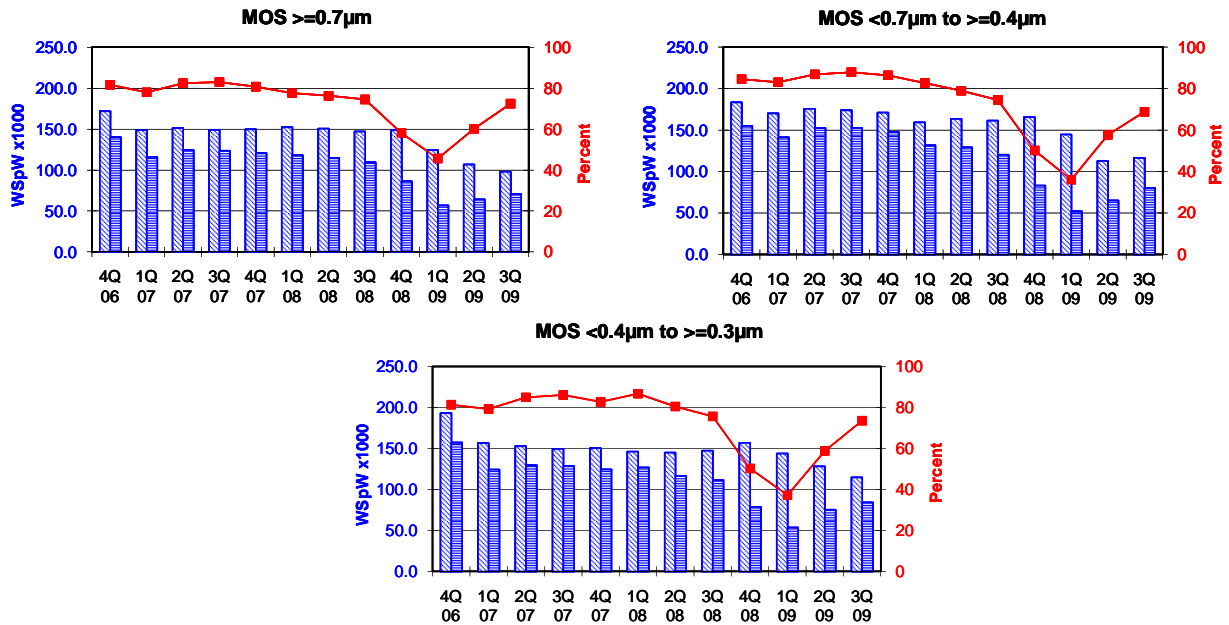
Green bordered cells contain changes resulting from revised inputs

These statistics are based on data supplied by merchant SC manufacturers who together represent the majority of the world's SC production.

All MOS data are expressed in 8 inch equivalent wafers.

WSpW = Wafer-Starts per Week.

Legends : Capacity WSpW Actual WSpW Utilisation of capacity in percent



			4Q 06	1Q 07	2Q 07	3Q 07	4Q 07	1Q 08	2Q 08	3Q 08	4Q 08	1Q 09	2Q 09	3Q 09
MOS $\geq 0.7\mu\text{m}$	Capacity	Wafer-starts per week x1000	171.8	148.8	151.2	148.9	149.8	152.2	150.5	147.0	148.7	124.3	106.7	97.9
		% growth re. preceding quarter	0.5	-13.4	1.6	-1.5	0.6	1.6	-1.1	-2.3	1.2	-16.4	-14.2	-8.2
		% growth re. one year ago	-1.8	-20.0	-15.5	-12.9	-12.8	2.3	-0.5	-1.3	-0.7	-18.3	-29.1	-33.4
	Actual Wafer-Starts	Wafer-starts per week x1000	140.2	116.0	124.6	123.5	120.9	118.0	114.8	109.5	86.3	56.7	64.2	70.9
		% growth re. preceding quarter	-2.4	-17.3	7.4	-0.9	-2.1	-2.4	-2.7	-4.6	-21.2	-34.3	13.2	10.4
		% growth re. one year ago	-7.9	-27.0	-19.1	-14.0	-13.8	1.7	-7.9	-11.3	-28.6	-51.9	-44.1	-35.3
Utilisation	in percent (%)	81.6	78.0	82.4	82.9	80.7	77.5	76.3	74.5	58.0	45.6	60.2	72.4	

			4Q 06	1Q 07	2Q 07	3Q 07	4Q 07	1Q 08	2Q 08	3Q 08	4Q 08	1Q 09	2Q 09	3Q 09
MOS $< 0.7\mu\text{m}$ to $\geq 0.4\mu\text{m}$	Capacity	Wafer-starts per week x1000	183.3	170.0	175.5	173.8	170.9	159.1	163.4	161.2	165.6	144.6	112.7	116.4
		% growth re. preceding quarter	-0.1	-7.3	3.2	-1.0	-1.7	-6.9	2.7	-1.3	2.7	-12.7	-22.1	3.3
		% growth re. one year ago	-2.9	-10.1	-2.0	-5.3	-6.8	-6.4	-6.9	-7.2	-3.1	-9.1	-31.0	-27.8
	Actual Wafer-Starts	Wafer-starts per week x1000	154.9	141.2	152.4	152.7	147.6	131.5	129.0	120.1	83.0	52.1	65.0	80.1
		% growth re. preceding quarter	-2.5	-8.8	7.9	0.2	-3.3	-10.9	-1.9	-6.9	-30.9	-37.2	24.8	23.2
		% growth re. one year ago	-7.1	-8.2	-4.6	-3.8	-4.7	-6.9	-15.4	-21.3	-43.8	-60.4	-49.6	-33.3
Utilisation	in percent (%)	84.5	83.1	86.8	87.9	86.4	82.7	78.9	74.5	50.1	36.0	57.7	68.8	

			4Q 06	1Q 07	2Q 07	3Q 07	4Q 07	1Q 08	2Q 08	3Q 08	4Q 08	1Q 09	2Q 09	3Q 09
MOS $< 0.4\mu\text{m}$ to $\geq 0.3\mu\text{m}$	Capacity	Wafer-starts per week x1000	193.2	156.7	152.7	149.5	150.5	146.2	144.9	147.3	156.9	143.8	128.1	114.6
		% growth re. preceding quarter	2.1	-18.9	-2.6	-2.1	0.7	-2.9	-0.9	1.7	6.5	-8.3	-10.9	-10.5
		% growth re. one year ago	-0.8	-19.4	-21.6	-21.0	-22.1	-6.7	-5.1	-1.5	4.3	-1.6	-11.6	-22.2
	Actual Wafer-Starts	Wafer-starts per week x1000	157.2	124.2	129.7	128.7	124.5	126.8	116.6	111.4	78.8	53.5	75.3	84.3
		% growth re. preceding quarter	-0.3	-21.0	4.4	-0.8	-3.3	1.8	-8.0	-4.5	-29.3	-32.1	40.7	12.0
		% growth re. one year ago	-5.6	-20.6	-19.2	-18.4	-20.8	2.1	-10.1	-13.4	-36.7	-57.8	-35.4	-24.3
Utilisation	in percent (%)	81.4	79.3	84.9	86.1	82.7	86.7	80.5	75.6	50.2	37.2	58.8	73.6	

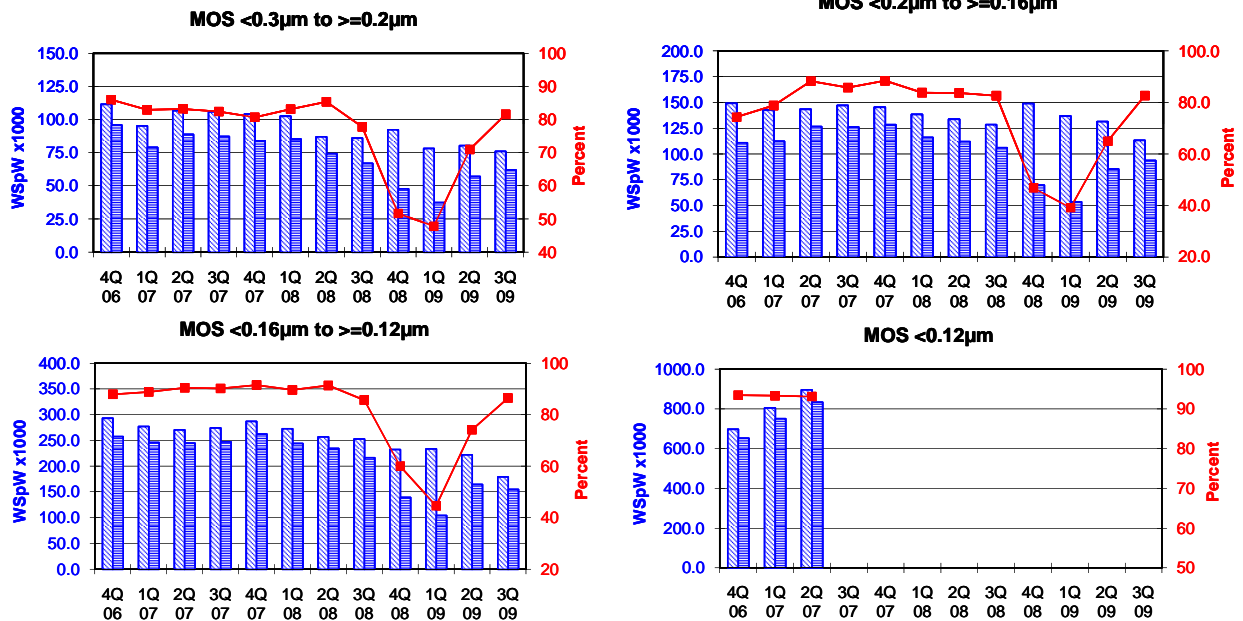
Yellow coloured cells reflect revised inputs Green bordered cells contain changes resulting from revised inputs

These statistics are based on data supplied by merchant SC manufacturers who together represent the majority of the world's SC production.

All MOS data are expressed in 8 inch equivalent wafers.

WSpW = Wafer-Starts per Week.

Legends : Capacity WSpW Actual WSpW Utilisation of capacity in percent



		4Q 06	1Q 07	2Q 07	3Q 07	4Q 07	1Q 08	2Q 08	3Q 08	4Q 08	1Q 09	2Q 09	3Q 09	
MOS <0.3µm to >=0.2µm	Capacity	Wafer-starts per week x1000	111.5	95.2	106.7	105.9	104.1	102.6	87.0	86.0	92.3	78.2	80.3	76.0
		% growth re. preceding quarter	1.0	-14.6	12.1	-0.7	-1.7	-1.4	-15.2	-1.1	7.3	-15.3	2.7	-5.4
		% growth re. one year ago	4.6	-6.9	-0.1	-4.1	-6.6	7.8	-18.5	-18.8	-11.3	-23.8	-7.7	-11.6
	Actual Wafer-Starts	Wafer-starts per week x1000	95.9	79.0	88.8	87.3	84.0	85.3	74.3	66.9	47.7	37.4	57.0	62.0
		% growth re. preceding quarter	-1.7	-17.6	12.4	-1.7	-3.8	1.5	-12.9	-10.0	-28.7	-21.6	52.4	8.8
		% growth re. one year ago	5.6	-15.2	-8.2	-10.6	-12.4	8.0	-16.3	-23.4	-43.2	-56.2	-23.3	-7.3
Utilisation	in percent (%)	86.0	83.0	83.2	82.4	80.7	83.1	85.4	77.8	51.7	47.8	71.0	81.6	

		4Q 06	1Q 07	2Q 07	3Q 07	4Q 07	1Q 08	2Q 08	3Q 08	4Q 08	1Q 09	2Q 09	3Q 09	
MOS <0.2µm to >=0.16µm	Capacity	Wafer-starts per week x1000	149.2	142.5	143.4	147.0	145.3	138.4	133.7	128.4	149.0	136.8	131.4	113.2
		% growth re. preceding quarter	-2.4	-4.5	0.6	2.5	-1.2	-4.7	-3.4	-4.0	16.0	-8.2	-3.9	-13.9
		% growth re. one year ago	-8.2	-12.9	-14.8	-3.9	-2.6	-2.9	-6.8	-12.7	2.5	-1.2	-1.7	-11.8
	Actual Wafer-Starts	Wafer-starts per week x1000	110.9	112.3	126.6	126.1	128.5	116.0	111.9	106.1	69.7	53.5	85.4	93.6
		% growth re. preceding quarter	-10.4	1.3	12.7	-0.4	1.9	-9.7	-3.5	-5.2	-34.3	-23.2	59.6	9.6
		% growth re. one year ago	-25.4	-18.3	-13.2	1.9	15.9	3.3	-11.6	-15.9	-45.8	-53.9	-23.7	-11.8
Utilisation	in percent (%)	74.3	78.8	88.3	85.8	88.4	83.8	83.7	82.6	46.8	39.1	65.0	82.7	

		4Q 06	1Q 07	2Q 07	3Q 07	4Q 07	1Q 08	2Q 08	3Q 08	4Q 08	1Q 09	2Q 09	3Q 09	
MOS <0.16µm to >=0.12µm	Capacity	Wafer-starts per week x 1000	292.9	276.7	270.4	274.0	286.7	272.4	256.6	252.7	232.1	233.5	221.9	179.0
		% growth re. preceding quarter	1.4	-5.5	-2.3	1.3	4.6	-5.0	-5.8	-1.5	-8.2	0.6	-5.0	-19.3
		% growth re. one year ago	2.9	-7.1	-6.9	-5.1	-2.1	-1.6	-5.1	-7.8	-19.0	-14.3	-13.5	-29.2
	Actual Wafer-Starts	Wafer-starts per week x1000	257.4	245.7	244.5	247.0	262.3	244.0	234.3	216.4	139.2	104.1	164.5	154.7
		% growth re. preceding quarter	-1.6	-4.5	-0.5	1.0	6.2	-7.0	-4.0	-7.6	-35.7	-25.2	58.0	-6.0
		% growth re. one year ago	-7.3	-15.5	-13.5	-5.6	1.9	-0.7	-4.2	-12.4	-46.9	-57.3	-29.8	-28.5
Utilisation	in percent (%)	87.9	88.8	90.4	90.1	91.5	89.6	91.3	85.6	60.0	44.6	74.1	86.4	

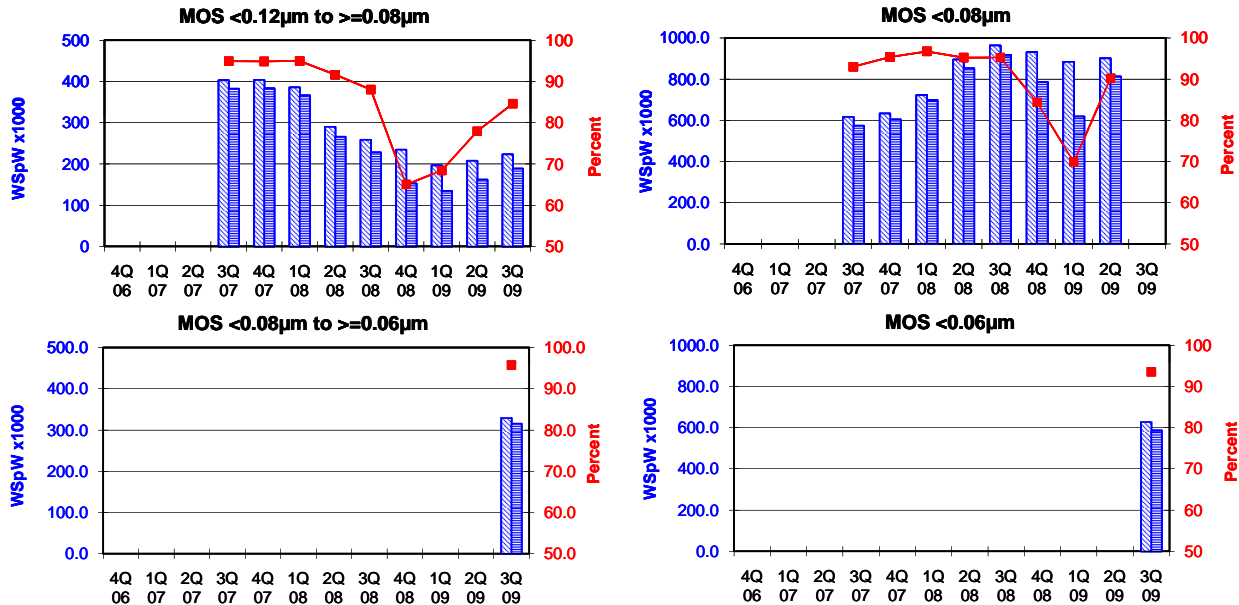
		4Q 06	1Q 07	2Q 07	3Q 07	4Q 07	1Q 08	2Q 08	3Q 08	4Q 08	1Q 09	2Q 09	3Q 09	
MOS <0.12µm	Capacity	Wafer-starts per week x1000	697.9	804.5	895.5									
		% growth re. preceding quarter	11.2	15.3	11.3									
		% growth re. one year ago	63.7	68.3	65.2									
	Actual Wafer-Starts	Wafer-starts per week x1000	652.1	750.8	833.8									
		% growth re. preceding quarter	10.2	15.1	11.1									
		% growth re. one year ago	54.7	62.2	58.8									
Utilisation	in percent (%)	93.4	93.3	93.1										

These statistics are based on data supplied by merchant SC manufacturers who together represent the majority of the world's SC production.

All MOS data are expressed in 8 inch equivalent wafers.

WSpW = Wafer-Starts per Week.

Legends : Capacity WSpW Actual WSpW Utilisation of capacity in percent



		4Q 06	1Q 07	2Q 07	3Q 07	4Q 07	1Q 08	2Q 08	3Q 08	4Q 08	1Q 09	2Q 09	3Q 09	
MOS <0.12µm to ≥0.08µm	Capacity	Wafer-starts per week x1000			403.1	404.1	385.8	290.1	258.8	234.7	196.6	208.0	223.3	
		% growth re. preceding quarter			n.a.	0.2	-4.5	-24.8	-10.8	-9.3	-16.2	5.8	7.4	
		% growth re. one year ago			n.a.	n.a.	n.a.	n.a.	-35.8	-41.9	-49.0	-28.3	-13.7	
	Actual Wafer-Starts	Wafer-starts per week x1000				382.6	383.4	366.4	265.9	227.9	152.6	134.5	162.1	189.0
		% growth re. preceding quarter				n.a.	0.2	-4.4	-27.4	-14.3	-33.0	-11.9	20.5	16.6
		% growth re. one year ago				n.a.	n.a.	n.a.	n.a.	-40.4	-60.2	-63.3	-39.0	-17.1
	Utilisation	in percent (%)				94.9	94.9	95.0	91.7	88.1	65.0	68.4	77.9	84.6

		4Q 06	1Q 07	2Q 07	3Q 07	4Q 07	1Q 08	2Q 08	3Q 08	4Q 08	1Q 09	2Q 09	3Q 09	
MOS <0.08µm	Capacity	Wafer-starts per week x1000			616.9	633.4	722.1	894.6	963.1	931.1	884.3	900.9		
		% growth re. preceding quarter			n.a.	2.7	14.0	23.9	7.7	-3.3	-5.0	1.9		
		% growth re. one year ago			n.a.	n.a.	n.a.	n.a.	56.1	47.0	22.5	0.7		
	Actual Wafer-Starts	Wafer-starts per week x1000				573.8	604.1	698.5	851.8	917.2	785.8	618.1	812.6	
		% growth re. preceding quarter				n.a.	5.3	15.6	21.9	7.7	-14.3	-21.3	31.5	
		% growth re. one year ago				n.a.	n.a.	n.a.	n.a.	59.8	30.1	-11.5	-4.6	
	Utilisation	in percent (%)				93.0	95.4	96.7	95.2	95.2	84.4	69.9	90.2	

		4Q 06	1Q 07	2Q 07	3Q 07	4Q 07	1Q 08	2Q 08	3Q 08	4Q 08	1Q 09	2Q 09	3Q 09	
MOS <0.08µm to ≥0.06µm	Capacity	Wafer-starts per week x1000											329.5	
		% growth re. preceding quarter												
		% growth re. one year ago												
	Actual Wafer-Starts	Wafer-starts per week x1000												315.4
		% growth re. preceding quarter												
		% growth re. one year ago												
	Utilisation	in percent (%)												95.7

		4Q 06	1Q 07	2Q 07	3Q 07	4Q 07	1Q 08	2Q 08	3Q 08	4Q 08	1Q 09	2Q 09	3Q 09	
MOS <0.06µm	Capacity	Wafer-starts per week x1000											627.3	
		% growth re. preceding quarter												
		% growth re. one year ago												
	Actual Wafer-Starts	Wafer-starts per week x1000												586.8
		% growth re. preceding quarter												
		% growth re. one year ago												
	Utilisation	in percent (%)												93.5

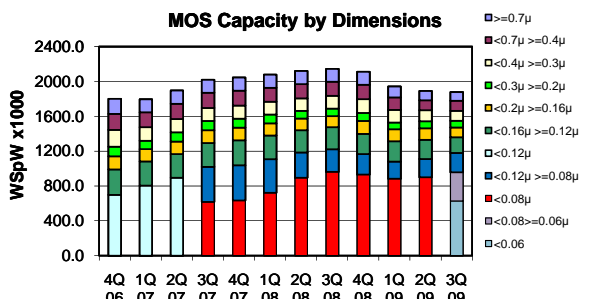
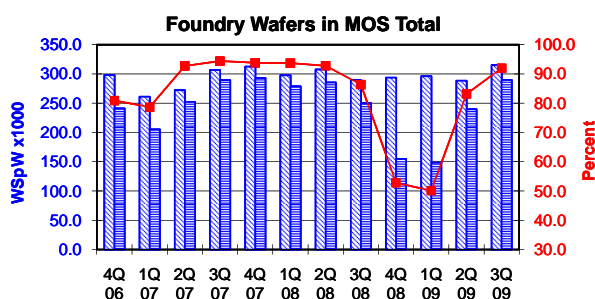
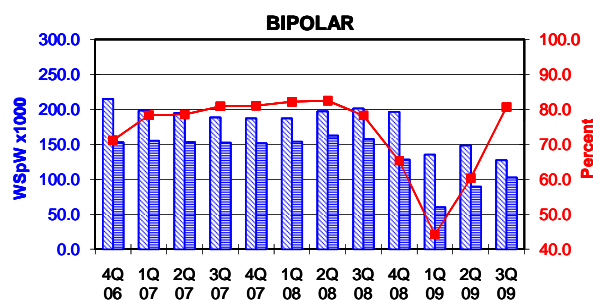
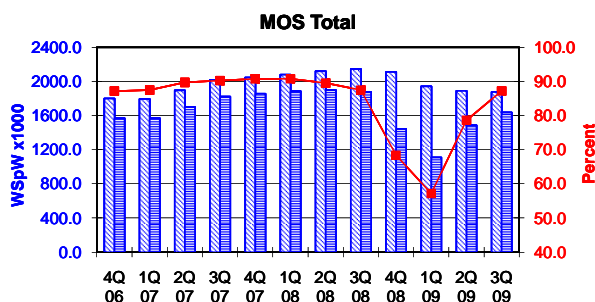
coloured cells reflect revised inputs bordered cells contain changes resulting from revised inputs

These statistics are based on data supplied by merchant SC manufacturers who together represent the majority of the world's SC production.

All MOS data are expressed in 8 inch equivalent wafers. Bipolar data are expressed in 5 inch equivalent wafers.

WSpW = Wafer-Starts per Week.

Legends: Capacity WSpW Actual WSpW Utilisation of capacity in percent



			4Q 06	1Q 07	2Q 07	3Q 07	4Q 07	1Q 08	2Q 08	3Q 08	4Q 08	1Q 09	2Q 09	3Q 09
MOS Total	Capacity	Wafer-starts per week x1000	1799.8	1794.4	1895.4	2019.1	2044.8	2078.8	2120.8	2144.5	2110.4	1942.1	1890.0	1877.2
		% growth re. preceding quarter	4.4	-0.3	5.6	6.5	1.3	1.7	2.0	1.1	-1.6	-8.0	-2.7	-0.7
	Actual Wafer-Starts	Wafer-starts per week x1000	1568.6	1569.2	1700.4	1821.7	1855.3	1886.5	1898.6	1875.5	1443.1	1109.9	1486.1	1636.8
		% growth re. preceding quarter	2.2	0.0	8.4	7.1	1.8	1.7	0.6	-1.2	-23.1	-23.1	33.9	10.1
Utilisation		in percent (%)	87.2	87.4	89.7	90.2	90.7	90.7	89.5	87.5	68.4	57.1	78.6	87.2

			4Q 06	1Q 07	2Q 07	3Q 07	4Q 07	1Q 08	2Q 08	3Q 08	4Q 08	1Q 09	2Q 09	3Q 09
BIPOLAR (5 inch equivs.)	Capacity	Wafer-starts per week x1000	214.7	198.2	194.8	188.3	186.9	187.0	197.0	201.1	196.3	135.3	148.2	127.1
		% growth re. preceding quarter	-0.9	-7.7	-1.7	-3.3	-0.7	0.1	5.3	2.1	-2.4	-31.1	9.5	-14.2
	Actual Wafer-Starts	Wafer-starts per week x1000	152.8	155.2	153.0	152.3	151.5	153.7	162.5	157.4	128.2	59.8	89.4	102.5
		% growth re. preceding quarter	-8.9	1.6	-1.4	-0.5	-0.5	1.5	5.7	-3.1	-18.6	-53.4	49.5	14.7
Utilisation		in percent (%)	71.2	78.3	78.5	80.9	81.1	82.2	82.5	78.3	65.3	44.2	60.3	80.6

			4Q 06	1Q 07	2Q 07	3Q 07	4Q 07	1Q 08	2Q 08	3Q 08	4Q 08	1Q 09	2Q 09	3Q 09
Foundry Wafers in MOS Total	Capacity	Wafer-starts per week x1000	298.1	261.1	272.2	306.6	312.5	297.7	307.5	289.5	293.7	296.1	288.3	315.2
		% growth re. preceding quarter	3.0	-12.4	4.3	12.6	1.9	-4.7	3.3	-5.9	1.5	0.8	-2.6	9.3
	Actual Wafer-Starts	Wafer-starts per week x1000	241.1	205.3	252.4	289.4	293.1	278.9	285.3	250.0	155.0	148.3	239.7	289.8
		% growth re. preceding quarter	-8.9	-14.8	22.9	14.7	1.3	-4.8	2.3	-12.4	-38.0	-4.3	61.6	20.9
Utilisation		in percent (%)	80.9	78.6	92.7	94.4	93.8	93.7	92.8	86.4	52.8	50.1	83.1	91.9

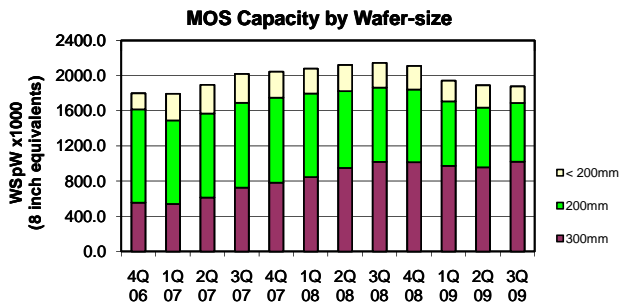
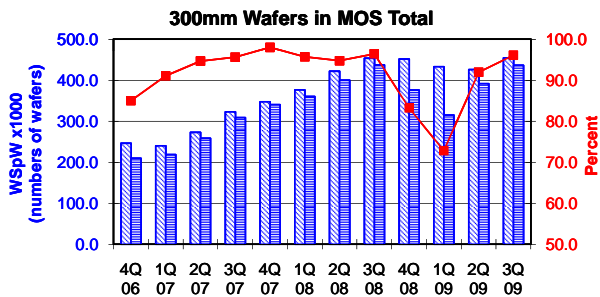
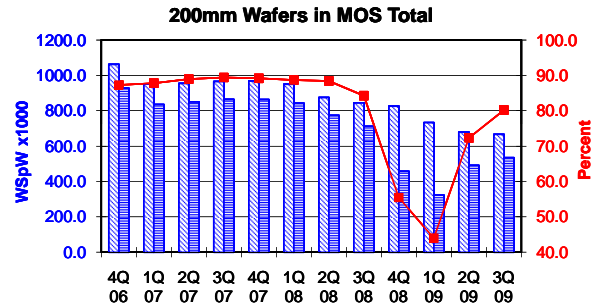
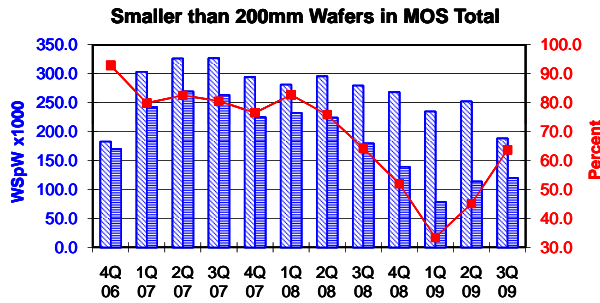
Green bordered cells contain changes resulting from revised inputs

These statistics are based on data supplied by merchant SC manufacturers who together represent the majority of the world's SC production.

All MOS data are expressed in 8 inch equivalent wafers, except for the 300mm wafer data where annotated as "numbers of wafers".

WSpW = Wafer-Starts per Week.

Legends: Capacity WSpW Actual WSpW Utilisation of capacity in percent



		4Q 06	1Q 07	2Q 07	3Q 07	4Q 07	1Q 08	2Q 08	3Q 08	4Q 08	1Q 09	2Q 09	3Q 09	
≤ 200mm Wafers in MOS Total	Capacity	Wafer-starts per week x 1000	182.7	303.3	326.2	326.8	294.2	281.2	295.7	279.4	268.1	234.8	252.3	188.2
		% growth re. preceding quarter	-10.7	66.0	7.6	0.2	-10.0	-4.4	5.1	-5.5	-4.1	-12.4	7.4	-25.4
		% growth re. one year ago	-31.1	14.7	41.4	59.8	61.0	-7.3	-9.4	-14.5	-8.9	-16.5	-14.7	-32.6
	Actual Wafer-Starts	Wafer-starts per week x1000	169.7	242.3	269.2	263.4	225.1	232.5	224.3	179.7	139.2	78.3	113.8	119.9
		% growth re. preceding quarter	-9.1	42.7	11.1	-2.2	-14.5	3.3	-3.5	-19.9	-22.5	-43.7	45.3	5.3
		% growth re. one year ago	-18.4	20.9	39.4	41.1	32.6	-4.0	-16.7	-31.8	-38.1	-66.3	-49.2	-33.3
	Utilisation	in percent (%)	92.9	79.9	82.5	80.6	76.5	82.7	75.9	64.3	51.9	33.4	45.1	63.7

		4Q 06	1Q 07	2Q 07	3Q 07	4Q 07	1Q 08	2Q 08	3Q 08	4Q 08	1Q 09	2Q 09	3Q 09	
200mm wafers in MOS Total	Capacity	Wafer-starts per week x1000	1062.7	951.1	955.4	966.2	968.7	950.5	875.2	844.7	826.0	733.5	679.7	666.8
		% growth re. preceding quarter	2.0	-10.5	0.5	1.1	0.3	-1.9	-7.9	-3.5	-2.2	-11.2	-7.3	-1.9
		% growth re. one year ago	7.9	-4.7	-6.5	-7.3	-8.8	-0.1	-8.4	-12.6	-14.7	-22.8	-22.3	-21.1
	Actual Wafer-Starts	Wafer-starts per week x1000	927.5	835.1	850.0	864.0	863.9	843.1	774.1	711.9	458.1	322.6	491.4	534.8
		% growth re. preceding quarter	-0.2	-10.0	1.8	1.6	0.0	-2.4	-8.2	-8.0	-35.7	-29.6	52.3	8.8
		% growth re. one year ago	-0.8	-9.0	-9.3	-7.0	-6.9	1.0	-8.9	-17.6	-47.0	-61.7	-36.5	-24.9
Utilisation	in percent (%)	87.3	87.8	89.0	89.4	89.2	88.7	88.4	84.3	55.5	44.0	72.3	80.2	

		4Q 06	1Q 07	2Q 07	3Q 07	4Q 07	1Q 08	2Q 08	3Q 08	4Q 08	1Q 09	2Q 09	3Q 09	
300mm wafers in MOS Total	Capacity	WSpW x 1000 expressed in 8 inch equivalent wafers	554.4	540.0	613.8	726.1	781.9	847.1	950.0	1020.4	1016.3	973.8	958.1	1022.2
		WSpW x 1000 expressed in numbers of wafers	246.4	240.0	272.8	322.7	347.5	376.5	422.2	453.5	451.7	432.8	425.8	454.3
		% growth re. preceding quarter	16.2	-2.6	13.7	18.3	7.7	8.3	12.1	7.4	-0.4	-4.2	-1.6	6.7
		% growth re. one year ago	92.0	54.9	50.4	52.2	41.0	56.9	54.8	40.5	30.0	15.0	0.9	0.2
	Actual Wafer-Starts	WSpW x 1000 expressed in 8 inch equivalent wafers	471.4	491.9	581.2	694.4	766.4	810.9	900.2	983.9	845.8	709.0	880.9	982.1
		WSpW x 1000 expressed in numbers of wafers	209.5	218.6	258.3	308.6	340.6	360.4	400.1	437.3	375.9	315.1	391.5	436.5
		% growth re. preceding quarter	12.5	4.3	18.2	19.5	10.4	5.8	11.0	9.3	-14.0	-16.2	24.2	11.5
		% growth re. one year ago	67.3	46.7	47.2	65.7	62.6	64.9	54.9	41.7	10.4	-12.6	-2.1	-0.2
	Utilisation	in percent (%)	85.0	91.1	94.7	95.6	98.0	95.7	94.8	96.4	83.2	72.8	91.9	96.1

Green bordered cells contain changes resulting from revised inputs

These statistics are based on data supplied by merchant SC manufacturers who together represent the majority of the world's SC production.