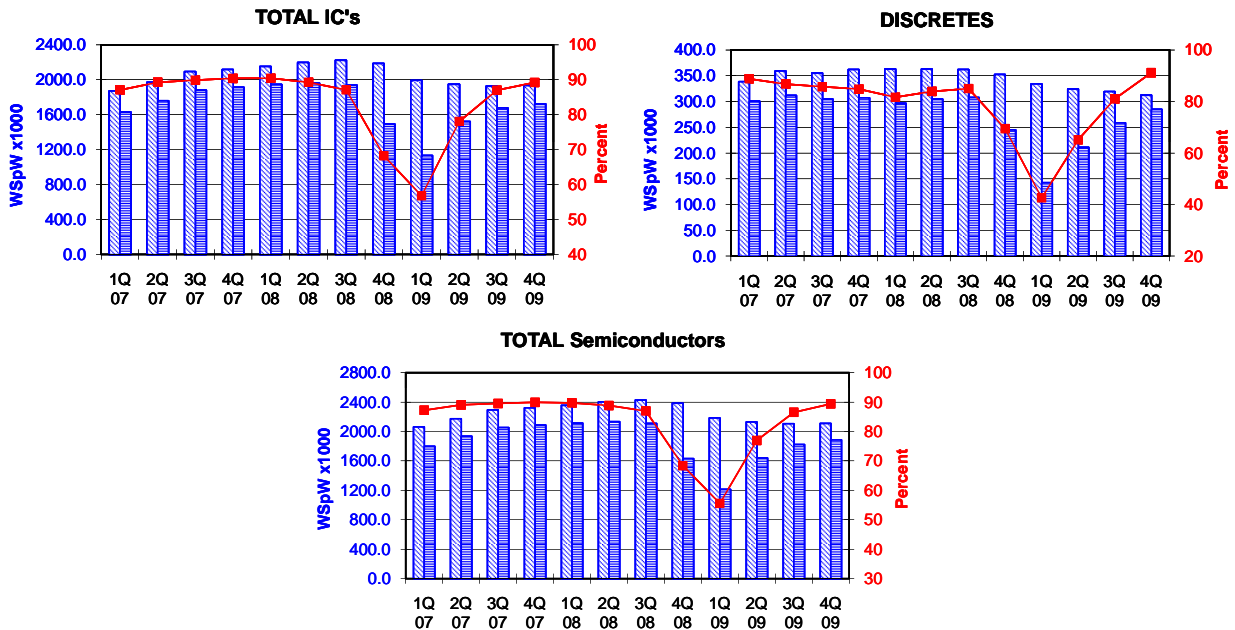


TOTAL IC's and TOTAL Semiconductors data are expressed in 8 inch equivalent wafers. DISCRETES data are expressed in 6 inch equivalent wafers. "TOTAL IC's" include Bipolar data, which were converted for this purpose from 5 inch to 8 inch equivalent wafers by the factor 0.391. "TOTAL Semiconductors" include DISCRETES data, which were converted for this purpose from 6 inch to 8 inch equivalent wafers by the factor 0.563.

WSpW = Wafer-Starts per Week.

Legends : Capacity WSpW Actual WSpW Utilisation of capacity in percent



		1Q 07	2Q 07	3Q 07	4Q 07	1Q 08	2Q 08	3Q 08	4Q 08	1Q 09	2Q 09	3Q 09	4Q 09	
TOTAL IC's	Capacity	Wafer-starts per week x 1000	1871.9	1971.6	2092.7	2117.9	2151.9	2197.8	2223.1	2187.2	1995.0	1947.9	1926.8	1933.2
		% growth re. preceding quarter	-0.6	5.3	6.1	1.2	1.6	2.1	1.2	-1.6	-8.8	-2.4	-1.1	0.3
	Actual Wafer-Starts	Wafer-starts per week x 1000	1629.9	1760.2	1881.2	1914.5	1946.6	1962.1	1937.0	1493.2	1133.3	1521.1	1676.9	1724.8
		% growth re. preceding quarter	0.1	8.0	6.9	1.8	1.7	0.8	-1.3	-22.9	-24.1	34.2	10.2	2.9
	Utilisation	in percent (%)	87.1	89.3	89.9	90.4	90.5	89.3	87.1	68.3	56.8	78.1	87.0	89.2
		% growth re. one year ago	6.9	10.6	17.6	17.6	19.4	11.5	3.0	-22.0	-41.8	-22.5	-13.4	15.5

DISCRETES (6 inch equivs.)	Capacity	Wafer-starts per week x1000	338.5	359.3	355.3	362.0	363.0	362.9	362.1	352.4	334.2	324.1	319.1	312.2
		% growth re. preceding quarter	n.a.	6.1	-1.1	1.9	0.3	0.0	-0.2	-2.7	-5.2	-3.0	-1.5	-2.2
	Actual Wafer-Starts	Wafer-starts per week x1000	300.6	311.8	304.6	307.1	296.4	304.5	307.8	244.8	142.4	211.1	258.5	284.7
		% growth re. preceding quarter	n.a.	3.7	-2.3	0.8	-3.5	2.7	1.1	-20.5	-41.8	48.2	22.5	10.1
	Utilisation	in percent (%)	88.8	86.8	85.7	84.8	81.7	83.9	85.0	69.5	42.6	65.1	81.0	91.2
		% growth re. one year ago	n.a.	n.a.	n.a.	n.a.	-1.4	-2.3	1.1	-20.3	-52.0	-30.7	-16.0	16.3

TOTAL Semiconductors	Capacity	Wafer-starts per week x1000	2062.5	2173.9	2292.8	2321.7	2356.3	2402.1	2427.0	2385.6	2183.2	2130.4	2106.4	2109.0
		% growth re. preceding quarter	1.8	5.4	5.5	1.3	1.5	1.9	1.0	-1.7	-8.5	-2.4	-1.1	0.1
	Actual Wafer-Starts	Wafer-starts per week x1000	1799.1	1935.8	2052.7	2087.4	2113.5	2133.6	2110.3	1631.0	1213.5	1639.9	1822.4	1885.1
		% growth re. preceding quarter	2.3	7.6	6.0	1.7	1.2	1.0	-1.1	-22.7	-25.6	35.1	11.1	3.4
	Utilisation	in percent (%)	87.2	89.0	89.5	89.9	89.7	88.8	87.0	68.4	55.6	77.0	86.5	89.4
		% growth re. one year ago	n.a.	n.a.	n.a.	n.a.	17.5	10.2	2.8	-21.9	-42.6	-23.1	-13.6	15.6

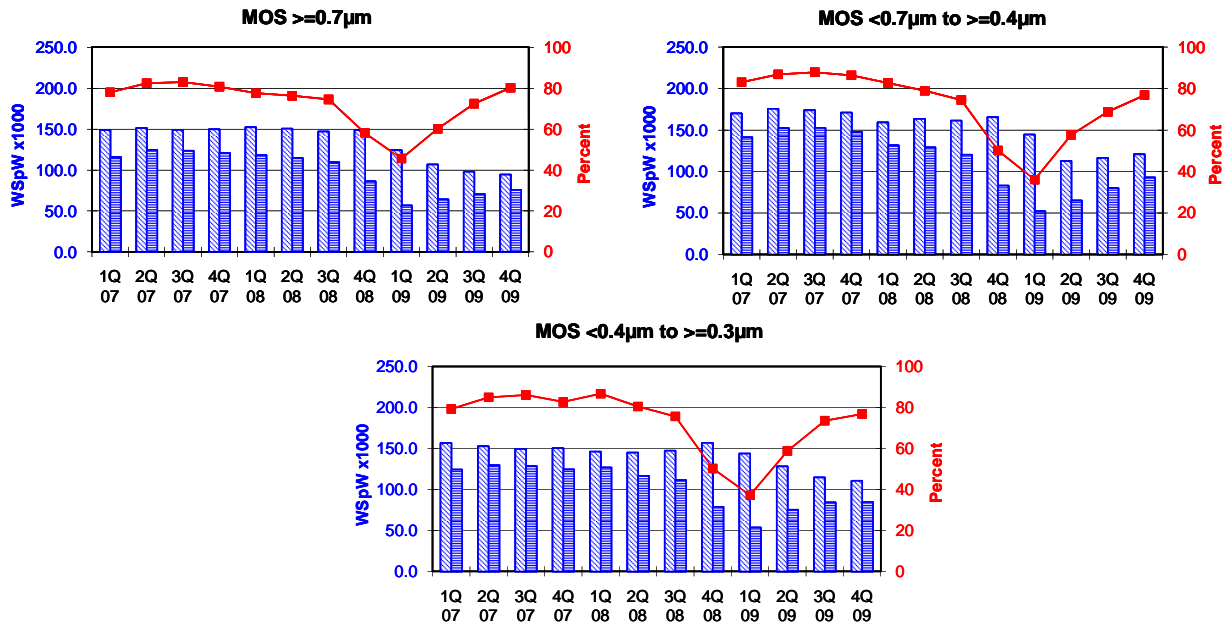
Green bordered cells contain changes resulting from revised inputs

These statistics are based on data supplied by merchant SC manufacturers who together represent the majority of the world's SC production.

All MOS data are expressed in 8 inch equivalent wafers.

WSpW = Wafer-Starts per Week.

Legends : Capacity WSpW Actual WSpW Utilisation of capacity in percent



		1Q 07	2Q 07	3Q 07	4Q 07	1Q 08	2Q 08	3Q 08	4Q 08	1Q 09	2Q 09	3Q 09	4Q 09	
MOS >=0.7µm	Capacity	Wafer-starts per week x1000	148.8	151.2	148.9	149.8	152.2	150.5	147.0	148.7	124.3	106.7	97.9	94.5
		% growth re. preceding quarter	-13.4	1.6	-1.5	0.6	1.6	-1.1	-2.3	1.2	-16.4	-14.2	-8.2	-3.5
		% growth re. one year ago	-20.0	-15.5	-12.9	-12.8	2.3	-0.5	-1.3	-0.7	-18.3	-29.1	-33.4	-36.4
	Actual Wafer-Starts	Wafer-starts per week x1000	116.0	124.6	123.5	120.9	118.0	114.8	109.5	86.3	56.7	64.2	70.9	75.8
		% growth re. preceding quarter	-17.3	7.4	-0.9	-2.1	-2.4	-2.7	-4.6	-21.2	-34.3	13.2	10.4	6.9
		% growth re. one year ago	-27.0	-19.1	-14.0	-13.8	1.7	-7.9	-11.3	-28.6	-51.9	-44.1	-35.3	-12.2
Utilisation	in percent (%)	78.0	82.4	82.9	80.7	77.5	76.3	74.5	58.0	45.6	60.2	72.4	80.2	

		1Q 07	2Q 07	3Q 07	4Q 07	1Q 08	2Q 08	3Q 08	4Q 08	1Q 09	2Q 09	3Q 09	4Q 09	
MOS <0.7µm to >=0.4µm	Capacity	Wafer-starts per week x1000	170.0	175.5	173.8	170.9	159.1	163.4	161.2	165.6	144.6	112.7	116.4	120.8
		% growth re. preceding quarter	-7.3	3.2	-1.0	-1.7	-6.9	2.7	-1.3	2.7	-12.7	-22.1	3.3	3.8
		% growth re. one year ago	-10.1	-2.0	-5.3	-6.8	-6.4	-6.9	-7.2	-3.1	-9.1	-31.0	-27.8	-27.1
	Actual Wafer-Starts	Wafer-starts per week x1000	141.2	152.4	152.7	147.6	131.5	129.0	120.1	83.0	52.1	65.0	80.1	92.8
		% growth re. preceding quarter	-8.8	7.9	0.2	-3.3	-10.9	-1.9	-6.9	-30.9	-37.2	24.8	23.2	15.9
		% growth re. one year ago	-8.2	-4.6	-3.8	-4.7	-6.9	-15.4	-21.3	-43.8	-60.4	-49.6	-33.3	11.8
Utilisation	in percent (%)	83.1	86.8	87.9	86.4	82.7	78.9	74.5	50.1	36.0	57.7	68.8	76.8	

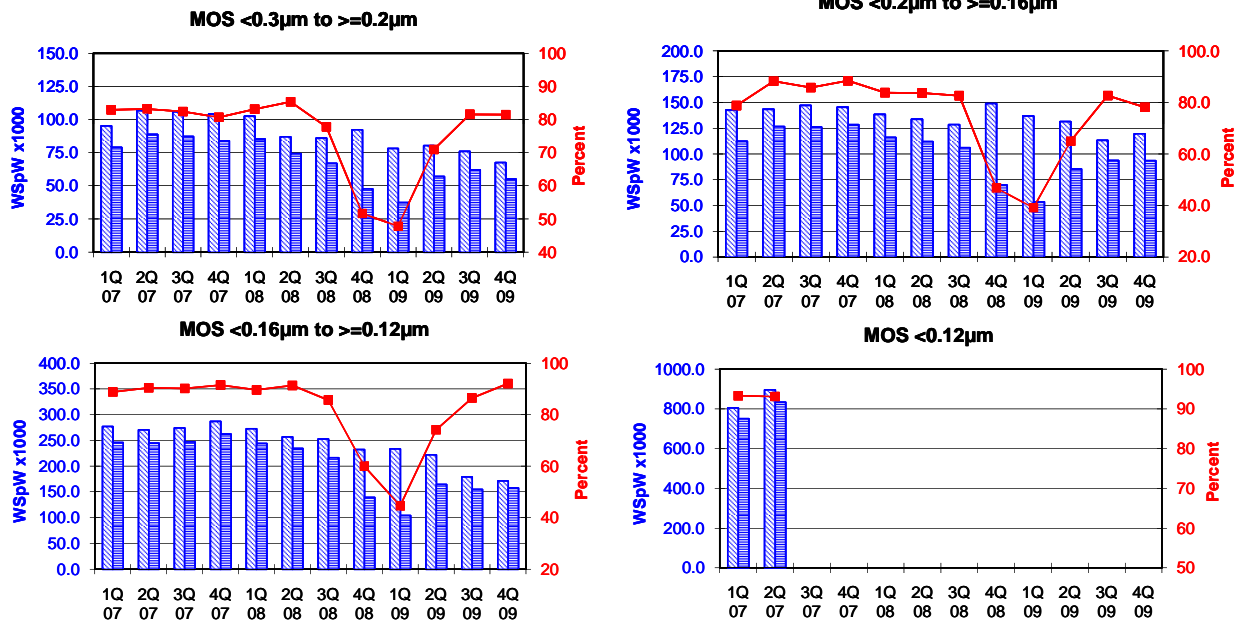
		1Q 07	2Q 07	3Q 07	4Q 07	1Q 08	2Q 08	3Q 08	4Q 08	1Q 09	2Q 09	3Q 09	4Q 09	
MOS <0.4µm to >=0.3µm	Capacity	Wafer-starts per week x1000	156.7	152.7	149.5	150.5	146.2	144.9	147.3	156.9	143.8	128.1	114.6	110.5
		% growth re. preceding quarter	-18.9	-2.6	-2.1	0.7	-2.9	-0.9	1.7	6.5	-8.3	-10.9	-10.5	-3.6
		% growth re. one year ago	-19.4	-21.6	-21.0	-22.1	-6.7	-5.1	-1.5	4.3	-1.6	-11.6	-22.2	-29.6
	Actual Wafer-Starts	Wafer-starts per week x1000	124.2	129.7	128.7	124.5	126.8	116.6	111.4	78.8	53.5	75.3	84.3	84.9
		% growth re. preceding quarter	-21.0	4.4	-0.8	-3.3	1.8	-8.0	-4.5	-29.3	-32.1	40.7	12.0	0.7
		% growth re. one year ago	-20.6	-19.2	-18.4	-20.8	2.1	-10.1	-13.4	-36.7	-57.8	-35.4	-24.3	7.7
Utilisation	in percent (%)	79.3	84.9	86.1	82.7	86.7	80.5	75.6	50.2	37.2	58.8	73.6	76.8	

These statistics are based on data supplied by merchant SC manufacturers who together represent the majority of the world's SC production.

All MOS data are expressed in 8 inch equivalent wafers.

WSpW = Wafer-Starts per Week.

Legends : Capacity WSpW Actual WSpW Utilisation of capacity in percent



		1Q 07	2Q 07	3Q 07	4Q 07	1Q 08	2Q 08	3Q 08	4Q 08	1Q 09	2Q 09	3Q 09	4Q 09	
MOS <0.3µm to >=0.2µm	Capacity	Wafer-starts per week x1000	95.2	106.7	105.9	104.1	102.6	87.0	86.0	92.3	78.2	80.3	76.0	67.6
		% growth re. preceding quarter	-14.6	12.1	-0.7	-1.7	-1.4	-15.2	-1.1	7.3	-15.3	2.7	-5.4	-11.1
		% growth re. one year ago	-6.9	-0.1	-4.1	-6.6	7.8	-18.5	-18.8	-11.3	-23.8	-7.7	-11.6	-26.8
	Actual Wafer-Starts	Wafer-starts per week x1000	79.0	88.8	87.3	84.0	85.3	74.3	66.9	47.7	37.4	57.0	62.0	55.1
		% growth re. preceding quarter	-17.6	12.4	-1.7	-3.8	1.5	-12.9	-10.0	-28.7	-21.6	52.4	8.8	-11.1
		% growth re. one year ago	-15.2	-8.2	-10.6	-12.4	8.0	-16.3	-23.4	-43.2	-56.2	-23.3	-7.3	15.5
Utilisation	in percent (%)	83.0	83.2	82.4	80.7	83.1	85.4	77.8	51.7	47.8	71.0	81.6	81.5	

		1Q 07	2Q 07	3Q 07	4Q 07	1Q 08	2Q 08	3Q 08	4Q 08	1Q 09	2Q 09	3Q 09	4Q 09	
MOS <0.2µm to >=0.16µm	Capacity	Wafer-starts per week x1000	142.5	143.4	147.0	145.3	138.4	133.7	128.4	149.0	136.8	131.4	113.2	119.5
		% growth re. preceding quarter	-4.5	0.6	2.5	-1.2	-4.7	-3.4	-4.0	16.0	-8.2	-3.9	-13.9	5.6
		% growth re. one year ago	-12.9	-14.8	-3.9	-2.6	-2.9	-6.8	-12.7	2.5	-1.2	-1.7	-11.8	-19.8
	Actual Wafer-Starts	Wafer-starts per week x1000	112.3	126.6	126.1	128.5	116.0	111.9	106.1	69.7	53.5	85.4	93.6	93.4
		% growth re. preceding quarter	1.3	12.7	-0.4	1.9	-9.7	-3.5	-5.2	-34.3	-23.2	59.6	9.6	-0.2
		% growth re. one year ago	-18.3	-13.2	1.9	15.9	3.3	-11.6	-15.9	-45.8	-53.9	-23.7	-11.8	34.0
Utilisation	in percent (%)	78.8	88.3	85.8	88.4	83.8	83.7	82.6	46.8	39.1	65.0	82.7	78.2	

		1Q 07	2Q 07	3Q 07	4Q 07	1Q 08	2Q 08	3Q 08	4Q 08	1Q 09	2Q 09	3Q 09	4Q 09	
MOS <0.16µm to >=0.12µm	Capacity	Wafer-starts per week x 1000	276.7	270.4	274.0	286.7	272.4	256.6	252.7	232.1	233.5	221.9	179.0	171.3
		% growth re. preceding quarter	-5.5	-2.3	1.3	4.6	-5.0	-5.8	-1.5	-8.2	0.6	-5.0	-19.3	-4.3
		% growth re. one year ago	-7.1	-6.9	-5.1	-2.1	-1.6	-5.1	-7.8	-19.0	-14.3	-13.5	-29.2	-26.2
	Actual Wafer-Starts	Wafer-starts per week x1000	245.7	244.5	247.0	262.3	244.0	234.3	216.4	139.2	104.1	164.5	154.7	157.7
		% growth re. preceding quarter	-4.5	-0.5	1.0	6.2	-7.0	-4.0	-7.6	-35.7	-25.2	58.0	-6.0	1.9
		% growth re. one year ago	-15.5	-13.5	-5.6	1.9	-0.7	-4.2	-12.4	-46.9	-57.3	-29.8	-28.5	13.3
Utilisation	in percent (%)	88.8	90.4	90.1	91.5	89.6	91.3	85.6	60.0	44.6	74.1	86.4	92.1	

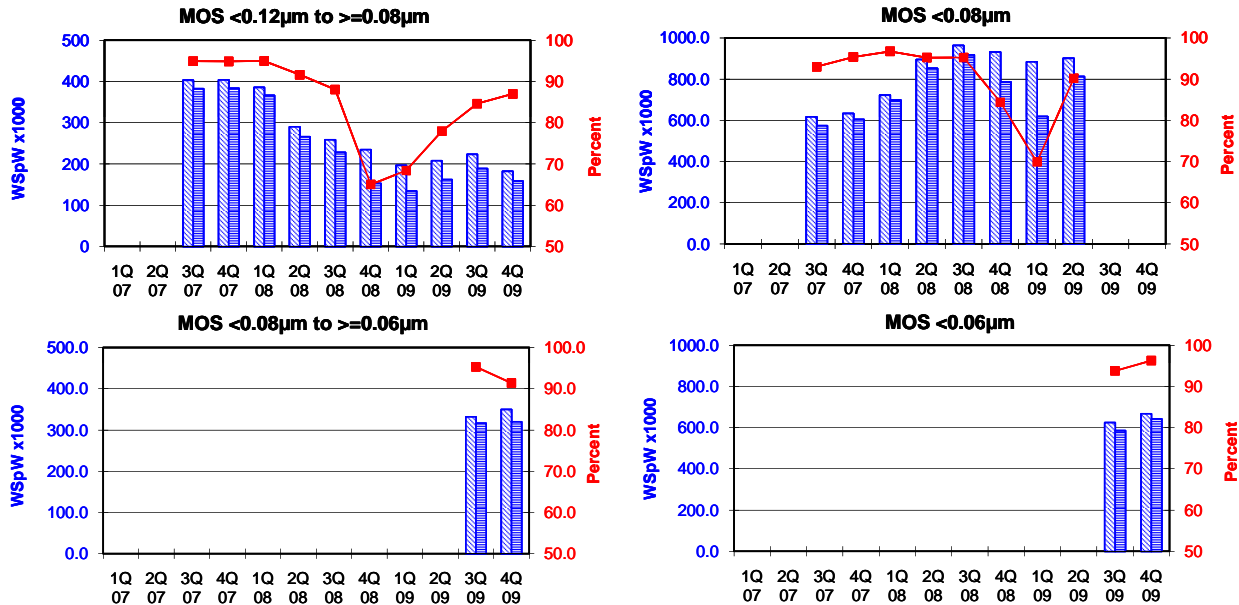
		1Q 07	2Q 07	3Q 07	4Q 07	1Q 08	2Q 08	3Q 08	4Q 08	1Q 09	2Q 09	3Q 09	4Q 09	
MOS <0.12µm	Capacity	Wafer-starts per week x1000	804.5	895.5										
		% growth re. preceding quarter	15.3	11.3										
		% growth re. one year ago	68.3	65.2										
	Actual Wafer-Starts	Wafer-starts per week x1000	750.8	833.8										
		% growth re. preceding quarter	15.1	11.1										
		% growth re. one year ago	62.2	58.8										
Utilisation	in percent (%)	93.3	93.1											

These statistics are based on data supplied by merchant SC manufacturers who together represent the majority of the world's SC production.

All MOS data are expressed in 8 inch equivalent wafers.

WSpW = Wafer-Starts per Week.

Legends : Capacity WSpW Actual WSpW Utilisation of capacity in percent



		1Q 07	2Q 07	3Q 07	4Q 07	1Q 08	2Q 08	3Q 08	4Q 08	1Q 09	2Q 09	3Q 09	4Q 09	
MOS <0.12µm to ≥0.08µm	Capacity	Wafer-starts per week x1000			403.1	404.1	385.8	290.1	258.8	234.7	196.6	208.0	182.3	
		% growth re. preceding quarter			n.a.	0.2	-4.5	-24.8	-10.8	-9.3	-16.2	5.8	7.4	-18.4
		% growth re. one year ago			n.a.	n.a.	n.a.	n.a.	-35.8	-41.9	-49.0	-28.3	-13.7	-22.3
	Actual Wafer-Starts	Wafer-starts per week x1000			382.6	383.4	366.4	265.9	227.9	152.6	134.5	162.1	189.0	158.6
		% growth re. preceding quarter			n.a.	0.2	-4.4	-27.4	-14.3	-33.0	-11.9	20.5	16.6	-16.1
		% growth re. one year ago			n.a.	n.a.	n.a.	n.a.	-40.4	-60.2	-63.3	-39.0	-17.1	3.9
Utilisation	in percent (%)			94.9	94.9	95.0	91.7	88.1	65.0	68.4	77.9	84.6	87.0	

MOS <0.08µm	Capacity	Wafer-starts per week x1000			616.9	633.4	722.1	894.6	963.1	931.1	884.3	900.9	
		% growth re. preceding quarter			n.a.	2.7	14.0	23.9	7.7	-3.3	-5.0	1.9	
		% growth re. one year ago			n.a.	n.a.	n.a.	n.a.	56.1	47.0	22.5	0.7	
	Actual Wafer-Starts	Wafer-starts per week x1000			573.8	604.1	698.5	851.8	917.2	785.8	618.1	812.6	
		% growth re. preceding quarter			n.a.	5.3	15.6	21.9	7.7	-14.3	-21.3	31.5	
		% growth re. one year ago			n.a.	n.a.	n.a.	n.a.	59.8	30.1	-11.5	-4.6	
Utilisation	in percent (%)			93.0	95.4	96.7	95.2	95.2	84.4	69.9	90.2		

MOS <0.08µm to ≥0.06µm	Capacity	Wafer-starts per week x1000										332.1	350.1	
		% growth re. preceding quarter												5.4
		% growth re. one year ago												n.a.
	Actual Wafer-Starts	Wafer-starts per week x1000											316.5	320.0
		% growth re. preceding quarter												1.1
		% growth re. one year ago												n.a.
Utilisation	in percent (%)										95.3	91.4		

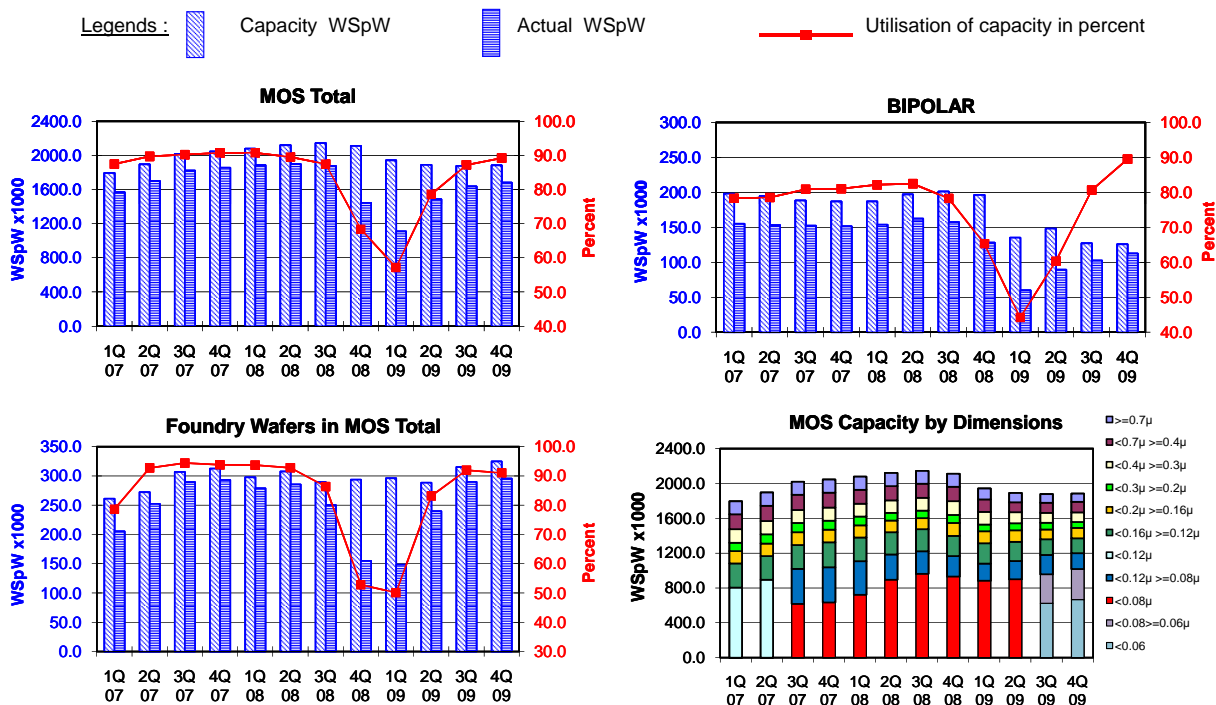
MOS <0.06µm	Capacity	Wafer-starts per week x1000										624.6	667.4	
		% growth re. preceding quarter												6.9
		% growth re. one year ago												n.a.
	Actual Wafer-Starts	Wafer-starts per week x1000											585.7	642.5
		% growth re. preceding quarter												9.7
		% growth re. one year ago												n.a.
Utilisation	in percent (%)										93.8	96.3		

Yellow coloured cells reflect revised inputs Green bordered cells contain changes resulting from revised inputs

These statistics are based on data supplied by merchant SC manufacturers who together represent the majority of the world's SC production.

All MOS data are expressed in 8 inch equivalent wafers. Bipolar data are expressed in 5 inch equivalent wafers.

WSPw = Wafer-Starts per Week.



			1Q 07	2Q 07	3Q 07	4Q 07	1Q 08	2Q 08	3Q 08	4Q 08	1Q 09	2Q 09	3Q 09	4Q 09
MOS Total	Capacity	Wafer-starts per week x 1000	1794.4	1895.4	2019.1	2044.8	2078.8	2120.8	2144.5	2110.4	1942.1	1890.0	1877.1	1884.0
		% growth re. preceding quarter	-0.3	5.6	6.5	1.3	1.7	2.0	1.1	-1.6	-8.0	-2.7	-0.7	0.4
	Actual Wafer-Starts	Wafer-starts per week x1000	1569.2	1700.4	1821.7	1855.3	1886.5	1898.6	1875.5	1443.1	1109.9	1486.1	1636.8	1680.8
		% growth re. preceding quarter	0.0	8.4	7.1	1.8	1.7	0.6	-1.2	-23.1	-23.1	33.9	10.1	2.7
Utilisation		in percent (%)	87.4	89.7	90.2	90.7	90.7	89.5	87.5	68.4	57.1	78.6	87.2	89.2
BIPOLAR (5 inch equivs.)	Capacity	Wafer-starts per week x1000	198.2	194.8	188.3	186.9	187.0	197.0	201.1	196.3	135.3	148.2	127.1	125.8
		% growth re. preceding quarter	-7.7	-1.7	-3.3	-0.7	0.1	5.3	2.1	-2.4	-31.1	9.5	-14.2	-1.0
	Actual Wafer-Starts	Wafer-starts per week x1000	155.2	153.0	152.3	151.5	153.7	162.5	157.4	128.2	59.8	89.4	102.5	112.6
		% growth re. preceding quarter	1.6	-1.4	-0.5	-0.5	1.5	5.7	-3.1	-18.6	-53.4	49.5	14.7	9.9
Utilisation		in percent (%)	78.3	78.5	80.9	81.1	82.2	82.5	78.3	65.3	44.2	60.3	80.6	89.5
Foundry Wafers in MOS Total	Capacity	Wafer-starts per week x1000	261.1	272.2	306.6	312.5	297.7	307.5	289.5	293.7	296.1	288.3	315.2	324.8
		% growth re. preceding quarter	-12.4	4.3	12.6	1.9	-4.7	3.3	-5.9	1.5	0.8	-2.6	9.3	3.0
	Actual Wafer-Starts	Wafer-starts per week x1000	205.3	252.4	289.4	293.1	278.9	285.3	250.0	155.0	148.3	239.7	289.8	295.6
		% growth re. preceding quarter	-14.8	22.9	14.7	1.3	-4.8	2.3	-12.4	-38.0	-4.3	61.6	20.9	2.0
Utilisation		in percent (%)	78.6	92.7	94.4	93.8	93.7	92.8	86.4	52.8	50.1	83.1	91.9	91.0

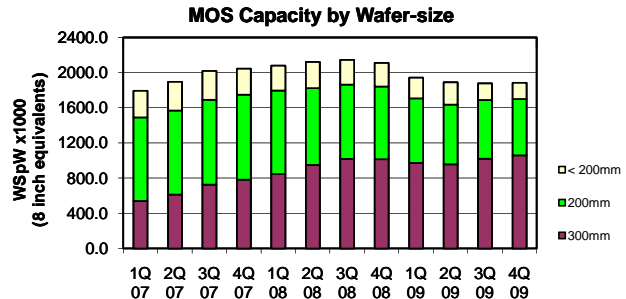
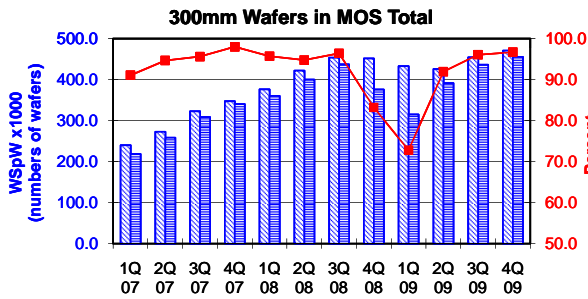
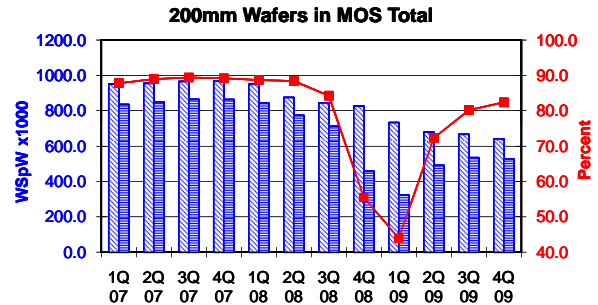
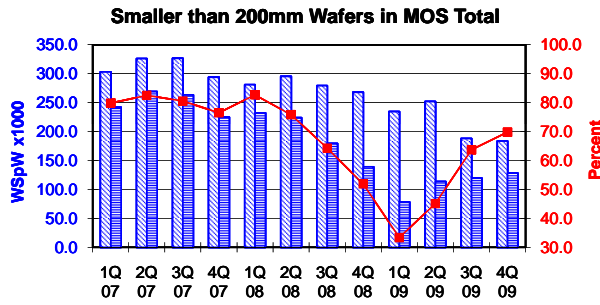
Green bordered cells contain changes resulting from revised inputs

These statistics are based on data supplied by merchant SC manufacturers who together represent the majority of the world's SC production.

All MOS data are expressed in 8 inch equivalent wafers, except for the 300mm wafer data where annotated as "numbers of wafers".

WSpW = Wafer-Starts per Week.

Legends: Capacity WSpW Actual WSpW Utilisation of capacity in percent



			1Q 07	2Q 07	3Q 07	4Q 07	1Q 08	2Q 08	3Q 08	4Q 08	1Q 09	2Q 09	3Q 09	4Q 09
< 200mm Wafers in MOS Total	Capacity	Wafer-starts per week x 1000	303.3	326.2	326.8	294.2	281.2	295.7	279.4	268.1	234.8	252.3	188.1	183.9
		% growth re. preceding quarter	66.0	7.6	0.2	-10.0	-4.4	5.1	-5.5	-4.1	-12.4	7.4	-25.4	-2.3
		% growth re. one year ago	14.7	41.4	59.8	61.0	-7.3	-9.4	-14.5	-8.9	-16.5	-14.7	-32.7	-31.4
	Actual Wafer-Starts	Wafer-starts per week x1000	242.3	269.2	263.4	225.1	232.5	224.3	179.7	139.2	78.3	113.8	119.9	128.3
		% growth re. preceding quarter	42.7	11.1	-2.2	-14.5	3.3	-3.5	-19.9	-22.5	-43.7	45.3	5.3	7.0
		% growth re. one year ago	20.9	39.4	41.1	32.6	-4.0	-16.7	-31.8	-38.1	-66.3	-49.2	-33.3	-7.8
Utilisation	in percent (%)	79.9	82.5	80.6	76.5	82.7	75.9	64.3	51.9	33.4	45.1	63.7	69.8	

			1Q 07	2Q 07	3Q 07	4Q 07	1Q 08	2Q 08	3Q 08	4Q 08	1Q 09	2Q 09	3Q 09	4Q 09
200mm wafers in MOS Total	Capacity	Wafer-starts per week x1000	951.1	955.4	966.2	968.7	950.5	875.2	844.7	826.0	733.5	679.7	666.8	640.4
		% growth re. preceding quarter	-10.5	0.5	1.1	0.3	-1.9	-7.9	-3.5	-2.2	-11.2	-7.3	-1.9	-4.0
		% growth re. one year ago	-4.7	-6.5	-7.3	-8.8	-0.1	-8.4	-12.6	-14.7	-22.8	-22.3	-21.1	-22.5
	Actual Wafer-Starts	Wafer-starts per week x1000	835.1	850.0	864.0	863.9	843.1	774.1	711.9	458.1	322.6	491.4	534.8	527.6
		% growth re. preceding quarter	-10.0	1.8	1.6	0.0	-2.4	-8.2	-8.0	-35.7	-29.6	52.3	8.8	-1.3
		% growth re. one year ago	-9.0	-9.3	-7.0	-6.9	1.0	-8.9	-17.6	-47.0	-61.7	-36.5	-24.9	15.2
Utilisation	in percent (%)	87.8	89.0	89.4	89.2	88.7	88.4	84.3	55.5	44.0	72.3	80.2	82.4	

			1Q 07	2Q 07	3Q 07	4Q 07	1Q 08	2Q 08	3Q 08	4Q 08	1Q 09	2Q 09	3Q 09	4Q 09
300mm wafers in MOS Total	Capacity	WSpW x 1000 expressed in 8 inch equivalent wafers	540.0	613.8	726.1	781.9	847.1	950.0	1020.4	1016.3	973.8	958.1	1022.2	1059.8
		WSpW x 1000 expressed in numbers of wafers	240.0	272.8	322.7	347.5	376.5	422.2	453.5	451.7	432.8	425.8	454.3	471.0
		% growth re. preceding quarter	-2.6	13.7	18.3	7.7	8.3	12.1	7.4	-0.4	-4.2	-1.6	6.7	3.7
		% growth re. one year ago	54.9	50.4	52.2	41.0	56.9	54.8	40.5	30.0	15.0	0.9	0.2	4.3
	Actual Wafer-Starts	WSpW x 1000 expressed in 8 inch equivalent wafers	491.9	581.2	694.4	766.4	810.9	900.2	983.9	845.8	709.0	880.9	982.1	1024.9
		WSpW x 1000 expressed in numbers of wafers	218.6	258.3	308.6	340.6	360.4	400.1	437.3	375.9	315.1	391.5	436.5	455.5
		% growth re. preceding quarter	4.3	18.2	19.5	10.4	5.8	11.0	9.3	-14.0	-16.2	24.2	11.5	4.4
		% growth re. one year ago	46.7	47.2	65.7	62.6	64.9	54.9	41.7	10.4	-12.6	-2.1	-0.2	21.2
	Utilisation	in percent (%)	91.1	94.7	95.6	98.0	95.7	94.8	96.4	83.2	72.8	91.9	96.1	96.7

Green bordered cells contain changes resulting from revised inputs

These statistics are based on data supplied by merchant SC manufacturers who together represent the majority of the world's SC production.