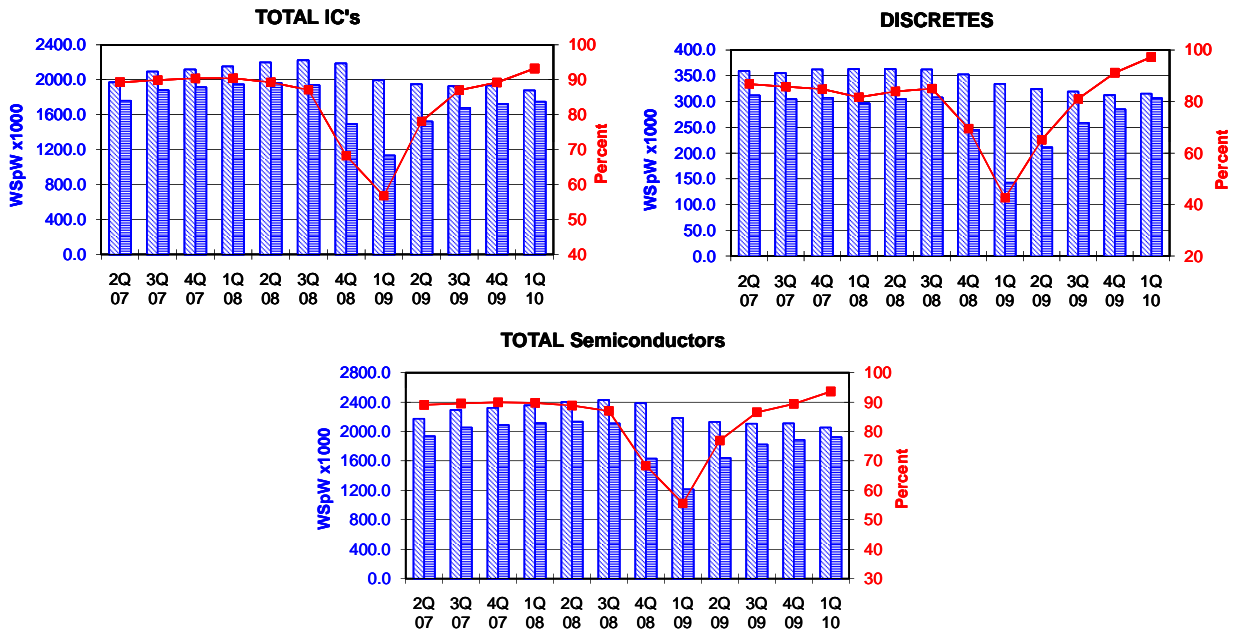


TOTAL IC's and TOTAL Semiconductors data are expressed in 8 inch equivalent wafers. DISCRETES data are expressed in 6 inch equivalent wafers. "TOTAL IC's" include Bipolar data, which were converted for this purpose from 5 inch to 8 inch equivalent wafers by the factor 0.391. "TOTAL Semiconductors" include DISCRETES data, which were converted for this purpose from 6 inch to 8 inch equivalent wafers by the factor 0.563.

WSpW = Wafer-Starts per Week.

Legends : Capacity WSpW Actual WSpW Utilisation of capacity in percent



			2Q 07	3Q 07	4Q 07	1Q 08	2Q 08	3Q 08	4Q 08	1Q 09	2Q 09	3Q 09	4Q 09	1Q 10
TOTAL IC's	Capacity	Wafer-starts per week x 1000	1971.6	2092.7	2117.9	2151.9	2197.8	2223.1	2187.2	1995.0	1947.9	1926.8	1933.2	1876.4
		% growth re. preceding quarter	5.3	6.1	1.2	1.6	2.1	1.2	-1.6	-8.8	-2.4	-1.1	0.3	-2.9
		% growth re. one year ago	13.0	15.7	12.4	15.0	11.5	6.2	3.3	-7.3	-11.4	-13.3	-11.6	-5.9
	Actual Wafer-Starts	Wafer-starts per week x 1000	1760.2	1881.2	1914.5	1946.6	1962.1	1937.0	1493.2	1133.3	1521.1	1676.9	1724.8	1749.4
		% growth re. preceding quarter	8.0	6.9	1.8	1.7	0.8	-1.3	-22.9	-24.1	34.2	10.2	2.9	1.4
		% growth re. one year ago	10.6	17.6	17.6	19.4	11.5	3.0	-22.0	-41.8	-22.5	-13.4	15.5	54.4
Utilisation	in percent (%)	89.3	89.9	90.4	90.5	89.3	87.1	68.3	56.8	78.1	87.0	89.2	93.2	

			2Q 07	3Q 07	4Q 07	1Q 08	2Q 08	3Q 08	4Q 08	1Q 09	2Q 09	3Q 09	4Q 09	1Q 10
DISCRETES (6 inch equivs.)	Capacity	Wafer-starts per week x1000	359.3	355.3	362.0	363.0	362.9	362.1	352.4	334.2	324.1	319.1	312.2	315.1
		% growth re. preceding quarter	6.1	-1.1	1.9	0.3	0.0	-0.2	-2.7	-5.2	-3.0	-1.5	-2.2	0.9
		% growth re. one year ago	n.a.	n.a.	n.a.	7.2	1.0	1.9	-2.7	-7.9	-10.7	-11.9	-11.4	-5.7
	Actual Wafer-Starts	Wafer-starts per week x1000	311.8	304.6	307.1	296.4	304.5	307.8	244.8	142.4	211.1	258.5	284.7	306.5
		% growth re. preceding quarter	3.7	-2.3	0.8	-3.5	2.7	1.1	-20.5	-41.8	48.2	22.5	10.1	7.7
		% growth re. one year ago	n.a.	n.a.	n.a.	-1.4	-2.3	1.1	-20.3	-52.0	-30.7	-16.0	16.3	115.2
Utilisation	in percent (%)	86.8	85.7	84.8	81.7	83.9	85.0	69.5	42.6	65.1	81.0	91.2	97.3	

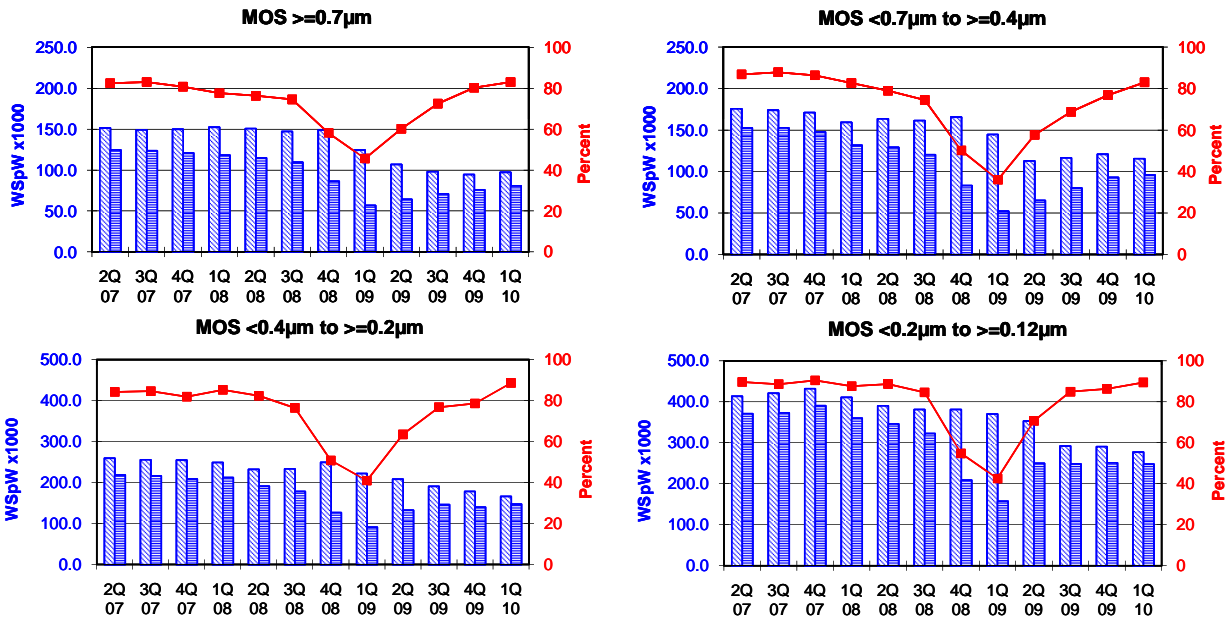
			2Q 07	3Q 07	4Q 07	1Q 08	2Q 08	3Q 08	4Q 08	1Q 09	2Q 09	3Q 09	4Q 09	1Q 10
TOTAL Semiconductors	Capacity	Wafer-starts per week x1000	2173.9	2292.8	2321.7	2356.3	2402.1	2427.0	2385.6	2183.2	2130.4	2106.4	2109.0	2053.8
		% growth re. preceding quarter	5.4	5.5	1.3	1.5	1.9	1.0	-1.7	-8.5	-2.4	-1.1	0.1	-2.6
		% growth re. one year ago	n.a.	n.a.	n.a.	14.2	10.5	5.9	2.8	-7.3	-11.3	-13.2	-11.6	-5.9
	Actual Wafer-Starts	Wafer-starts per week x1000	1935.8	2052.7	2087.4	2113.5	2133.6	2110.3	1631.0	1213.5	1639.9	1822.4	1885.1	1922.0
		% growth re. preceding quarter	7.6	6.0	1.7	1.2	1.0	-1.1	-22.7	-25.6	35.1	11.1	3.4	2.0
		% growth re. one year ago	n.a.	n.a.	n.a.	17.5	10.2	2.8	-21.9	-42.6	-23.1	-13.6	15.6	58.4
Utilisation	in percent (%)	89.0	89.5	89.9	89.7	88.8	87.0	68.4	55.6	77.0	86.5	89.4	93.6	

These statistics are based on data supplied by merchant SC manufacturers who together represent the majority of the world's SC production.

All MOS data are expressed in 8 inch equivalent wafers.

WSpW = Wafer-Starts per Week.

Legends : Capacity WSpW Actual WSpW Utilisation of capacity in percent



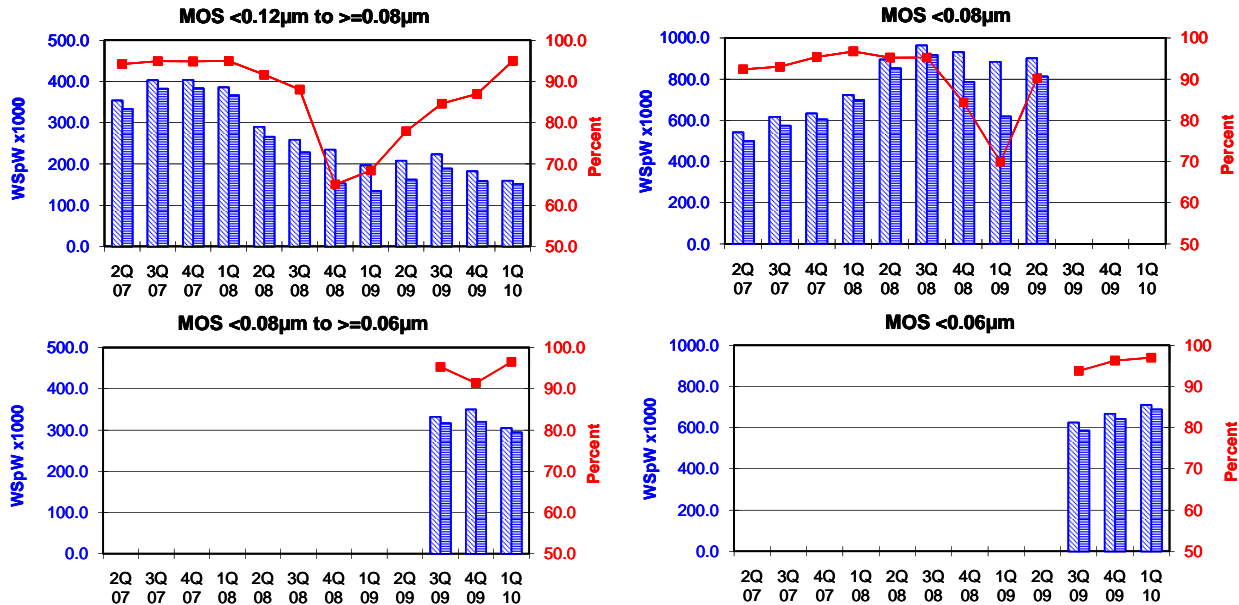
			2Q 07	3Q 07	4Q 07	1Q 08	2Q 08	3Q 08	4Q 08	1Q 09	2Q 09	3Q 09	4Q 09	1Q 10
MOS $\geq 0.7\mu\text{m}$	Capacity	Wafer-starts per week x1000	151.2	148.9	149.8	152.2	150.5	147.0	148.7	124.3	106.7	97.9	94.5	97.2
		% growth re. preceding quarter	1.6	-1.5	0.6	1.6	-1.1	-2.3	1.2	-16.4	-14.2	-8.2	-3.5	2.9
		% growth re. one year ago	-15.5	-12.9	-12.8	2.3	-0.5	-1.3	-0.7	-18.3	-29.1	-33.4	-36.4	-21.8
	Actual Wafer-Starts	Wafer-starts per week x1000	124.6	123.5	120.9	118.0	114.8	109.5	86.3	56.7	64.2	70.9	75.8	80.6
		% growth re. preceding quarter	7.4	-0.9	-2.1	-2.4	-2.7	-4.6	-21.2	-34.3	13.2	10.4	6.9	6.3
		% growth re. one year ago	-19.1	-14.0	-13.8	1.7	-7.9	-11.3	-28.6	-51.9	-44.1	-35.3	-12.2	42.2
Utilisation	in percent (%)	82.4	82.9	80.7	77.5	76.3	74.5	58.0	45.6	60.2	72.4	80.2	82.9	
MOS $< 0.7\mu\text{m}$ to $\geq 0.4\mu\text{m}$	Capacity	Wafer-starts per week x1000	175.5	173.8	170.9	159.1	163.4	161.2	165.6	144.6	112.7	116.4	120.8	115.3
		% growth re. preceding quarter	3.2	-1.0	-1.7	-6.9	2.7	-1.3	2.7	-12.7	-22.1	3.3	3.8	-4.6
		% growth re. one year ago	-2.0	-5.3	-6.8	6.4	-6.9	-7.2	-3.1	-9.1	-31.0	-27.8	-27.1	-20.3
	Actual Wafer-Starts	Wafer-starts per week x1000	152.4	152.7	147.6	131.5	129.0	120.1	83.0	52.1	65.0	80.1	92.8	95.7
		% growth re. preceding quarter	7.9	0.2	-3.3	-10.9	-1.9	-6.9	-30.9	-37.2	24.8	23.2	15.9	3.1
		% growth re. one year ago	-4.6	-3.8	-4.7	6.9	-15.4	-21.3	-43.8	-60.4	-49.6	-33.3	11.8	83.7
Utilisation	in percent (%)	86.8	87.9	86.4	82.7	78.9	74.5	50.1	36.0	57.7	68.8	76.8	83.0	
MOS $< 0.4\mu\text{m}$ to $\geq 0.2\mu\text{m}$	Capacity	Wafer-starts per week x1000	259.4	255.4	254.6	248.8	231.9	233.3	249.2	222.0	208.4	190.6	178.1	166.2
		% growth re. preceding quarter	3.0	-1.5	-0.3	-2.3	-6.8	0.6	6.8	-10.9	-6.1	-8.5	-6.6	-6.7
		% growth re. one year ago	-14.0	-14.8	-16.4	-1.2	-10.6	-8.7	-2.1	-10.8	-10.1	-18.3	-28.5	-25.1
	Actual Wafer-Starts	Wafer-starts per week x1000	218.5	216.0	208.5	212.1	190.9	178.3	126.5	90.9	132.3	146.3	140.0	147.3
		% growth re. preceding quarter	7.5	-1.1	-3.5	1.7	-10.0	-6.6	-29.1	-28.1	45.5	10.6	-4.3	5.2
		% growth re. one year ago	-15.1	-15.4	-17.6	4.4	-12.6	-17.5	-39.3	-57.1	-30.7	-17.9	10.7	62.0
Utilisation	in percent (%)	84.2	84.6	81.9	85.2	82.3	76.4	50.8	40.9	63.5	76.8	78.6	88.6	
MOS $< 0.2\mu\text{m}$ to $\geq 0.12\mu\text{m}$	Capacity	Wafer-starts per week x1000	413.8	421.0	432.0	410.8	390.3	381.1	381.1	370.3	353.3	292.2	290.8	277.3
		% growth re. preceding quarter	-1.3	1.7	2.6	-4.9	-5.0	-2.4	0.0	-2.8	-4.6	-17.3	-0.5	-4.6
		% growth re. one year ago	-9.8	-4.7	-2.3	-2.0	-5.7	-9.5	-11.8	-9.9	-9.5	-23.3	-23.7	-25.1
	Actual Wafer-Starts	Wafer-starts per week x1000	371.1	373.1	390.8	360.0	346.2	322.5	208.9	157.6	249.9	248.3	251.1	248.1
		% growth re. preceding quarter	3.7	0.5	4.7	-7.9	-3.8	-6.8	-35.2	-24.6	58.6	-0.6	1.1	-1.2
		% growth re. one year ago	-13.4	-3.2	5.9	0.6	-6.7	-13.6	-46.5	-56.2	-27.8	-23.0	20.2	57.4
Utilisation	in percent (%)	89.7	88.6	90.5	87.6	88.7	84.6	54.8	42.6	70.7	85.0	86.3	89.5	

These statistics are based on data supplied by merchant SC manufacturers who together represent the majority of the world's SC production.

All MOS data are expressed in 8 inch equivalent wafers.

WSpW = Wafer-Starts per Week.

Legends : Capacity WSpW Actual WSpW Utilisation of capacity in percent



		2Q 07	3Q 07	4Q 07	1Q 08	2Q 08	3Q 08	4Q 08	1Q 09	2Q 09	3Q 09	4Q 09	1Q 10	
MOS <0.12µm to ≥0.08µm	Capacity	Wafer-starts per week x1000	353.9	403.1	404.1	385.8	290.1	258.8	234.7	196.6	208.0	223.3	182.3	159.4
		% growth re. preceding quarter	n.a.	n.a.	0.2	-4.5	-24.8	-10.8	-9.3	-16.2	5.8	7.4	-18.4	-12.6
		% growth re. one year ago	n.a.	n.a.	n.a.	n.a.	n.a.	-35.8	-41.9	-49.0	-28.3	-13.7	-22.3	-18.9
	Actual Wafer-Starts	Wafer-starts per week x1000	333.5	382.6	383.4	366.4	265.9	227.9	152.6	134.5	162.1	189.0	158.6	151.4
		% growth re. preceding quarter	n.a.	n.a.	0.2	-4.4	-27.4	-14.3	-33.0	-11.9	20.5	16.6	-16.1	-4.5
		% growth re. one year ago	n.a.	n.a.	n.a.	n.a.	n.a.	-40.4	-60.2	-63.3	-39.0	-17.1	3.9	12.6
	Utilisation	in percent (%)	94.2	94.9	94.9	95.0	91.7	88.1	65.0	68.4	77.9	84.6	87.0	95.0

		2Q 07	3Q 07	4Q 07	1Q 08	2Q 08	3Q 08	4Q 08	1Q 09	2Q 09	3Q 09	4Q 09	1Q 10	
MOS <0.08µm	Capacity	Wafer-starts per week x1000	541.6	616.9	633.4	722.1	894.6	963.1	931.1	884.3	900.9			
		% growth re. preceding quarter	n.a.	n.a.	2.7	14.0	23.9	7.7	-3.3	-5.0	1.9			
		% growth re. one year ago	n.a.	n.a.	n.a.	n.a.	n.a.	56.1	47.0	22.5	0.7			
	Actual Wafer-Starts	Wafer-starts per week x1000	500.3	573.8	604.1	698.5	851.8	917.2	785.8	618.1	812.6			
		% growth re. preceding quarter	n.a.	n.a.	5.3	15.6	21.9	7.7	-14.3	-21.3	31.5			
		% growth re. one year ago	n.a.	n.a.	n.a.	n.a.	n.a.	59.8	30.1	-11.5	-4.6			
	Utilisation	in percent (%)	92.4	93.0	95.4	96.7	95.2	95.2	84.4	69.9	90.2			

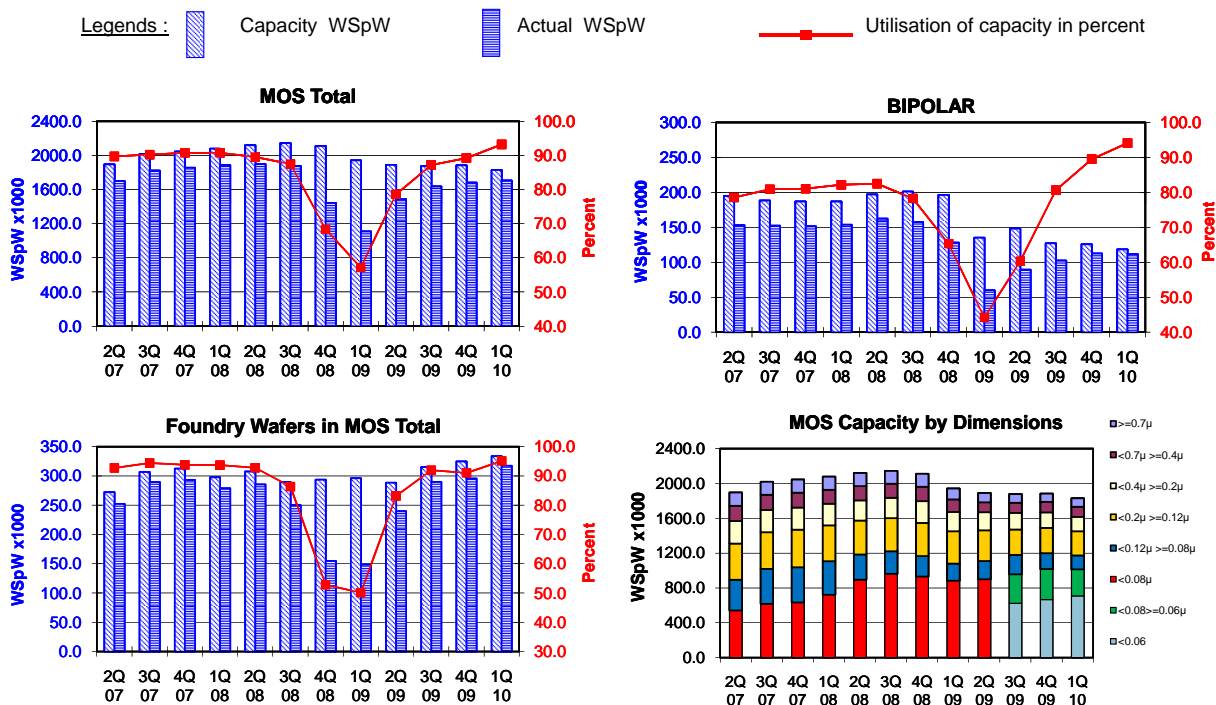
		2Q 07	3Q 07	4Q 07	1Q 08	2Q 08	3Q 08	4Q 08	1Q 09	2Q 09	3Q 09	4Q 09	1Q 10
MOS <0.08µm to ≥0.06µm	Capacity	Wafer-starts per week x1000									332.1	350.1	305.0
		% growth re. preceding quarter										5.4	-12.9
		% growth re. one year ago										n.a.	n.a.
	Actual Wafer-Starts	Wafer-starts per week x1000									316.5	320.0	294.4
		% growth re. preceding quarter										1.1	-8.0
		% growth re. one year ago										n.a.	n.a.
	Utilisation	in percent (%)									95.3	91.4	96.5

		2Q 07	3Q 07	4Q 07	1Q 08	2Q 08	3Q 08	4Q 08	1Q 09	2Q 09	3Q 09	4Q 09	1Q 10
MOS <0.06µm	Capacity	Wafer-starts per week x1000									624.6	667.4	709.6
		% growth re. preceding quarter										6.9	6.3
		% growth re. one year ago										n.a.	n.a.
	Actual Wafer-Starts	Wafer-starts per week x1000									585.7	642.5	688.3
		% growth re. preceding quarter										9.7	7.1
		% growth re. one year ago										n.a.	n.a.
	Utilisation	in percent (%)									93.8	96.3	97.0

These statistics are based on data supplied by merchant SC manufacturers who together represent the majority of the world's SC production.

All MOS data are expressed in 8 inch equivalent wafers. Bipolar data are expressed in 5 inch equivalent wafers.

WSPw = Wafer-Starts per Week.



		2Q 07	3Q 07	4Q 07	1Q 08	2Q 08	3Q 08	4Q 08	1Q 09	2Q 09	3Q 09	4Q 09	1Q 10
MOS Total	Capacity	Wafer-starts per week x 1000	1895.4	2019.1	2044.8	2078.8	2120.8	2144.5	2110.4	1942.1	1890.0	1877.1	1884.0
		% growth re. preceding quarter	5.6	6.5	1.3	1.7	2.0	1.1	-1.6	-8.0	-2.7	-0.7	0.4
		% growth re. one year ago	14.2	17.2	13.6	15.8	11.9	6.2	3.2	-6.6	-10.9	-12.5	-10.7
	Actual Wafer-Starts	Wafer-starts per week x1000	1700.4	1821.7	1855.3	1886.5	1898.6	1875.5	1443.1	1109.9	1486.1	1636.8	1680.8
	% growth re. preceding quarter	8.4	7.1	1.8	1.7	0.6	-1.2	-23.1	-23.1	33.9	10.1	2.7	
	% growth re. one year ago	11.5	18.7	18.3	20.2	11.7	3.0	-22.2	-41.2	-21.7	-12.7	16.5	
	Utilisation	in percent (%)	89.7	90.2	90.7	90.7	89.5	87.5	68.4	57.1	78.6	87.2	89.2

BIPOLAR (5 inch equivs.)	Capacity	Wafer-starts per week x1000	194.8	188.3	186.9	187.0	197.0	201.1	196.3	135.3	148.2	127.1	125.8
		% growth re. preceding quarter	-1.7	-3.3	-0.7	0.1	5.3	2.1	-2.4	-31.1	9.5	-14.2	-1.0
		% growth re. one year ago	-9.4	-13.1	-12.9	-5.7	1.1	6.8	5.0	-27.6	-24.8	-36.8	-35.9
	Actual Wafer-Starts	Wafer-starts per week x1000	153.0	152.3	151.5	153.7	162.5	157.4	128.2	59.8	89.4	102.5	112.6
	% growth re. preceding quarter	-1.4	-0.5	-0.5	1.5	5.7	-3.1	-18.6	-53.4	49.5	14.7	9.9	
	% growth re. one year ago	-10.1	-9.2	-0.9	-1.0	6.2	3.3	-15.4	-61.1	-45.0	-34.9	-12.2	
	Utilisation	in percent (%)	78.5	80.9	81.1	82.2	82.5	78.3	65.3	44.2	60.3	80.6	89.5

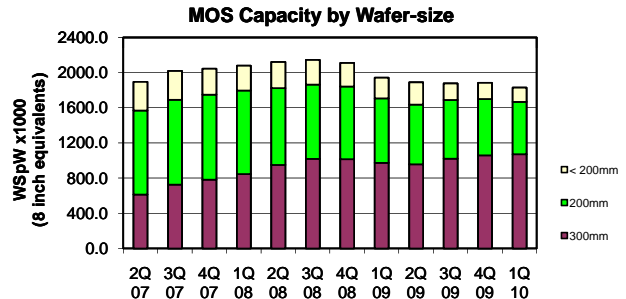
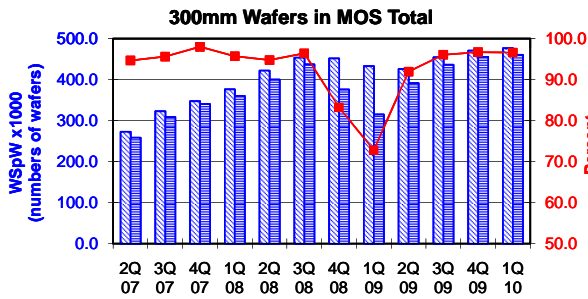
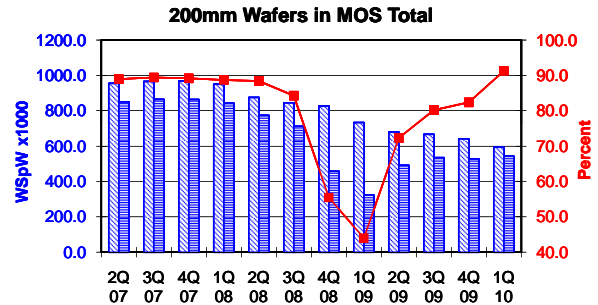
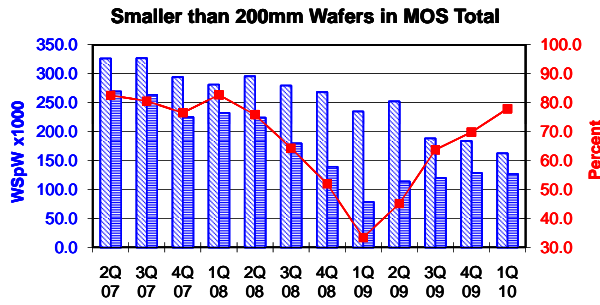
Foundry Wafers in MOS Total	Capacity	Wafer-starts per week x1000	272.2	306.6	312.5	297.7	307.5	289.5	293.7	296.1	288.3	315.2	324.8
		% growth re. preceding quarter	4.3	12.6	1.9	-4.7	3.3	-5.9	1.5	0.8	-2.6	9.3	3.0
		% growth re. one year ago	-2.9	5.9	4.8	14.0	13.0	-5.6	-6.0	-0.5	-6.2	8.9	10.6
	Actual Wafer-Starts	Wafer-starts per week x1000	252.4	289.4	293.1	278.9	285.3	250.0	155.0	148.3	239.7	289.8	295.6
	% growth re. preceding quarter	22.9	14.7	1.3	-4.8	2.3	-12.4	-38.0	-4.3	61.6	20.9	2.0	
	% growth re. one year ago	-4.4	9.3	21.6	35.8	13.0	-13.6	-47.1	-46.8	-16.0	15.9	90.7	
	Utilisation	in percent (%)	92.7	94.4	93.8	93.7	92.8	86.4	52.8	50.1	83.1	91.9	91.0

These statistics are based on data supplied by merchant SC manufacturers who together represent the majority of the world's SC production.

All MOS data are expressed in 8 inch equivalent wafers, except for the 300mm wafer data where annotated as "numbers of wafers".

WSpW = Wafer-Starts per Week.

Legends: Capacity WSpW Actual WSpW Utilisation of capacity in percent



		2Q 07	3Q 07	4Q 07	1Q 08	2Q 08	3Q 08	4Q 08	1Q 09	2Q 09	3Q 09	4Q 09	1Q 10	
< 200mm Wafers in MOS Total	Capacity	Wafer-starts per week x 1000	326.2	326.8	294.2	281.2	295.7	279.4	268.1	234.8	252.3	188.1	183.9	162.5
		% growth re. preceding quarter	7.6	0.2	-10.0	-4.4	5.1	-5.5	-4.1	-12.4	7.4	-25.4	-2.3	-11.6
	Actual Wafer-Starts	Wafer-starts per week x1000	269.2	263.4	225.1	232.5	224.3	179.7	139.2	78.3	113.8	119.9	128.3	126.7
		% growth re. preceding quarter	11.1	-2.2	-14.5	3.3	-3.5	-19.9	-22.5	-43.7	45.3	5.3	7.0	-1.3
		% growth re. one year ago	39.4	41.1	32.6	-4.0	-16.7	-31.8	-38.1	-66.3	-49.2	-33.3	-7.8	61.7
	Utilisation	in percent (%)	82.5	80.6	76.5	82.7	75.9	64.3	51.9	33.4	45.1	63.7	69.8	77.9

		2Q 07	3Q 07	4Q 07	1Q 08	2Q 08	3Q 08	4Q 08	1Q 09	2Q 09	3Q 09	4Q 09	1Q 10	
200mm wafers in MOS Total	Capacity	Wafer-starts per week x1000	955.4	966.2	968.7	950.5	875.2	844.7	826.0	733.5	679.7	666.8	640.4	594.7
		% growth re. preceding quarter	0.5	1.1	0.3	-1.9	-7.9	-3.5	-2.2	-11.2	-7.3	-1.9	-4.0	-7.1
		% growth re. one year ago	-6.5	-7.3	-8.8	-0.1	-8.4	-12.6	-14.7	-22.8	-22.3	-21.1	-22.5	-18.9
	Actual Wafer-Starts	Wafer-starts per week x1000	850.0	864.0	863.9	843.1	774.1	711.9	458.1	322.6	491.4	534.8	527.6	542.8
		% growth re. preceding quarter	1.8	1.6	0.0	-2.4	-8.2	-8.0	-35.7	-29.6	52.3	8.8	-1.3	2.9
		% growth re. one year ago	-9.3	-7.0	-6.9	1.0	-8.9	-17.6	-47.0	-61.7	-36.5	-24.9	15.2	68.3
Utilisation	in percent (%)	89.0	89.4	89.2	88.7	88.4	84.3	55.5	44.0	72.3	80.2	82.4	91.3	

		2Q 07	3Q 07	4Q 07	1Q 08	2Q 08	3Q 08	4Q 08	1Q 09	2Q 09	3Q 09	4Q 09	1Q 10	
300mm wafers in MOS Total	Capacity	WSpW x 1000 expressed in 8 inch equivalent wafers	613.8	726.1	781.9	847.1	950.0	1020.4	1016.3	973.8	958.1	1022.2	1059.8	1072.8
		WSpW x 1000 expressed in numbers of wafers	272.8	322.7	347.5	376.5	422.2	453.5	451.7	432.8	425.8	454.3	471.0	476.8
		% growth re. preceding quarter	13.7	18.3	7.7	8.3	12.1	7.4	-0.4	-4.2	-1.6	6.7	3.7	1.2
		% growth re. one year ago	50.4	52.2	41.0	56.9	54.8	40.5	30.0	15.0	0.9	0.2	4.3	10.2
	Actual Wafer-Starts	WSpW x 1000 expressed in 8 inch equivalent wafers	581.2	694.4	766.4	810.9	900.2	983.9	845.8	709.0	880.9	982.1	1024.9	1036.4
		WSpW x 1000 expressed in numbers of wafers	258.3	308.6	340.6	360.4	400.1	437.3	375.9	315.1	391.5	436.5	455.5	460.6
		% growth re. preceding quarter	18.2	19.5	10.4	5.8	11.0	9.3	-14.0	-16.2	24.2	11.5	4.4	1.1
		% growth re. one year ago	47.2	65.7	62.6	64.9	54.9	41.7	10.4	-12.6	-2.1	-0.2	21.2	46.2
	Utilisation	in percent (%)	94.7	95.6	98.0	95.7	94.8	96.4	83.2	72.8	91.9	96.1	96.7	96.6

These statistics are based on data supplied by merchant SC manufacturers who together represent the majority of the world's SC production.