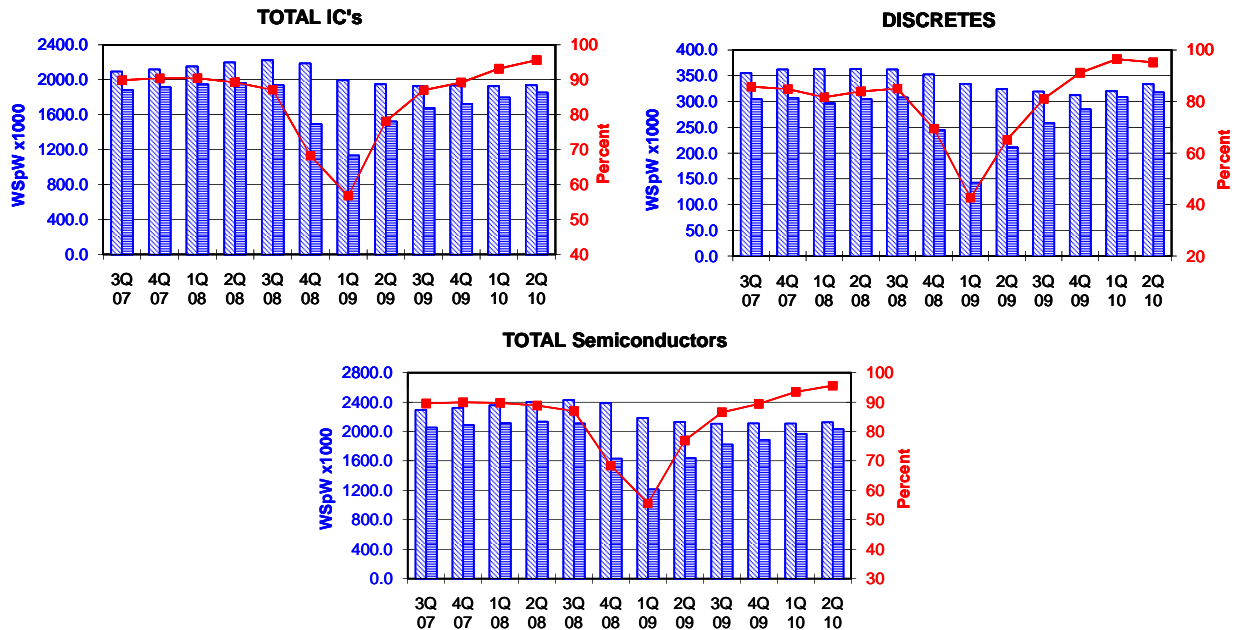


TOTAL IC's and TOTAL Semiconductors data are expressed in 8 inch equivalent wafers. DISCRETES data are expressed in 6 inch equivalent wafers. "TOTAL IC's" include Bipolar data, which were converted for this purpose from 5 inch to 8 inch equivalent wafers by the factor 0.391. "TOTAL Semiconductors" include DISCRETES data, which were converted for this purpose from 6 inch to 8 inch equivalent wafers by the factor 0.563.

WSpW = Wafer-Starts per Week.

Legends : Capacity WSpW Actual WSpW Utilisation of capacity in percent



		3Q 07	4Q 07	1Q 08	2Q 08	3Q 08	4Q 08	1Q 09	2Q 09	3Q 09	4Q 09	1Q 10	2Q 10	
TOTAL IC's	Capacity	Wafer-starts per week x 1000	2092.7	2117.9	2151.9	2197.8	2223.1	2187.2	1995.0	1947.9	1926.8	1933.2	1926.9	1938.0
		% growth re. preceding quarter	6.1	1.2	1.6	2.1	1.2	-1.6	-8.8	-2.4	-1.1	0.3	-0.3	0.6
		% growth re. one year ago	15.7	12.4	15.0	11.5	6.2	3.3	-7.3	-11.4	-13.3	-11.6	-3.4	-0.5
	Actual Wafer-Starts	Wafer-starts per week x 1000	1881.2	1914.5	1946.6	1962.1	1937.0	1493.2	1133.3	1521.1	1676.9	1724.8	1795.7	1853.3
		% growth re. preceding quarter	6.9	1.8	1.7	0.8	-1.3	-22.9	-24.1	34.2	10.2	2.9	4.1	3.2
		% growth re. one year ago	17.6	17.6	19.4	11.5	3.0	-22.0	-41.8	-22.5	-13.4	15.5	58.5	21.8
Utilisation	in percent (%)	89.9	90.4	90.5	89.3	87.1	68.3	56.8	78.1	87.0	89.2	93.2	95.6	

		3Q 07	4Q 07	1Q 08	2Q 08	3Q 08	4Q 08	1Q 09	2Q 09	3Q 09	4Q 09	1Q 10	2Q 10	
DISCRETES (6 inch equivs.)	Capacity	Wafer-starts per week x1000	355.3	362.0	363.0	362.9	362.1	352.4	334.2	324.1	319.1	312.2	320.2	333.7
		% growth re. preceding quarter	-1.1	1.9	0.3	0.0	-0.2	-2.7	-5.2	-3.0	-1.5	-2.2	2.6	4.2
		% growth re. one year ago	n.a.	n.a.	7.2	1.0	1.9	-2.7	-7.9	-10.7	-11.9	-11.4	-4.2	3.0
	Actual Wafer-Starts	Wafer-starts per week x1000	304.6	307.1	296.4	304.5	307.8	244.8	142.4	211.1	258.5	284.7	308.8	317.6
		% growth re. preceding quarter	-2.3	0.8	-3.5	2.7	1.1	-20.5	-41.8	48.2	22.5	10.1	8.5	2.8
		% growth re. one year ago	n.a.	n.a.	-1.4	-2.3	1.1	-20.3	-52.0	-30.7	-16.0	16.3	116.9	50.5
Utilisation	in percent (%)	85.7	84.8	81.7	83.9	85.0	69.5	42.6	65.1	81.0	91.2	96.4	95.2	

		2Q 07	3Q 07	4Q 07	1Q 08	2Q 08	3Q 08	4Q 08	1Q 09	2Q 09	3Q 09	4Q 09	1Q 10	2Q 10
TOTAL Semiconductors	Capacity	Wafer-starts per week x1000	2292.8	2321.7	2356.3	2402.1	2427.0	2385.6	2183.2	2130.4	2106.4	2109.0	2107.1	2125.9
		% growth re. preceding quarter	5.5	1.3	1.5	1.9	1.0	-1.7	-8.5	-2.4	-1.1	0.1	-0.1	0.9
		% growth re. one year ago	n.a.	n.a.	14.2	10.5	5.9	2.8	-7.3	-11.3	-13.2	-11.6	-3.5	-0.2
	Actual Wafer-Starts	Wafer-starts per week x1000	2052.7	2087.4	2113.5	2133.6	2110.3	1631.0	1213.5	1639.9	1822.4	1885.1	1969.6	2032.1
		% growth re. preceding quarter	6.0	1.7	1.2	1.0	-1.1	-22.7	-25.6	35.1	11.1	3.4	4.5	3.2
		% growth re. one year ago	n.a.	n.a.	17.5	10.2	2.8	-21.9	-42.6	-23.1	-13.6	15.6	62.3	23.9
Utilisation	in percent (%)	89.5	89.9	89.7	88.8	87.0	68.4	55.6	77.0	86.5	89.4	93.5	95.6	

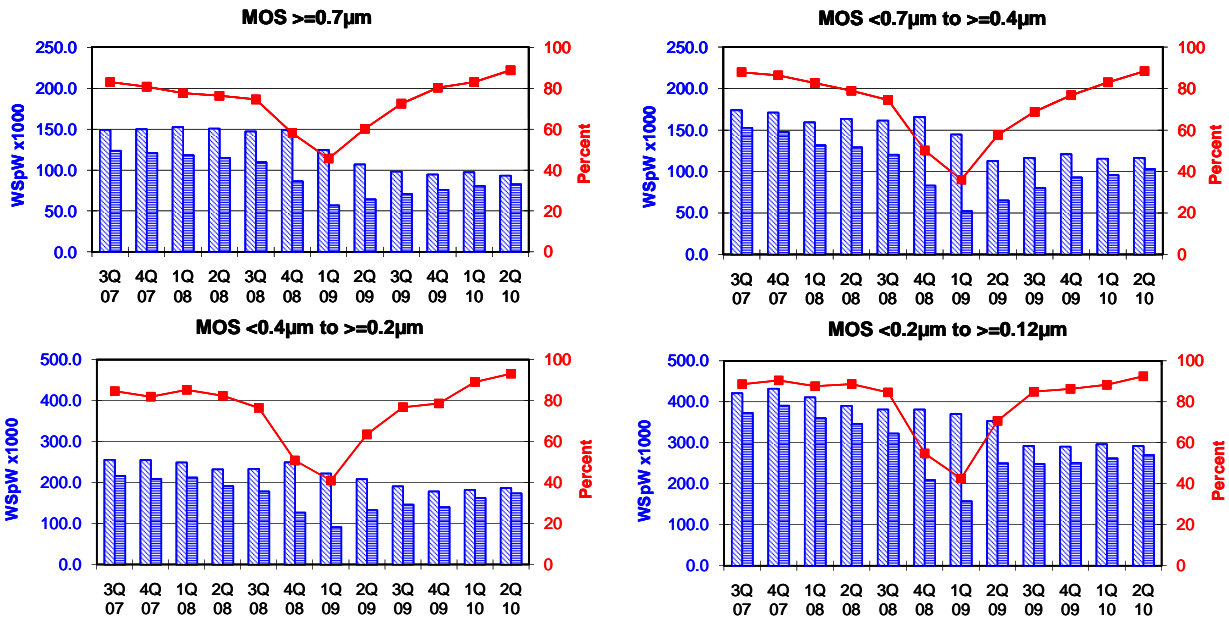
Yellow coloured cells reflect revised inputs Green bordered cells contain changes resulting from revised inputs

These statistics are based on data supplied by merchant SC manufacturers who together represent the majority of the world's SC production.

All MOS data are expressed in 8 inch equivalent wafers.

WSpW = Wafer-Starts per Week.

Legends : Capacity WSpW Actual WSpW Utilisation of capacity in percent



		3Q 07	4Q 07	1Q 08	2Q 08	3Q 08	4Q 08	1Q 09	2Q 09	3Q 09	4Q 09	1Q 10	2Q 10	
MOS $\geq 0.7\mu\text{m}$	Capacity	Wafer-starts per week x1000	148.9	149.8	152.2	150.5	147.0	148.7	124.3	106.7	97.9	94.5	97.2	
		% growth re. preceding quarter	-1.5	0.6	1.6	-1.1	-2.3	1.2	-16.4	-14.2	-8.2	-3.5	2.9	-4.3
		% growth re. one year ago	-12.9	-12.8	2.3	-0.5	-1.3	-0.7	-18.3	-29.1	-33.4	-36.4	-21.8	-12.8
	Actual Wafer-Starts	Wafer-starts per week x1000	123.5	120.9	118.0	114.8	109.5	86.3	56.7	64.2	70.9	75.8	80.6	82.5
		% growth re. preceding quarter	-0.9	-2.1	-2.4	-2.7	-4.6	-21.2	-34.3	13.2	10.4	6.9	6.3	2.4
		% growth re. one year ago	-14.0	-13.8	1.7	-7.9	-11.3	-28.6	-51.9	-44.1	-35.3	-12.2	42.2	28.5
Utilisation	in percent (%)	82.9	80.7	77.5	76.3	74.5	58.0	45.6	60.2	72.4	80.2	82.9	88.7	

		3Q 07	4Q 07	1Q 08	2Q 08	3Q 08	4Q 08	1Q 09	2Q 09	3Q 09	4Q 09	1Q 10	2Q 10	
MOS $< 0.7\mu\text{m}$ to $\geq 0.4\mu\text{m}$	Capacity	Wafer-starts per week x1000	173.8	170.9	159.1	163.4	161.2	165.6	144.6	112.7	116.4	120.8	115.3	
		% growth re. preceding quarter	-1.0	-1.7	-6.9	2.7	-1.3	2.7	-12.7	-22.1	3.3	3.8	-4.6	1.0
		% growth re. one year ago	-5.3	-6.8	6.4	-6.9	-7.2	-3.1	-9.1	-31.0	-27.8	-27.1	-20.3	3.3
	Actual Wafer-Starts	Wafer-starts per week x1000	152.7	147.6	131.5	129.0	120.1	83.0	52.1	65.0	80.1	92.8	95.7	102.9
		% growth re. preceding quarter	0.2	-3.3	-10.9	-1.9	-6.9	-30.9	-37.2	24.8	23.2	15.9	3.1	7.5
		% growth re. one year ago	-3.8	-4.7	6.9	-15.4	-21.3	-43.8	-60.4	-49.6	-33.3	11.8	83.7	58.3
Utilisation	in percent (%)	87.9	86.4	82.7	78.9	74.5	50.1	36.0	57.7	68.8	76.8	83.0	88.4	

		3Q 07	4Q 07	1Q 08	2Q 08	3Q 08	4Q 08	1Q 09	2Q 09	3Q 09	4Q 09	1Q 10	2Q 10	
MOS $< 0.4\mu\text{m}$ to $\geq 0.2\mu\text{m}$	Capacity	Wafer-starts per week x1000	255.4	254.6	248.8	231.9	233.3	249.2	222.0	208.4	190.6	178.1	182.2	
		% growth re. preceding quarter	-1.5	-0.3	-2.3	-6.8	0.6	6.8	-10.9	-6.1	-8.5	-6.6	2.3	2.3
		% growth re. one year ago	-14.8	-16.4	-1.2	-10.6	-8.7	-2.1	-10.8	-10.1	-18.3	-28.5	-17.9	-10.6
	Actual Wafer-Starts	Wafer-starts per week x1000	216.0	208.5	212.1	190.9	178.3	126.5	90.9	132.3	146.3	140.0	162.3	173.6
		% growth re. preceding quarter	-1.1	-3.5	1.7	-10.0	-6.6	-29.1	-28.1	45.5	10.6	-4.3	15.9	7.0
		% growth re. one year ago	-15.4	-17.6	4.4	-12.6	-17.5	-39.3	-57.1	-30.7	-17.9	10.7	78.5	31.2
Utilisation	in percent (%)	84.6	81.9	85.2	82.3	76.4	50.8	40.9	63.5	76.8	78.6	89.1	93.1	

		3Q 07	4Q 07	1Q 08	2Q 08	3Q 08	4Q 08	1Q 09	2Q 09	3Q 09	4Q 09	1Q 10	2Q 10	
MOS $< 0.2\mu\text{m}$ to $\geq 0.12\mu\text{m}$	Capacity	Wafer-starts per week x1000	421.0	432.0	410.8	390.3	381.1	381.1	370.3	353.3	292.2	290.8	296.7	
		% growth re. preceding quarter	1.7	2.6	-4.9	-5.0	-2.4	0.0	-2.8	-4.6	-17.3	-0.5	2.0	-1.5
		% growth re. one year ago	-4.7	-2.3	-2.0	-5.7	-9.5	-11.8	-9.9	-9.5	-23.3	-23.7	-19.9	-17.3
	Actual Wafer-Starts	Wafer-starts per week x1000	373.1	390.8	360.0	346.2	322.5	208.9	157.6	249.9	248.3	251.1	262.1	270.2
		% growth re. preceding quarter	0.5	4.7	-7.9	-3.8	-6.8	-35.2	-24.6	58.6	-0.6	1.1	4.4	3.1
		% growth re. one year ago	-3.2	5.9	0.6	-6.7	-13.6	-46.5	-56.2	-27.8	-23.0	20.2	66.3	8.1
Utilisation	in percent (%)	88.6	90.5	87.6	88.7	84.6	54.8	42.6	70.7	85.0	86.3	88.3	92.5	

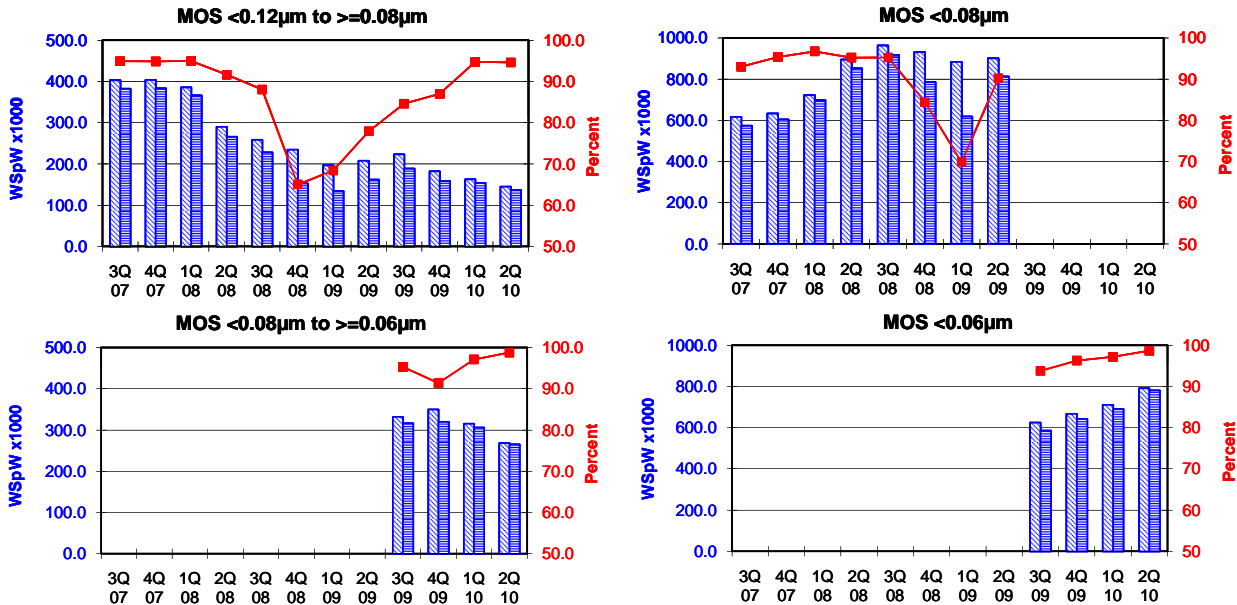
Yellow coloured cells reflect revised inputs Green bordered cells contain changes resulting from revised inputs

These statistics are based on data supplied by merchant SC manufacturers who together represent the majority of the world's SC production.

All MOS data are expressed in 8 inch equivalent wafers.

WSpW = Wafer-Starts per Week.

Legends : Capacity WSpW Actual WSpW Utilisation of capacity in percent



		3Q 07	4Q 07	1Q 08	2Q 08	3Q 08	4Q 08	1Q 09	2Q 09	3Q 09	4Q 09	1Q 10	2Q 10	
MOS <0.12µm to >=0.08µm	Capacity	Wafer-starts per week x1000	403.1	404.1	385.8	290.1	258.8	234.7	196.6	208.0	223.3	182.3	162.8	144.9
		% growth re. preceding quarter	n.a.	0.2	-4.5	-24.8	-10.8	-9.3	-16.2	5.8	7.4	-18.4	-10.7	-11.0
		% growth re. one year ago	n.a.	n.a.	n.a.	n.a.	-35.8	-41.9	-49.0	-28.3	-13.7	-22.3	-17.2	-30.3
	Actual Wafer-Starts	Wafer-starts per week x1000	382.6	383.4	366.4	265.9	227.9	152.6	134.5	162.1	189.0	158.6	154.3	137.1
		% growth re. preceding quarter	n.a.	0.2	-4.4	-27.4	-14.3	-33.0	-11.9	20.5	16.6	-16.1	-2.7	-11.1
		% growth re. one year ago	n.a.	n.a.	n.a.	n.a.	-40.4	-60.2	-63.3	-39.0	-17.1	3.9	14.7	-15.4
Utilisation	in percent (%)	94.9	94.9	95.0	91.7	88.1	65.0	68.4	77.9	84.6	87.0	94.8	94.6	

		3Q 07	4Q 07	1Q 08	2Q 08	3Q 08	4Q 08	1Q 09	2Q 09	3Q 09	4Q 09	1Q 10	2Q 10	
MOS <0.08µm	Capacity	Wafer-starts per week x1000	616.9	633.4	722.1	894.6	963.1	931.1	884.3	900.9				
		% growth re. preceding quarter	n.a.	2.7	14.0	23.9	7.7	-3.3	-5.0	1.9				
		% growth re. one year ago	n.a.	n.a.	n.a.	n.a.	56.1	47.0	22.5	0.7				
	Actual Wafer-Starts	Wafer-starts per week x1000	573.8	604.1	698.5	851.8	917.2	785.8	618.1	812.6				
		% growth re. preceding quarter	n.a.	5.3	15.6	21.9	7.7	-14.3	-21.3	31.5				
		% growth re. one year ago	n.a.	n.a.	n.a.	n.a.	59.8	30.1	-11.5	-4.6				
Utilisation	in percent (%)	93.0	95.4	96.7	95.2	95.2	84.4	69.9	90.2					

		3Q 07	4Q 07	1Q 08	2Q 08	3Q 08	4Q 08	1Q 09	2Q 09	3Q 09	4Q 09	1Q 10	2Q 10	
MOS <0.08µm to >=0.06µm	Capacity	Wafer-starts per week x1000								332.1	350.1	315.3	268.5	
		% growth re. preceding quarter									5.4	-9.9	-14.8	
		% growth re. one year ago										n.a.	n.a.	
	Actual Wafer-Starts	Wafer-starts per week x1000									316.5	320.0	306.2	265.3
		% growth re. preceding quarter										1.1	-4.3	-13.4
		% growth re. one year ago										n.a.	n.a.	n.a.
Utilisation	in percent (%)									95.3	91.4	97.1	98.8	

		3Q 07	4Q 07	1Q 08	2Q 08	3Q 08	4Q 08	1Q 09	2Q 09	3Q 09	4Q 09	1Q 10	2Q 10	
MOS <0.06µm	Capacity	Wafer-starts per week x1000								624.6	667.4	711.0	791.2	
		% growth re. preceding quarter									6.9	6.5	11.3	
		% growth re. one year ago										n.a.	n.a.	n.a.
	Actual Wafer-Starts	Wafer-starts per week x1000									585.7	642.5	690.9	780.5
		% growth re. preceding quarter										9.7	7.5	13.0
		% growth re. one year ago										n.a.	n.a.	n.a.
Utilisation	in percent (%)									93.8	96.3	97.2	98.6	

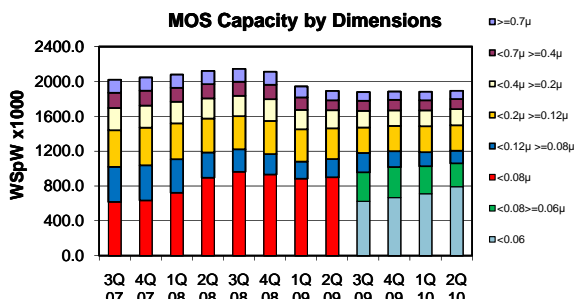
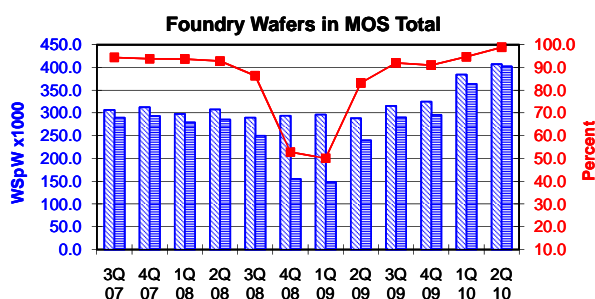
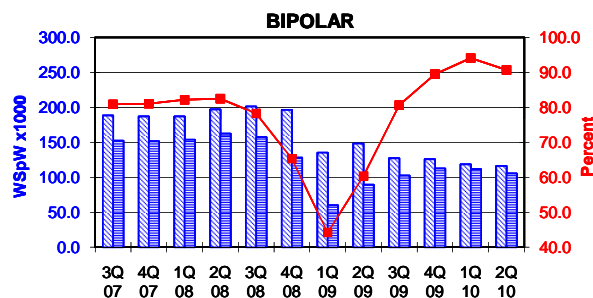
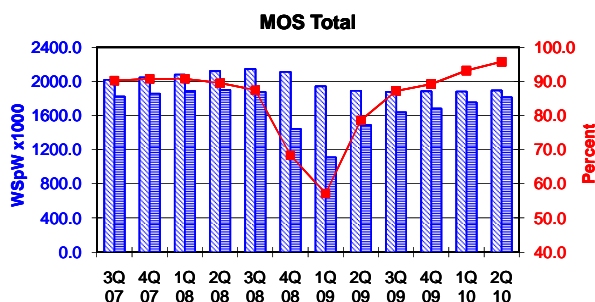
Yellow coloured cells reflect revised inputs Green bordered cells contain changes resulting from revised inputs

These statistics are based on data supplied by merchant SC manufacturers who together represent the majority of the world's SC production.

All MOS data are expressed in 8 inch equivalent wafers. Bipolar data are expressed in 5 inch equivalent wafers.

WSPW = Wafer-Starts per Week.

Legends: Capacity WSPW Actual WSPW Utilisation of capacity in percent



			3Q 07	4Q 07	1Q 08	2Q 08	3Q 08	4Q 08	1Q 09	2Q 09	3Q 09	4Q 09	1Q 10	2Q 10
MOS Total	Capacity	Wafer-starts per week x 1000	2019.1	2044.8	2078.8	2120.8	2144.5	2110.4	1942.1	1890.0	1877.1	1884.0	1880.5	1892.6
		% growth re. preceding quarter	6.5	1.3	1.7	2.0	1.1	-1.6	-8.0	-2.7	-0.7	0.4	-0.2	0.6
		% growth re. one year ago	17.2	13.6	15.8	11.9	6.2	3.2	-6.6	-10.9	-12.5	-10.7	-3.2	0.1
	Actual Wafer-Starts	Wafer-starts per week x1000	1821.7	1855.3	1886.5	1898.6	1875.5	1443.1	1109.9	1486.1	1636.8	1680.8	1752.1	1812.1
% growth re. preceding quarter		7.1	1.8	1.7	0.6	-1.2	-23.1	-23.1	33.9	10.1	2.7	4.2	3.4	
	% growth re. one year ago	18.7	18.3	20.2	11.7	3.0	-22.2	-41.2	-21.7	-12.7	16.5	57.9	21.9	
	Utilisation	in percent (%)	90.2	90.7	90.7	89.5	87.5	68.4	57.1	78.6	87.2	89.2	93.2	95.7

			3Q 07	4Q 07	1Q 08	2Q 08	3Q 08	4Q 08	1Q 09	2Q 09	3Q 09	4Q 09	1Q 10	2Q 10
BIPOLAR (5 inch equivs.)	Capacity	Wafer-starts per week x1000	188.3	186.9	187.0	197.0	201.1	196.3	135.3	148.2	127.1	125.8	118.6	116.2
		% growth re. preceding quarter	-3.3	-0.7	0.1	5.3	2.1	-2.4	-31.1	9.5	-14.2	-1.0	-5.7	-2.0
		% growth re. one year ago	-13.1	-12.9	-5.7	1.1	6.8	5.0	-27.6	-24.8	-36.8	-35.9	-12.3	-21.6
	Actual Wafer-Starts	Wafer-starts per week x1000	152.3	151.5	153.7	162.5	157.4	128.2	59.8	89.4	102.5	112.6	111.6	105.4
% growth re. preceding quarter		-0.5	-0.5	1.5	5.7	-3.1	-18.6	-53.4	49.5	14.7	9.9	-0.9	-5.6	
	% growth re. one year ago	-9.2	-0.9	-1.0	6.2	3.3	-15.4	-61.1	-45.0	-34.9	-12.2	86.6	17.9	
	Utilisation	in percent (%)	80.9	81.1	82.2	82.5	78.3	65.3	44.2	60.3	80.6	89.5	94.1	90.7

			3Q 07	4Q 07	1Q 08	2Q 08	3Q 08	4Q 08	1Q 09	2Q 09	3Q 09	4Q 09	1Q 10	2Q 10
Foundry Wafers in MOS Total	Capacity	Wafer-starts per week x1000	306.6	312.5	297.7	307.5	289.5	293.7	296.1	288.3	315.2	324.8	384.2	407.0
		% growth re. preceding quarter	12.6	1.9	-4.7	3.3	-5.9	1.5	0.8	-2.6	9.3	3.0	18.3	5.9
		% growth re. one year ago	5.9	4.8	14.0	13.0	-5.6	-6.0	-0.5	-6.2	8.9	10.6	29.8	41.2
	Actual Wafer-Starts	Wafer-starts per week x1000	289.4	293.1	278.9	285.3	250.0	155.0	148.3	239.7	289.8	295.6	363.8	402.2
% growth re. preceding quarter		14.7	1.3	-4.8	2.3	-12.4	-38.0	-4.3	61.6	20.9	2.0	23.1	10.6	
	% growth re. one year ago	9.3	21.6	35.8	13.0	-13.6	-47.1	-46.8	-16.0	15.9	90.7	145.3	67.8	
	Utilisation	in percent (%)	94.4	93.8	93.7	92.8	86.4	52.8	50.1	83.1	91.9	91.0	94.7	98.8

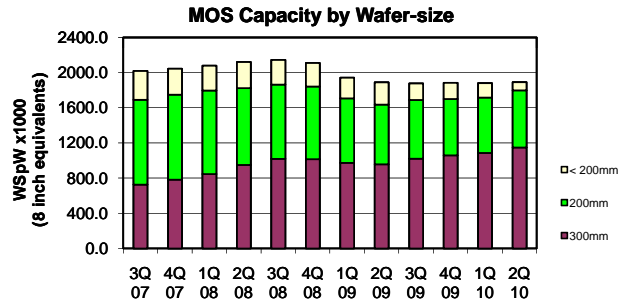
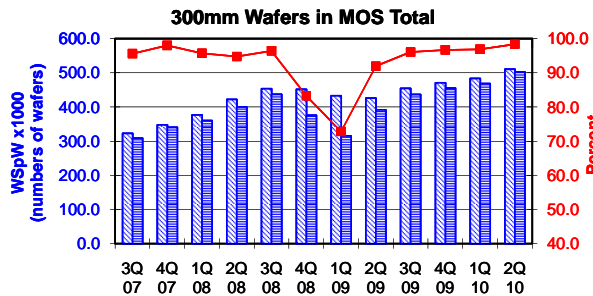
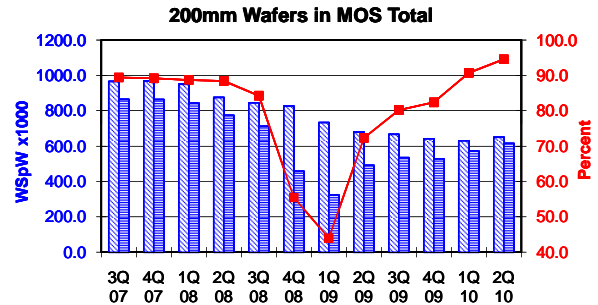
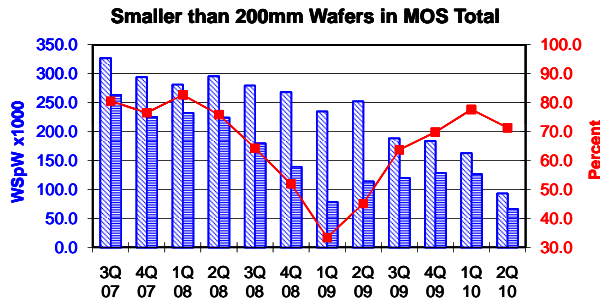
Yellow coloured cells reflect revised inputs Green bordered cells contain changes resulting from revised inputs

These statistics are based on data supplied by merchant SC manufacturers who together represent the majority of the world's SC production.

All MOS data are expressed in 8 inch equivalent wafers, except for the 300mm wafer data where annotated as "numbers of wafers".

WSpW = Wafer-Starts per Week.

Legends: Capacity WSpW Actual WSpW Utilisation of capacity in percent



			3Q 07	4Q 07	1Q 08	2Q 08	3Q 08	4Q 08	1Q 09	2Q 09	3Q 09	4Q 09	1Q 10	2Q 10
≤ 200mm Wafers in MOS Total	Capacity	Wafer-starts per week x 1000	326.8	294.2	281.2	295.7	279.4	268.1	234.8	252.3	188.1	183.9	162.8	92.9
		% growth re. preceding quarter	0.2	-10.0	-4.4	5.1	-5.5	-4.1	-12.4	7.4	-25.4	-2.3	-11.5	-42.9
		% growth re. one year ago	59.8	61.0	-7.3	-9.4	-14.5	-8.9	-16.5	-14.7	-32.7	-31.4	-30.7	-63.2
	Actual Wafer-Starts	Wafer-starts per week x1000	263.4	225.1	232.5	224.3	179.7	139.2	78.3	113.8	119.9	128.3	126.4	66.3
		% growth re. preceding quarter	-2.2	-14.5	3.3	-3.5	-19.9	-22.5	-43.7	45.3	5.3	7.0	-1.5	-47.6
		% growth re. one year ago	41.1	32.6	-4.0	-16.7	-31.8	-38.1	-66.3	-49.2	-33.3	-7.8	61.4	-41.8
	Utilisation	in percent (%)	80.6	76.5	82.7	75.9	64.3	51.9	33.4	45.1	63.7	69.8	77.7	71.3

			3Q 07	4Q 07	1Q 08	2Q 08	3Q 08	4Q 08	1Q 09	2Q 09	3Q 09	4Q 09	1Q 10	2Q 10
200mm wafers in MOS Total	Capacity	Wafer-starts per week x1000	966.2	968.7	950.5	875.2	844.7	826.0	733.5	679.7	666.8	640.4	630.1	650.4
		% growth re. preceding quarter	1.1	0.3	-1.9	-7.9	-3.5	-2.2	-11.2	-7.3	-1.9	-4.0	-1.6	3.2
		% growth re. one year ago	-7.3	-8.8	-0.1	-8.4	-12.6	-14.7	-22.8	-22.3	-21.1	-22.5	-14.1	-4.3
	Actual Wafer-Starts	Wafer-starts per week x1000	864.0	863.9	843.1	774.1	711.9	458.1	322.6	491.4	534.8	527.6	571.8	615.2
		% growth re. preceding quarter	1.6	0.0	-2.4	-8.2	-8.0	-35.7	-29.6	52.3	8.8	-1.3	8.4	7.6
		% growth re. one year ago	-7.0	-6.9	1.0	-8.9	-17.6	-47.0	-61.7	-36.5	-24.9	15.2	77.2	25.2
	Utilisation	in percent (%)	89.4	89.2	88.7	88.4	84.3	55.5	44.0	72.3	80.2	82.4	90.7	94.6

			3Q 07	4Q 07	1Q 08	2Q 08	3Q 08	4Q 08	1Q 09	2Q 09	3Q 09	4Q 09	1Q 10	2Q 10
300mm wafers in MOS Total	Capacity	WSpW x 1000 expressed in 8 inch equivalent wafers	726.1	781.9	847.1	950.0	1020.4	1016.3	973.8	958.1	1022.2	1059.8	1087.7	1149.3
		WSpW x 1000 expressed in numbers of wafers	322.7	347.5	376.5	422.2	453.5	451.7	432.8	425.8	454.3	471.0	483.4	510.8
		% growth re. preceding quarter	18.3	7.7	8.3	12.1	7.4	-0.4	-4.2	-1.6	6.7	3.7	2.6	5.7
	Actual Wafer-Starts	WSpW x 1000 expressed in 8 inch equivalent wafers	694.4	766.4	810.9	900.2	983.9	845.8	709.0	880.9	982.1	1024.9	1053.9	1130.6
		WSpW x 1000 expressed in numbers of wafers	308.6	340.6	360.4	400.1	437.3	375.9	315.1	391.5	436.5	455.5	468.4	502.5
		% growth re. preceding quarter	19.5	10.4	5.8	11.0	9.3	-14.0	-16.2	24.2	11.5	4.4	2.8	7.3
	Utilisation	% growth re. one year ago	65.7	62.6	64.9	54.9	41.7	10.4	-12.6	-2.1	-0.2	21.2	48.7	28.4
		in percent (%)	95.6	98.0	95.7	94.8	96.4	83.2	72.8	91.9	96.1	96.7	96.9	98.4

Yellow coloured cells reflect revised inputs Green bordered cells contain changes resulting from revised inputs

These statistics are based on data supplied by merchant SC manufacturers who together represent the majority of the world's SC production.