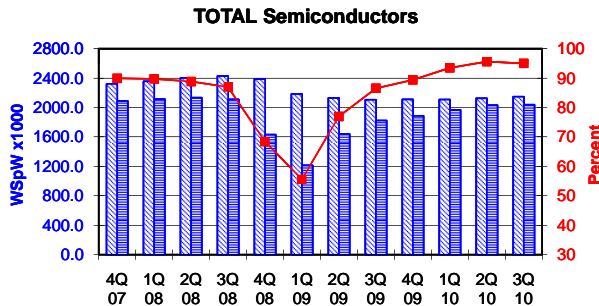
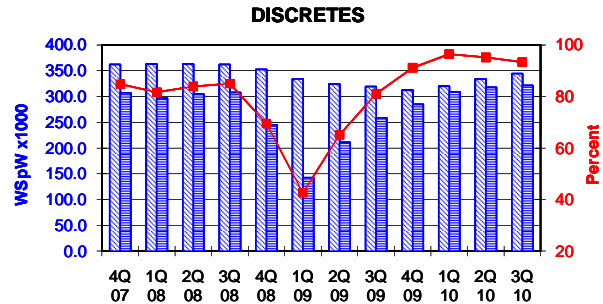
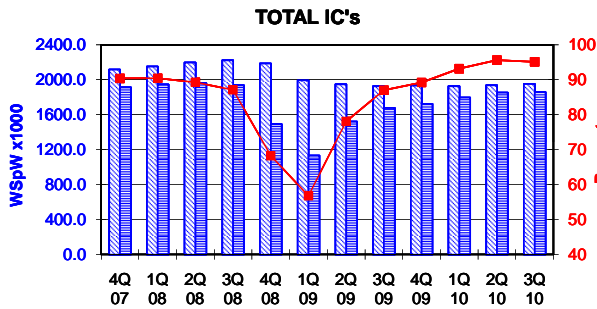


TOTAL IC's and TOTAL Semiconductors data are expressed in 8 inch equivalent wafers. DISCRETES data are expressed in 6 inch equivalent wafers. "TOTAL IC's" include Bipolar data, which were converted for this purpose from 5 inch to 8 inch equivalent wafers by the factor 0.391. "TOTAL Semiconductors" include DISCRETES data, which were converted for this purpose from 6 inch to 8 inch equivalent wafers by the factor 0.563.

WSpW = Wafer-Starts per Week.

Legends : Capacity WSpW Actual WSpW Utilisation of capacity in percent



		4Q 07	1Q 08	2Q 08	3Q 08	4Q 08	1Q 09	2Q 09	3Q 09	4Q 09	1Q 10	2Q 10	3Q 10	
TOTAL IC's	Capacity	Wafer-starts per week x 1000	2117.9	2151.9	2197.8	2223.1	2187.2	1995.0	1947.9	1926.8	1933.2	1926.9	1938.0	1953.0
		% growth re. preceding quarter	1.2	1.6	2.1	1.2	-1.6	-8.8	-2.4	-1.1	0.3	-0.3	0.6	0.8
		% growth re. one year ago	12.4	15.0	11.5	6.2	3.3	-7.3	-11.4	-13.3	-11.6	-3.4	-0.5	1.4
	Actual Wafer-Starts	Wafer-starts per week x 1000	1914.5	1946.6	1962.1	1937.0	1493.2	1133.3	1521.1	1676.9	1724.8	1795.7	1853.3	1858.3
		% growth re. preceding quarter	1.8	1.7	0.8	-1.3	-22.9	-24.1	34.2	10.2	2.9	4.1	3.2	0.3
		% growth re. one year ago	17.6	19.4	11.5	3.0	-22.0	-41.8	-22.5	-13.4	15.5	58.5	21.8	10.8
Utilisation	in percent (%)	90.4	90.5	89.3	87.1	68.3	56.8	78.1	87.0	89.2	93.2	95.6	95.2	

		4Q 07	1Q 08	2Q 08	3Q 08	4Q 08	1Q 09	2Q 09	3Q 09	4Q 09	1Q 10	2Q 10	3Q 10	
DISCRETES (6 inch equivs.)	Capacity	Wafer-starts per week x1000	362.0	363.0	362.9	362.1	352.4	334.2	324.1	319.1	312.2	320.2	333.7	344.4
		% growth re. preceding quarter	1.9	0.3	0.0	-0.2	-2.7	-5.2	-3.0	-1.5	-2.2	2.6	4.2	3.2
		% growth re. one year ago	n.a.	7.2	1.0	1.9	-2.7	-7.9	-10.7	-11.9	-11.4	-4.2	3.0	7.9
	Actual Wafer-Starts	Wafer-starts per week x1000	307.1	296.4	304.5	307.8	244.8	142.4	211.1	258.5	284.7	308.8	317.6	321.4
		% growth re. preceding quarter	0.8	-3.5	2.7	1.1	-20.5	-41.8	48.2	22.5	10.1	8.5	2.8	1.2
		% growth re. one year ago	n.a.	-1.4	-2.3	1.1	-20.3	-52.0	-30.7	-16.0	16.3	116.9	50.5	24.3
Utilisation	in percent (%)	84.8	81.7	83.9	85.0	69.5	42.6	65.1	81.0	91.2	96.4	95.2	93.3	

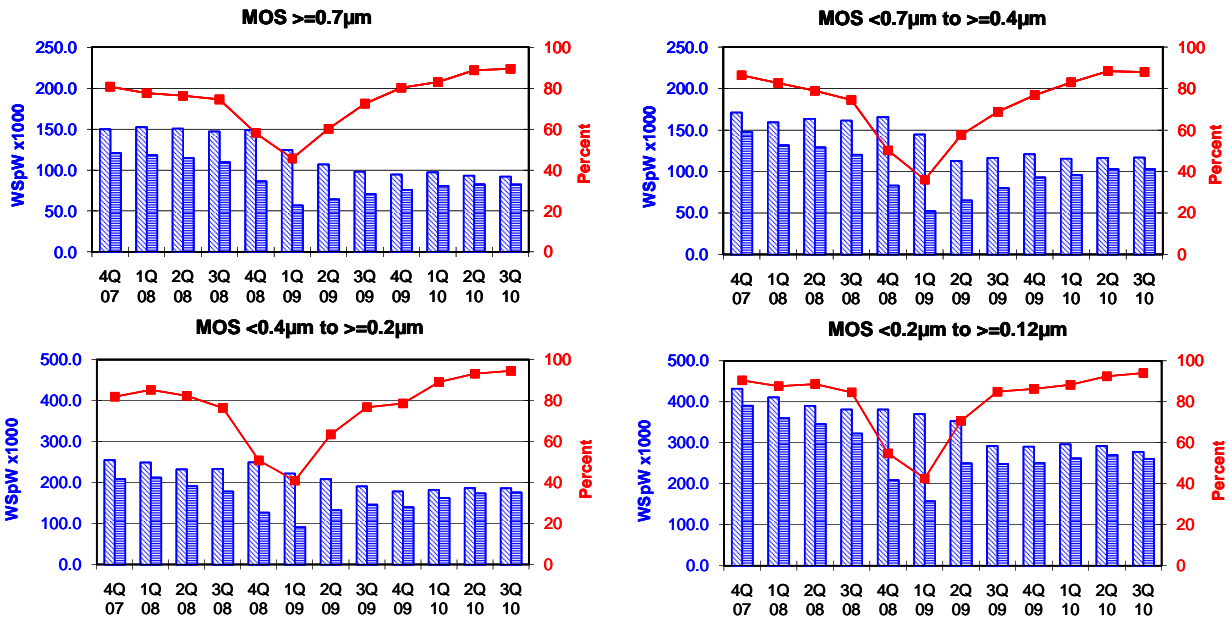
		4Q 07	1Q 08	2Q 08	3Q 08	4Q 08	1Q 09	2Q 09	3Q 09	4Q 09	1Q 10	2Q 10	3Q 10	
TOTAL Semiconductors	Capacity	Wafer-starts per week x1000	2321.7	2356.3	2402.1	2427.0	2385.6	2183.2	2130.4	2106.4	2109.0	2107.1	2125.9	2146.9
		% growth re. preceding quarter	1.3	1.5	1.9	1.0	-1.7	-8.5	-2.4	-1.1	0.1	-0.1	0.9	1.0
		% growth re. one year ago	n.a.	14.2	10.5	5.9	2.8	-7.3	-11.3	-13.2	-11.6	-3.5	-0.2	1.9
	Actual Wafer-Starts	Wafer-starts per week x1000	2087.4	2113.5	2133.6	2110.3	1631.0	1213.5	1639.9	1822.4	1885.1	1969.6	2032.1	2039.3
		% growth re. preceding quarter	1.7	1.2	1.0	-1.1	-22.7	-25.6	35.1	11.1	3.4	4.5	3.2	0.4
		% growth re. one year ago	n.a.	17.5	10.2	2.8	-21.9	-42.6	-23.1	-13.6	15.6	62.3	23.9	11.9
Utilisation	in percent (%)	89.9	89.7	88.8	87.0	68.4	55.6	77.0	86.5	89.4	93.5	95.6	95.0	

These statistics are based on data supplied by merchant SC manufacturers who together represent the majority of the world's SC production.

All MOS data are expressed in 8 inch equivalent wafers.

WSpW = Wafer-Starts per Week.

Legends : Capacity WSpW Actual WSpW Utilisation of capacity in percent



		4Q 07	1Q 08	2Q 08	3Q 08	4Q 08	1Q 09	2Q 09	3Q 09	4Q 09	1Q 10	2Q 10	3Q 10	
MOS $\geq 0.7\mu\text{m}$	Capacity	Wafer-starts per week x1000	149.8	152.2	150.5	147.0	148.7	124.3	106.7	97.9	94.5	97.2	93.0	
		% growth re. preceding quarter	0.8	1.6	-1.1	-2.3	1.2	-16.4	-14.2	-8.2	-3.5	2.9	-4.3	-1.1
		% growth re. one year ago	-12.8	2.3	-0.5	-1.3	-0.7	-18.3	-29.1	-33.4	-36.4	-21.8	-12.8	-6.0
	Actual Wafer-Starts	Wafer-starts per week x1000	120.9	118.0	114.8	109.5	86.3	56.7	64.2	70.9	75.8	80.6	82.5	82.3
		% growth re. preceding quarter	-2.1	-2.4	-2.7	-4.6	-21.2	-34.3	13.2	10.4	6.9	6.3	2.4	-0.2
		% growth re. one year ago	-13.8	1.7	-7.9	-11.3	-28.6	-51.9	-44.1	-35.3	-12.2	42.2	28.5	16.1
Utilisation	in percent (%)	80.7	77.5	76.3	74.5	58.0	45.6	60.2	72.4	80.2	82.9	88.7	89.5	

		4Q 07	1Q 08	2Q 08	3Q 08	4Q 08	1Q 09	2Q 09	3Q 09	4Q 09	1Q 10	2Q 10	3Q 10	
MOS $< 0.7\mu\text{m}$ to $\geq 0.4\mu\text{m}$	Capacity	Wafer-starts per week x1000	170.9	159.1	163.4	161.2	165.6	144.6	112.7	116.4	120.8	115.3	116.4	116.8
		% growth re. preceding quarter	-1.7	-6.9	2.7	-1.3	2.7	-12.7	-22.1	3.3	3.8	-4.6	1.0	0.3
		% growth re. one year ago	-6.8	6.4	-6.9	-7.2	-3.1	-9.1	-31.0	-27.8	-27.1	-20.3	3.3	0.3
	Actual Wafer-Starts	Wafer-starts per week x1000	147.6	131.5	129.0	120.1	83.0	52.1	65.0	80.1	92.8	95.7	102.9	102.8
		% growth re. preceding quarter	-3.3	-10.9	-1.9	-6.9	-30.9	-37.2	24.8	23.2	15.9	3.1	7.5	-0.1
		% growth re. one year ago	-4.7	6.9	-15.4	-21.3	-43.8	-60.4	-49.6	-33.3	11.8	83.7	58.3	28.3
Utilisation	in percent (%)	86.4	82.7	78.9	74.5	50.1	36.0	57.7	68.8	76.8	83.0	88.4	88.0	

		4Q 07	1Q 08	2Q 08	3Q 08	4Q 08	1Q 09	2Q 09	3Q 09	4Q 09	1Q 10	2Q 10	3Q 10	
MOS $< 0.4\mu\text{m}$ to $\geq 0.2\mu\text{m}$	Capacity	Wafer-starts per week x1000	254.6	248.8	231.9	233.3	249.2	222.0	208.4	190.6	178.1	182.2	186.4	185.9
		% growth re. preceding quarter	-0.3	-2.3	-6.8	0.6	6.8	-10.9	-6.1	-8.5	-6.6	2.3	2.3	-0.3
		% growth re. one year ago	-16.4	-1.2	-10.6	-8.7	-2.1	-10.8	-10.1	-18.3	-28.5	-17.9	-10.6	-2.5
	Actual Wafer-Starts	Wafer-starts per week x1000	208.5	212.1	190.9	178.3	126.5	90.9	132.3	146.3	140.0	162.3	173.6	175.7
		% growth re. preceding quarter	-3.5	1.7	-10.0	-6.6	-29.1	-28.1	45.5	10.6	-4.3	15.9	7.0	1.2
		% growth re. one year ago	-17.6	4.4	-12.6	-17.5	-39.3	-57.1	-30.7	-17.9	10.7	78.5	31.2	20.1
Utilisation	in percent (%)	81.9	85.2	82.3	76.4	50.8	40.9	63.5	76.8	78.6	89.1	93.1	94.5	

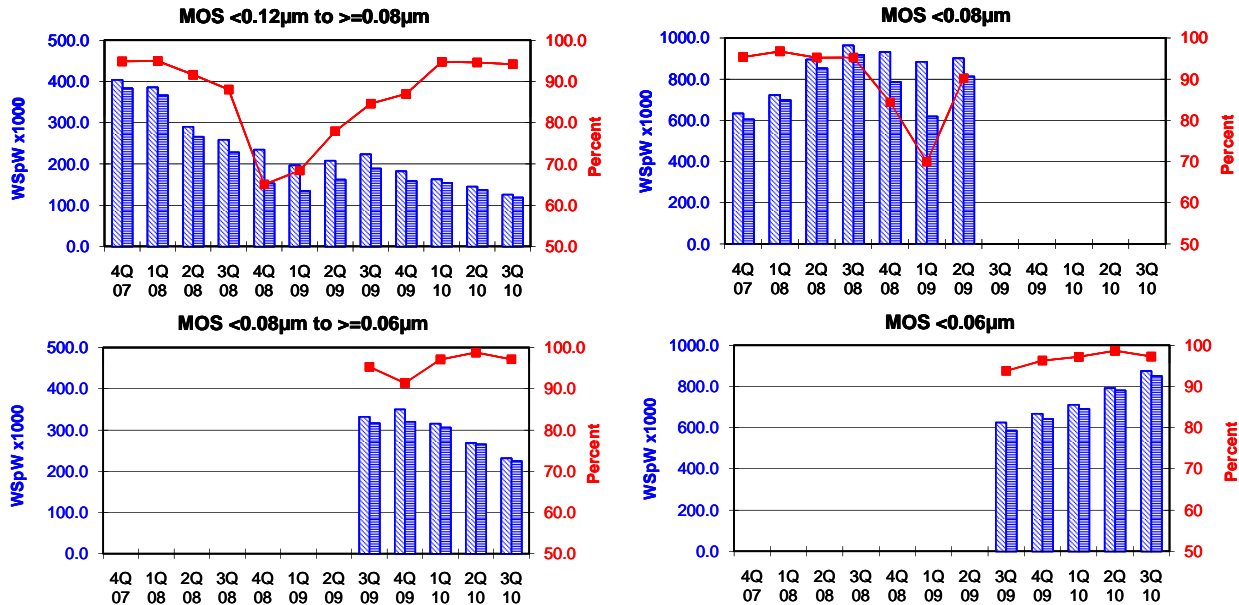
		4Q 07	1Q 08	2Q 08	3Q 08	4Q 08	1Q 09	2Q 09	3Q 09	4Q 09	1Q 10	2Q 10	3Q 10	
MOS $< 0.2\mu\text{m}$ to $\geq 0.12\mu\text{m}$	Capacity	Wafer-starts per week x1000	432.0	410.8	390.3	381.1	381.1	370.3	353.3	292.2	290.8	296.7	292.2	277.6
		% growth re. preceding quarter	2.6	-4.9	-5.0	-2.4	0.0	-2.8	-4.6	-17.3	-0.5	2.0	-1.5	-5.0
		% growth re. one year ago	-2.3	-2.0	-5.7	-9.5	-11.8	-9.9	-9.5	-23.3	-23.7	-19.9	-17.3	-5.0
	Actual Wafer-Starts	Wafer-starts per week x1000	390.8	360.0	346.2	322.5	208.9	157.6	249.9	248.3	251.1	262.1	270.2	261.1
		% growth re. preceding quarter	4.7	-7.9	-3.8	-6.8	-35.2	-24.6	58.6	-0.6	1.1	4.4	3.1	-3.4
		% growth re. one year ago	5.9	0.6	-6.7	-13.6	-46.5	-56.2	-27.8	-23.0	20.2	66.3	8.1	5.2
Utilisation	in percent (%)	90.5	87.6	88.7	84.6	54.8	42.6	70.7	85.0	86.3	88.3	92.5	94.1	

These statistics are based on data supplied by merchant SC manufacturers who together represent the majority of the world's SC production.

All MOS data are expressed in 8 inch equivalent wafers.

WSpW = Wafer-Starts per Week.

Legends : Capacity WSpW Actual WSpW Utilisation of capacity in percent



		4Q 07	1Q 08	2Q 08	3Q 08	4Q 08	1Q 09	2Q 09	3Q 09	4Q 09	1Q 10	2Q 10	3Q 10	
MOS <0.12µm to ≥0.08µm	Capacity	Wafer-starts per week x1000	404.1	385.8	290.1	258.8	234.7	196.6	208.0	223.3	182.3	162.8	144.9	125.7
		% growth re. preceding quarter	0.2	-4.5	-24.8	-10.8	-9.3	-16.2	5.8	7.4	-18.4	-10.7	-11.0	-13.3
		% growth re. one year ago	n.a.	n.a.	n.a.	-35.8	-41.9	-49.0	-28.3	-13.7	-22.3	-17.2	-30.3	-43.7
	Actual Wafer-Starts	Wafer-starts per week x1000	383.4	366.4	265.9	227.9	152.6	134.5	162.1	189.0	158.6	154.3	137.1	118.4
		% growth re. preceding quarter	0.2	-4.4	-27.4	-14.3	-33.0	-11.9	20.5	16.6	-16.1	-2.7	-11.1	-13.6
		% growth re. one year ago	n.a.	n.a.	n.a.	-40.4	-60.2	-63.3	-39.0	-17.1	3.9	14.7	-15.4	-37.4
Utilisation	in percent (%)	94.9	95.0	91.7	88.1	65.0	68.4	77.9	84.6	87.0	94.8	94.6	94.2	

		4Q 07	1Q 08	2Q 08	3Q 08	4Q 08	1Q 09	2Q 09	3Q 09	4Q 09	1Q 10	2Q 10	3Q 10
MOS <0.08µm	Capacity	Wafer-starts per week x1000	633.4	722.1	894.6	963.1	931.1	884.3	900.9				
		% growth re. preceding quarter	2.7	14.0	23.9	7.7	-3.3	-5.0	1.9				
		% growth re. one year ago	n.a.	n.a.	n.a.	56.1	47.0	22.5	0.7				
	Actual Wafer-Starts	Wafer-starts per week x1000	604.1	698.5	851.8	917.2	785.8	618.1	812.6				
		% growth re. preceding quarter	5.3	15.6	21.9	7.7	-14.3	-21.3	31.5				
		% growth re. one year ago	n.a.	n.a.	n.a.	59.8	30.1	-11.5	-4.6				
Utilisation	in percent (%)	95.4	96.7	95.2	95.2	84.4	69.9	90.2					

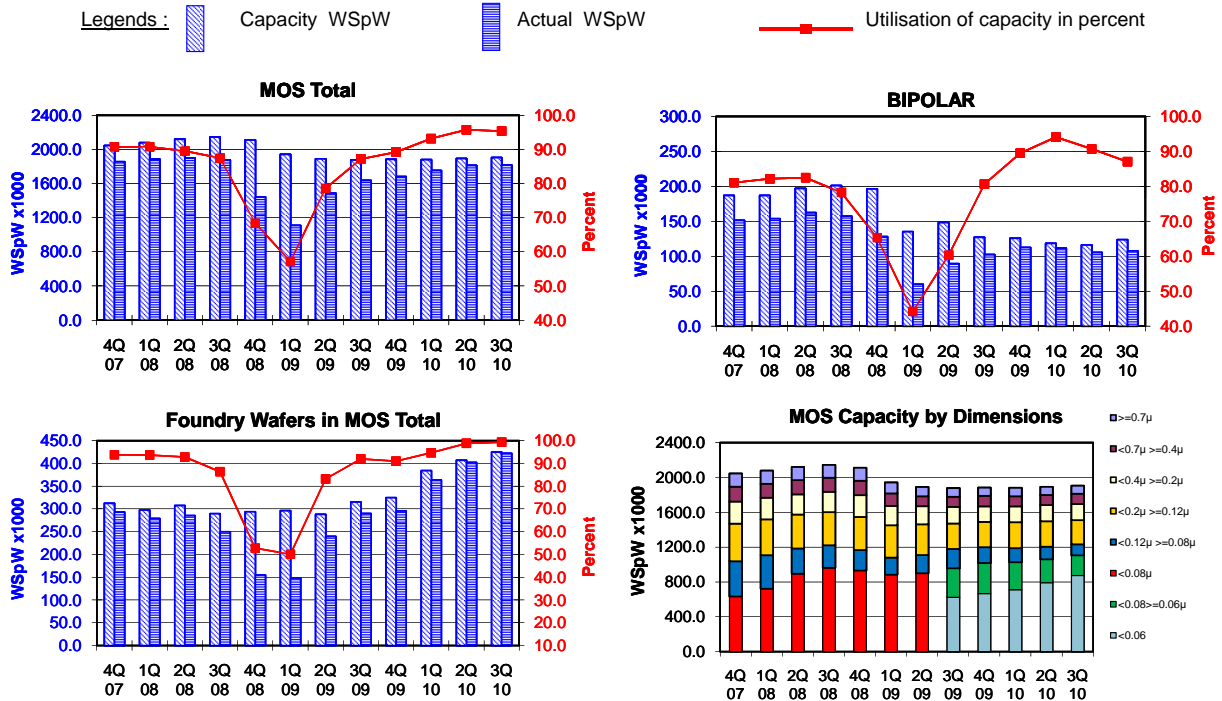
		4Q 07	1Q 08	2Q 08	3Q 08	4Q 08	1Q 09	2Q 09	3Q 09	4Q 09	1Q 10	2Q 10	3Q 10
MOS <0.08µm to ≥0.06µm	Capacity	Wafer-starts per week x1000							332.1	350.1	315.3	268.5	231.6
		% growth re. preceding quarter								5.4	-9.9	-14.8	-13.7
		% growth re. one year ago								n.a.	n.a.	n.a.	-30.3
	Actual Wafer-Starts	Wafer-starts per week x1000							316.5	320.0	306.2	265.3	225.0
		% growth re. preceding quarter								1.1	-4.3	-13.4	-15.2
		% growth re. one year ago								n.a.	n.a.	n.a.	-28.9
Utilisation	in percent (%)							95.3	91.4	97.1	98.8	97.2	

		4Q 07	1Q 08	2Q 08	3Q 08	4Q 08	1Q 09	2Q 09	3Q 09	4Q 09	1Q 10	2Q 10	3Q 10
MOS <0.06µm	Capacity	Wafer-starts per week x1000							624.6	667.4	711.0	791.2	875.0
		% growth re. preceding quarter								6.9	6.5	11.3	10.6
		% growth re. one year ago								n.a.	n.a.	n.a.	40.1
	Actual Wafer-Starts	Wafer-starts per week x1000							585.7	642.5	690.9	780.5	850.9
		% growth re. preceding quarter								9.7	7.5	13.0	9.0
		% growth re. one year ago								n.a.	n.a.	n.a.	45.3
Utilisation	in percent (%)							93.8	96.3	97.2	98.6	97.2	

These statistics are based on data supplied by merchant SC manufacturers who together represent the majority of the world's SC production.

All MOS data are expressed in 8 inch equivalent wafers. Bipolar data are expressed in 5 inch equivalent wafers.

WSPw = Wafer-Starts per Week.



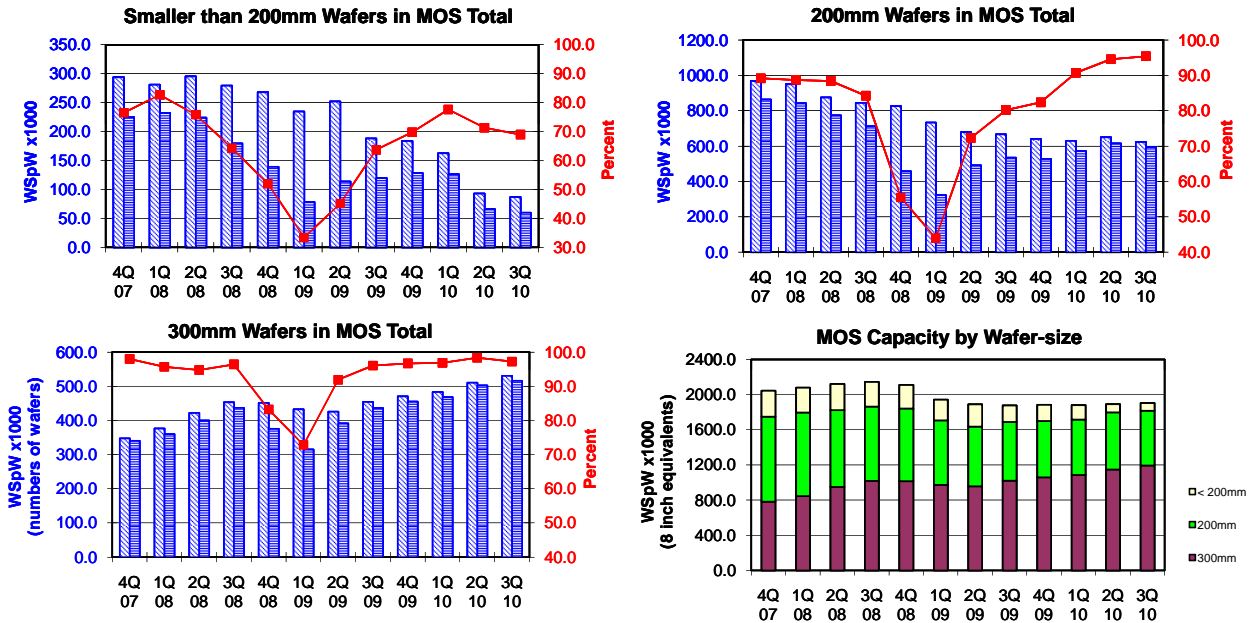
			4Q 07	1Q 08	2Q 08	3Q 08	4Q 08	1Q 09	2Q 09	3Q 09	4Q 09	1Q 10	2Q 10	3Q 10
MOS Total	Capacity	Wafer-starts per week x 1000	2044.8	2078.8	2120.8	2144.5	2110.4	1942.1	1890.0	1877.1	1884.0	1880.5	1892.6	1904.6
		% growth re. preceding quarter	1.3	1.7	2.0	1.1	-1.6	-8.0	-2.7	-0.7	0.4	-0.2	0.6	0.6
	Actual Wafer-Starts	Wafer-starts per week x1000	1855.3	1886.5	1898.6	1875.5	1443.1	1109.9	1486.1	1636.8	1680.8	1752.1	1812.1	1816.2
		% growth re. preceding quarter	1.8	1.7	0.6	-1.2	-23.1	-23.1	33.9	10.1	2.7	4.2	3.4	0.2
Utilisation		in percent (%)	90.7	90.7	89.5	87.5	68.4	57.1	78.6	87.2	89.2	93.2	95.7	95.4
BIPOLAR (5 inch equivs.)	Capacity	Wafer-starts per week x1000	186.9	187.0	197.0	201.1	196.3	135.3	148.2	127.1	125.8	118.6	116.2	123.8
		% growth re. preceding quarter	-0.7	0.1	5.3	2.1	-2.4	-31.1	9.5	-14.2	-1.0	-5.7	-2.0	6.5
	Actual Wafer-Starts	Wafer-starts per week x1000	151.5	153.7	162.5	157.4	128.2	59.8	89.4	102.5	112.6	111.6	105.4	107.8
		% growth re. preceding quarter	-0.5	1.5	5.7	-3.1	-18.6	-53.4	49.5	14.7	9.9	-0.9	-5.6	2.3
Utilisation		in percent (%)	81.1	82.2	82.5	78.3	65.3	44.2	60.3	80.6	89.5	94.1	90.7	87.1
Foundry Wafers in MOS Total	Capacity	Wafer-starts per week x1000	312.5	297.7	307.5	289.5	293.7	296.1	288.3	315.2	324.8	384.2	407.0	424.9
		% growth re. preceding quarter	1.9	-4.7	3.3	-5.9	1.5	0.8	-2.6	9.3	3.0	18.3	5.9	4.4
	Actual Wafer-Starts	Wafer-starts per week x1000	293.1	278.9	285.3	250.0	155.0	148.3	239.7	289.8	295.6	363.8	402.2	422.0
		% growth re. preceding quarter	1.3	-4.8	2.3	-12.4	-38.0	-4.3	61.6	20.9	2.0	23.1	10.6	4.9
Utilisation		in percent (%)	93.8	93.7	92.8	86.4	52.8	50.1	83.1	91.9	91.0	94.7	98.8	99.3

These statistics are based on data supplied by merchant SC manufacturers who together represent the majority of the world's SC production.

All MOS data are expressed in 8 inch equivalent wafers, except for the 300mm wafer data where annotated as "numbers of wafers".

WSpW = Wafer-Starts per Week.

Legends: Capacity WSpW Actual WSpW Utilisation of capacity in percent



		4Q 07	1Q 08	2Q 08	3Q 08	4Q 08	1Q 09	2Q 09	3Q 09	4Q 09	1Q 10	2Q 10	3Q 10	
< 200mm Wafers in MOS Total	Capacity	Wafer-starts per week x 1000	294.2	281.2	295.7	279.4	268.1	234.8	252.3	188.1	183.9	162.8	92.9	86.9
		% growth re. preceding quarter	-10.0	-4.4	5.1	-5.5	-4.1	-12.4	7.4	-25.4	-2.3	-11.5	-42.9	-6.5
		% growth re. one year ago	61.0	-7.3	-9.4	-14.5	-8.9	-16.5	-14.7	-32.7	-31.4	-30.7	-63.2	-53.8
	Actual Wafer-Starts	Wafer-starts per week x1000	225.1	232.5	224.3	179.7	139.2	78.3	113.8	119.9	128.3	126.4	66.3	59.9
		% growth re. preceding quarter	-14.5	3.3	-3.5	-19.9	-22.5	-43.7	45.3	5.3	7.0	-1.5	-47.6	-9.6
		% growth re. one year ago	32.6	-4.0	-16.7	-31.8	-38.1	-66.3	-49.2	-33.3	-7.8	61.4	-41.8	-50.0
Utilisation	in percent (%)	76.5	82.7	75.9	64.3	51.9	33.4	45.1	63.7	69.8	77.7	71.3	69.0	

		4Q 07	1Q 08	2Q 08	3Q 08	4Q 08	1Q 09	2Q 09	3Q 09	4Q 09	1Q 10	2Q 10	3Q 10	
200mm wafers in MOS Total	Capacity	Wafer-starts per week x1000	968.7	950.5	875.2	844.7	826.0	733.5	679.7	666.8	640.4	630.1	650.4	623.2
		% growth re. preceding quarter	0.3	-1.9	-7.9	-3.5	-2.2	-11.2	-7.3	-1.9	-4.0	-1.6	3.2	-4.2
		% growth re. one year ago	-8.8	-0.1	-8.4	-12.8	-14.7	-22.8	-22.3	-21.1	-22.5	-14.1	-4.3	-6.5
	Actual Wafer-Starts	Wafer-starts per week x1000	863.9	843.1	774.1	711.9	458.1	322.6	491.4	534.8	527.6	571.8	615.2	594.6
		% growth re. preceding quarter	0.0	-2.4	-8.2	-8.0	-35.7	-29.6	52.3	8.8	1.3	8.4	7.6	-3.3
		% growth re. one year ago	-6.9	1.0	-8.9	-17.6	-47.0	-61.7	-36.5	-24.9	-15.2	77.2	25.2	11.2
Utilisation	in percent (%)	89.2	88.7	88.4	84.3	55.5	44.0	72.3	80.2	82.4	90.7	94.6	95.4	

		4Q 07	1Q 08	2Q 08	3Q 08	4Q 08	1Q 09	2Q 09	3Q 09	4Q 09	1Q 10	2Q 10	3Q 10	
300mm wafers in MOS Total	Capacity	WSpW x 1000 expressed in 8 inch equivalent wafers	781.9	847.1	950.0	1020.4	1016.3	973.8	958.1	1022.2	1059.8	1087.7	1149.3	1194.5
		WSpW x 1000 expressed in numbers of wafers	347.5	376.5	422.2	453.5	451.7	432.8	425.8	454.3	471.0	483.4	510.8	530.9
		% growth re. preceding quarter	7.7	8.3	12.1	7.4	-0.4	-4.2	-1.6	6.7	3.7	2.6	5.7	3.9
		% growth re. one year ago	41.0	56.9	54.8	40.5	30.0	15.0	0.9	0.2	4.3	11.7	20.0	16.9
	Actual Wafer-Starts	WSpW x 1000 expressed in 8 inch equivalent wafers	766.4	810.9	900.2	983.9	845.8	709.0	880.9	982.1	1024.9	1053.9	1130.6	1161.7
		WSpW x 1000 expressed in numbers of wafers	340.6	360.4	400.1	437.3	375.9	315.1	391.5	436.5	455.5	468.4	502.5	516.3
		% growth re. preceding quarter	10.4	5.8	11.0	9.3	-14.0	-16.2	24.2	11.5	4.4	2.8	7.3	2.7
		% growth re. one year ago	62.6	64.9	54.9	41.7	10.4	-12.6	-2.1	-0.2	21.2	48.7	28.4	18.3
	Utilisation	in percent (%)	98.0	95.7	94.8	96.4	83.2	72.8	91.9	96.1	96.7	96.9	98.4	97.2

These statistics are based on data supplied by merchant SC manufacturers who together represent the majority of the world's SC production.