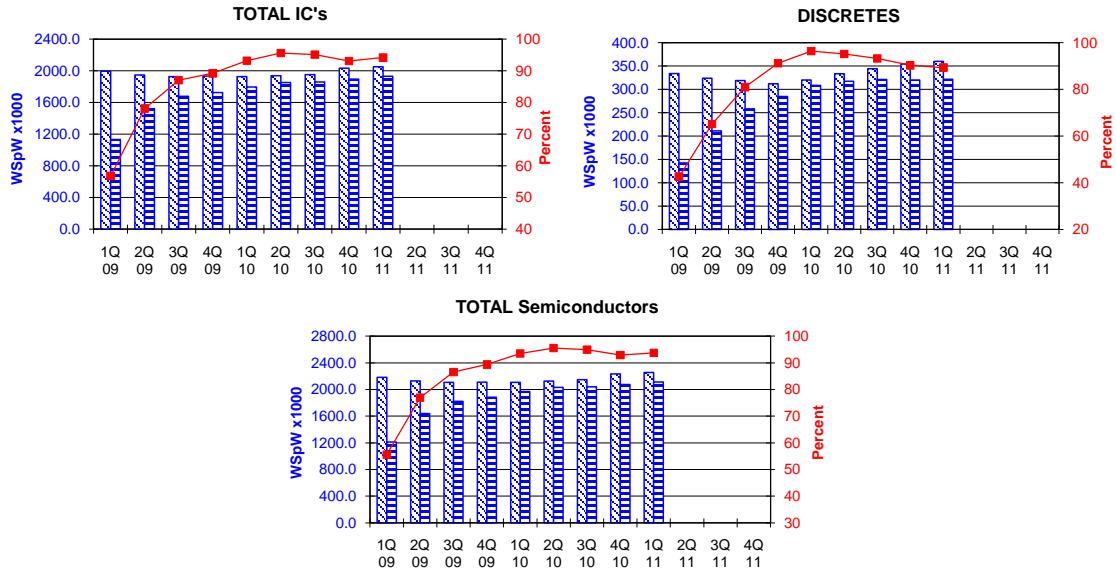


TOTAL IC's and TOTAL Semiconductors data are expressed in 8 inch equivalent wafers. DISCRETES data are expressed in 6 inch equivalent wafers. "TOTAL IC's" include Bipolar data, which were converted for this purpose from 5 inch to 8 inch equivalent wafers by the factor 0.391. "TOTAL Semiconductors" include DISCRETES data, which were converted for this purpose from 6 inch to 8 inch equivalent wafers by the factor 0.563.

WSpW = Wafer-Starts per Week.

Legends: Capacity WSpW Actual WSpW Utilisation of capacity in percent



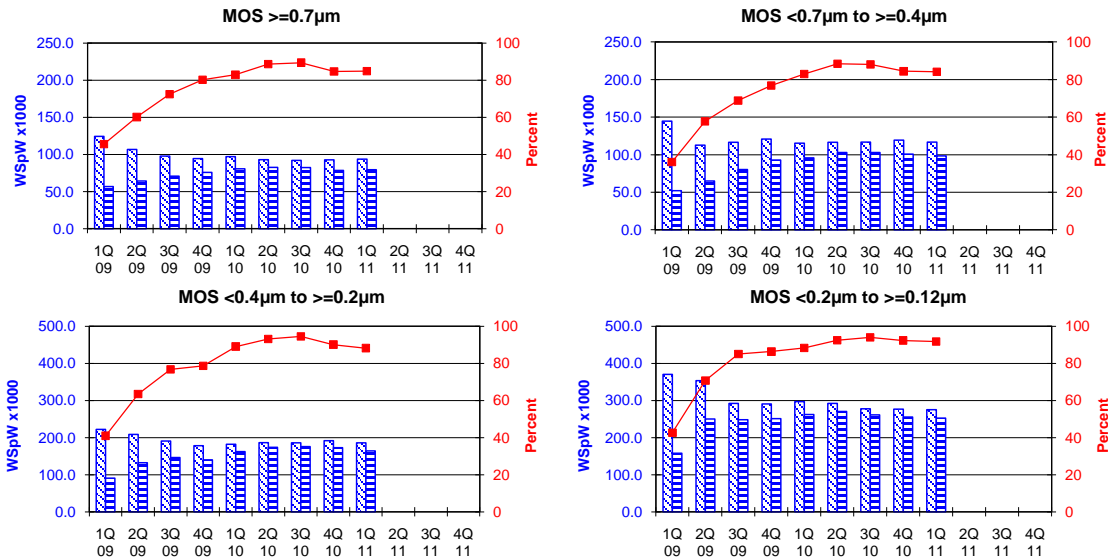
		1Q 09	2Q 09	3Q 09	4Q 09	1Q 10	2Q 10	3Q 10	4Q 10	1Q 11				
TOTAL IC's	Capacity	Wafer-starts per week x 1000	1995.0	1947.9	1926.8	1933.2	1926.9	1938.0	1953.0	2034.0	2051.7			
		% growth re. preceding quarter	-8.8	-2.4	-1.1	0.3	-0.3	0.6	0.8	4.1	0.9			
		% growth re. one year ago	-7.3	-11.4	-13.3	-11.6	-3.4	-0.5	1.4	5.2	6.5			
	Actual Wafer-Starts	Wafer-starts per week x 1000	1133.3	1521.1	1676.9	1724.8	1795.7	1853.3	1858.3	1894.2	1932.0			
		% growth re. preceding quarter	-24.1	34.2	10.2	2.9	4.1	3.2	0.3	1.9	2.0			
	% growth re. one year ago	-41.8	-22.5	-13.4	15.5	58.5	21.8	10.8	9.8	7.6				
	Utilisation in percent (%)	56.8	78.1	87.0	89.2	93.2	95.6	95.2	93.1	94.2				
DISCRETES (6 inch equivs.)	Capacity	Wafer-starts per week x1000	334.2	324.1	319.1	312.2	320.2	333.7	344.4	354.4	360.2			
		% growth re. preceding quarter	-5.2	-3.0	-1.5	-2.2	2.6	4.2	3.2	2.9	1.6			
		% growth re. one year ago	-7.9	-10.7	-11.9	-11.4	-4.2	3.0	7.9	13.5	12.5			
	Actual Wafer-Starts	Wafer-starts per week x1000	142.4	211.1	258.5	284.7	308.8	317.6	321.4	320.1	321.9			
		% growth re. preceding quarter	-41.8	48.2	22.5	10.1	8.5	2.8	1.2	-0.4	0.5			
	% growth re. one year ago	-52.0	-30.7	-16.0	16.3	116.9	50.5	24.3	12.4	4.2				
	Utilisation in percent (%)	42.6	65.1	81.0	91.2	96.4	95.2	93.3	90.3	89.4				
TOTAL Semiconductors	Capacity	Wafer-starts per week x1000	2183.2	2130.4	2106.4	2109.0	2107.1	2125.9	2146.9	2233.5	2254.5			
		% growth re. preceding quarter	-8.5	-2.4	-1.1	0.1	-0.1	0.9	1.0	4.0	0.9			
		% growth re. one year ago	-7.3	-11.3	-13.2	-11.6	-3.5	-0.2	1.9	5.9	7.0			
	Actual Wafer-Starts	Wafer-starts per week x1000	1213.5	1639.9	1822.4	1885.1	1969.6	2032.1	2039.3	2074.4	2113.2			
		% growth re. preceding quarter	-25.6	35.1	11.1	3.4	4.5	3.2	0.4	1.7	1.9			
	% growth re. one year ago	-42.6	-23.1	-13.6	15.6	62.3	23.9	11.9	10.0	7.3				
	Utilisation in percent (%)	55.6	77.0	86.5	89.4	93.5	95.6	95.0	92.9	93.7				

These statistics are based on data supplied by merchant SC manufacturers who together represent the majority of the world's SC production. Note: This report includes estimated data.

All MOS data are expressed in 8 inch equivalent wafers.

WSpW = Wafer-Starts per Week.

Legends :  Capacity WSpW  Actual WSpW  Utilisation of capacity in percent



			1Q 09	2Q 09	3Q 09	4Q 09	1Q 10	2Q 10	3Q 10	4Q 10	1Q 11		
MOS >=0.7µm	Capacity	Wafer-starts per week x1000	124.3	106.7	97.9	94.5	97.2	93.0	92.0	92.7	93.7		
		% growth re. preceding quarter	-16.4	-14.2	-8.2	-3.5	2.9	-4.3	-1.1	0.7	1.1		
		% growth re. one year ago	-18.3	-29.1	-33.4	-36.4	-21.8	-12.8	-6.0	-1.9	-3.6		
	Actual Wafer-Starts	Wafer-starts per week x1000	56.7	64.2	70.9	75.8	80.6	82.5	82.3	78.5	79.5		
		% growth re. preceding quarter	-34.3	13.2	10.4	6.9	6.3	2.4	-0.2	-4.6	1.3		
% growth re. one year ago		-51.9	-44.1	-35.3	-12.2	42.2	28.5	16.1	3.5	-1.3			
Utilisation	in percent (%)	45.6	60.2	72.4	80.2	82.9	88.7	89.5	84.7	84.9			
MOS <0.7µm to >=0.4µm	Capacity	Wafer-starts per week x1000	144.6	112.7	116.4	120.8	115.3	116.4	116.8	119.4	116.8		
		% growth re. preceding quarter	-12.7	-22.1	3.3	3.8	-4.6	1.0	0.3	2.3	-2.2		
		% growth re. one year ago	-9.1	-31.0	-27.8	-27.1	-20.3	3.3	0.3	-1.1	1.3		
	Actual Wafer-Starts	Wafer-starts per week x1000	52.1	65.0	80.1	92.8	95.7	102.9	102.8	100.8	98.3		
		% growth re. preceding quarter	-37.2	24.8	23.2	15.9	3.1	7.5	-0.1	-1.9	-2.5		
% growth re. one year ago		-60.4	-49.6	-33.3	11.8	83.7	58.3	28.3	8.6	2.7			
Utilisation	in percent (%)	36.0	57.7	68.8	76.8	83.0	88.4	88.0	84.4	84.2			
MOS <0.4µm to >=0.2µm	Capacity	Wafer-starts per week x1000	222.0	208.4	190.6	178.1	182.2	186.4	185.9	191.8	185.8		
		% growth re. preceding quarter	-10.9	-6.1	-8.5	-6.6	2.3	2.3	-0.3	3.2	-3.1		
		% growth re. one year ago	-10.8	-10.1	-18.3	-28.5	-17.9	-10.6	-2.5	7.7	2.0		
	Actual Wafer-Starts	Wafer-starts per week x1000	90.9	132.3	146.3	140.0	162.3	173.6	175.7	172.8	163.9		
		% growth re. preceding quarter	-28.1	45.5	10.6	-4.3	15.9	7.0	1.2	-1.7	-5.2		
% growth re. one year ago		-57.1	-30.7	-17.9	10.7	78.5	31.2	20.1	23.4	1.0			
Utilisation	in percent (%)	40.9	63.5	76.8	78.6	89.1	93.1	94.5	90.1	88.2			
MOS <0.2µm to >=0.12µm	Capacity	Wafer-starts per week x1000	370.3	353.3	292.2	290.8	296.7	292.2	277.6	276.7	275.0		
		% growth re. preceding quarter	-2.8	-4.6	-17.3	-0.5	2.0	-1.5	-5.0	-0.3	-0.6		
		% growth re. one year ago	-9.9	-9.5	-23.3	-23.7	-19.9	-17.3	-5.0	-4.9	-7.3		
	Actual Wafer-Starts	Wafer-starts per week x1000	157.6	249.9	248.3	251.1	262.1	270.2	261.1	255.6	252.4		
		% growth re. preceding quarter	-24.6	58.6	-0.6	1.1	4.4	3.1	-3.4	-2.1	-1.2		
% growth re. one year ago		-56.2	-27.8	-23.0	20.2	66.3	8.1	5.2	1.8	-3.7			
Utilisation	in percent (%)	42.6	70.7	85.0	86.3	88.3	92.5	94.1	92.4	91.8			

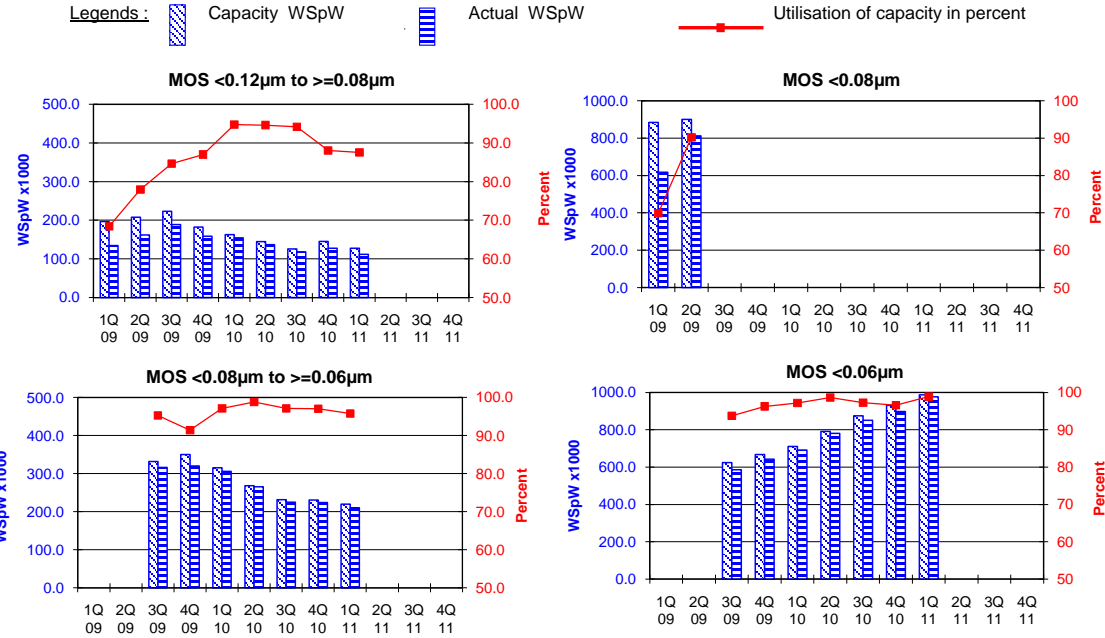
Yellow coloured cells reflect revised inputs Green bordered cells contain changes resulting from revised inputs

These statistics are based on data supplied by merchant SC manufacturers who together represent the majority of the world's SC production.
 Note: This report includes estimated data.

SEMICONDUCTOR INTERNATIONAL CAPACITY STATISTICS

All MOS data are expressed in 8 inch equivalent wafers.

WSpW = Wafer-Starts per Week.



MOS <0.12µm to >=0.08µm	Capacity	Wafer-starts per week x1000	196.6	208.0	223.3	182.3	162.8	144.9	125.7	145.2	127.8			
	Capacity	% growth re. preceding quarter	-16.2	5.8	7.4	-18.4	-10.7	-11.0	-13.3	15.5	-12.0			
		% growth re. one year ago	-49.0	-28.3	-13.7	-22.3	-17.2	-30.3	-43.7	-20.4	-21.5			
	Actual Wafer-Starts	Wafer-starts per week x1000	134.5	162.1	189.0	158.6	154.3	137.1	118.4	127.8	111.9			
		% growth re. preceding quarter	-11.9	20.5	16.6	-16.1	-2.7	-11.1	-13.6	7.9	-12.5			
Actual Wafer-Starts	% growth re. one year ago	-63.3	-39.0	-17.1	3.9	14.7	-15.4	-37.4	-19.4	-27.5				
	Utilisation	in percent (%)	68.4	77.9	84.6	87.0	94.8	94.6	94.2	88.0	87.5			

MOS <0.08µm	Capacity	Wafer-starts per week x1000	884.3	900.9										
	Capacity	% growth re. preceding quarter	-5.0	1.9										
		% growth re. one year ago	22.5	0.7										
	Actual Wafer-Starts	Wafer-starts per week x1000	618.1	812.6										
		% growth re. preceding quarter	-21.3	31.5										
Actual Wafer-Starts	% growth re. one year ago	-11.5	-4.6											
	Utilisation	in percent (%)	69.9	90.2										

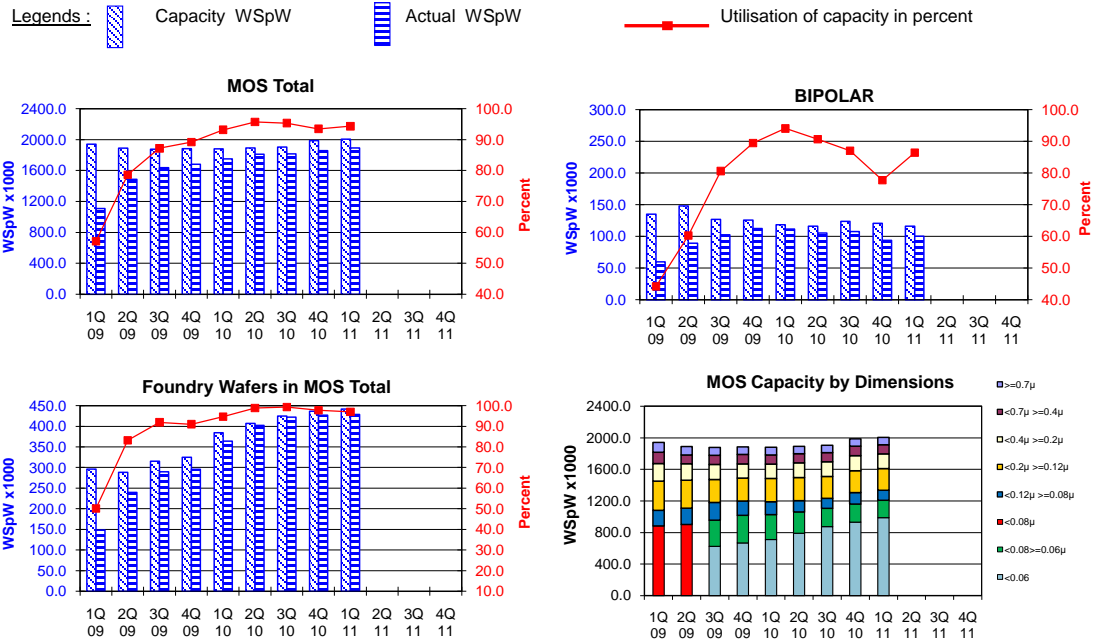
MOS <0.08µm to >=0.06µm	Capacity	Wafer-starts per week x1000			332.1	350.1	315.3	268.5	231.6	230.7	219.8			
	Capacity	% growth re. preceding quarter			5.4	-9.9	-14.8	-13.7	-0.4	-4.7				
		% growth re. one year ago			n.a.	n.a.	n.a.	-30.3	-34.1	n.a.				
	Actual Wafer-Starts	Wafer-starts per week x1000			316.5	320.0	306.2	265.3	225.0	223.9	210.5			
		% growth re. preceding quarter				1.1	-4.3	-13.4	-15.2	-0.5	-6.0			
Actual Wafer-Starts	% growth re. one year ago				n.a.	n.a.	n.a.	-28.9	-30.0	-31.3				
	Utilisation	in percent (%)			95.3	91.4	97.1	98.8	97.2	97.0	95.8			

MOS <0.06µm	Capacity	Wafer-starts per week x1000			624.6	667.4	711.0	791.2	875.0	930.3	987.5			
	Capacity	% growth re. preceding quarter				6.9	6.5	11.3	10.6	6.3	6.1			
		% growth re. one year ago				n.a.	n.a.	n.a.	40.1	39.4	n.a.			
	Actual Wafer-Starts	Wafer-starts per week x1000			585.7	642.5	690.9	780.5	850.9	898.2	976.2			
		% growth re. preceding quarter				9.7	7.5	13.0	9.0	5.6	8.7			
Actual Wafer-Starts	% growth re. one year ago				n.a.	n.a.	n.a.	45.3	39.8	41.3				
	Utilisation	in percent (%)			93.8	96.3	97.2	98.6	97.2	96.5	98.9			

These statistics are based on data supplied by merchant SC manufacturers who together represent the majority of the world's SC production.
Note: This report includes estimated data.

All MOS data are expressed in 8 inch equivalent wafers. Bipolar data are expressed in 5 inch equivalent wafers.

WSpW = Wafer-Starts per Week.



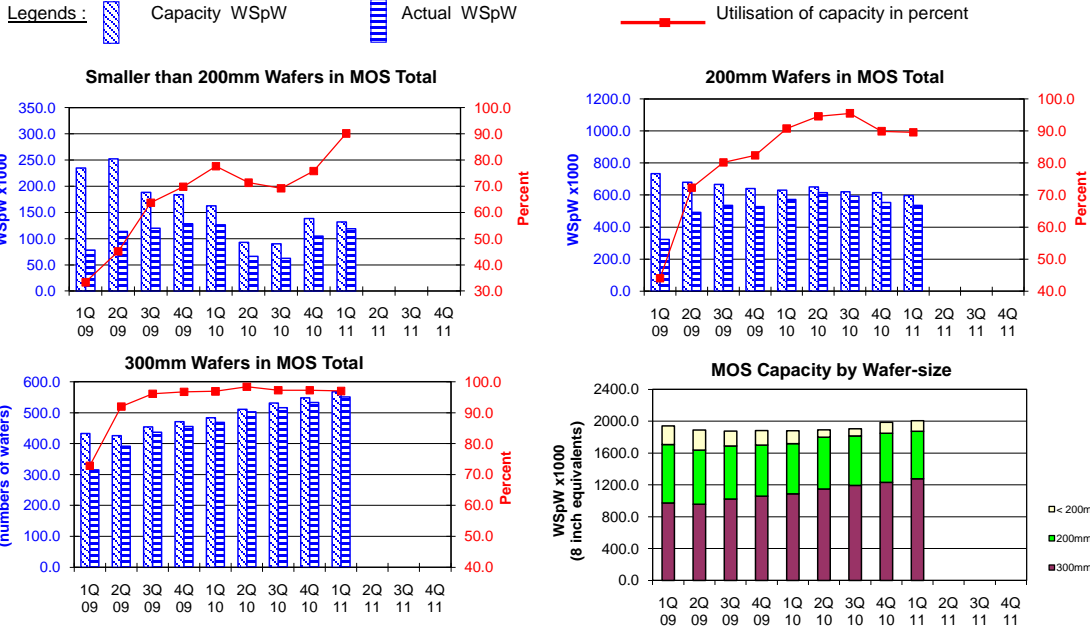
		1Q 09	2Q 09	3Q 09	4Q 09	1Q 10	2Q 10	3Q 10	4Q 10	1Q 11			
MOS Total	Capacity	Wafer-starts per week x 1000	1942.1	1890.0	1877.1	1884.0	1880.5	1892.6	1904.6	1986.8	2006.3		
		% growth re. preceding quarter	-8.0	-2.7	-0.7	0.4	-0.2	0.6	0.6	4.3	1.0		
		% growth re. one year ago	-6.6	-10.9	-12.5	-10.7	-3.2	0.1	1.5	5.5	6.7		
	Actual Wafer-Starts	Wafer-starts per week x1000	1109.9	1486.1	1636.8	1680.8	1752.1	1812.1	1816.2	1857.5	1892.7		
	% growth re. preceding quarter	-23.1	33.9	10.1	2.7	4.2	3.4	0.2	2.3	1.9			
	% growth re. one year ago	-41.2	-21.7	-12.7	16.5	57.9	21.9	11.0	10.5	8.0			
	Utilisation	in percent (%)	57.1	78.6	87.2	89.2	93.2	95.7	95.4	93.5	94.3		
BIPOLAR (5 inch equivs.)	Capacity	Wafer-starts per week x1000	135.3	148.2	127.1	125.8	118.6	116.2	123.8	120.7	116.2		
		% growth re. preceding quarter	-31.1	9.5	-14.2	-1.0	-5.7	-2.0	6.5	-2.5	-3.7		
		% growth re. one year ago	-27.6	-24.8	-36.8	-35.9	-12.3	-21.6	-2.6	-4.0	-2.0		
	Actual Wafer-Starts	Wafer-starts per week x1000	59.8	89.4	102.5	112.6	111.6	105.4	107.8	93.9	100.4		
	% growth re. preceding quarter	-53.4	49.5	14.7	9.9	-0.9	-5.6	2.3	-12.9	7.0			
	% growth re. one year ago	-61.1	-45.0	-34.9	-12.2	86.6	17.9	5.2	-16.7	-10.0			
	Utilisation	in percent (%)	44.2	60.3	80.6	89.5	94.1	90.7	87.1	77.7	86.4		
Foundry Wafers in MOS Total	Capacity	Wafer-starts per week x1000	296.1	288.3	315.2	324.8	384.2	407.0	424.9	436.7	441.9		
		% growth re. preceding quarter	0.8	-2.6	9.3	3.0	18.3	5.9	4.4	2.8	1.2		
		% growth re. one year ago	-0.5	-6.2	8.9	10.6	29.8	41.2	34.8	34.5	15.0		
	Actual Wafer-Starts	Wafer-starts per week x1000	148.3	239.7	289.8	295.6	363.8	402.2	422.0	426.9	428.8		
	% growth re. preceding quarter	-4.3	61.6	20.9	2.0	23.1	10.6	4.9	1.2	0.4			
	% growth re. one year ago	-46.8	-16.0	15.9	90.7	145.3	67.8	45.6	44.4	17.9			
	Utilisation	in percent (%)	50.1	83.1	91.9	91.0	94.7	98.8	99.3	97.8	97.0		

Yellow coloured cells reflect revised inputs Green bordered cells contain changes resulting from revised inputs

These statistics are based on data supplied by merchant SC manufacturers who together represent the majority of the world's SC production.
Note: This report includes estimated data.

All MOS data are expressed in 8 inch equivalent wafers, except for the 300mm wafer data where annotated as "numbers of wafers".

WSpW = Wafer-Starts per Week.



		1Q 09	2Q 09	3Q 09	4Q 09	1Q 10	2Q 10	3Q 10	4Q 10	1Q 11				
200mm wafers in MOS Total	Capacity	Wafer-starts per week x 1000	234.8	252.3	188.1	183.9	162.8	92.9	90.2	138.5	131.8			
		% growth re. preceding quarter	-12.4	7.4	-25.4	-2.3	-11.5	-42.9	-2.9	53.6	-4.8			
		% growth re. one year ago	-16.5	-14.7	-32.7	-31.4	-30.7	-63.2	-52.1	-24.7	-19.0			
	Actual Wafer-Starts	Wafer-starts per week x1000	78.3	113.8	119.9	128.3	126.4	66.3	62.4	104.9	118.8			
		% growth re. preceding quarter	-43.7	45.3	5.3	7.0	-1.5	-47.6	-5.8	68.1	13.2			
		% growth re. one year ago	-66.3	-49.2	-33.3	-7.8	61.4	-41.8	-47.9	-18.2	-6.0			
Utilisation	in percent (%)	33.4	45.1	63.7	69.8	77.7	71.3	69.2	75.8	90.2				

200mm wafers in MOS Total	Capacity	Wafer-starts per week x1000	733.5	679.7	666.8	640.4	630.1	650.4	619.9	615.0	597.2			
		% growth re. preceding quarter	-11.2	-7.3	-1.9	-4.0	-1.6	3.2	-4.7	-0.8	-2.9			
		% growth re. one year ago	-22.8	-22.3	-21.1	-22.5	-14.1	-4.3	-7.0	-4.0	-5.2			
	Actual Wafer-Starts	Wafer-starts per week x1000	322.6	491.4	534.8	527.6	571.8	615.2	592.1	553.0	534.8			
		% growth re. preceding quarter	-29.6	52.3	8.8	-1.3	8.4	7.6	-3.8	-6.6	-3.3			
		% growth re. one year ago	-61.7	-36.5	-24.9	15.2	77.2	25.2	10.7	4.8	-6.5			
Utilisation	in percent (%)	44.0	72.3	80.2	82.4	90.7	94.6	95.5	89.9	89.6				

300mm wafers in MOS Total	Capacity	WSpW x 1000 expressed in 8 inch equivalent wafers	973.8	958.1	1022.2	1059.8	1087.7	1149.3	1194.5	1233.3	1277.3			
		WSpW x 1000 expressed in numbers of wafers	432.8	425.8	454.3	471.0	483.4	510.8	530.9	548.1	567.7			
		% growth re. preceding quarter	-4.2	-1.6	6.7	3.7	2.6	5.7	3.9	3.2	3.6			
		% growth re. one year ago	15.0	0.9	0.2	4.3	11.7	20.0	16.9	16.4	17.4			
	Actual Wafer-Starts	WSpW x 1000 expressed in 8 inch equivalent wafers	709.0	880.9	982.1	1024.9	1053.9	1130.6	1161.7	1199.5	1239.0			
		WSpW x 1000 expressed in numbers of wafers	315.1	391.5	436.5	455.5	468.4	502.5	516.3	533.1	550.7			
		% growth re. preceding quarter	-16.2	24.2	11.5	4.4	2.8	7.3	2.7	3.3	3.3			
		% growth re. one year ago	-12.6	-2.1	-0.2	21.2	48.7	28.4	18.3	17.0	17.6			
	Utilisation	in percent (%)	72.8	91.9	96.1	96.7	96.9	98.4	97.2	97.3	97.0			

Yellow coloured cells reflect revised inputs Green bordered cells contain changes resulting from revised inputs

These statistics are based on data supplied by merchant SC manufacturers who together represent the majority of the world's SC production.
Note: This report includes estimated data.